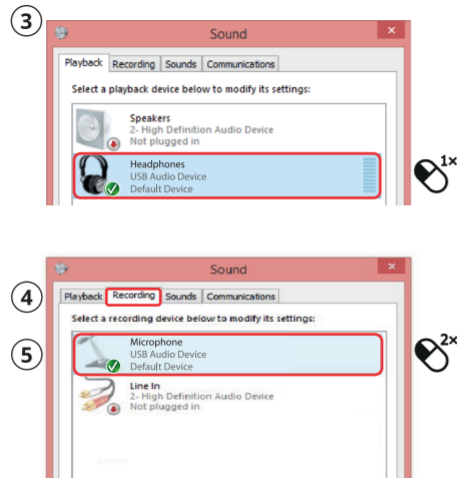
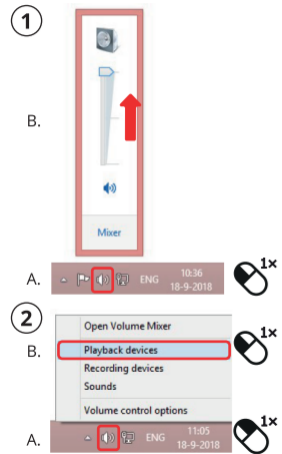
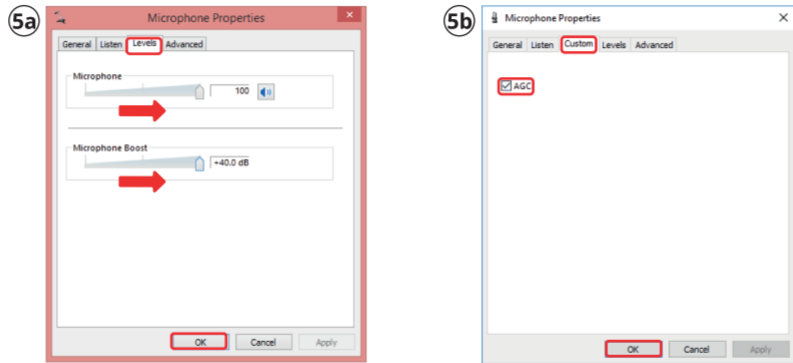


4. Windows 7/8



5. Windows 7/8



FAQ

WWW.TRUST.COM/24188/FAQ

Trust International BV - Laan van Barcelona 600 - 3317DD, Dordrecht, NL
©2020 Trust All rights reserved.

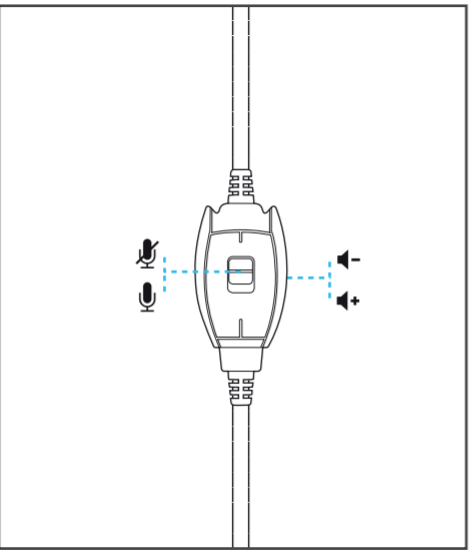
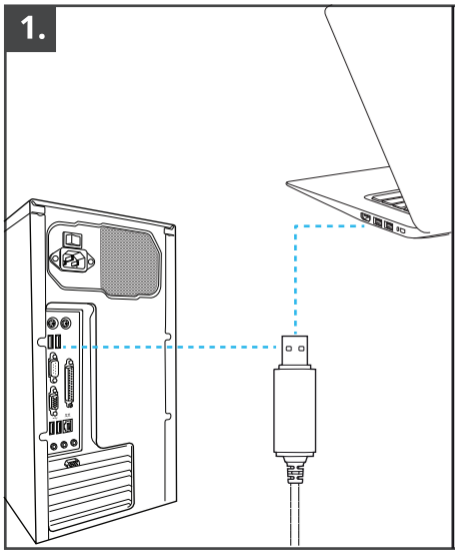
Trust CHAT HEADSET For PC & Laptop

ROHA

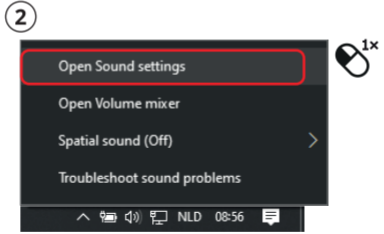
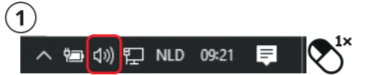


User Guide | Bedienungsanleitung | Mode d'emploi | Gebruikershandleiding | Manuale utente | Manual del usuario | Guia do utilizador | Brukerveiledning | Bruksanvisning | Käyttöopas
Brugsvejledning | Instrukcja obsługi | Návod k použití | Návod na používanie | Használati útmutató | Manual de utilizare | Ръководство за потребителя | Εγχειρίδιο χρήσης | Kullanicı kılavuzu
Руководство пользователя | Uporabniški priročnik | Korisnički priručnik | Guia do usuário | Посібник користувача

1.



2. Windows 10



Sound

3 Speakers (USB PnP Sound Device)
USB Audio Device

Some apps are using custom output settings. You can personalize these in app volume and device preferences below.

Device properties

Volume

4 100

Troubleshoot

Input

5 Microphone (USB PnP Sound Device)
USB Audio Device

Some apps are using custom input settings. You can personalize these in app volume and device preferences below.

6 **Device properties**

Test your microphone

Troubleshoot

3. Windows 10

