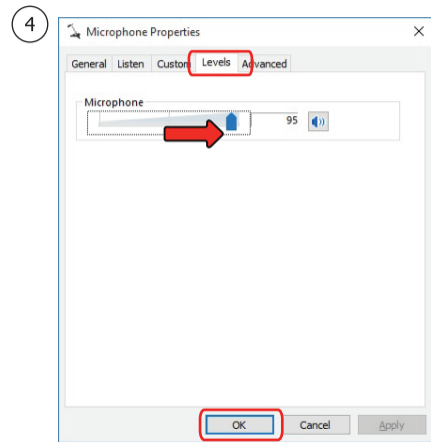
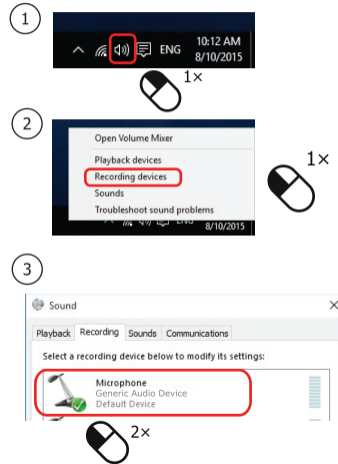
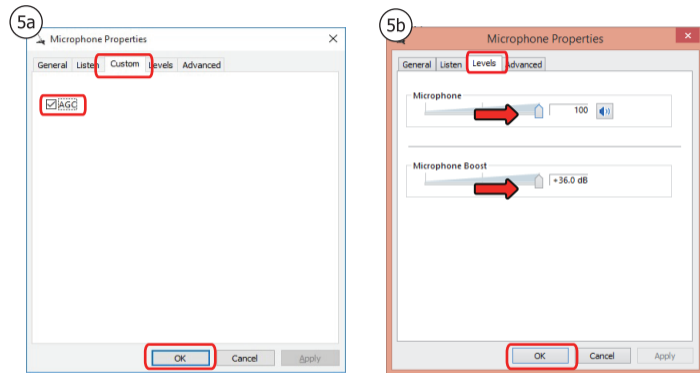


## 4. Installation - Windows 10/8/7



## 5. Installation - Windows 10/8/7



### FAQ

Frequently asked questions

[www.trust.com/21708/faq](http://www.trust.com/21708/faq)

Trust International BV - Laan van Barcelona 600 - 3317DD, Dordrecht, NL

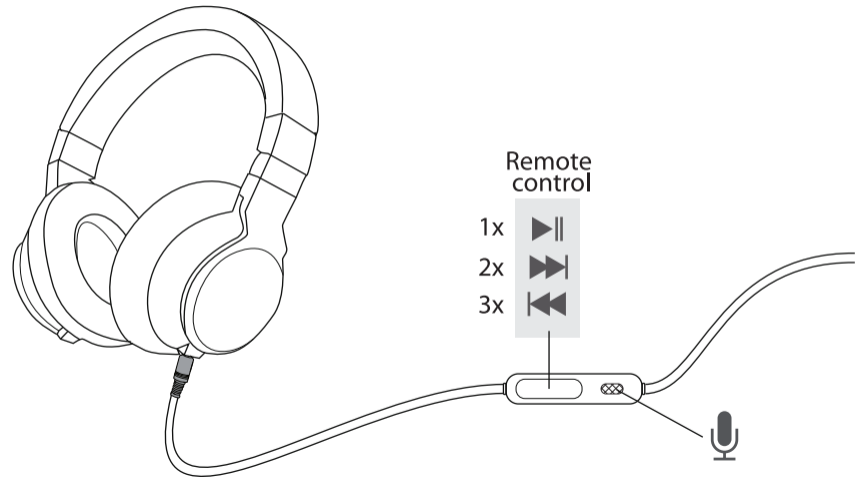
© 02-03-2016 Trust All rights reserved.

**Trust**  
**URBAN**



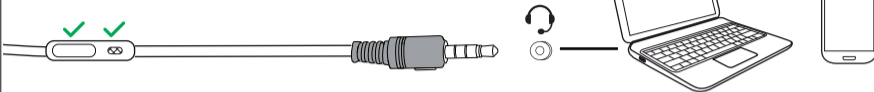
**USER GUIDE**  
**DJ PRO HEADSET**

# 1. Headphone

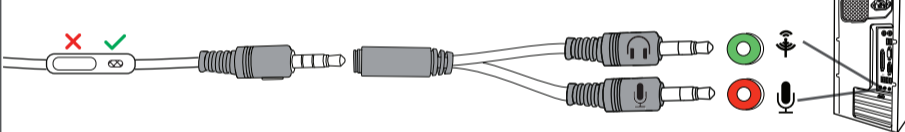


# 2. Connection

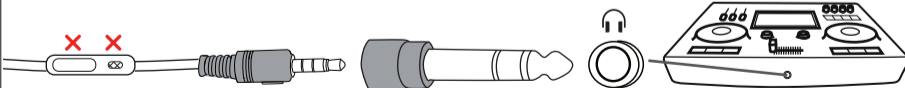
## Option 1: Laptop/Phone



## Option 2: Desktop

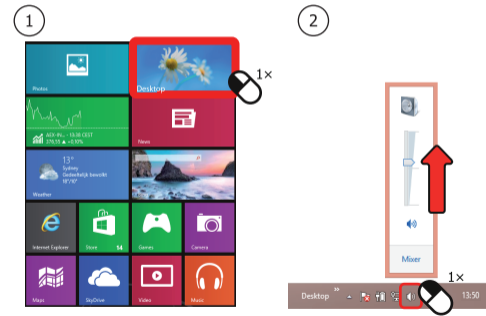


## Option 3: Pro Audio



# 3. Installation - Windows 10/8/7

## Windows 8



## Windows 10/7

