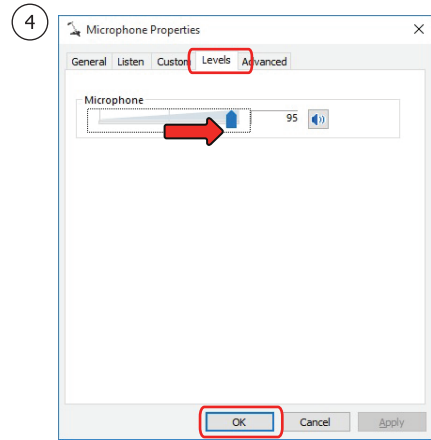
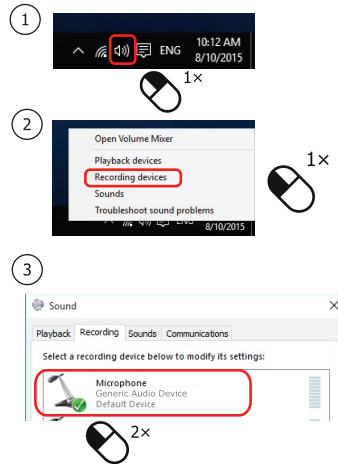
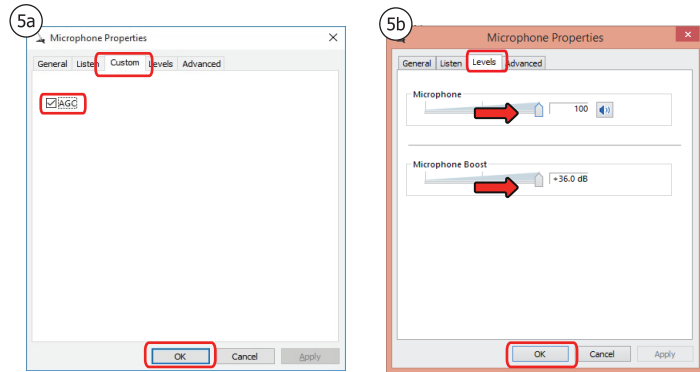


## 4. Installation - Windows 10/8/7



## 5. Installation - Windows 10/8/7



### FAQ

Frequently asked questions

<http://www.trust.com/21659/faq>

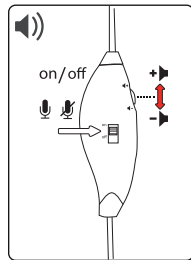
**Trust**

**HEADSET**  
for PC & laptop

**Quick Installation Guide**

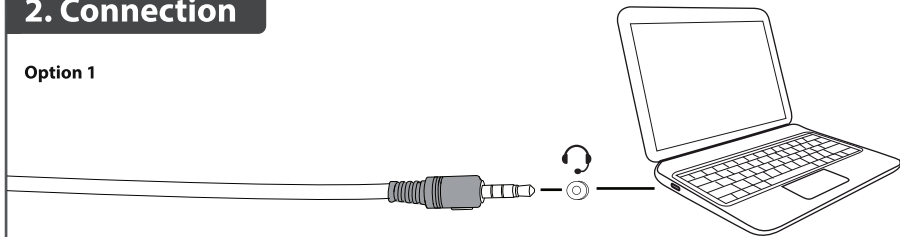


## 1. Setup

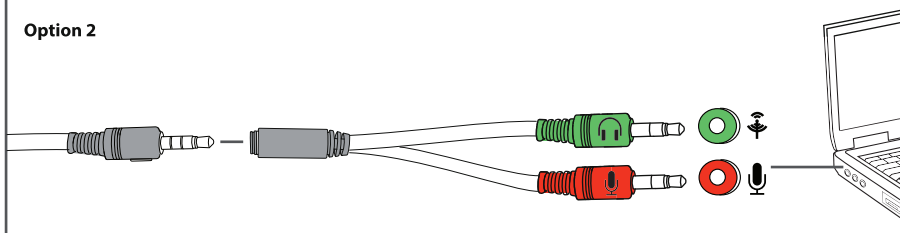


## 2. Connection

### Option 1

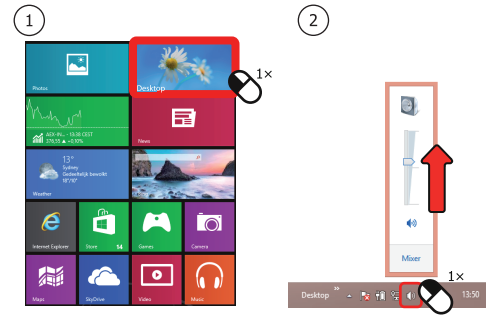


### Option 2



## 3. Installation - Windows 10/8/7

### Windows 8



### Windows 10/7

