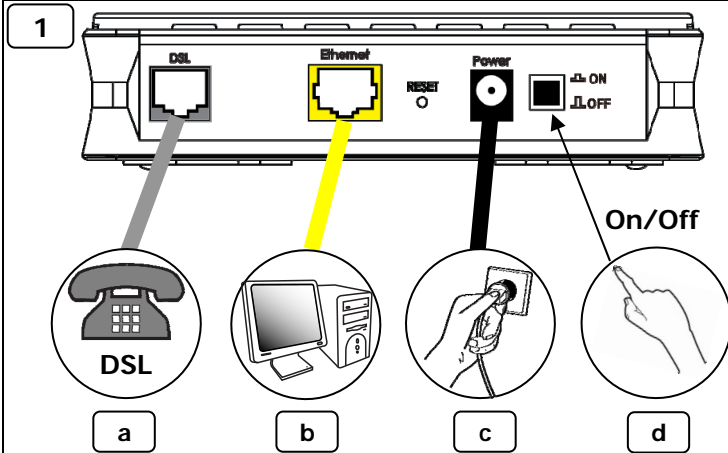




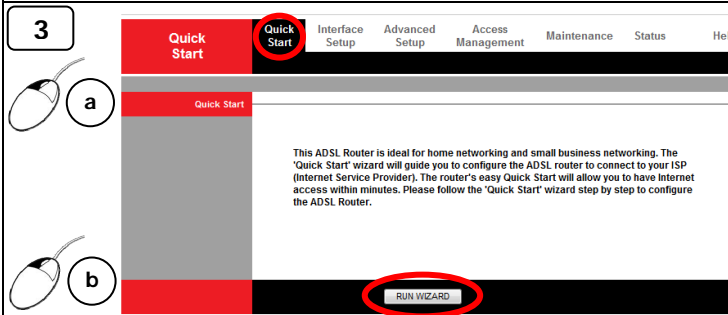
## ADSL 2+ Modem with Router



2

http://192.168.1.1

User Name: **admin** / Password: **admin**



4

### Quick Start

The Wizard will guide you through these four quick steps. Begin by clicking on NEXT.

- Step 1. Set your new password
- Step 2. Choose your time zone
- Step 3. Set your Internet connection
- Step 4. Re-start your ADSL router

NEXT EXIT

5

### Quick Start - Password

You may change the administrator account password by entering in a new password. Click NEXT to continue.

New Password:

Confirmed Password:

BACK NEXT EXIT

EN This is your own password. Type it twice to confirm.

IT Questa è la Sua password. Per confermare, scrivere due volte.

ES Ésta es su propia contraseña. Tipee dos veces para confirmar.

FR Ceci est votre propre mot de passe (deux fois pour confirmer).

DE Dieses ist Ihr eigenes Passwort. Geben Sie es zweimal ein um zu bestätigen.

6

### Quick Start - Time Zone

Select the appropriate time zone for your location and click NEXT to continue.

(GMT+01:00) Amsterdam, Berlin, Stockholm, Paris, Rome, Bern, Brussels, Vienna

BACK NEXT EXIT

7

### Quick Start - ISP Connection Type

Select the internet connection type to connect to your ISP. Click NEXT to continue.

- Dynamic IP Address Choose this option to obtain a IP address automatically from your ISP.
- Static IP Address Choose this option to set static IP information provided to you by your ISP.
- PPPoE/PPPoA Choose this option if your ISP uses PPPoE/PPPoA. (For most DSL users)
- Bridge Mode Choose this option if your ISP uses Bridge Mode.

BACK NEXT EXIT

8

### Quick Start - PPPoE/PPPoA

Enter the PPPoE/PPPoA information provided to you by your ISP. Click NEXT to continue.

Username:

Password:

VCI: 35 (1-65535)

Connection Type: PPPoA VC-Mux

BACK NEXT EXIT

EN The user name and password come from your ISP.

IT Il nome utente e la password vengono forniti dal proprio ISP (gestore ADSL).

ES El nombre de usuario y contraseña corresponden a su conexión de Internet.

FR Détails fournis par votre Fournisseur d'Accès à Internet.

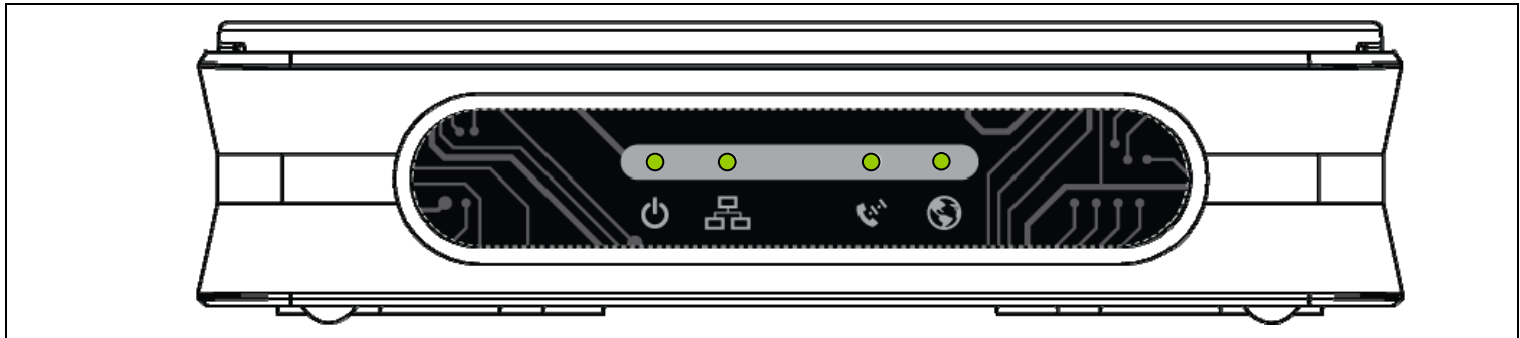
DE Der Benutzername und das Passwort bekommen Sie von Ihrem Internet-Anbieter.

**9 Quick Start Complete !!**

The Setup Wizard has completed. Click on **BACK** to modify changes or mistakes. Click **NEXT** to save the current settings.

**10 Quick Start Completed !!**

Saved Changes.



	<p>● = ✓ ○ = ✗ → 1 c → 1 d</p>		<p>● = ✓ ○ = ✗ → 1 b → Restart computer</p>
	<p>● = ✓ ● = ✗ → 1 a</p>		<p>● = ✓ ● = ✗ → 6 → 7</p>



► **English** The default settings correspond to the most popular Internet Service Providers' settings. If these settings do not allow you to connect to the Internet, check your ISP's documentation and/or contact its helpdesk to obtain the correct settings.

► **Italiano** Trovera' di default le impostazioni per la configurazione dei più popolari gestori ADSL italiani. Se queste impostazioni non Le consentono di connettersi ad Internet, sarà necessario controllare la documentazione del proprio ISP (gestore ADSL) e/o contattare il relativo supporto per ottenere le impostazioni corrette.

► **Español** Los datos de la configuración por defecto corresponden a los Proveedores de Internet más populares. Si estos datos no le permiten acceder a Internet, verifique la documentación de su proveedor y/o contacte a su servicio técnico para obtener los datos de configuración correctos.

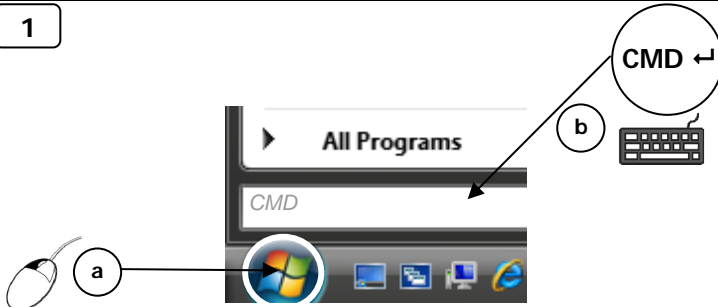
► **Français** Les paramètres par défaut utilisés par le routeur correspondent à la majorité des fournisseurs d'accès. Si ces paramètres ne vous permettent pas de vous connecter à Internet, vérifiez la documentation de votre FAI et/ou contactez le afin d'obtenir les paramètres appropriés.

► **Deutsch** Die Standardeinstellungen stimmen mit der meist verwendeten Einstellungen der Internet-Anbieter überein. Wenn Sie mit dieser Einstellungen keine Verbindung zum Internet herstellen können, überprüfen Sie die Internet-Anbieter Daten oder fragen Sie bei Ihrem Internet-Anbieter nach.

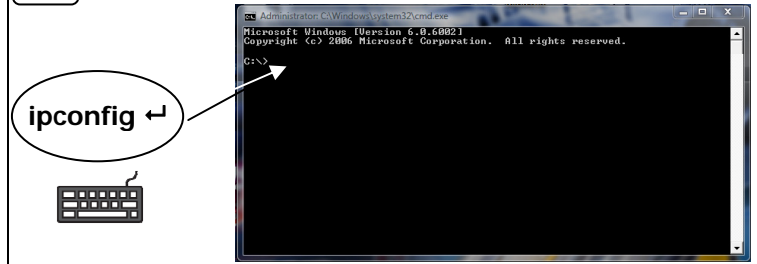


## Port forwarding guide

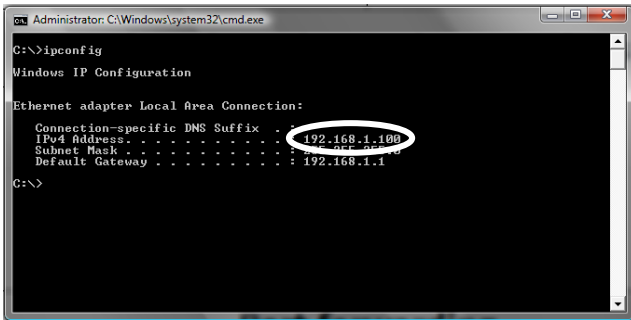
1



2



3



EN

This is your computer's IP address.

IT

Questo è l'indirizzo IP del Suo computer.

ES

Ésta es la dirección IP de su ordenador.

FR

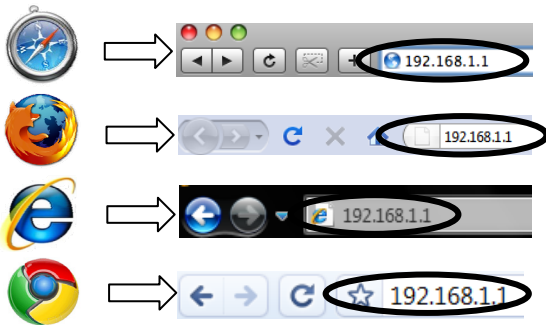
Ceci est l'adresse IP de votre ordinateur.

DE

Dies ist die IP-Adresse Ihres Computers.

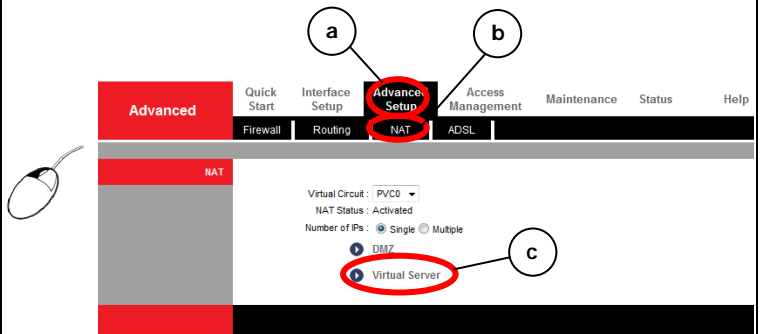
4

http://192.168.1.1

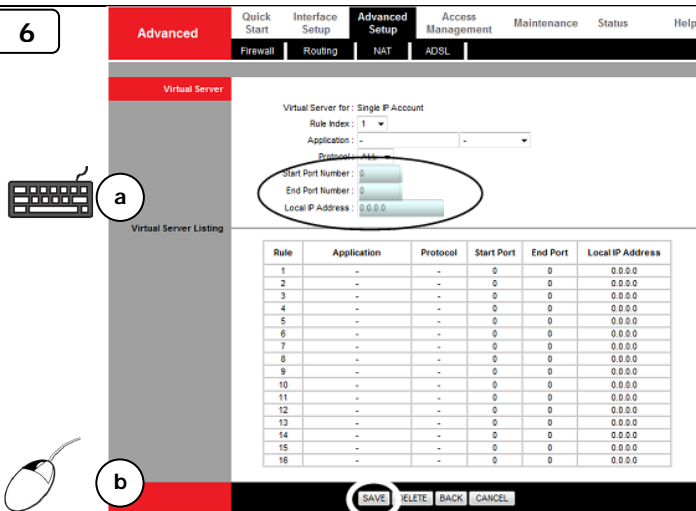


User Name: **admin** / Password: **admin**

5



6



EN

Enter the port numbers you want to forward, and your computer's IP address.

IT

Inserire il numero della porta che si desidera aprire e l'indirizzo IP del proprio computer.

ES

Ingrese los números de puerto que desee habilitar y la dirección IP de su ordenador.

FR

Entrez les numéros des ports que vous souhaitez ouvrir, et l'adresse IP de votre ordinateur.

DE

Geben Sie die Port-Nummer ein die Sie weiterleiten möchten, und die IP Adresse des Computers.