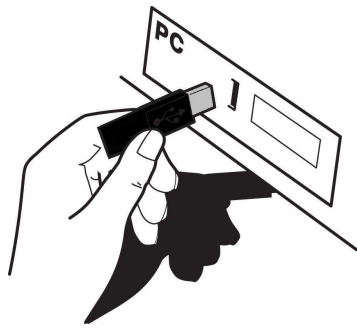
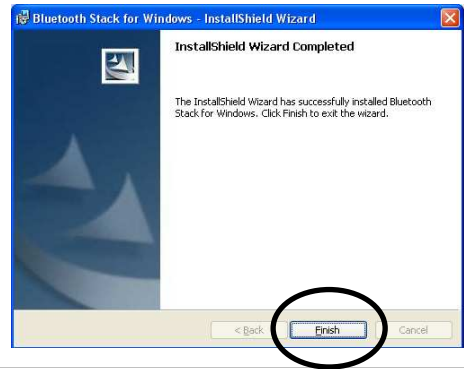


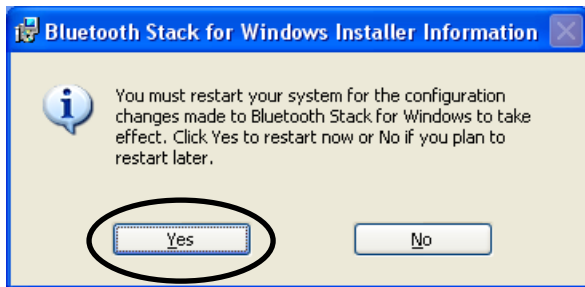
8



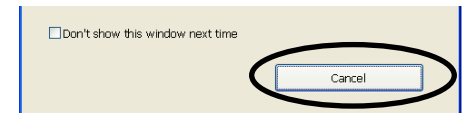
9



10



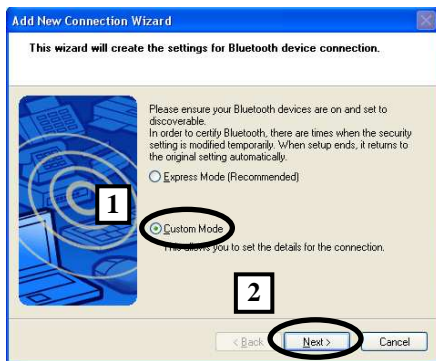
11



2x



12

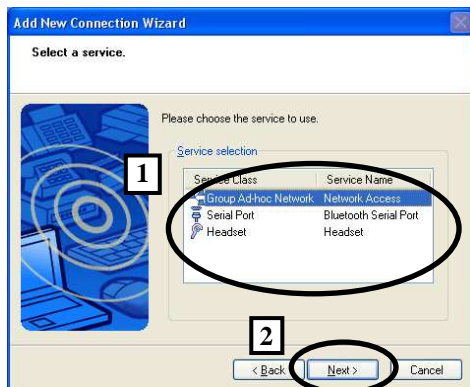


13



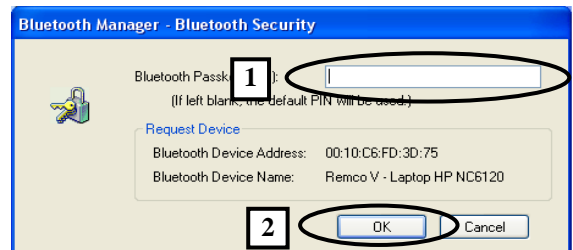
Select Bluetooth device

14

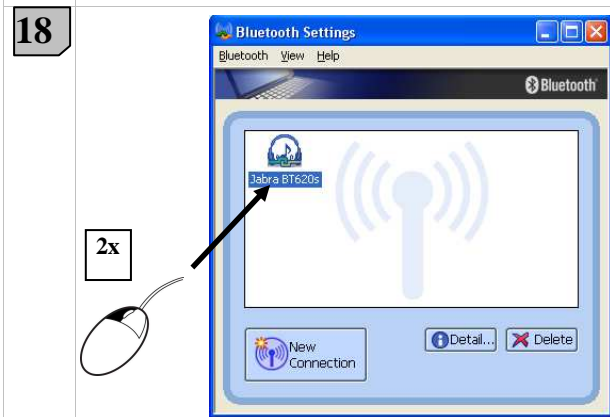
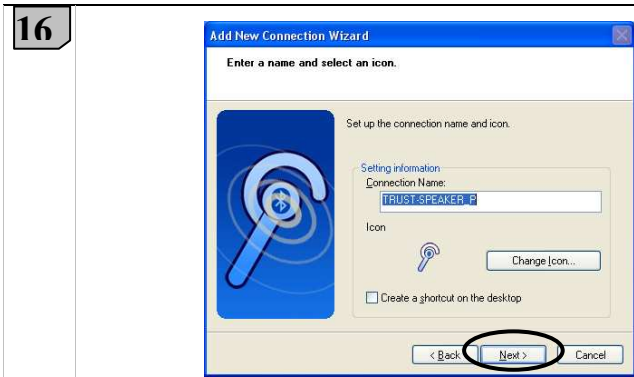


Select Bluetooth device

15



Type pin code (if required)



**Connect Bluetooth device**



  
 DECLARATION OF CONFORMITY

We, the manufacturer / importer,

Trust International  
 Laan van Barcelona 600  
 3317 DD Dordrecht  
 The Netherlands

Declare that the product

Kind of product	: Bluetooth USB dongle
Type designation	: BT-2400p Ultra Small Bluetooth 2 USB Adapter
Item No.	: 16042

Is in compliance with the essential requirements and other relevant provisions of the following directives:

EMC Directive	(89/336/EC)
Low-Voltage Directive	(73/23/EC)
R&TTE Directive	(1999/5/EC)

The product is compatible with the following norms / standards:

EN 55022	2005
EN 60950	2006
EN 301 489-1 V1.4.1	2002
EN 301 489-17 V1.2.1	2002

Intended use : indoor  
 Restrictions for usage : none

Manufacturer/Authorised representative



B. Schrijvers, M.Sc.

Dordrecht, 02-05-2008

**Wireless information**

- This class 1 wireless device meets the essential requirements and other relevant conditions of R&TTE Directive 1999/5/EC.
- Be careful when using wireless devices if you have a pacemaker or are dependent on other life-saving, sensitive electronic equipment, because this device transmits radio signals.