

# Windows XP

**8**

**Initial Bluetooth Configuration Wizard**

**Initial Bluetooth Configuration Wizard**

Before you can begin using Bluetooth on this computer you must perform some initial setup. This wizard will help you to configure a basic Bluetooth environment.

You can access the Bluetooth features on this computer through the Bluetooth icon on the desktop or in the system tray. This icon can also appear in the following locations. Select the locations you want the icon to appear and click Next.

- Add the icon to the Start menu
- Add the icon to the Programs menu
- Add the icon to My Computer

< Back **Next >** Cancel

**9**

**Bluetooth Service Selection**

**Use the services that this computer will offer:**  
To enable a service, place a check in the box next to the service name. To display the properties panel for a service, click Configure.

- PIM Item Transfer  
Allow remote Bluetooth devices to exchange business cards with this computer. Accept Personal Information Manager (PIM) items such as calendar items, contacts, notes and messages from remote Bluetooth devices. Configure
- PIM Synchronization
- File Transfer
- Network Access
- Dial-up Networking
- Bluetooth Serial Port

< Back **Next >** Cancel

**10**

**Initial Bluetooth Configuration Wizard**

**Initial Bluetooth Configuration Wizard**

This wizard can help you setup connections to Bluetooth computers, phones, headsets, etc.

To setup a connection now, put the other device in pairing mode, and then click Next. (See the other device's documentation for assistance in preparing it to accept a connection.)

To setup connections later, click Skip.

< Back Next > **Skip** Cancel

**11**

**Initial Bluetooth Configuration Wizard**

**Initial Bluetooth Configuration Wizard**

**Congratulations!**

Basic Bluetooth configuration is complete. You may begin using this computer's Bluetooth features.

To re-configure Bluetooth with the assistance of a wizard, select the "Bluetooth Setup Wizard" from any of the Bluetooth icons or menu items.

To access the Bluetooth configuration panel, select "Advanced Configuration" from any of the Bluetooth icons or menu items.

< Back **Finish** Cancel

**12**

**ON**

**13**

**2 sec**

EN [System Tray Icons] **Bluetooth Icon** 10:41

**2x**

**14**

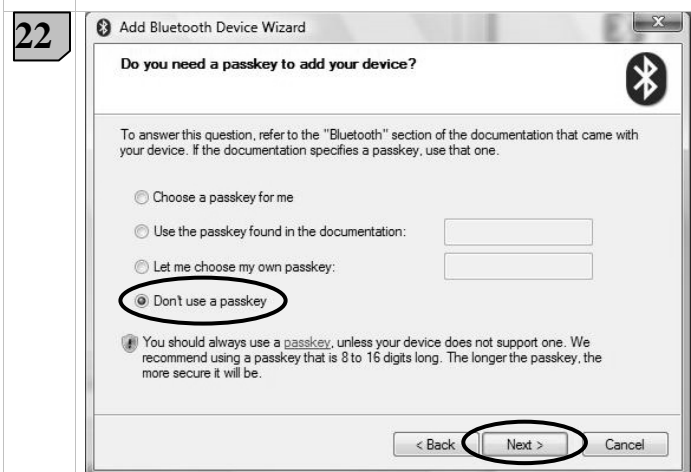
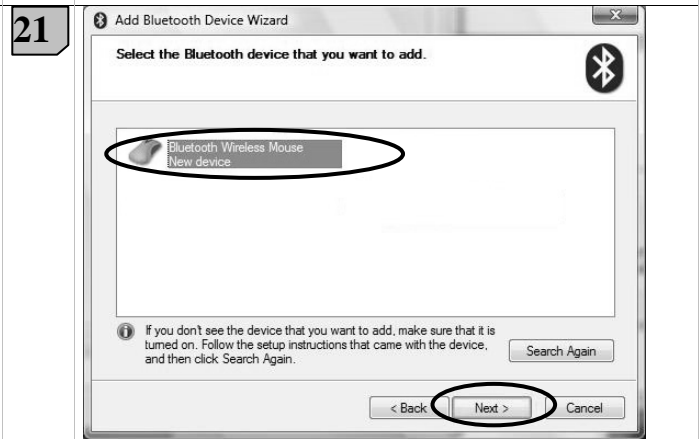
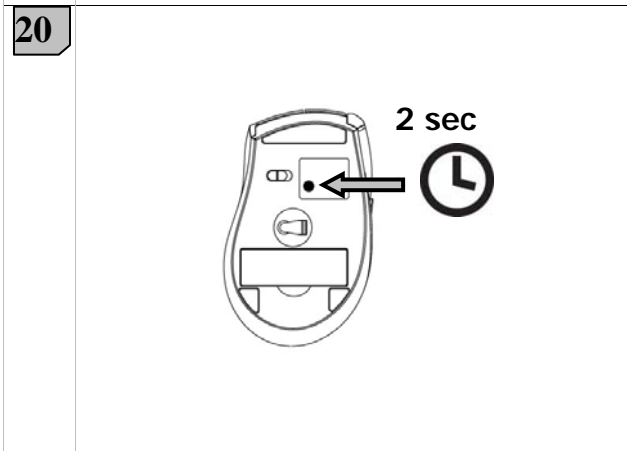
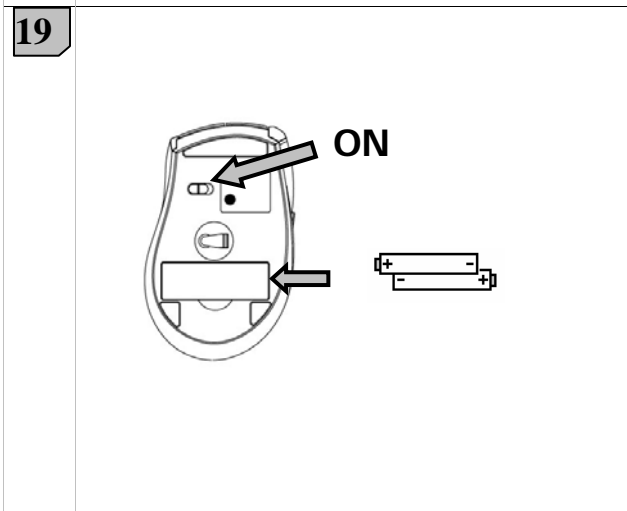
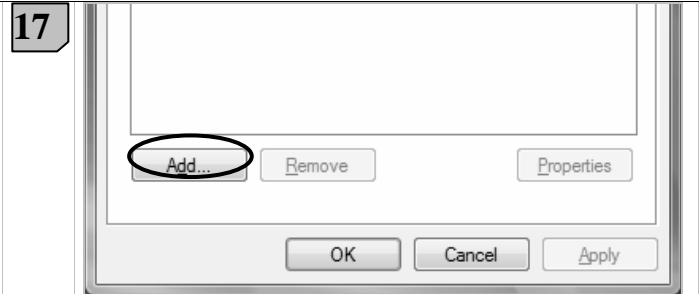
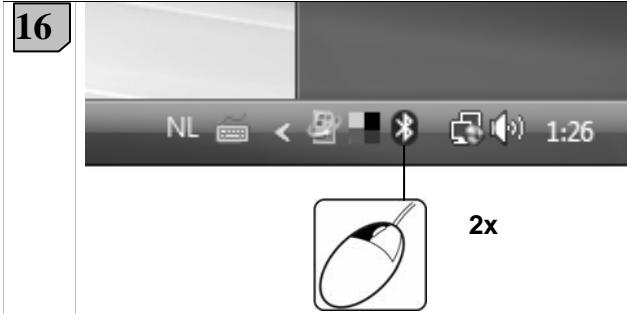
**Bluetooth Wireless Mouse**

**2x**

**15**

**Bluetooth Wireless Mouse**

# Windows Vista



**DECLARATION OF CONFORMITY**

We, the manufacturer / importer,

Trust International  
Laan van Barcelona 600  
3317 DD Dordrecht  
The Netherlands

Declare that the product

Kind of product	Wireless Laser Mouse
Type designation	Trust BT-8800Rp Bluetooth Laser Mini Mouse
Item No.	15606-02

Is in compliance with the essential requirements and other relevant provisions of the following directives:

EMC Directive	(89/336/EC)
Low-Voltage Directive	(73/23/EC)
R&TTE Directive	(1999/5/EC)

The products is compatible with the following norms / standards:

EN 301489-1	v1.4.1
EN 301489-17	v1.2.1
EN 60950-1	2001
EN 60825-1 laser	
EN 300328	v1.6.1

Intended use:	indoor
Restrictions for usage:	none

Manufacturer/Authorised representative

B. Schrijvers, M.Sc.

Dordrecht, 04-12-2007

---

**Wireless information**

- This class 1 wireless device meets the essential requirements and other relevant conditions of R&TTE Directive 1999/5/EC.
- Be careful when using wireless devices if you have a pacemaker or are dependent on other life-saving, sensitive electronic equipment, because this device transmits radio signals.