

<p>1</p>	<p>2</p>	<p>3</p>
<p>4</p>	<p>5</p>	<p>6</p>
<p>7</p>	<p>8</p>	<p>9</p>
<p>10</p>	<p>11</p>	<p>12</p>
<p>13 Select Bluetooth device</p>	<p>14 Select Bluetooth service</p>	<p>15 Type pin code (if required)</p>

16 Add New Connection Wizard

Enter a name and select an icon.

Set up the connection name and icon.

Setting information:
Connection Name:

Icon:

Create a shortcut on the desktop

< Back **Next >** Cancel

17 Add New Connection Wizard

Completing the Add New Connection Wizard

Registration of connection information complete.

< Back **Finish** Cancel

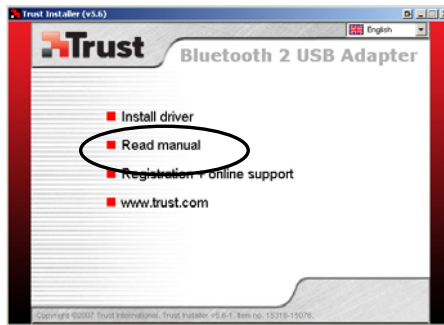
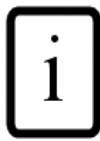
18 Connect Bluetooth device

Bluetooth Settings

Bluetooth View Help

Trust BT2305P

FINISH



DECLARATION OF CONFORMITY

We, the manufacturer / importer,

Trust International
Laan van Barcelona 600
3317 DD Dordrecht
The Netherlands

Declare that the product

Kind of product
Type designation
Item No.

If Card
BT-2305p Bluetooth 2 USB Adapter
15318

Is in compliance with the essential requirements and other relevant provisions of the following directives:

Electromagnetic Compatibility Directive	(89/336/EC)
Low-Voltage Directive	(73/23/EC)
R&TTE Directive	(1999/5/EC)

The product is compatible with the following norms / standards:

EN 55022 (1998+A1:2000+A2:2003)	(2001)
EN 60950-1	(V1.6.1: 2004)
EN 300328-2	(V1.4.1: 2002)
EN 301489-01	(V1.2.1: 2002)
EN 301489-17	

Intended use: indoor
Restrictions for usage: none

Manufacturer/Authorised representative

B. Schrijvers, M.Sc.

Dordrecht, 10-12-2007

Wireless information

- This class 1 wireless device meets the essential requirements and other relevant conditions of R&TTE Directive 1999/5/EC.
- Be careful when using wireless devices if you have a pacemaker or are dependent on other life-saving, sensitive electronic equipment, because this device transmits radio signals.