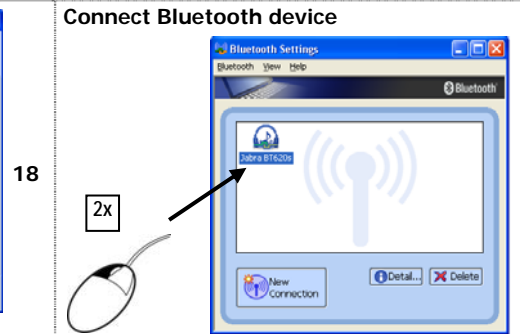


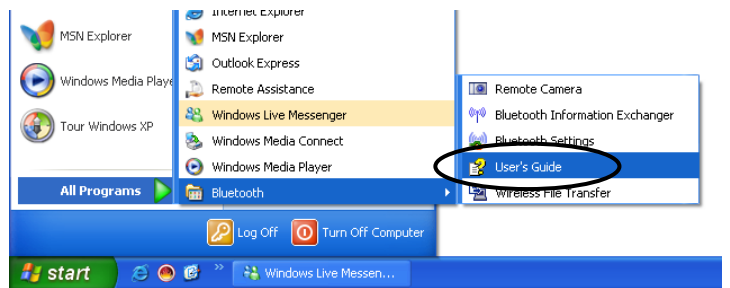
<p>1</p>	<p>2</p>	<p>3</p>
<p>4</p>	<p>5</p>	<p>6</p>
<p>7</p>	<p>8</p>	<p>9</p>
<p>10</p>	<p>11</p>	<p>12</p>
<p>13</p> <p>Select Bluetooth device</p>	<p>14</p> <p>Select Bluetooth service</p>	<p>15</p> <p>Type pin code (if required)</p>



FINISH



&



DECLARATION OF CONFORMITY

We, the manufacturer / importer,
Trust International
Laan van Barcelona 600
3317 DD Dordrecht
The Netherlands

Declares that the product
Kind of product : WIRELESS BLUETOOTH ADAPTER
Type designation : BT-2100p Bluetooth 2.0 EDR USB Adapter
Item No. : 15076

Is in compliance with the essential requirements and other relevant provisions of the following directives:
Electromagnetic Compatibility Directive (89/336/EC)
Low-Voltage Directive (73/23/EC)
R&TTE Directive (1999/5/EC)

The products is compatible with the following norms / standards:
EN 60950 (2000)
EN301 489-1 v1.4.1 (2002)
EN 301489-17 V1.2.1 (2002-08)

Manufacturer/Authorised representative

B. Schrijvers, M.Sc.
Dordrecht, 30-10-06

Wireless information

This class 1 wireless device meets the essential requirements and other relevant conditions of R&TTE Directive 1999/5/EC. Be careful when using wireless devices if you have a pacemaker or are dependent on other life-saving, sensitive electronic equipment, because this device transmits radio signals.