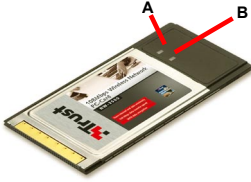




Product information




 **WiFi** 

A: Power indicator LED	LED: B blinks, A off:	Driver not installed
B: Link / Activity LED	A, B alternatively blinking:	No connection
	A, B blinking together:	Connection


Driver Installation

- 1




Start notebook.

⚠ Installation in Windows XP and 2000 could differ.
- 2

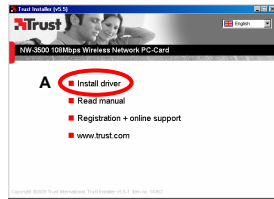


Place CD.
- 3



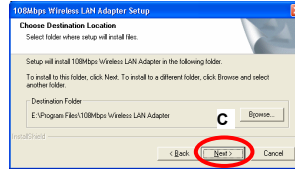
Wait...

4

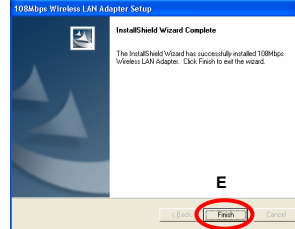
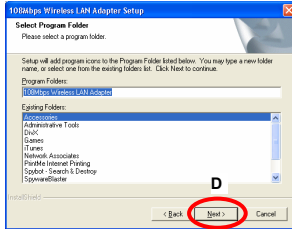


- a) Click 'Install driver'.
- b) Click 'Next'.
- c) Click 'Next'.
- d) Click 'Next'.
- e) Click 'Finish'.

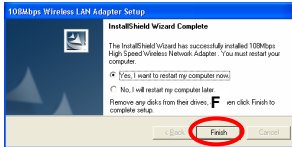
5



6



7



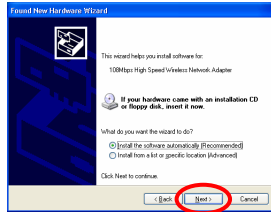
- f) Click 'Finish' to reboot.
- g) Wait until Windows is restarted.

8



Insert card.
Wait...

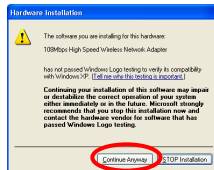
9



Click 'Next'

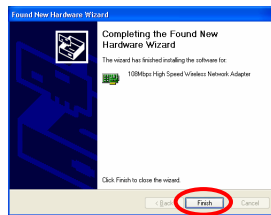
Note: Windows XP Service Pack 2: 'New Hardware wizard' starts, first choose 'No, not this time' and click 'Next' to continue.

10



When 'Windows driver signing' warning, click: 'Continue Anyway'.

11



Click 'Finish'


Drivers are installed

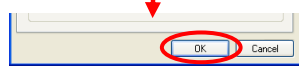
Connecting to existing wireless network (wireless Internet)



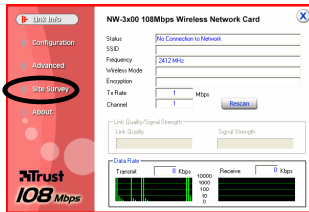
1  Double click icon in the right lower corner of the screen.



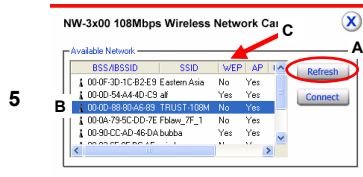
2  Uncheck 'Use Windows to configure...'. Click 'OK'.



3  Double click.

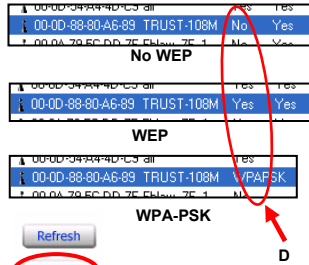


4 Click 'Site Survey'.



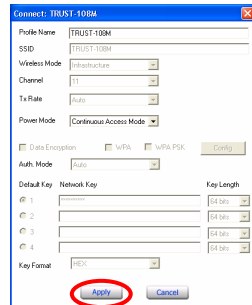
5

- a) Click 'refresh'.
- b) Find the network you want to connect. If you cannot find your network, click 'refresh' again or move closer.
- c) Check the 'WEP' column.



6

- d) Determine the network type
- e) Click 'Connect':
- f) Continue:
 WEP = No → 7
 WEP = Yes → 8
 WEP = WPA-PSK → 9



7

No encryption
 Click 'Apply'. → 10
 This network is insecure.

8

WEP enabled

Use the same settings as used in the access point router.

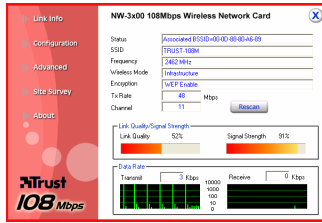
- a) Choose key length. Mostly 128 bits.
- b) Use HEX format.
- c) Input the key. Make sure it's entered correctly; otherwise the connection will not work.
- d) Click 'Apply'. → 10

9

WPA-PSK

- a) Click 'WPA PSK' check box.
- b) Click 'Config' button'.
- c) In the small window, fill in the password.
- d) Click 'Apply'.
- e) Click 'Apply'.

10



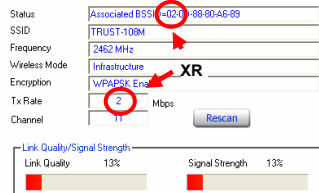
After a few seconds, the network should be connected. If not, check all settings or move closer.

Note: When the network connects, but the network doesn't work, check the network adapter settings in Windows. See Windows help.

Note: When connected to an Ad-hoc network, the 'link Quality' and 'Signal Strength' indicators are not available.

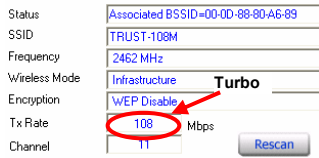
Note: Turbo and XR are not available for Ad-Hoc networks. Use 54Mbps instead.

Note: Turbo and XR need a compatible access point. The client follows these settings.



XR:

- Speed 0.5 Mbps - 3 Mbps.
- Range 2 - 3 times longer.
- Automatically enabled by weak signal.
- BSSID starts with '02'.
- Access point can support both XR and non-XR clients at the same time.





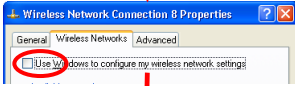
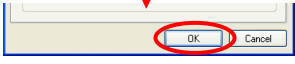

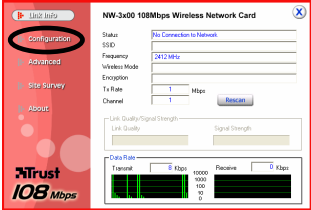
Turbo:

- Uses 2 channels in parallel.
- For short range.
- Tx rate between 72Mbps -108Mbps.
- Only channel 6.

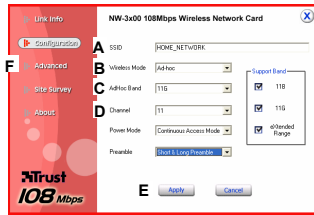
Your network is ready for use!

PC → PC network: Setting up the first computer (Ad-Hoc)



- 1  Double click icon in the right lower corner of the screen.
- 2 

 Switch 'Windows Zero configuration' off. Click 'OK'.
- 3  Double click.
- 4  Click 'Configuration'.

5

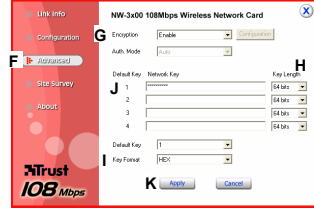


Fill in:

- a) 'SSID': give your network a name.
- b) 'Wireless Mode': 'Ad-hoc'.
- c) 'Ad-Hoc band': '11G'
- d) 'Channel': select a channel, like 11. In France, use only 10-13.
- e) Click 'Apply'.

Your Ad-hoc network will start now.

6

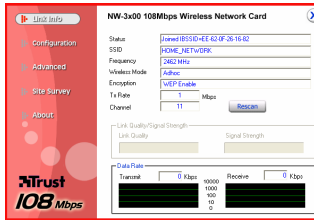


Set security:

These steps are optional, but recommended.

- f) Click 'Advanced'.
- g) 'Encryption': 'Enable'.
- h) 'Key Length': 64 bits.
- i) 'Key format': 'Hex'.
- j) 'Network Key': Make up 10 characters in range 0-9, A-F. Write down. It is needed to connect other computers.
- k) Click 'Apply'. WEP becomes active.

7






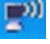



Click 'Link Info'.

The screen should look like this. Other computers can connect to this computer by following chapter H2.

Note: Set a fixed IP address for Ad-hoc networks. See the Internet Sharing Guide on the included CD or Windows help for more info.

Finished!

Icon	Meaning
	Driver not installed or disabled.
 	No connection.
 	Connected, but signal weak.
 	Connected, good signal.

Reminders



Windows does not detect a new device after connecting the card.

- ⚠ Check whether the driver has been installed correctly and whether the card has been inserted properly.
- ⚠ Check whether there is a conflict with other devices in the PC.
- ⚠ The wireless utility is not displayed in the taskbar or the utility does not work. Click on the icon on the desktop. When the icon is not present, re-install the driver.



A wireless connection is not possible (the adapter does not detect a network)

- ⚠ Check the network settings (network name (SSID), radio channel, etc.).
- ⚠ Check the security settings or, first, try to make a connection without encryption (WEP/WPA).
- ⚠ Position the wireless devices 1 to 3 meters apart and reconnect them.
- ⚠ Check the TCP/IP properties of the wireless network.
- ⚠ Check whether the correct wireless network type has been selected (Infrastructure or Ad-hoc).
- ⚠ The network to be detected does not transmit a network name (SSID). Enter the correct network name (SSID) in the network settings.

There is a wireless connection, but no data can be transferred

- ⚠ Make sure the settings on both sides of the connection are the same.
- ⚠ Check the encryption settings. Enter the encryption key again.
- ⚠ Reconnect.

An Ad-hoc connection cannot be made

- ⚠ Enter the same wireless network settings for each station. Check the network name (SSID), channel, etc.

⚠ Enter the same encryption settings (none or WEP) for each station

UK

No network connecting in Windows (network computers are not visible)

- ⚠ Make sure the TCP/IP protocol and 'Client for Microsoft Networks' are active.
- ⚠ Make sure the workgroup names are the same. If the workgroup name is unknown, use MSHOME.
- ⚠ Give the systems access rights to the network. Enable Windows network sharing and encryption.

))) Less wireless performance

- ⚠ Reduce the distance between router and computer. Walls, floors and any other form of reinforced concrete structures will reduce range.
- ⚠ Other wireless networks on the same or nearby channels can cause interference. Select other channel. When using Turbo mode, you can only use channel 6. Switch off Turbo mode when channel 6 is not available.
- ⚠ When you mix 802.11b en 802.11g products, performance is reduced.

Another network uses the same radio channel:

- ⚠ Infrastructure: alter the channel number.
- ⚠ Ad-Hoc: turn off all but one station. Alter the channel on this station. Turn the other station back on.

Information Technology Security

- ⚠ Wireless networks might be less secure then wired networks.
- ⚠ Connecting to wireless public hotspots exposes your computer. Enable Internet Connection Firewall. See Windows help.
- ⚠ Use encryption (like WEP, WPA), otherwise everyone can use your network.
- ⚠ Use WPA-PSK when possible.
- ⚠ Use long and hard-to-guess passwords.

Go to www.trust.com/14362 for up-to-date FAQs, drivers and instruction manuals.

Safety

- Do not open or repair this device.
- Do not use a liquid cleaner or a spray, use a dry cloth.
- Do not use this device in a damp environment, such as a bathroom, damp basement or swimming pool.
- Keep 10 cm minimum distance around apparatus for sufficient ventilation and the ventilation should not be impeded by covering ventilation openings with items, such as newspapers, table-cloths, curtains, etc.

CE 0560 

- This device meets the essential requirements and other relevant conditions of the applicable European directives. The Declaration of Conformity (DoC) is available at www.trust.com/14362/ce

Wireless

- This wireless device works at a frequency of 2400~2483.5MHz (ISM band). It meets the essential requirements and other relevant conditions of R&TTE Directive 1999/5/EC and can be used in the following countries: DK, BE, IS, ES, GR, FR, FI, UK, NO, NL, AT, IE, CH, SE, IT, PT, DE, LU. In France, only channel 10-13 can be used. Go to www.trust.com/14362 for an updated list of the countries where the use of this device is permitted.
- There may be restrictions for the use of this device outside of the EU. If this device is used outside of the EU, check whether this device meets local regulations. Frequency: 2400~2483.5MHz ISM band, Bandwidth: 20MHz, Power: 80 mW maximal, Modulation: OFDM / DSSS.
- Nowadays, there are an increasing number of wireless products (video, audio, computer, etc.) which work in the same frequency range as this device. It may, therefore, be possible that the functionality of this product is limited by or is limiting for other wireless products. This can only be avoided by paying attention to the distance between products and, where possible, by changing channels.
- Be careful when using wireless devices if you have a pacemaker or are dependent on other life-saving, sensitive electronic equipment, because this product transmits radio signals.

Warranty & copyright

- This product has a two-year manufacturer's warranty which is effective from the date of purchase. For more information see www.trust.com/warranty
- Reproduction of this manual or any part of it is prohibited without written permission from Trust International B.V.