


Product information

UK

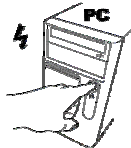


- A: Scroll-wheel and third mouse button (push down for autoscroll or program with included software)
- B: Right mouse button
- C: Cable pulley
- D: Left mouse button
- E: USB to PS/2 converter

Installation

 When using the USB to PS/2 converter: (1) turn off PC; (2) connect mouse; (3) turn on PC; (4) finished.

1



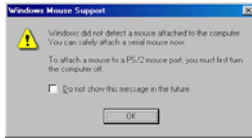
Computer on

2



Connect USB
Windows ME/2000/XP/X-64: **go to 7**
Windows 98(SE): **go to 3**

3



Press [Enter] key

4



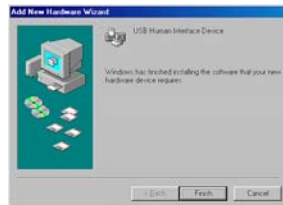
Next

5



Place Windows 98(SE) CD in CD-ROM

6



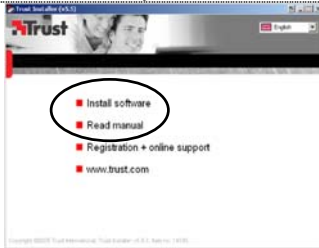
Finish

7



Place Trust Installation CD in CD-ROM player


8






Install Trust Easy Mouse Configuration software and read the software manual.

Reminders

Installation

-  Windows XP SP2, X64 and higher: For correct software installation, make sure DEP (Data Execution Prevention) is set to: "Turn on DEP for Essential Windows programs and services only". (This is the default Windows setting.)

Usage tips

-  Adjust the speed of mouse pointer: (1) Open Windows Help (Start → Help). (2) Search "adjust the speed of mouse pointer". (3) Follow instructions
-  Do not use mouse on highly reflective or transparent surfaces like glass
-  Use soft brush to clean the sensor when it's dusty.

If you have any problems, go to www.trust.com/14184 for FAQ, drivers and manuals.

Safety

- Do not open or repair this device.
- Keep this device away from liquids, such as water.



- This device meets the essential requirements and other relevant conditions of the applicable European directives. The Declaration of Conformity (DoC) is available at www.trust.com/14184/ce

Warranty & copyright

- This product has a two-year manufacturer's warranty which is effective from the date of purchase. For more information see www.trust.com/warranty
- Reproduction of this manual or any part of it is prohibited without permission from Trust International B.V.