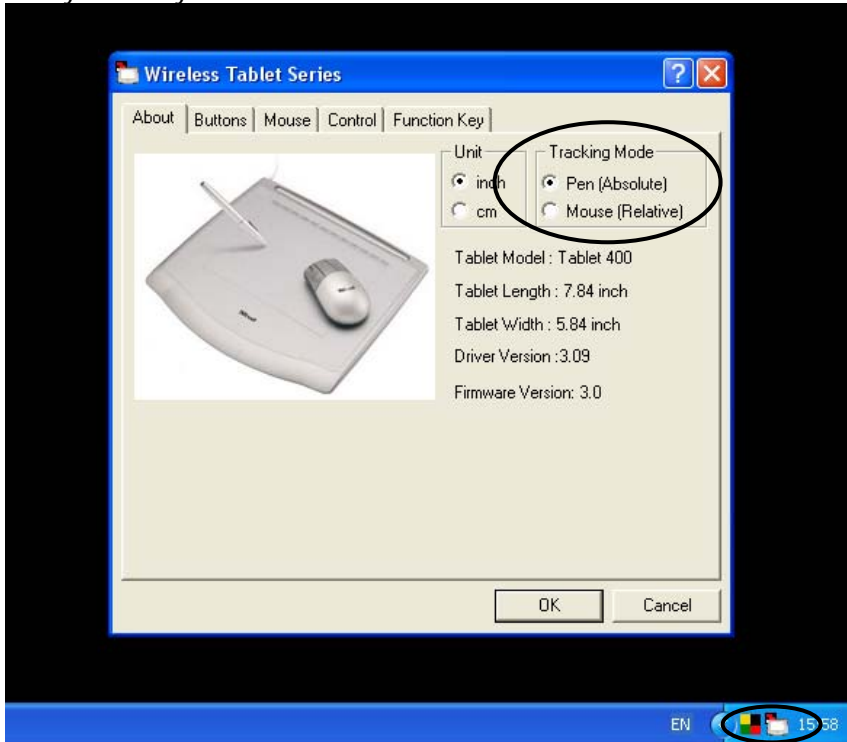


## How to use

The tablet can be used in the same way as your ordinary mouse, only you hold it as a pen and you can define how you want to control the Windows arrow on your screen.

You can choose **relative** or **absolute** control in the tablet configuration software. Double click the tablet icon in the system tray.



**Absolute** (best setting to use with the pen).

The tablet surface pretends as if it is the monitor screen, where you put the pen on the tablet the Windows arrow will be on your monitor.

**Relative** (exactly how your ordinary mouse works)

The tablet surface is independent from the monitor screen, no matter where you put the pen the Windows arrow start off from the point on your monitor screen.

### Left "mouse" button

Press the pen down = left "mouse" button.

Upper button at the side of the pen = left double mouse click.

### Right "mouse" button

This is the lower button on the pen.

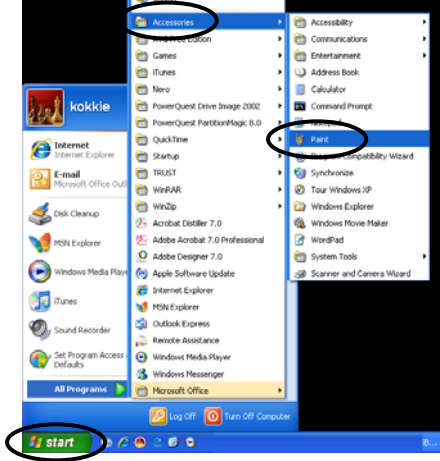
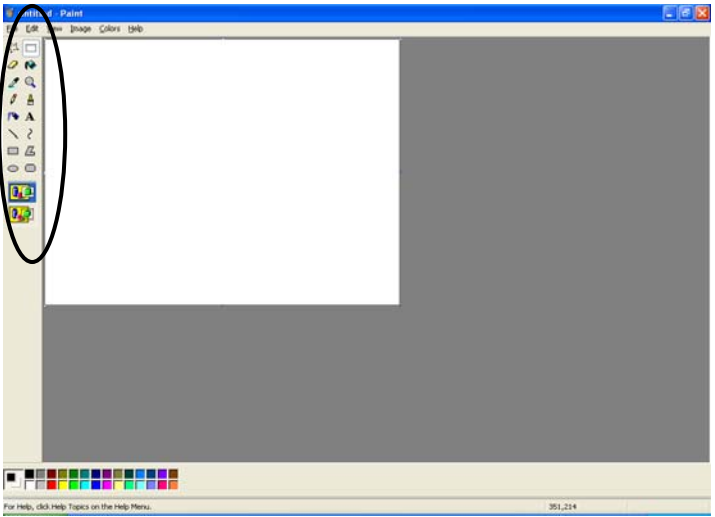
## How to draw images or edit pictures

Drawing images or editing pictures you do in the same way you would normally do.

You pick up the pen (instead of your mouse)

Open photo editing software, for example Microsoft Paint

Open your picture or new template and choose the pen or brush tool you would normally choose.

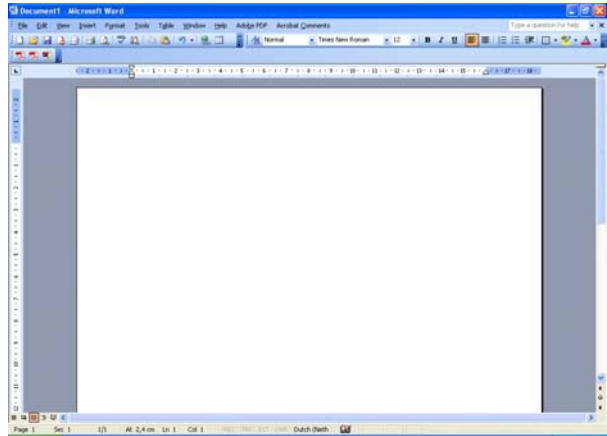
<p>Open Microsoft Paint</p>	 A screenshot of the Windows Start menu. The 'All Programs' list is open, and 'Paint' is highlighted and circled in red. Other programs listed include Internet Explorer, Microsoft Office Outlook, Disk Cleanup, MSN Explorer, Windows Media Player, iTunes, Sound Recorder, and various Adobe and Apple applications. The Start button is also circled in red.
<p>Use the tools in the left of the window and start drawing.</p>	 A screenshot of the Microsoft Paint application window. The toolbar on the left side is circled in red. The main canvas is blank. The status bar at the bottom shows '351,214'.

**Note:** MS Paint is a standard MS application which is installed together with Windows it can be found in Start – Programs – Accessories – Paint

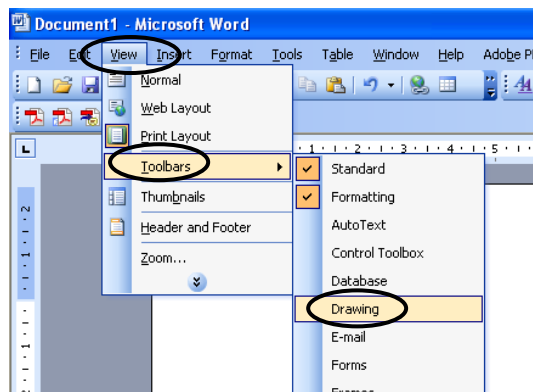
**Note:** The tablets support the "Wintab" standard, to know if your application fully supports the tablet with the pressure sensitivity check with the software supplier

# How to write, make a signature or draw in Microsoft Word

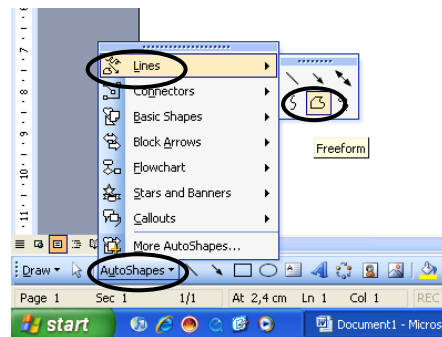
Open Microsoft Word



Open View – Toolbars – Select “ Drawing ”



Open AutoShapes – lines – select freeform



Start drawing.  
Pressing the pen = freehand  
Not pressing = point to point line  
You can use the image field as you would with your text field.

