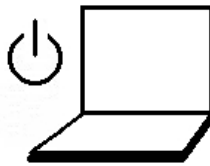


1

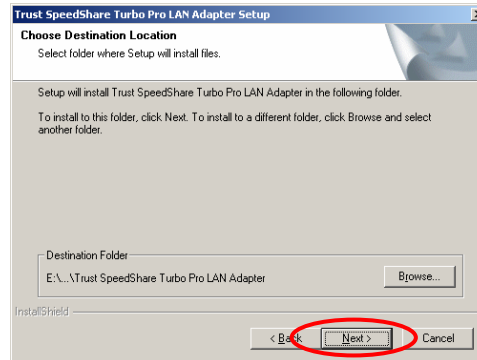
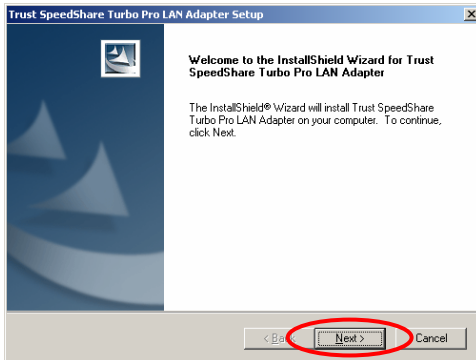


2

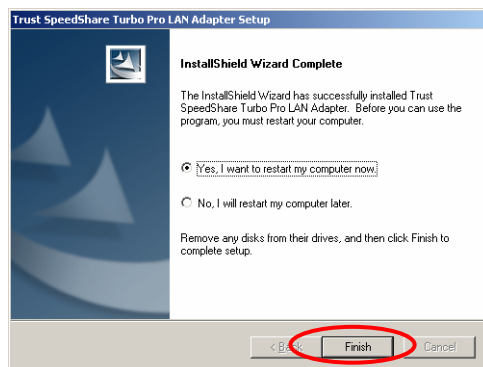


DRIVER

3



DRIVER



4

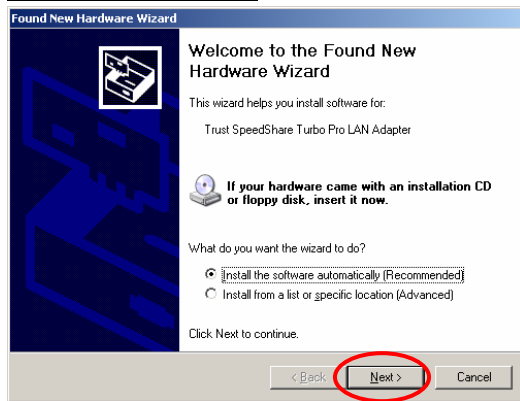


Windows 98 / Me -> 7

INSTALL

5

### Windows 2000 / XP:



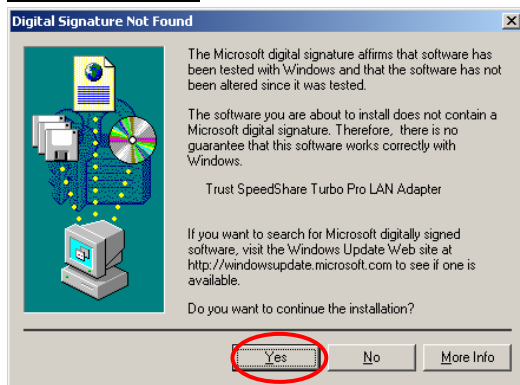
### Windows XP:



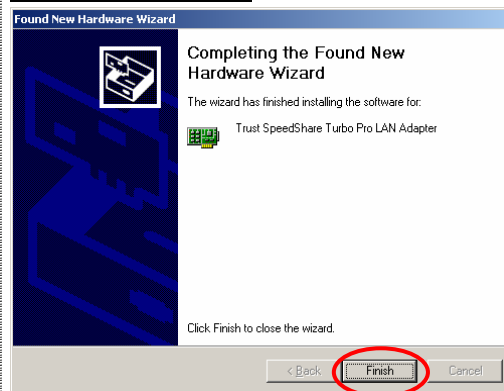
DRIVER

6

### Windows 2000:



### Windows 2000 / XP:



DRIVER

7

### Windows 98 / Me/ 2000 / XP:

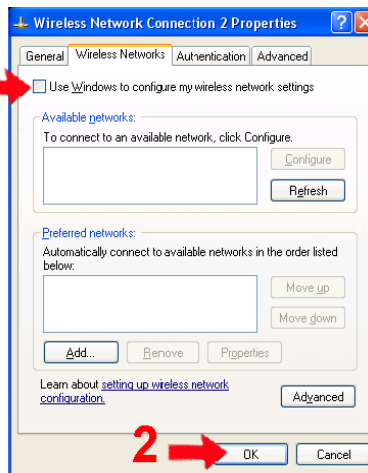
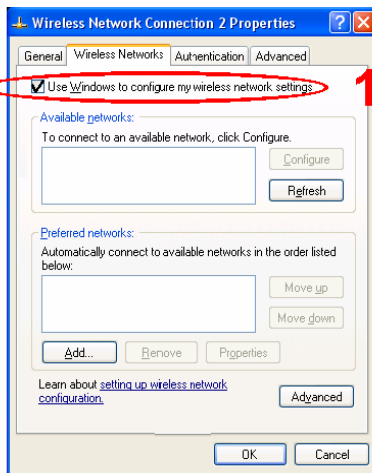
2x



CONFIG

8

### Windows XP:



2

3

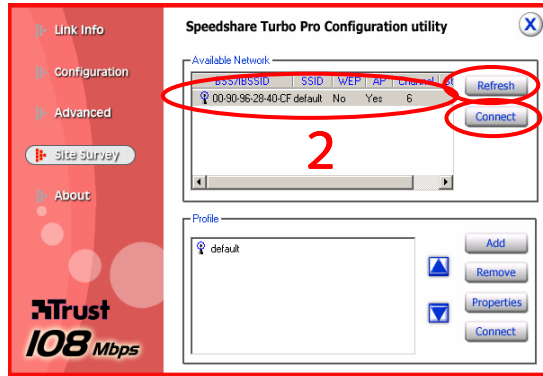
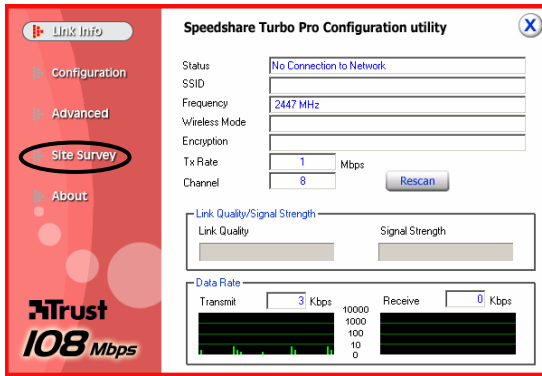


2X

CONFIG

### Connect to Existing Wireless Network

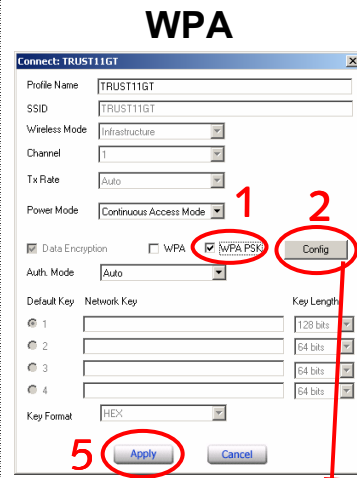
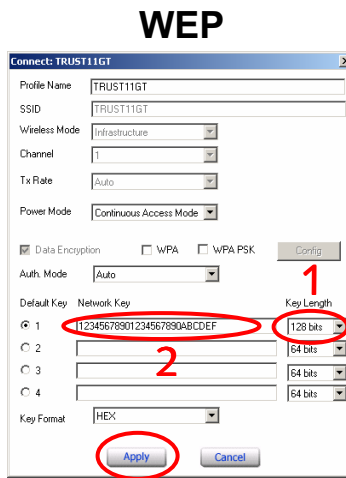
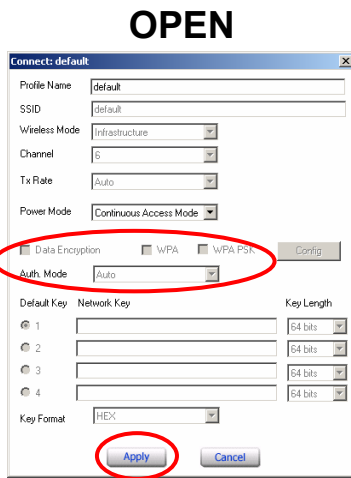
9



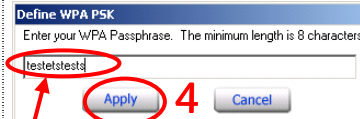
1  
3  
CONFIG

= Access Point (Infrastructure network)  
 = Computer (Ad-Hoc network)

10

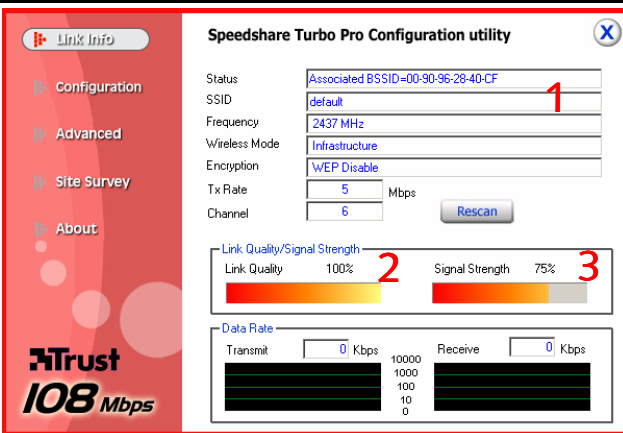


CONFIG



PASSWORD

11



**CHECK (Infrastructure):**  
 1 - Wireless Network name  
 2 - Link Quality 50%, >50%  
 3 - Signal Strength 50%, >50%

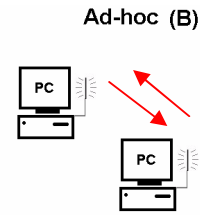
**CHECK (Ad-Hoc):**  
 1 - Wireless Network name

CONFIG

## Finish

### Start Ad-Hoc

12



CONFIG

- 1 = SSID: Wireless Network name
- 2 = Wireless Mode: Ad-Hoc = computer -> computer
- 3 = Support band:
  - 11B = 11 Mbps
  - 11G = 54 Mbps
  - 11G TURBO = 108 Mbps
- 4 = Adhoc Band: 11g
- 5= Channel: 1-13. Advice: 1 for EU, 13 for France

13

- 1 = Encryption: Enable (WEP).
- 3 = Key length 64, 128, 154.  
Advice 28 bits
- 2 = Network key: WEP key (password)

CONFIG

14

- CHECK:**
- 1 - = 'Joined IBSSID= ....'
  - 2 - Your Wireless Network name
  - 3 - Wireless Mode = Ad-hoc

**CHECK:**  
- Computer TCP/IP - IP address / Netmask

CONFIG

**Finished**  
2<sup>nd</sup> computer -> 9