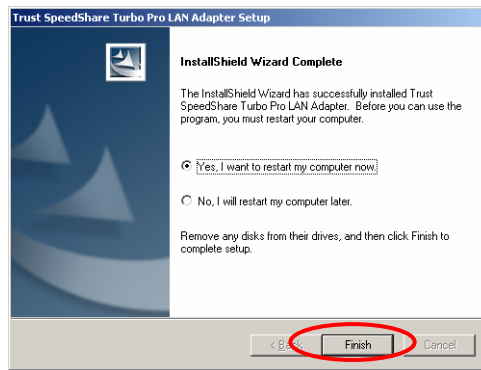
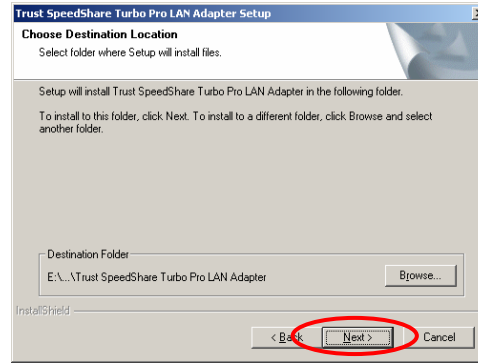
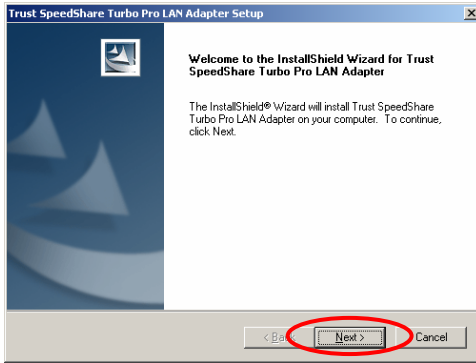


1



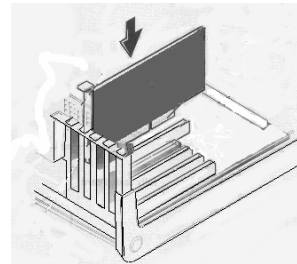
DRIVER

2



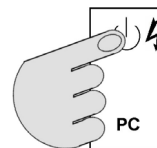
DRIVER

3



INSTALL

4

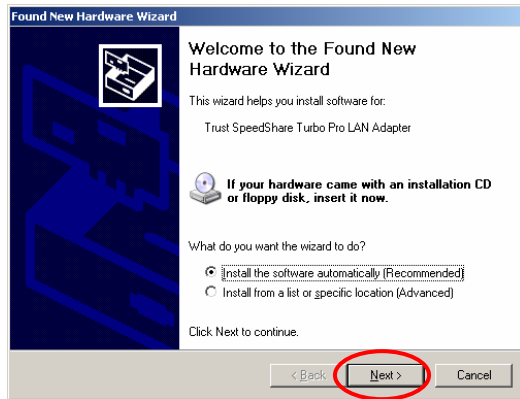


INSTALL

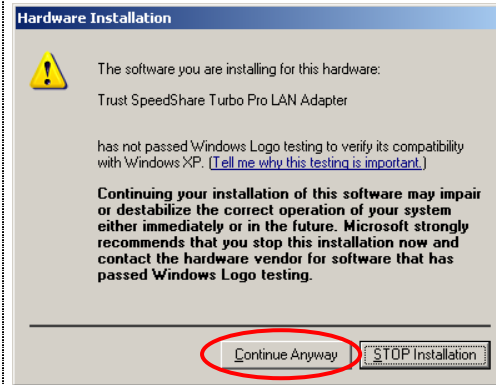
Windows 98 / Me -> 7

5

Windows 2000 / XP:



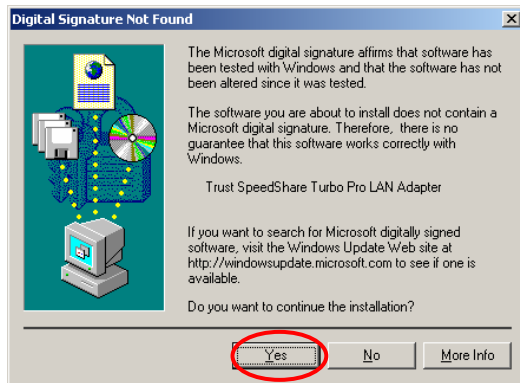
Windows XP:



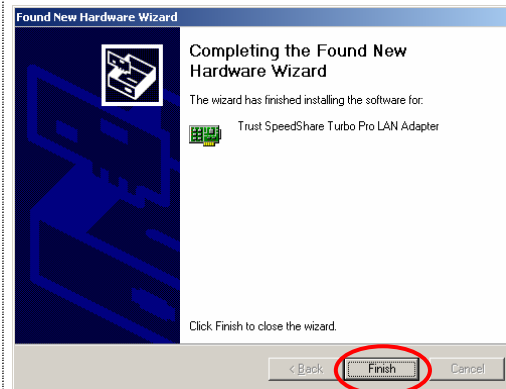
DRIVER

6

Windows 2000:



Windows 2000 / XP:



DRIVER

7

Windows 98 / Me/ 2000 / XP:

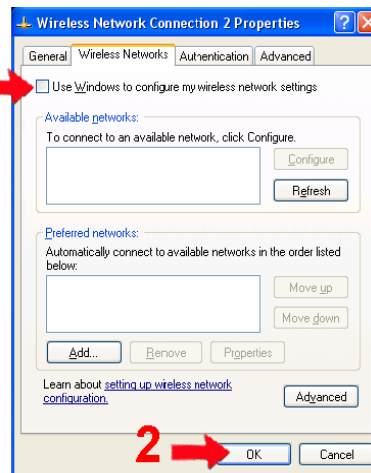
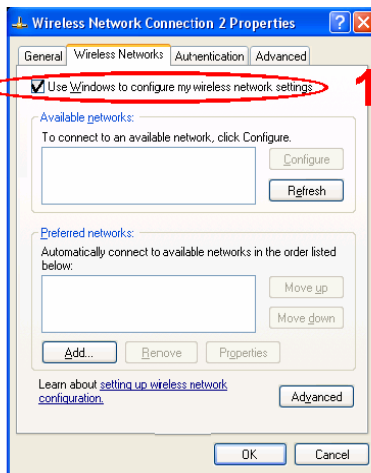
2x



CONFIG

8

Windows XP:



2

3



2X

CONFIG

Connect to Existing Wireless Network

9

1
3
CONFIG

= Access Point (Infrastructure network)
 = Computer (Ad-Hoc network)

10

CONFIG

PASSWORD

11

CHECK (Infrastructure):
 1 - Wireless Network name
 2 - Link Quality 50%, >50%
 3 - Signal Strength 50%, >50%

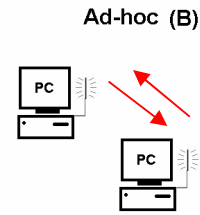
CHECK (Ad-Hoc):
 1 - Wireless Network name

CONFIG

Finish

Start Ad-Hoc

12



CONFIG

- 1 = SSID: Wireless Network name
- 2 = Wireless Mode: Ad-Hoc = computer -> computer
- 3 = Support band:
 - 11B = 11 Mbps
 - 11G = 54 Mbps
 - 11G TURBO = 108 Mbps
- 4 = Adhoc Band: 11g
- 5 = Channel: 1-13. Advice: 1 for EU, 13 for France

13

- 1 = Encryption: Enable (WEP).
- 3 = Key length 64, 128, 154.
Advice 28 bits
- 2 = Network key: WEP key (password)

CONFIG

14

- CHECK:**
- 1 - = 'Joined IBSSID='
 - 2 - Your Wireless Network name
 - 3 - Wireless Mode = Ad-hoc

- CHECK:**
- Computer TCP/IP - IP address / Netmask

CONFIG

Finished
2nd computer -> 9