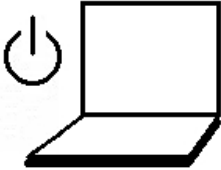


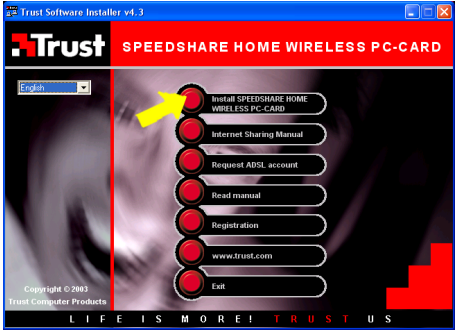
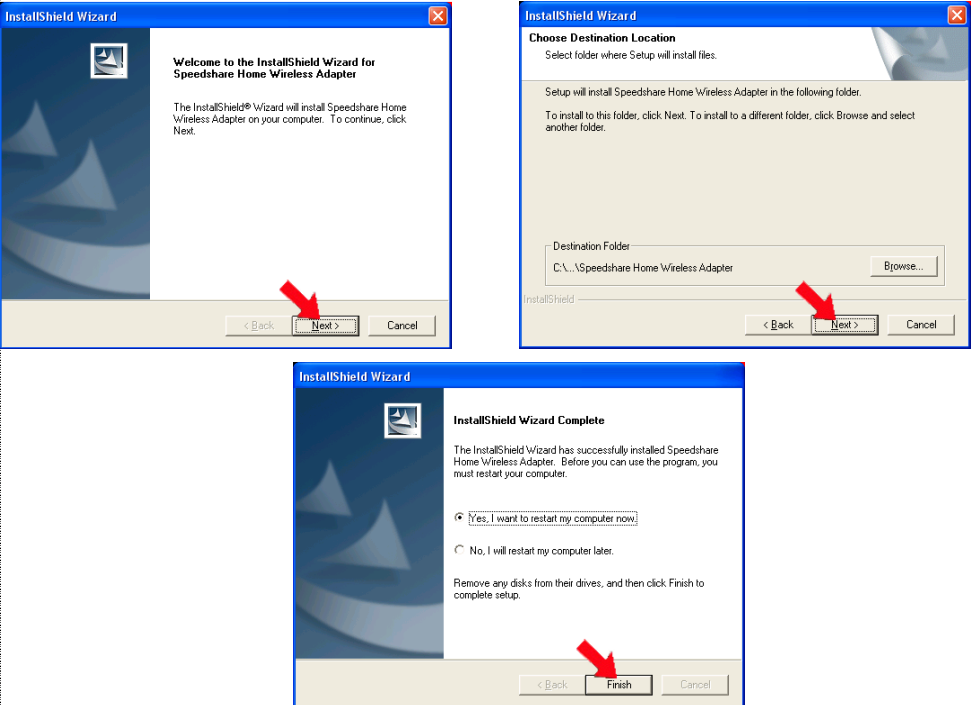


1		
2		CONFIG
3		CONFIG
4		CONFIG

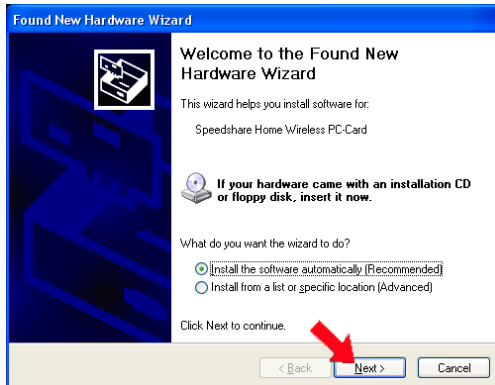
5



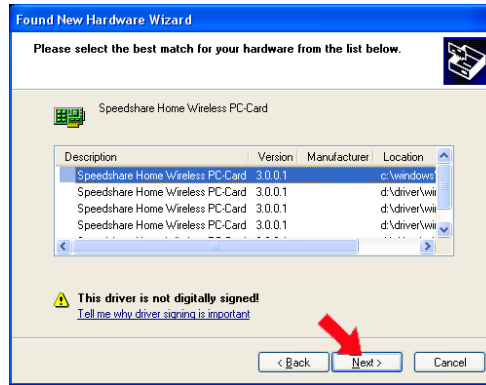
CONFIG

6

Windows 2000 / XP:



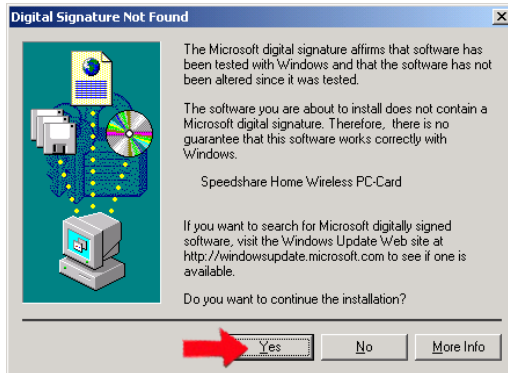
Windows XP:



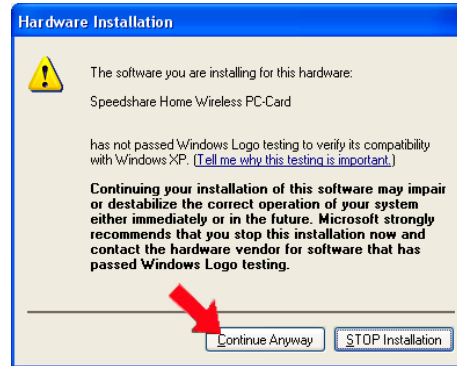
CONFIG

7

Windows 2000 (2X):



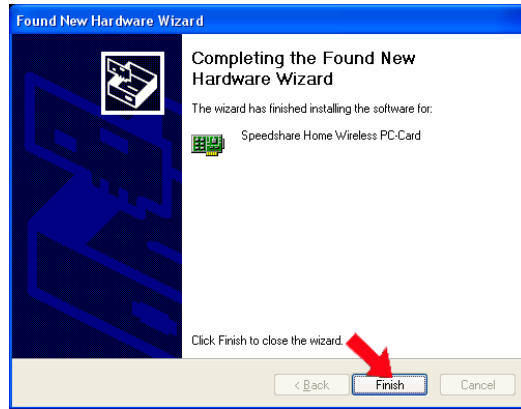
Windows XP:



CONFIG

Windows 2000 / XP:

8



CONFIG

Windows 98 / Me/ 2000 / XP:

9

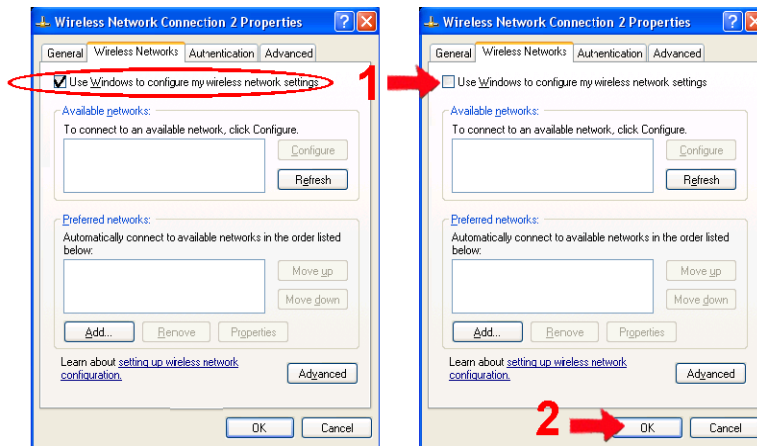
2x



CONFIG

Windows XP:

10

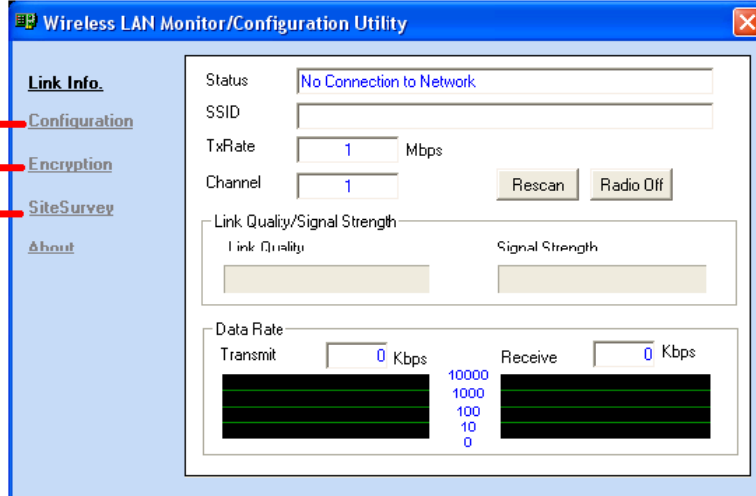


2X

CONFIG

11

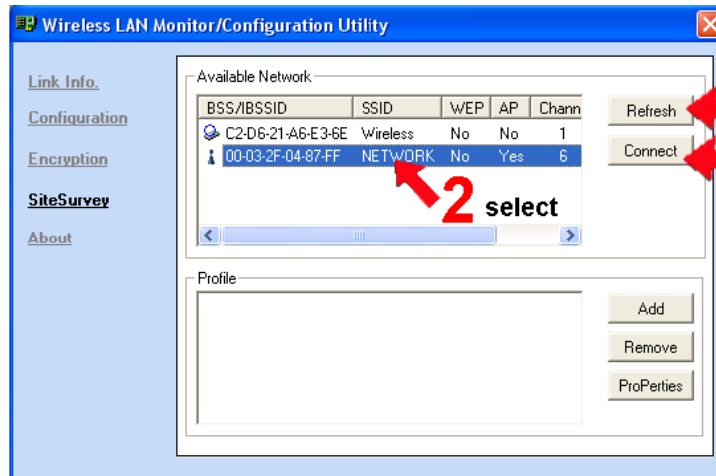
Configuration (15)
Encryption (16)
SiteSurvey (12)



CONFIG

12

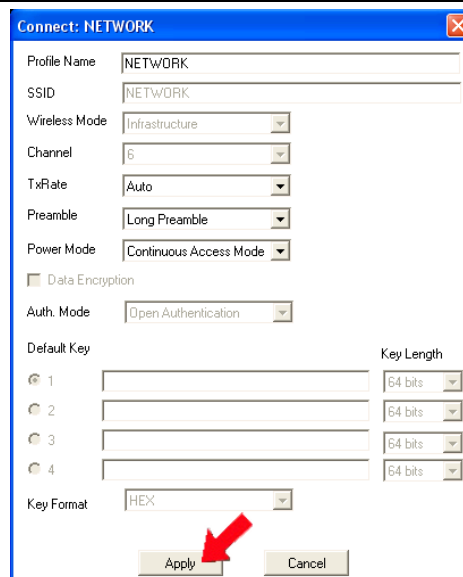
SiteSurvey



1 Refresh
3 Connect

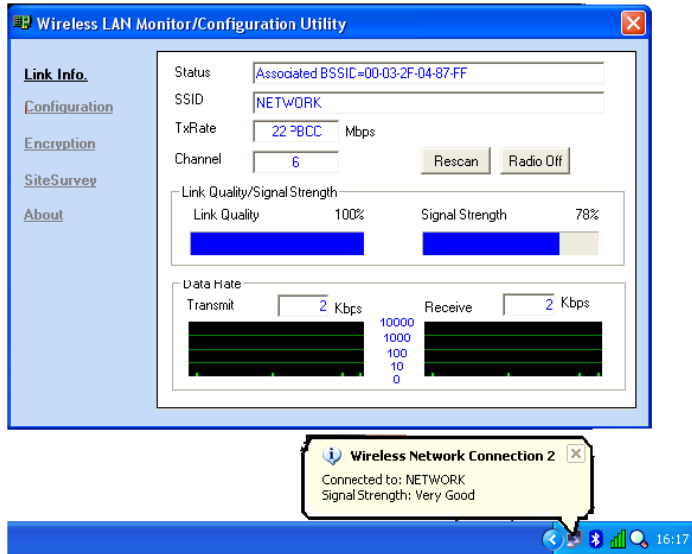
CONFIG

13



CONFIG

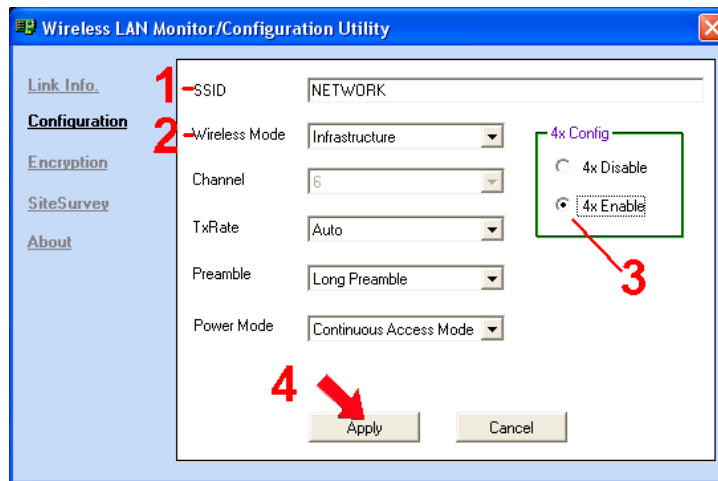
14



CONFIG

Configuration

15

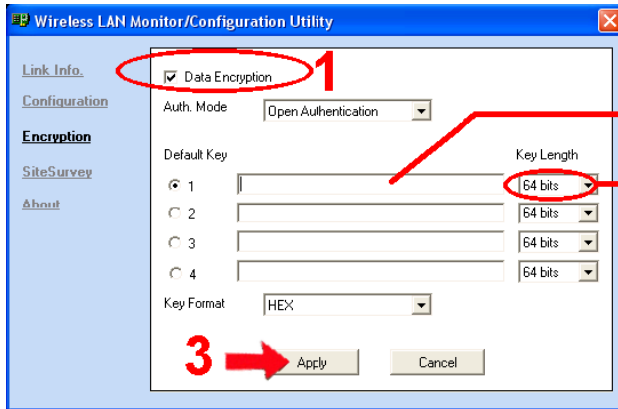


CONFIG

- 1 = SSID : Network name
- 2 = Wireless Mode : Infrastructure = Networks (18A)
Ad-Hoc = computer -> computer (18B)
- 3 = 4x Config : 4x Disable = 22Mbps
4x Enable = 44Mbps

Encryption

16

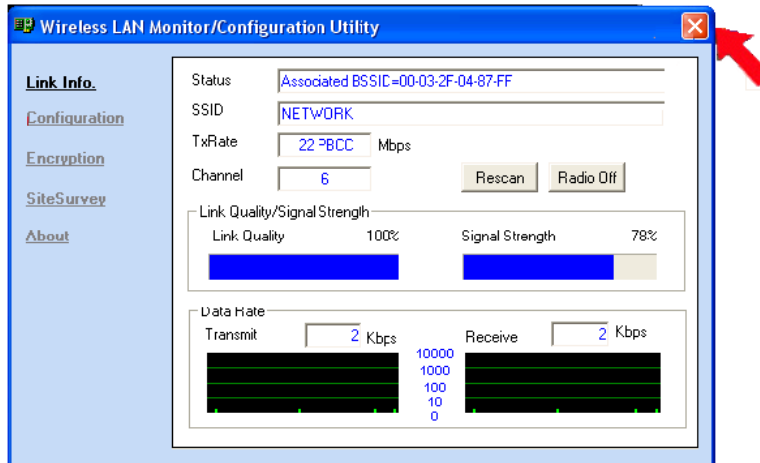


Keycode = Keycode SSID network

Key Length:
64 bits = 10 characters
128 bits = 16 characters
256 bits = 58 characters

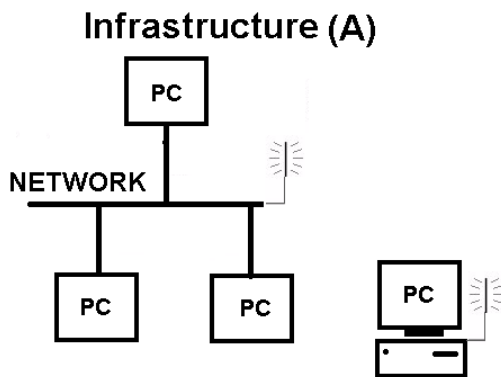
CONFIG

17

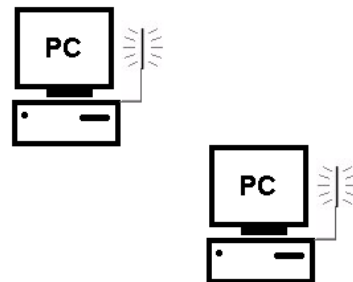


CONFIG

18



Ad-hoc (B)



Finish