



500N SPYC@M

500N SPYC@M

User's manual

UK

DE

FR

IT

ES

PL

NL

LIFE IS MORE! TRUST US

TRUST.COM

**Trust**

500N SPYC@M

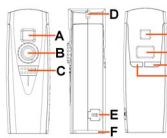


Fig. 1

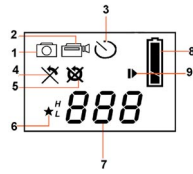


Fig. 2



Fig. 3



Fig. 4

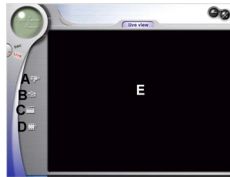


Fig. 5

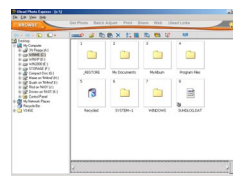


Fig. 6

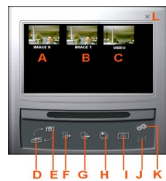


Fig. 7

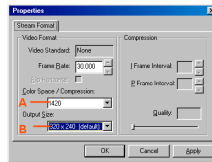


Fig. 8

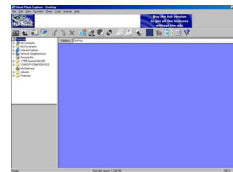


Fig. 9



Fig. 10



Fig. 11



Fig. 12

LIFE IS MORE! TRUST US

TRUST.COM

Thank you for your purchase. Register your product via our Internet site at [www.trust.com](http://www.trust.com), so that you will be eligible for optimal guarantee and service support. You will also be automatically informed of the development of your and other Trust products.



Vielen Dank, dass Sie unser Produkt gekauft haben. Registrieren Sie jetzt ihr Produkt auf unserer Website, [www.trust.com](http://www.trust.com), so dass Sie unsere optimale Garantie- und Serviceunterstützung in Anspruch nehmen können. Außerdem werden Sie automatisch über die Entwicklung Ihres und anderer Produkte auf dem Laufenden gehalten.

Nous vous remercions de votre achat. Enregistrez-le maintenant sur notre site Internet, [www.trust.com](http://www.trust.com). et vous aurez droit à une garantie et un soutien de service optimaux. En outre, vous serez informé automatiquement des mises à jour de votre produit et des autres produits de Trust.

Grazie per aver acquistato un prodotto Trust. Registra l' acquisto effettuato presso il sito internet Trust ([www.trust.com](http://www.trust.com)), in questo modo potrà usufruire dell' assistenza e della garanzia. Inoltre potrà ottenere informazioni aggiornate sulle novità riguardanti il suo prodotto ed anche gli altri prodotti Trust.

Muchas gracias por su adquisición. Registre ahora su adquisición a través de nuestro sitio en Internet, [www.trust.com](http://www.trust.com), de modo que tenga derecho al soporte de garantía y de servicio óptimo. Se mantendrá, además, automáticamente al corriente de los desarrollos de su producto y de los demás productos de Trust.

Serdecznie dziękujemy za zakup naszego produktu. Rejestrując już teraz swój zakup na stronie internetowej firmy Trust, [www.trust.com](http://www.trust.com), uzyskacie Państwo optymalne wsparcie gwarancyjne i serwisowe. Ponadto będziecie Państwo automatycznie informowani o wszelkich zmianach odnośnie tego i innych produktów firmy Trust.

Hartelijk dank voor uw aankoop. Registreer nu uw aankoop via onze internet site, [www.trust.com](http://www.trust.com), zodat u in aanmerking komt voor optimale garantie- en service ondersteuning. Bovendien wordt u automatisch op de hoogte gehouden van de ontwikkeling van uw en andere Trust producten.

<b>www.trust.com</b>	
<b>Residents in the UK and Ireland should contact: .....</b>	
<b>UK Office</b>	
From	Phone +44-(0)0845-6090036
8:00 - 16:00	Fax +44-(0)1376-514633
<b>I residenti in Italia possono contattare:</b>	
<b>Ufficio italiano</b>	
Orario:	Telefono +39-051-6635947
9:00 - 13:00 /	Fax +39-051-6635843
14:00 - 18:00	
<b>Les habitants de la France et de l'Afrique du Nord peuvent contacter :</b>	
<b>Bureau français</b>	
De	Téléphone +33-(0)825-083080
9:00 à 17:00	Fax +33-(0)1-48630261
<b>Kontaktadresse für Einwohner Deutschlands:</b>	
<b>Deutsche Geschäftsstelle</b>	
Erreichbar:	Telefon 0800-00TRUST (0800-0087878)
9:00 - 17:00	Fax +44-(0)2821-58873
<b>Los habitantes de España pueden ponerse en contacto con:</b>	
<b>Oficina española</b>	
De las	Telefono +34-(0)902-160937
9:00 a las 17:00	Fax +31-(0)78-6543299
horas	
<b>Inwoners van Nederland kunnen contact opnemen met:</b>	
<b>Kantoor Nederland</b>	
Van	Telefoon 0800-BELTRUST (0800-23587878)
9:00 - 17:00 uur	Fax +31-(0)78-6543299
<b>All other countries / Alle anderen Länder / Tous les autres pays</b>	
<b>Tutti gli altri paesi / Todos los demás países / Alle andere landen</b>	
<b>European Head Office</b>	
From:	Phone +31-(0)78-6549999
9:00 - 17:00	Fax +31-(0)78-6543299

<b>Instructions when using for the first time</b>	<b>Chapter</b>	
1. Inserting the batteries	(3)	
2. Taking photographs	(5)	
3. Installing the driver	(6.2)	
4. Connecting the camera	(6.3)	!
5. Loading photographs	(8.1)	



## 1 Introduction

This instruction manual is for users of the TRUST 500N SPYC@M. This camera is suitable for making a maximum of 160 recordings. The camera has a 16 MB = 128 Mbit internal flash memory, webcam function, video function, automatic exposure, lens with a fixed focal length and an extra macro option.

## 2 Safety

### 2.1 General information

Carefully read the following instructions before use:

- The TRUST 500N SPYC@M does not require any special maintenance. Use a slightly damp, soft cloth to clean the camera.
- Do not use aggressive substances, such as petrol or white spirit, to clean the device. These may harm the material.
- Do not submerge the device in liquid. This may be dangerous and will damage the device. Do not use this device near water.
- Make sure nothing is placed on the cable. Do not use this device in an area where the cable can become worn or damaged as a result of people walking over it.
- Do not repair this device yourself.

### 2.2 Batteries

1. The alkaline batteries supplied are not rechargeable. Do not try to recharge them, because this may cause them to explode.
2. Never throw the batteries onto an open fire. The batteries may explode.
3. Never drill holes into the batteries.
4. Keep the batteries out of the reach of small children.
5. Only use AA alkaline or rechargeable AA NiMH/1600 mA batteries with this camera.
6. When the batteries are empty, ask your local authority where you can dispose of them.

**Note:** *Do not use old and new batteries at the same time, because the old batteries may deplete the new ones.*

**Note:** *The batteries should be removed if the camera is not going to be used for some time. This will save the battery capacity.*

### 3 Batteries

#### 3.1 Inserting the batteries

1. Open the battery flap.
2. Insert the two AA batteries as shown on the battery flap.
3. Close the battery flap again by pushing it downwards slightly and sliding it closed.
4. The camera will turn on automatically.
5. The TRUST 500N SPYC@M is now ready for use.

**Note:** *Inserting the batteries incorrectly may damage the camera.*




**Note:** *If you wish to replace the batteries with other non-rechargeable batteries, only use alkaline batteries.*

**Note:** *If you wish to use rechargeable batteries, only use rechargeable Ni-MH/1600 mA batteries.*

**Note:** *The camera cannot be turned off manually. It will turn off automatically after 60 seconds.*

#### 3.2 Battery status

The battery condition is shown on the LCD screen as follows:

	The batteries are full.
	The battery capacity is low. When the camera is turned on, the symbol will flash three times and the camera will make a sound to indicate that the batteries should be replaced. Only a few more photographs can be taken. To avoid losing the photographs, all the photographs should be downloaded onto your computer before replacing the batteries.
	The batteries are empty. When the camera is turned on, this symbol will flash five times and the camera will turn itself off automatically. Replace the batteries.

**Table 1: Battery conditions**

**Note:** *The TRUST 500N SPYC@M has an internal battery for saving the camera's memory when replacing the batteries. This battery has a back-up time of 5 minutes and is charged by the USB port and the replaceable batteries.*

**Note:** *To avoid losing photographs, make sure the internal battery is charged when replacing the batteries.*

**Note:** *Do not use old and new batteries at the same time, because the old batteries may deplete the new ones.*

## 4 Camera functions

### 4.1 Buttons








Use table 2 in combination with figure 1.

Item	Description	Function
A	Viewfinder	For viewing the image to record.
B	LENS + Focus ring	Records the images to be photographed and can be used to set the image to the normal or macro mode.
C	Exposure button	Takes a photograph.
D	Wrist strap attachment	Attach the wrist strap here.
E	USB connection	Connect the USB cable here.
F	Battery cover	Closes the battery compartment.
G	Viewfinder	For viewing the image to record.
H	LCD screen	Displays the life span of the battery, the number of photographs, the photograph number and the photograph quality
I	MODE (menu) button + ON button	Changes the camera mode. The camera is turned ON using this button. The camera is turned off automatically after 60 seconds.
J	'Resolution' switch.	Switch for selecting the high resolution (1280 x 960) or the low resolution (624 x 480).

Table 2: Camera functions

### 4.2 LCD screen

Use table 3 in combination with figure 2.

Item	Symbol	Description	Function
1		Photo function	One photograph is taken at a time.
2		VIDEO	Records a video.
3		Automatic exposure	Takes photographs after a time delay of 10 seconds.
4		Delete last photograph	Deletes the last photograph from the memory.
5		Delete all the photographs	Deletes all the photographs from the memory.
6		Resolution choice	Photo: H = 1248x960 resolution L = 624x480 resolution Video (AVI): H = 624x480 resolution L = 304x240 resolution (See chapter 8.1.1 for 3.3Mpix photographs.)
7		Number of photographs	Indicates the number of





Item	Symbol	Description	Function
			photographs which have already been taken.
8		Battery capacity	Shows the amount of energy remaining in the batteries. If this is black, then the batteries are full. If this is empty, then the batteries are empty.
9		USB indicator	The USB cable is connected when this symbol is visible.

Table 3: LCD functions

## 5 Using the camera

### 5.1 Making recordings

#### 5.1.1 Adjusting the focus

Before taking a photograph, you must set the distance from the object to be photographed to the camera using the focus ring (B, figure 1). You can choose between two different settings. The distance can be set from 40 cm to infinity. The table below shows which symbol corresponds to which distance.



Symbol	Description
	For distant objects (180 cm – infinity).
	For close by objects (40 cm – 180 cm).

Table 4: Distances

#### 5.1.2 Setting the resolution

The TRUST 500N SPYC@M allows you to take photographs and to make videos in two different resolutions. For photographs: high (1248 x 960) and low (624 x 480). For videos clips: high (624 x 480) and low (304 x 240). The default setting when the camera is turned on is the high resolution. When in this resolution, you can take 40 photographs and record 10 seconds of video. In the low resolution, you can take 160 photographs and records 30 seconds of video. Carry out the following to change the camera to the low resolution:

1. Turn the camera on by pressing the 'Mode' button (I, figure 1) for a couple of seconds.
2. Press the 'Resolution' button (J, figure 1) to change the resolution. 'H' indicates the high resolution and 'L' indicates the low resolution.

**Note:** *The camera is automatically placed in the sleep setting when it is not used for 60 seconds.*





### 5.1.3 Taking a photograph

1. The camera's default setting is the photograph function. If this is not the case, press the mode button (I, figure 1) until a photographic camera is shown in the top left-hand corner of the LCD screen (1, figure 2).
2. The camera is now ready to take a photograph.
3. Direct the camera towards the object that you wish to photograph.
4. Press the exposure button (C, figure 1). The camera will beep and the photo counter will flash.
5. The next photograph can be taken when the photo counter no longer flashes.
6. The photographs will be saved in JPG format in the camera's flash memory.

**Note:** *The quality of the photograph depends on the amount of light. The more light, the better the quality of the photograph.*

**Note:** *The number of photographs that can be taken depends on the number of colours and the brightness of the object to be photographed. A photograph of a colourful, bright object requires more memory than a photograph of a dark object in dark surroundings.*

**Note:** *Keep the glass lens clean so as not to affect the quality of the photographs. Use a soft, dry cloth or a cotton bud to clean the lens. **NEVER** use (aggressive) cleaning products.*

**Note:** *The image viewed through the viewfinder may be slightly different to what is recorded through the lens.*

### 5.1.4 Recording a video

1. Press the mode button (I, figure 1) until the video camera appears in the top left-hand corner of the LCD screen (2, figure 2).
2. Press the exposure button once to start recording.
3. Press the exposure button again to stop recording.
4. The video will be saved in AVI format in the temporary SDRAM memory.

**Note:** *Video recordings are saved in the SDRAM memory. The recording will be deleted when you remove the batteries. The video recording is not deleted when the camera is placed in the standby setting.*

**Note:** *Video recordings do not contain sound.*

### **5.1.5 Using the automatic exposure**

1. You can take a photograph of yourself using the automatic exposure function.
2. Use the mode button (I, figure 1) to select the automatic exposure icon (3, figure 2) in the LCD screen.
3. Press the exposure button (C, figure 1) to activate the automatic exposure.
4. The camera will make a slow beeping noise.
5. The camera will start to beep more quickly just before the photograph is taken.
6. The photograph has been taken once the camera no longer beeps and the photo counter no longer flashes.

## **5.2 Deleting photographs**

### **5.2.1 Deleting the last recording**

1. To delete the last photograph, press the mode button (I, figure 1) until icons 1 and 4 in figure 2 are displayed.
2. Press the exposure button (C, figure 1) twice.
3. The last photograph will be deleted.
4. To delete the last video, press the mode button (I, figure 1) until icons 2 and 4 in figure 2 are displayed.
5. Press the exposure button (C, figure 1) twice.
6. The last video recording will be deleted. The screen will continue to flash to indicate that the camera is ready to delete another recording.
7. Press the mode button (I, figure 1) when you have finished deleting recordings.

### **5.2.2 Deleting all the recordings**

1. To delete all the photographs, press the mode button (I, figure 1) until icons 1 and 5 in figure 2 are displayed.
2. Press the exposure button (C, figure 1) twice.
3. All the photographs will be deleted.
4. To delete all the video recordings, press the mode button (I, figure 1) until icons 2 and 5 in figure 2 are displayed.
5. Press the exposure button (C, figure 1) twice.
6. All the video recordings will be deleted.

## 6 Installation



### 6.1 Uninstalling old drivers and devices

The most common cause of faults during installation is the presence of a driver for a similar, old product. The best solution is to first remove all drivers related to old devices before installing the new driver. Make sure you only delete programs for old, unused (similar) products.

1. Enter the Windows 'Safe Mode' (press F8 when starting Windows and then select 'Safe Mode' from the menu which is displayed).
2. Click on 'Start – Settings – Control Panel' and double-click on the 'Add/Remove Programs' icon.
3. Find all the programs for similar, old devices and remove these by clicking on the 'Add/Remove' button. When in the 'Safe Mode', it is possible for some programs to appear twice. In that case, remove all the programs which appear twice.
4. Restart the computer.

### 6.2 Installing the driver in Windows 98SE / Windows ME / Windows 2000 / Windows XP

**Note:** The latest driver can be downloaded from [www.trust.com/13143](http://www.trust.com/13143). Check whether a new driver is available and use this for the installation. The current version of the driver is included on the Trust Installation CD-ROM.

**Note:** Make sure all other programs are closed during the installation.

**Note:** During installation in Windows XP, you may receive a message saying that the driver has not been signed. This does not cause a problem for the functionality.

**Note:** In the example, 'D:' is used to indicate the CD-ROM drive. This may be different for your computer.

1. Insert the CD-ROM into your computer's CD-ROM drive. The Trust Software Installer will start automatically. If it does not start automatically, carry out the following:
  - a) Select 'Run' from the Start menu.
  - b) Type [D:\SETUP.EXE] and click on 'OK' to start the Trust Software Installer.
2. The Trust Software Installer window will appear (see figure 3).
3. Select the language you wish to use for the installation.
4. Click on '500N SPYC@M' to start the installation of the camera.
5. Follow the on-screen instructions.

The driver and software for the 500N SPYC@M has now been completed. The installation of the other programs is described later in this instruction manual.

### 6.3 Connecting the camera

1. Make sure your computer is turned on.
2. Connect the USB cable to the camera's USB port (E, figure 1).
3. Connect the other end of the USB cable to your computer.
4. Windows will detect and install the camera. If Windows starts the installation Wizard, follow the on-screen instructions.
5. It is now possible to load the recordings in the camera onto your computer. See chapter 8.1.1 for a description of the Trust Spyc@m Manager.

**Note:** The camera cannot be turned off whilst it is connected to the computer's USB port. The camera uses the power from the computer's USB port. The batteries will not be used.

#### 6.4 Checking after the installation

After installing the device and the driver, the following are installed on your computer and can be checked:

'Start – Settings – Control Panel'. Double-click on the 'System' icon and select the 'Device Manager' tab.

- Imaging device – TRUST 500N SPYC@M, WDM Video Capture
- Universal Serial Bus controllers - TRUST 500N SPYC@M, USB Camera
  - TRUST 500N SPYC@M, WDM DSC I/O driver

'Start – Settings – Control Panel' and then double-click on the 'Add/Remove Programs' icon.

- TRUST 500N SPYC@M
- Start - Programs - Trust - 500 SPYC@M
- TRUST 500N SPYC@M
- Uninstall TRUST 500N SPYC@M

**Note:** *The information given above will vary when the installation has been altered by the user (for example, not everything has been installed or locations other than the default locations have been selected).*

**Note:** *Deviations may also occur as a result of using new drivers available on the Internet.*

**Note:** *The location or name may vary in the 'Control Panel' for different operating systems.*

### 7 Installing the application software

A number of programs are supplied with the camera. These programs can be used for different applications. These programs are not required to use the camera, although it is recommended to install these to enjoy full use of all the options available concerning editing and processing photographs and video clips.

**Note:** *Make sure all other programs are closed during the installation.*

#### 7.1 Photo Express

Photo Express 4.0 is an image editing program that can be used to load and edit the photographs on your PC which you have taken using your 500N SPYC@M. This program requires 500 MB free hard disk space. Follow the instructions below to install Photo Express 4.0.

1. Start the Trust Software Installer (see figure 3).
2. Select 'Photo Express'.
3. Select the language you wish to use.
4. Follow the on-screen instructions.

#### 7.2 Photo Explorer

Ulead Photo Explorer 6 is an image explorer/editing program that can be used to load and edit the recordings on your PC which you have taken using your 500N SPYC@M. Follow the instructions below to install Photo Explorer 6.0.

1. Start the Trust Software Installer (see figure 3).
2. Select 'Photo Explorer'.
3. Select the language you wish to use.
4. Follow the on-screen instructions.



### 7.3 Video Studio

Ulead Video Studio is video editing program which you can use to load the video recording onto your computer, make live recordings and edit them. Follow the instructions below to install Video Studio.

1. Insert the Ulead VideoStudio CD-ROM into your CD-ROM drive.
2. The installation will start.
3. If the installation does not start, select 'Run' from the 'Start' menu.
4. Type [D:\SETUP.EXE] and click on 'OK'.
5. Select the language you wish to use.
6. Follow the on-screen instructions.

### 7.4 COOL 360

COOL 360 is an image editing program that can be used to change the photographs you have taken using the Trust 500N SPYC@M into panoramic photographs. Follow the instructions below to install COOL 360.

1. Start the Trust Software Installer (see figure 3).
2. Select 'Cool 360'.
3. Follow the on-screen instructions.

### 7.5 Video Live Mail

VideoLive Mail 4.0 can be used to send video and audio multimedia e-mails. To be able to use this application, you will need a modem, an ISDN modem or a broadband connection, a sound card with speakers, a microphone and an Internet connection.

1. Start the Trust Software Installer (see figure 3).
2. Select 'VideoLive Mail'.
3. Select the language you wish to use.
4. Follow the on-screen instructions.

### 7.6 Microsoft® NetMeeting (Windows 98/ Windows ME/ Windows 2000)

NetMeeting is a program that is supplied with Windows 98 / Windows ME / Windows 2000. With this program, you can use the Trust 500N SPYC@M as a webcam (video conferencing).

Windows XP does not have NetMeeting, but has Windows Messenger instead. To install this program, refer to your Windows XP instruction manual which is included with your Windows XP CD-ROM.

NetMeeting is installed as follows:

1. Click on the 'Start' button in the bottom left-hand corner of your desktop. Point to Programs -> Accessories -> Internet Tools and left-click on NetMeeting.
2. Click on 'Next' to continue.
3. Fill in your details, such as your Christian name, your surname, your e-mail address, your country and a comment that you would like to be displayed in the list. Next, click on 'Next'.
4. If you do not want to be displayed in the NetMeeting list, select 'Do not list my name in the directory'. Click on 'Next' to continue with the installation. Follow the on-screen instructions.
5. You must select a camera during the installation. Select the Trust 500N SPYC@M as the camera you wish to use for NetMeeting and click on 'Next' to continue.
6. Select 'Put a shortcut to NetMeeting on my desktop' if you wish to have a shortcut to NetMeeting on your desktop. Select 'Put a shortcut to NetMeeting on My Quick Launch bar' if you wish to

have a shortcut to NetMeeting on your Windows taskbar. You do not have to select either option if you do not wish to.

7. Click on 'Next' to continue with the installation. Follow the on-screen instructions to configure the sound and image settings.
8. At the end of the installation process, click on 'Finish' to complete the installation of NetMeeting. NetMeeting will now start automatically. See chapter 8.7 for instructions on how to use NetMeeting.

If you are not able to set or configure your audio settings, check whether the sound card and the devices satisfy the system requirements for NetMeeting and/or whether these have been correctly connected and installed.

### 7.7 Installing Windows Messenger (Windows XP)

As described in the installation of Microsoft® NetMeeting, NetMeeting is not included with Windows XP. Windows Messenger is included instead.

To use Windows Messenger, see the Windows XP instruction manual which is included with your Windows XP installation CD-ROM.

You can also download NetMeeting 3.01 from the Microsoft® website and install it. Windows Messenger is already installed in the Windows XP operating system. You can select Windows Messenger from the 'Start' menu to start the program. Follow the instructions to input your personal settings.

## 8 Using the software

### 8.1 500N SPYC@M Manager software

#### 8.1.1 Loading, saving and opening 3.3 Mpix photographs

**Note:** Only photographs taken in the highest resolution can be converted to 3.3 Mpix.

1. Make sure the camera is connected and turned on.
2. Click on 'Programs – Trust – 500N SPYC@M – Trust 500N SPYC@M'.
3. Figure 4 will appear.
4. Click on icon A in figure 4.
5. The 'Load DSC' window will appear containing a list of files. These files are the photographs and video clips which you have made using the camera.
6. You can also take photographs in this window as follows:
  - Select the image format: VGA (624x480) or SXGA (1248x960).
  - Select: Adjust format.
  - Select: Take a photograph.
  - The photograph is now in the camera's memory.
  - Click on the refresh button to add the photograph to the list of other photographs.
7. Select the files which you wish to load onto your computer. A thumbnail of the selected file will be displayed in the bottom right-hand corner.
8. Select 'Enhanced' to load the photograph onto your computer in 3.3 Mpix. This option is located in the top right-hand corner of the window.
9. Next, click on 'Load'.
10. The photographs will now be loaded from the camera's memory into the Camera Manager program (see J, figure 4).
11. Left-click on the photograph that you wish to load. If you wish to load all the photographs, click on E in figure 4.
12. Next, right-click on the photograph and select 'Save As'.
13. A standard Windows window will appear in which you can type a file name and location for the file you wish to save.
14. Click on 'OK' to save the file.

15. Close the Camera Manager and go to the location where you have saved the photograph.
16. Open the file by double-clicking on it. The file will be opened in your default editing program.

**Note:** Do not select 'Enhanced' if you do not wish to load the photograph with a resolution of 3.3 Mpix.

**Note:** Do not remove the USB cable whilst loading photographs.


 UK

#### 8.1.2 Loading video recordings

1. Carry out points 1 to 6 in chapter 8.1.1.
2. Click on 'Load'.
3. Select the AVI format. Standard AVI files are large files. Original AVI files, also called compressed AVI files, are smaller files.

#### 8.1.3 Sending a recording via e-mail

1. Carry out points 1 to 9 in chapter 8.1.1.
2. Next, click on B in figure 4.
3. Select a recording from location K in figure 4 by left-clicking on it.
4. Click on G in figure 4 to send the recording via e-mail.

#### 8.1.4 Making a live recording

1. Click on 'Live' (button D in figure 4).
2. Figure 5 will appear.
3. Click on D in figure 5. A 'Properties' window will appear.
4. You can change the image settings in this window.
5. The 'Video Settings' tab contains a 'Banding filter' option which you can use to set the frequency of the electrical mains. In Europe, this is usually 50 Hz. If necessary, contact your energy company. This prevents a flickering image when using indoor lighting.
6. You can also alter the brightness, contrast and colour settings in the 'Video Proc. Amp' tab.
7. Once you have made the desired settings, click on 'Apply' and then 'OK'.
8. Click on C in figure 5.
9. Figure 8 will appear. Here, you can alter the colour settings, the image size and the frames per second (see table 5 and figure 8).
10. Once you have made the desired settings, click on 'Apply' and then 'OK'.
11. Click on A in figure 5 to make a video recording or click on B in figure 5 to take a photograph.
12. The recordings will appear immediately in the SPYCAM Manager.
13. You can save the recordings or send them via e-mail as described in chapters 8.1.1 to 8.1.3.

## 8.2 Ulead Photo Express

### 8.2.1 Loading photographs

1. Click on 'Start – Programs – Ulead Photo Express 4.0 SE – Ulead Photo Express 4.0 SE'. Figure 6 will appear.
2. In the main Photo Express menu, select 'Get Photo' and then select 'Digital Camera'.
3. The TRUST 500N SPYC@M is visible in this window. Select 'Digital camera' and click on 'OK'.
4. TRUST 500N SPYC@M will now be seen for 'Select data source' in the top left-hand corner of the window. You may have other cameras installed on your computer. If this is the case, a different model may be visible. Select the TRUST 500N SPYC@M.
5. Click on 'Acquire'. The TWAIN window will appear (see figure 7).

	Function	Description
A	Photo	Photograph taken in the highest resolution (1248x960).
B	Photo	Photograph taken in the lowest resolution (624 x 480).
C	Videoclip	Can be recognized by VIDEOXXXX.
D	Video mode	Live image.
E	Camera mode	The photographs in the camera's memory.
F	Transfer	Transfers the chosen recording to the application.
G	Transfer All	Transfers all the recordings to the application.
H	SAVE AVI	Saves the video clip (B) on the computer.
I	Snap Shot	Takes a photograph.
J	Format	The camera settings can be changed (colour, contrast, brightness, etc.).
K	Settings	Camera settings.
L	EXIT	Closes the TWAIN window.

- Table 5: Explanation of the TWAIN window for the TRUST 500N SPYC@M**
6. Select the photograph (A or B) that you wish to transfer to Photo Express by clicking on it with the mouse.
  7. Click on 'Transfer' (F) to transfer the photograph to Photo Express 4.0. The photograph which has been selected in the TWAIN window will now appear in figure 6.
  8. Double-click on the photograph. The photograph will now appear in the window.
  9. This photograph can now be edited and/or saved on the computer.

### 8.2.2 Loading video clips

1. Please refer to figure 7 for loading video clips.
2. Click on the video clip (C).
3. Click on 'SAVE AVI' (H) to save the video clip. A standard Windows 'Save As' window will appear.
4. Select a location and give the file a name. Click on 'Open'.
5. The video clip will now be saved in the chosen location. Depending on the size of the recording, this may take some time.
6. To play the video clip, go to the location where it was saved and double-click on the file. The video clip will now be played, for example, in Windows Media Player.





### 8.2.3 Live video images

1. Click on 'Video mode' (D) (see figure 7).
2. Click on 'Format' (J) to alter the camera's image settings. Figure 8 will appear.

<b>A</b>	Colour settings (I420 / RGB 24)
<b>B</b>	Image size (640x480 / 320x240)

**Table 6: Image settings**

3. Adjust the colours and image size as required. Click on 'Apply' and then on 'OK'. Figure 8 will now close.
4. Click on 'Snap Shot' (I) to take a photograph of the live video image.
5. The photograph will be automatically loaded into Photo Express as a thumbnail.
6. Double-click on the photograph. The photograph will now appear in the window.
7. This photograph can now be edited and/or saved on the computer.

**Note:** For more detailed information on how to edit photographs in Photo Express, please refer to this program's instruction manual. Click on 'Start – Programs - Ulead Photo Express 4.0 – Screenbook' to read this. Acrobat Reader must be installed on your computer to be able to read this. The instruction manual is available in English, German, Spanish, French, Portuguese and Italian.

### 8.3 Ulead Photo Explorer

You can use the Ulead Photo Explorer photo editing software to open the TWAIN window for the 500N SPYC@M. A brief description of how to use the Trust 500N SPYC@M in Ulead Photo Explorer 6.0 is given below. For a detailed description of Photo Explorer, see the program's help function. Follow the instructions below to use the 500N SPYC@M in Photo Explorer:

1. Turn the camera on.
2. Start Ulead Photo Explorer.
3. The 'Device Type' window will appear only once. Choose the 'Camera' option to select the Trust 500N SPYC@M and click on 'OK'.
4. The main window will appear as well as the 'Set-up Internet Connection' window. Click on the 'Skip for now' button to close this window.
5. In the main window, click on 'File - TWAIN Acquire' and select the 'Select source...' option from the list.
6. Select the 'Trust 500N SPYC@M' from the list and click on 'Select'.
7. Click on the 'TWAIN Acquire' button on the taskbar in the main window.
8. The TWAIN window for the Trust 500N SPYC@M will appear. Click on 'Capture Still Image' to take a photograph.
9. The photograph will be immediately saved on your hard disk and be will displayed as a thumbnail in Photo Explorer.
10. Double-click on the thumbnail in the main window to edit the photograph in Photo Explorer (see figure 5).

**Note:** For more detailed information about Ulead Photo Explorer, see this program's detailed instruction manual. You can easily access this via the Trust Software Installer menu on the installation CD-ROM. The Trust Software Installer starts automatically when the CD-ROM is inserted into your CD-ROM drive (see figure 3). Click on the 'PHOTO EXPLORER MANUAL' button to open the manual directly from the CD-ROM. The instruction manual is only available in English.

## **8.4 Ulead Video Studio**

The Ulead VideoStudio video editing software can be used to edit your video and audio recordings by adding text, sound or various visual effects. You can then save these in AVI or MPEG format, for example, on your hard disk or CD-R, or publish them on the Internet in QuickTime MOV or RealMedia RM streaming media format. A short description of how to use the Trust 500N SPYC@M in Ulead VideoStudio 4.0 is given below. For a detailed description of VideoStudio, see the program's Help function. This will take you through the whole editing process step-by-step. Ulead VideoStudio 4.0 has 2 components, namely the 'Video Wizard' and the main program. A short description of the Video Wizard is given below.

### **8.4.1 Ulead Video Wizard**

You can use the Ulead Video Wizard component of VideoStudio to make a complete video, including sound, special effects and text, in 6 easy steps. Follow the instructions below:

1. Click on 'Start - Programs - Ulead VideoStudio 4.0 SE' and select 'Ulead Video Wizard' from the menu to start this program. The Video Wizard window will appear displaying your camera image (see figure 8).
2. Under 'Project name', enter a name for the new video project.
3. Continue with step 2 'Get Video' to make new video recordings
4. Click on the 'Begin' button to start recording. Click on the button again to stop recording. Keep doing this until you have all the desired video recordings.
5. Continue with step 3 'Arrange'. Here you can arrange the video recordings in the order desired by selecting a video clip and dragging it to the desired location.
6. Select a video clip and click on the 'Trim' button to indicate the start and end point of the video clip. Here you can cut bits from the beginning and end so that only the desired video fragment remains
7. Move the slide bar to the start point of the desired video fragment and click on the 'Start Trim' button. Next, move the slide bar to the end point of the desired video fragment and click on the 'Stop Trim' button. Next, return to the Video Wizard window.
8. Click on the 'Add Video' button if you want to add existing saved video recordings to the video project
9. Continue with step 4 'Add Effect' to add transition effects, background audio and a title to the video project
10. Under 'Transition effect', select the desired transition effect between the video clips.
11. Under 'Audio file', enter the location of a saved WAV audio file that you would like to use as background audio for this video project.
12. Under 'Title', enter a title that will be displayed at the beginning of the video project. Here, you can adjust the colour of the text, the background colour and the font.
13. Continue with step 5 'Create' to finish the video project. All video recordings, effects, sound and the title will be compiled into a film
14. Click on the 'Create Video File' button to complete the film, or the 'Open In VideoStudio' button to open the video project in the Ulead VideoStudio main program. Here you have many options for making a video project (see figure 9).
15. If you have clicked on 'Create Video File', go to step 6 'Play' to view the film you have made

You have now completed your video project.



#### 8.4.2 Main program of Video Studio

Ulead Video Studio's main program has many options for editing video and sound in your video project. Just as with the Video Wizard, you are led step-by-step through the entire editing process.

You can start the main program by clicking on 'Start – Programs – Ulead VideoStudio 4.0 SE' and then selecting 'Ulead VideoStudio 4.0 SE' from the menu, or by starting it from the Video Wizard (see figure 9).

The 8 steps for editing a video from start to finish are shown at the top of the main window. You can use this menu to easily switch between the various steps in the process. A short summary of the various steps is given below.

1. **Start:** Start a new project and give the project name, file location, video format, etc, or select an existing project that you want to alter.
2. **Capture:** Start new video recordings. You can also select the Trust 500N SPYC@M and alter the video and audio settings. The video image from your connected camera will now be visible in the main window. Click on 'Video menu' and select 'Video Properties'. If desired, you can alter the same audio and video settings here (see figure 10). Click on the 'Capture Video' button to start recording and click on it again to stop recording. Select 'Capture Audio' if you also wish to record sound with the video.

**Note:** *The sound cannot be heard whilst recording after selecting 'Capture Audio', but it can be heard when playing the video.*

**Note:** *To record audio, you must have a sound card installed to which you can connect a microphone.*

3. **Storyboard:** Add existing video clips to the project. Change the order of the video clips and trim the video clips so that you only have the video fragments that you require.
4. **Effects:** Add various transition effects between the video clips. You can choose from a hundred different effects.
5. **Title:** Add a title to the video. You can alter the text colour, letter font, size, etc, and also select various text effects, such as text which scrolls from the bottom to the top.
6. **Voice:** Add new sound recordings to the video project or select existing sound fragments from the menu.
7. **Music:** Add background music to the video project directly from your music CD or from saved music files (also MP3 support).
8. **Finish:** Save your video project in Ulead VSP format. Click on the 'Make movie' button to make the final video and export it to the desired video format. You can choose from the following video formats:
  - Microsoft AVI (\*.avi)
  - Advanced Streaming Format (\*.asf)
  - Autodesk Animation Files (\*.flc)
  - Autodesk Animation Files (\*.fli)
  - Autodesk 16-bit Animation Files (\*.flx)
  - QuickTime Movie Files (\*.mov, \*.qt)
  - MPEG Files (\*.mpg)
  - RealNetworks RealVideo Files (\*.rm)
  - Ulead Image Sequence Files (\*.uis)
9. If desired, you can click on the 'Make Sound' button to record the sound separately as a Microsoft Wave (.wav) file or an MPEG Audio File (.mpa).

**Note:** *For more information, see the extensive Help function in Ulead Video Studio 4.0 and the instruction manual. You can easily access this via the Trust Software Installer menu on the installation CD-ROM. The*

*Trust Software Installer starts automatically when the CD-ROM is inserted into your CD-ROM drive (see figure 3). Click on the "VIDEOSTUDIO MANUAL" button to open the manual directly from the CD-ROM. The instruction manual is available in English, German, Spanish, French and Italian.*

## 8.5 VideoLive Mail

This chapter explains the most commonly used components of VideoLive Mail. For more information, refer to the Help function of VideoLive Mail.

### 8.5.1 Once-only settings

When you start the VideoLive Mail program for the first time, a Set-up Wizard will appear to configure the program. It is recommended to complete this Wizard. During the Wizard, you will be asked:

- Your name; fill in your own name.
- Your e-mail address; fill in your e-mail address.
- Your mail server; fill in your 'Mailhost' or 'smtp server' provided by your Internet Service Provider.
- Your account name; fill in the user name given to you by your Internet Service Provider.

**Note:** *You should have your Internet Service Provider's information available when setting up your mail server.*

1. Click on 'Yes' to continue.
2. Click on 'Next' to continue. Figure 4 will appear.
3. Fill in your first name, last name and e-mail address and then click on 'Next'.
4. Select 'Built-in Mail Utility' and fill in your 'Mail Server' information (given to you by your ISP) and your 'account name'. Click on 'Next' to continue.
5. Select 'Trust 500N SPYC@M Video Capture' as the 'Video capture device' and select the desired frames per second (fps). Click on 'Test It?' to compare the image. Click on the square stop button to stop the test.
6. Click on 'Set-up' if you wish to alter the camera settings. Select 'Format' to set your camera's image format. Select 'Source' from the menu if you wish to alter the settings. Here, it is also possible to set the electric mains frequency. This is 220V/50 Hz for Europe.
7. Click on 'Next' after you have adjusted all the settings as required.
8. Click on 'Next' to configure the audio settings. The 'Audio Configuration' window will appear.
9. Click on 'Press Here to Test Speaker' to test the output volume of your speakers. Move the slide bar to adjust the volume.
10. Click on 'Next' once the settings are correct and you wish to continue with the configuration.
11. Click on the red button to make a recording. Click on the black square to stop the recording. Click on the black triangle to listen to the recording. The recording level can be altered using the slide bar.
12. Click on 'Next' once the settings are correct and you wish to continue with the configuration.
13. Click on 'Finish' to complete the configuration of VideoLive Mail.
14. You have now completed setting up VideoLive Mail. You can now use the program. If you wish to change the settings, you can do so using the 'Setup Wizard' ('Start - Programs - Cyberlink VideoMail 4.0').

**Note:** *You must have a sound card and a microphone installed to be able to use the audio settings.*



### 8.5.2 Recording and sending videos

Now you have completed the once-only settings in chapter 8.5.1 concerning your Internet Service provider. An explanation is given below of how you can easily record a short film and send it immediately via e-mail.

1. Click on 'Start – Programs – Cyberlink VideoLive Mail 4.0 – VideoLive Mail'.
2. Video Live Mail will start.
3. Click on the round 'Record' button to start recording.
4. Click on the square 'Stop' button when you wish to stop the recording.
5. Click on the 'E-mail' button to send the recording immediately.
6. The 'Summary' window will appear.
7. Here, you can include the desired information with your recording. Next, click on 'OK'.
8. The recording will now be automatically linked to your default e-mail program.
9. Send the e-mail as you would any other e-mail using this program.

### 8.5.3 Saving a video recording

1. Click on 'Start – Programs – Cyberlink VideoLive Mail 4.0 – VideoLive Mail'.
2. Click on the round 'Record' button to start recording.
3. Click on the square 'Stop' button when you wish to stop the recording.
4. Click on 'Save Video File'.
5. The 'Summary' window will appear.
6. Here, you can include the desired information with your recording. Next, click on 'OK'.
7. A standard Windows 'Save As' window will appear. In this window, you can indicate which folder you wish to save the video file in, you can give the file a name and indicate which format you wish to save the file in.

### 8.5.4 Opening a video recording

1. Click on 'Start – Programs – Cyberlink VideoLive Mail 4.0 – VideoLive Mail'.
2. Click on 'Open file' (F).
3. Select a video file from the location where you have saved the video files.

### 8.5.5 Taking a photograph

1. Click on 'Start – Programs – Cyberlink VideoLive Mail 4.0 – VideoLive Mail'.
  2. Click on 'Snap shot'.
  3. The photograph will be sent to your default editing program.
- You can save, open and edit the photograph via your editing program.


**Note:** *For more detailed information, see the Help function of VideoLive Mail. Click on 'Start – Programs – Cyberlink VideoMail Live 4.0 - VideoLive Mail help'. The help function is available in English, German, Spanish, French and Italian.*

## 8.6 COOL 360

For instructions on how to use COOL 360, please refer to the instruction manual included on the CD-ROM. The manual can be found at the following location:  
D:\Software\Cool360\Manual\C360.pdf  
Acrobat Reader has to be installed on your computer to be able to read this manual.

### 8.7 Using the camera as a webcam (NetMeeting)

1. Make sure you have an Internet account installed and your speakers and microphone are connected before starting NetMeeting.
2. Start NetMeeting (Start -> Programs -> Accessories -> Internet Tools -> NetMeeting).
3. Two windows will be opened, namely NetMeeting and your Dial-up connection.

4. Fill in your user name and password and click on 'Connect' to connect to the Internet.
5. Once a connection has been made with the Internet, only the NetMeeting window will remain visible. The Dial-up Connection window will disappear.
6. A number of settings should be made only once.  
Go to 'Tools -> Options...'. and click on the 'Video' tab.
7. To prevent a mirror image of your camera, do not select 'Show mirror image in preview video window'. Image settings, such as the image size and quality, can also be changed in this window. Click on 'OK' to save the new settings and return to the start window of NetMeeting. The once-only settings have now been completed.
8. Click on 'View' in the NetMeeting window and select the 'My Video (New Window)' option. An extra window ('My Video') will now be opened
9. Click on the 'Play' button (  ) to turn on your current video image. This image will also be seen by the person you make a NetMeeting connection with.
10. You are now ready to make a NetMeeting connection. Click on NetMeeting's telephone book icon. A new window will appear.
11. In the address bar, type an 'ils server name' (for example, ils.worldonline.nl) and click on 'Enter'.
12. Double-click on a person in the list. A NetMeeting connection will be made. The person may not wish to make a connection with you, because this person may be communicating with somebody else. If this is the case, select somebody else from the list.

You can find other 'ils servers' on the Internet. An example is:

<http://www.netmeetinghq.com>

For more information or solutions to problems, click on 'Help' in NetMeeting's start window. This contains a description of all the functions available with NetMeeting.

### 8.8 Webcam & Internet

The Trust 500N SPYC@M can also be used as a webcam, for example, on your Internet page.

A number of informative sites about webcams are given below:

<http://www.camarades.com>

<http://www.teveo.com>

At these sites, you can download software that you can use to send live video images over the Internet.

Please refer to the sites concerned for information on how to install and use the software.

## 9 Troubleshooting

<b>Method</b>		
<ol style="list-style-type: none"> <li>1. Read the solutions given below.</li> <li>2. Check for up-to-date FAQ's, drivers and instruction manuals on the Internet (<a href="http://www.trust.com/13143">www.trust.com/13143</a>).</li> </ol>		
<b>Problem</b>	<b>Cause</b>	<b>Possible solution</b>
<b>Windows does not detect a new device after connecting the camera.</b>	The computer's USB port does not work.	Check the settings of your USB port. See <a href="http://www.trust.com/customer-care/help/usb">www.trust.com/customer-care/help/usb</a>
	The camera is not connected to the USB port.	Connect the camera to a USB port

Problem	Cause	Possible solution
	The camera is connected to a USB hub which does not have a power supply.	Connect the camera to a USB hub which has a power supply or to a USB port on your computer.
<b>Error message 'Capture device was not detected' is displayed.</b>	The camera is not connected to the USB port.	Connect the camera to a USB port.
	The camera is connected to a USB hub which does not have a power supply.	Connect the camera to a USB hub which has a power supply or to a USB port on your computer.
<b>The TRUST 500N SPYC@M is marked with an exclamation mark '!' in the 'Device Manager'.</b>	The camera is connected to a USB hub which does not have a power supply.	Connect the camera to a USB hub which has a power supply or to a USB port on your computer.
	The camera has an IRQ conflict with a different device in your computer.	Make IRQ addresses free. Also see: <a href="http://www.trust.com/customer-care/help/general">www.trust.com/customer-care/help/general</a>
<b>The TRUST 500N SPYC@M does not work in combination with the TV/capture card.</b>	There is a conflict between the camera and the TV card.	Carry out the following: 1) Remove the TV Capture card. 2) Install the 500N SPYC@M. 3) Install the TV capture card.
<b>The camera does not do anything.</b>	The batteries have been inserted incorrectly.	Reinsert the batteries (see chapter 3).
	The camera is turned off or is in the sleep setting.	Turn the camera on or take it out of the sleep setting by pressing the 'Mode' button for a couple of seconds.
	The batteries are empty.	Replace the batteries (see chapter 3).
<b>The camera does not react, although the batteries are full.</b>	The camera must be reset.	Remove the USB cable and the batteries for at least 1 minute to reset the camera. Reinsert the batteries into the camera. The camera should now work.
<b>The camera suddenly turns itself off.</b>	NiCd batteries are used.	Use alkaline batteries (Duracell Ultra are recommended) or rechargeable NiMH batteries.
	The camera is in the 'Standby' setting.	Turn the camera back on by pressing the 'Mode' button for a couple of seconds.
	The power in the batteries is low.	Replace the batteries.
<b>The battery indicator on the display flashes.</b>	The batteries are empty.	Replace the batteries.

UK

Problem	Cause	Possible solution
<b>The recordings are not clear (hazy).</b>	The focus (distance to the object) is not correct.	Increase the distance to the object to be photographed.
		Set the camera's focus ring to the correct position (see chapter 5.1.1).
<b>No photograph is taken when the exposure button is pressed.</b>	The camera is still busy saving the previous photograph. The photograph counter flashes.	Wait until the photograph counter no longer flashes. The camera will then be ready.
<b>There is no connection with the computer.</b>	The camera has been connected incorrectly.	Reconnect the cables
	The camera is in the 'Standby' setting.	Turn the camera back on by pressing the mode button.
<b>The camera does not give an image in the application.</b>	Another application is open and is using the camera image.	Close the other application first before starting the test program.
<b>The image is distorted; there are waves through the image.</b>	The indoor lighting is affecting the recording.	Use the software to adjust the surrounding lighting to 220V/50 Hz (see chapter 8.1.4).
		Reduce the camera's number of frames per second (see chapter 8.1.4).



Problem	Cause	Possible solution
<b>A live recording gives a displaced image and the wrong colours.</b>	An old version of DirectX is installed.	Download the latest version of DirectX from <a href="http://www.microsoft.com">www.microsoft.com</a>
	For a too high VGA resolution (for example, 1600x1200), it is possible that there is insufficient memory for the video overlay.	Set your VGA card to a lower resolution and colour depth (for example, 800 x 600 / 16 bits colours). Updating your VGA driver may also solve the problem.
<b>There is interference in the photographs.</b>	The photographs are taken in dark surroundings.	Make sure there is enough light.
<b>Video recordings are lost when changing the batteries.</b>	Video recordings are saved in the SDRAM memory.	Connect the camera to your computer's USB port when changing the batteries.
<b>No more recordings are made.</b>	The camera's memory is full. The recording counter in the LCD screen flashes.	Load the recordings onto your computer and then delete them all from the camera's memory.
<b>The problem is not listed here.</b>	Check the Internet for the latest update of the camera Troubleshooter.	Go to <a href="http://www.trust.com/customer-care/help/camera">www.trust.com/customer-care/help/camera</a>

UK

If you still have problems after trying these solutions, please contact one of the Trust Customer Care Centers. You can find more information at the back of this instruction manual. Please have the following information available:

- The article number. This is 13143.
- A good description of what does not work.
- A good description of when the problem occurs.