

**Trust**

350FL MOUSE SECURITY SCAN OPTICAL



**User's manual**

U K

D E

F R

I T

E S

P L

N L

P T

G R

LIFE IS MORE! TRUST US

**TRUST.COM**

**Trust**

**350FL MOUSE SECURITY SCAN OPTICAL**

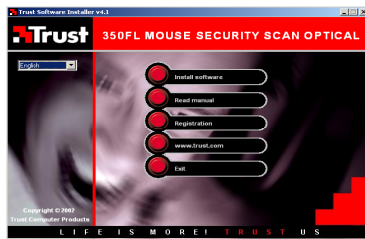


Fig. 1

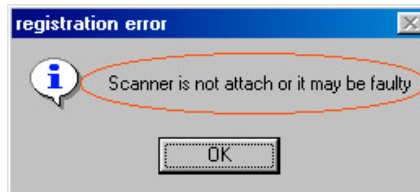


Fig. 2



Fig. 3

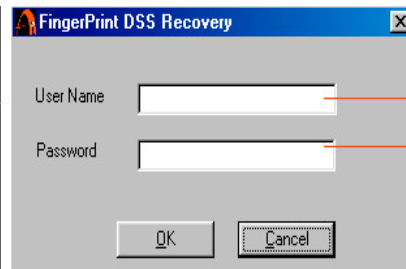


Fig. 4

**LIFE IS MORE! TRUST US**

**TRUST.COM**



Fig. 5

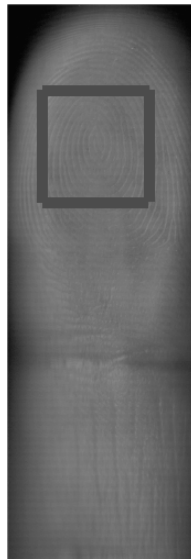


Fig. 6

U K

D E

F R

I T

E S

P L

N L

P T

G R





Thank you for your purchase. Register your product via our Internet site at [www.trust.com/register](http://www.trust.com/register), so that you will be eligible for optimal guarantee and service support. You will also be automatically informed of the development of your and other Trust products.

UK

Vielen Dank, dass Sie unser Produkt gekauft haben. Registrieren Sie jetzt ihr Produkt auf unserer Website, [www.trust.com/register](http://www.trust.com/register), so dass Sie unsere optimale Garantie- und Serviceunterstützung in Anspruch nehmen können. Außerdem werden Sie automatisch über die Entwicklung Ihres und anderer Produkte auf dem Laufenden gehalten.

DE

Nous vous remercions de votre achat. Enregistrez-le maintenant sur notre site Internet, [www.trust.com/register](http://www.trust.com/register), et vous aurez droit à une garantie et un soutien de service optimaux. En outre, vous serez informé automatiquement des mises à jour de votre produit et des autres produits de Trust.

FR

Grazie per aver acquistato un prodotto Trust. Registri l'acquisto effettuato presso il sito internet Trust ([www.trust.com/register](http://www.trust.com/register)), in questo modo potrà usufruire dell'assistenza e della garanzia. Inoltre potrà ottenere informazioni aggiornate sulle novità riguardanti il suo prodotto ed anche gli altri prodotti Trust.

IT

Muchas gracias por su adquisición. Registre ahora su adquisición a través de nuestro sitio en Internet, [www.trust.com/register](http://www.trust.com/register), de modo que tenga derecho al soporte de garantía y de servicio óptimo. Se mantendrá, además, automáticamente al corriente de los desarrollos de su producto y de los demás productos de Trust.

P L

Serdecznie dziękujemy za zakup naszego produktu. Rejestrując już teraz swój zakup na stronie internetowej firmy Trust, [www.trust.com/register](http://www.trust.com/register), uzyskacie Państwo optymalne wsparcie gwarancyjne i serwisowe. Ponadto będziecie Państwo automatycznie informowani o wszelkich zmianach odnośnie tego i innych produktów firmy Trust.

N L

Hartelijk dank voor uw aankoop. Registreer nu uw aankoop via onze internet site, [www.trust.com/register](http://www.trust.com/register), zodat u in aanmerking komt voor optimale garantie- en service ondersteuning. Bovendien wordt u automatisch op de hoogte gehouden van de ontwikkeling van uw en andere Trust producten.

P T

G R

LIFE IS MORE! TRUST US TRUST.COM



## CUSTOMER CARE CENTERS

24 HOURS free service: <a href="http://www.trust.com">www.trust.com</a>		
<b>Residents in the UK and Ireland should contact:</b>		
Mon - Fri From 8:00 - 16:00	<b>UK Office</b> Phone Fax	+44-(0)0845-6090036 +31-(0)78-6543299
<b>I residenti in Italia possono contattare:</b>		
lun - ven 9:00 - 13:00 / 14:00 -18:00	<b>Ufficio italiano</b> Telefono Fax	+39-051-6635947 +39-051-6635843
<b>Les habitants de la France et de l'Afrique du Nord peuvent contacter :</b>		
Lundi-vendredi De 9:00 à 17:00	<b>Bureau français</b> Téléphone Fax	+33-(0)825-083080 +31-(0)78-6543299
<b>Kontaktadresse für Einwohner Deutschlands:</b>		
Mo - Fr 9:00 - 17:00	<b>Deutsche Geschäftsstelle</b> Telefon Fax	0800-00TRUST (0800-0087878) +31-(0)78-6543299
<b>Los habitantes de España pueden ponerse en contacto con:</b>		
lun - viernes De las 9:00 a las 17:00 horas	<b>Oficina española</b> Teléfono Fax	+34-(0)902-160937 +31-(0)78-6543299
<b>Osoby mieszkające na terytorium Polski powinny skontaktować się:</b>		
Od pon. do pt. w godz 09:00-17:00	<b>Biuro w Polsce</b> Tel Fax	+48-(0)22-8739812 +31-(0)78-6543299
<b>Inwoners van Nederland kunnen contact opnemen met:</b>		
ma - vr 9:00 - 17:00 uur	<b>Kantoor Nederland</b> Telefoon Fax	0800-BELTRUST (0800-23587878) +31-(0)78-6543299
<b>All other countries / Alle anderen Länder / Tous les autres pays Tutti gli altri paesi / Todos los demás países / Alle andere landen</b>		
Mon - Fri From 9:00 - 17:00	<b>European Head Office</b> Phone Fax	+31-(0)78-6549999 +31-(0)78-6543299

LIFE IS MORE! TRUST US **TRUST.COM**



## 1 Introduction

This instruction manual is for users of the '350FL MOUSE SECURITY SCAN OPTICAL'. Please consult one of the Trust Customer Care Centers if you have any problems. You can find more information at the back of this instruction manual.

- The 350FL MOUSE SECURITY SCAN OPTICAL is to be used to protect your system. Persons without the proper rights will not be able to get access to it.
- Protect files from being read by others through usage of encryption.
- Keep track of different items by reviewing logs.
- A convenient cradle is supplied to store the mouse on.

This instruction manual gives an explanation of how to install/use the device and how to solve any problems during the installation or usage. Please read the full manual, which has been placed inside the software.

## 2 Safety

Carefully read the following instructions before use:

- The '350FL MOUSE SECURITY SCAN OPTICAL' does not require any special maintenance. Use a slightly damp, soft cloth to clean the set.
- Do not use aggressive substances, such as petrol or white spirit, to clean the device. These may harm the material.
- Do not submerge the device in any liquid. This may be dangerous and will damage the device. Do not use this device near water.
- Make sure nothing is placed on the cable. Do not use this device in an area where the cable can become worn or damaged as a result of people walking over it.
- Do not repair this device yourself.

## 3 Security issues

This product is intended as a simple security enhancement for your computer system. It uses the windows logon and adds biometric data to it. Because of security reasons, files can't be opened on other computers than the originating one. Therefore it is not advisable to encrypt any files without making encryptionless backups. This in case of system failure and encrypted files can not be opened on another system. Trust Computer Products will take no responsibility for loss of data or inaccessibility of files.

## 4 Connecting / Installing

1. De-install the old mouse software if any is installed. Keep the old mouse connected to make the installation easier. If you do not have another mouse connected you might get the error "there is no mouse or a PS/2 mouse connected" then click ok and continue using the keyboard.
2. Insert the black USB connector of the new mouse into the USB port.
3. The computer will find new hardware (USB Camera and Human Interface Device) and install it.

4. If you do not have another mouse connected too you will need to use the keyboard to go to the right directory. Use the TAB key to jump to another field, the ARROW KEYS to move up and down and ENTER to confirm the selection.
5. You will be asked to give the location of the driver. Press "specify the location" to install the driver. Go to the CD-ROM drive and select the directory <driver>.
6. Then go to the directory <win98\_me> for Win98/ME or to the directory <win2000\_XP> for Windows 2000 or XP.
7. Click "ok" to install the drivers. The Windows CD-ROM might be needed if certain files have not been installed. Windows might ask for it, insert the CD-ROM and point to the right directory.
8. New hardware is installed and ready to use, now continue with software installation.

## 5 Installing the software

1. Installation will take about 15 minutes to complete
2. Click on the button "install software" as seen in fig.1.
3. Select the language which will be used during the installation.
4. Press on "accept" to continue the installation after which you need to fill in the serial no. (Is noted on the sleeve of the CD-ROM)
5. The software needs to restart the PC to complete the installation, press "yes" to restart.
6. After having restarted the PC you will see a login screen with user and password where you are required to fill the following text in.
7. **The only thing you can fill inside user is "superroot" and as password "FPID" (remember that FPID must be with capital letters or else it will not work) If you can't type the text click on the dialog box itself to make it active.**
8. Now you are inside the normal windows desktop.

## 6 Software

The Trust DSS fingerprint software has been developed by Aimgene. For your convenience we have placed an extensive manual inside the software about the software and finger print chipset. Here is a brief explanation how to find the data inside the software's manual. Please read it completely to fully understand the way the mouse and the software work together with Windows. Start help by going to fig. 5 in the taskbar, right click on it and select help.

### 6.1 User accounts

See the manual part called **user management**. Here you will see how to add, remove or modify users/administrators.

**Note:** *For registering your fingerprint you need the part of your finger which is located inside the square as shown in Fig. 6*





## 6.2 Secured screensaver

See the manual part called **screensaver**. Here you will read how to set your computer to use the screensaver with password and/or fingerprint so no unauthorised user can access the system.

## 6.3 Using encryption/decryption

See the manual part called **file encryption/decryption**. Here you can read how to use the encryption techniques to protect your files from being read/used by persons other than yourself and administrators.

## 6.4 What to do when fingerprint sensor is defective ?

See the manual part called **using emergency rescue solution**. Here you will find what to do when the mouse or sensor should be defective and can not access the system. Here is a copy of it in case you can not access the computer anymore.

The FP-DSS provides users an emergency rescue solution to temporarily bypass any unpredictable fingerprint biometric hardware related issues. Such as: forget to bring the fingerprint reader or hardware failure...etc.

To access the system, follow the steps below.

See fig. 2

When the screen shows the dialog boxes as below, it means a fingerprint reader failure. Please refer to the instruction as below.

See fig. 3

When this dialog box appears, you can press "Alt+Ctrl+Shift+R" at the same time to use the "Emergency Rescue Solution"

See fig. 4

Fill in you user ID in the User Name section

Fill in your recovery password in the Password section.

Now you will be able to access the system.

## 6.5 Uninstalling/reinstallation

See the manual part called **installing/reinstalling** to know how to uninstall the software. Also it gives information how to keep all the accounts previously made and use it in the new installation.

## 6.6 System tray

See the manual part called **sys tray** how to work with the system tray.

The system tray has an icon in the taskbar, which looks like fig.5.

## 6.7 Log files

See the manual part called **system logs** to understand the different log files.

There are five options in the log file screen.

Pressing on VL will display the log file of which user has (tried to) logged in.

Pressing on EL will display the log file of which files have been encrypted/decrypted.

## 350FL MOUSE SECURITY SCAN OPTICAL

Pressing on SL will display the log file of the secured screen saver and will show which user has (tried to) logged in.  
Pressing on CL will clear the log which is currently shown.  
Pressing on I/O will display the log file of logon and logoffs.  
Pressing on X will close the log file screen.

## 7 Optical technology

The mouse uses a technology in which a built in sensor takes numerous photos per second and compares them with the ones previously made.  
Since this is made using light, it is good to understand that the surface you use the mouse on is an important item. Transparent surfaces like glass and mirrors will not reflect the light of the mouse that much but let it go through. Also black or red surfaces might give a bit of a problem since it absorbs a part of the light the mouse emits. The best surface to use the mouse on will be a flat white surface, however this does not mean that on other surfaces it will not work completely, the mouse could react a bit slower than on a white flat surface.

## 8 Troubleshooting

Also please read the Questions and Answers section in the software manual.

Problem	Cause	Possible solution
<b>The software gives an error called "install driver first".</b>	Mouse sensor drivers not yet installed.	Install the driver first then install the fingerprint software.
<b>Windows start with an error "no mouse or PS/2 mouse attached, click ok to continue".</b>	No serial or PS/2 mouse attached. USB mouse not installed yet.	Click ok and wait until installation of USB mouse is finished.
<b>Enrolment of my fingerprint does not work.</b>	Fingers to wet.	Clean the fingertips with a dry cloth and retry enrolment.
	Fingers to dry.	Apply a moisturizing cream to the finger and retry enrolment.
	During enrolment there is too little pressure to enrol the fingerprint.	Press harder on the sensor to get a clearer image and retry enrolment.
	During enrolment there is too much pressure to enrol the fingerprint.	Put less pressure on the sensor to get a clearer image and retry enrolment.

350FL MOUSE SECURITY SCAN OPTICAL

Problem	Cause	Possible solution
	The finger has moved too much during enrolment.	Retry enrolment and try to place the finger on the same location each time you register the finger.
	Using the wrong area of the finger.	Use the center part area of the fingertip for registering.
<b>My desktop has changed or item/icons are missing.</b>	You have logged in with a different user account.	Login with the right account.



Check the FAQ's on the Internet ([www.trust.com](http://www.trust.com)). You can also register your product at [www.trust.com](http://www.trust.com), so that you can receive optimal guarantee and service support. You will be automatically informed of developments to your product and other Trust products. You will also have the chance of winning some spectacular prizes.

If you still have problems after trying these solutions, please contact one of the Trust Customer Care Centers. You can find more information at the back of this instruction manual. Please have the following information available:

- The item number. This is 13092.
- Your hardware information.
- A good description of what does not work.
- A good description of when the problem occurs.

**Trust**



**DECLARATION OF CONFORMITY**

We, the manufacturer / importer  
Trust Products  
Daltonstraat 65  
3316 GD Dordrecht  
The Netherlands

Declare that the product  
Kind of product : Mouse  
Type designation : 350FL MOUSE SECURITY SCAN OPTICAL

Is herewith confirmed to comply with the requirements set in the Council Directive on the  
Approximation of the Laws of the Member States relating to  
Electro Magnetic Compatibility Directive (89/336/EC)

Manufacturer/Authorised representative

A handwritten signature in black ink, appearing to read 'E.M.J. van Zomeren', is placed above the printed name of the manufacturer's representative.

Trust Computer Products  
Ing. E.M.J. van Zomeren

Dordrecht, 8-10-02

**LIFE IS MORE! TRUST US TRUST.COM**