

**Trust**

**3 PORT USB 2.0 CARDBUS**

**UK**

User's manual



V2.0

L I F E I S M O R E I T R U S T U S

**TRUST.COM**



## 3 PORT USB 2.0 CARDBUS

Thank you for your purchase. Register your product via our Internet site at [www.trust.com/register](http://www.trust.com/register), so that you will be eligible for optimal guarantee and service support. You will also be automatically informed of the development of your and other Trust products.

UK

L I F E I S M O R E I T R U S T U S

TRUST.COM



## 3 PORT USB 2.0 CARDBUS

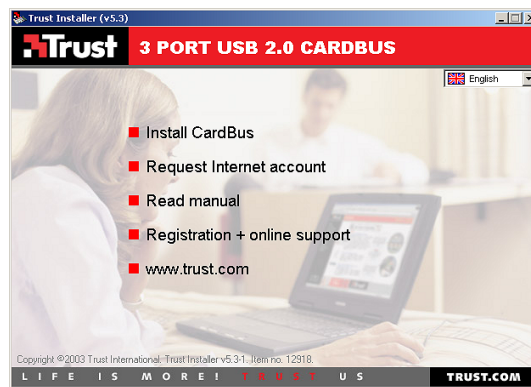


Fig. 1



Fig. 2

<b>Instructions when using for the first time</b>		<b>Chapter</b>	<b>!</b>
1.	Installation in Windows	(4.1)	
2.	Installation in Mac OS 9.x / 10.x	(4.3)	
3.	Checking after the installation	(5)	
4.	USB information	(6)	



## 1 Introduction

This instruction manual is for users of the TRUST 3 PORT USB 2.0 CARDBUS. The TRUST USB 2.0 Cardbus allows you to connect USB devices, such as a USB webcam, USB scanner, etc., to your computer. Systems with a USB 2.0 connection achieve a maximum data transfer speed of 480 Mbps.

## 2 Safety

Carefully read the following instructions before use.

- The Trust 3 PORT USB 2.0 CARDBUS does not require any special maintenance. Use a slightly damp, soft cloth to clean the casing.
- Do not use aggressive substances, such as white spirit, to clean the device. These may harm the material.
- Do not submerge the device in liquid. This may be dangerous and will damage the device. Do not use this device near water.
- Do not repair this device yourself.

## 3 Approval



This device meets the essential requirements and other relevant conditions of the applicable European directives. The Declaration of Conformity (DoC) is available at [www.trust.com/12918/ce](http://www.trust.com/12918/ce).

## 4 Installation

### 4.1 Installing the Cardbus in Windows 98 SE / Windows

#### ME / Windows 2000 / Windows XP

**Note:** Install the drivers before connecting your USB 2.0 Cardbus.

**Note:** Have your Windows CD-ROM available whilst installing the hardware.

**Note:** The Trust 3 Port USB 2.0 Cardbus only works in Windows 98 SE and later versions of Windows.

**Note:** Make sure all other programs (except Windows) are closed during the installation.

Follow the instructions below to install the Trust 3 Port USB 2.0 Cardbus.

1. Start Windows.
2. Insert the CD-ROM into your CD-ROM drive. The Trust Software Installer window will appear (see figure 1).
3. Click on 'Install CardBus' to start the installation.
4. Follow the on-screen instructions.

## TRUST 3 PORT USB 2.0 CARDBUS

---

5. After the installation, you will be asked whether you wish to restart your computer. Select 'Yes, I want to restart my computer now' and click on 'Close'.

### 4.2 Connecting the USB 2.0 Cardbus to the PCMCIA slot

**Note:** *The 3 Port USB 2.0 Cardbus is 'hot-swappable'. This means that you can connect and remove the Cardbus whilst your computer is turned on.*

The USB 2.0 Cardbus can be connected to a PCMCIA slot on your computer after installing the driver. Follow the instructions given below to do this.

1. Start Windows.
2. Insert the Cardbus into a free PCMCIA slot on your computer (see figure 2).
3. The new hardware will be detected by Windows and the driver for the USB 2.0 Cardbus will be automatically installed.

**Note:** *When installing the Cardbus in Windows 2000 and Windows XP, a message will be displayed stating that the driver's digital signature cannot be found. As a result of the fast development of computer technology, it is not always possible to have the latest drivers signed in time. Click on 'Yes' or 'Continue Anyway' to accept the driver and continue with the installation.*

### 4.3 Installing the Cardbus in MAC OS 9.x / 10.x

**Note:** *Install the drivers before connecting your USB 2.0 Cardbus.*

**Note:** *The 3 Port USB 2.0 Cardbus only works with Mac OS 9.x and Mac OS 10.x.*

**Note:** *Make sure all other programs (except MAC OS) are closed during the installation.*

#### 4.3.1 Installation in Mac OS9.x

A driver does not have to be installed for Mac OS 9.x.  
Insert the 3 PORT USB CARDBUS into a free PCMCIA slot. It will be detected automatically by the operating system.  
A USB icon will now appear on your desktop

#### 4.3.2 Installation in Mac OS10.x

1. Start Mac OS 10.x.
2. Insert the CD-ROM into your CD-ROM drive. A CD-ROM icon entitled 'Tr12918\_v2' will appear on the desktop.
3. Double-click on the CD-ROM icon.
4. Double-click on the 'Mac' folder. The USB2EHCI\_V107IMG.BIN file is located in this folder.
5. Drag this file to the desktop and double-click on it. A file entitled 'USB2HCI\_v107' will appear on the desktop.
6. Double-click on the 'USB2EHCI\_v107' file to start the installation.
7. Select the location (volume) where the driver must be installed and click on 'Proceed'.
8. Click on 'Install' to start the installation.
9. Once the installation has been completed, a window will appear stating that the installation has been successful.
10. Insert the 'TRUST 3 PORT USB2.0 CARDBUS' into a free PCMCIA slot.



## 5 Checking after the installation

### 5.1 Windows (98 SE / ME / 2000 / XP)

After installing the Trust 3 Port USB 2.0 Cardbus in Windows, the following are installed on your computer and can be checked.  
Start – Settings – Control Panel. Double-click on the 'System' icon and select the 'Device Manager' tab.

- USB Controllers – NEC PCI to USB Enhanced Host Controller
- USB Controllers – NEC PCI to USB Open Host Controller
- USB Controllers – NEC PCI to USB Open Host Controller
- USB Controllers – USB 2.0 Root Hub Device

**Note:** *The information given above may differ depending on the USB device and the operating system.*

**Note:** *The location or name may vary in the 'Control Panel' for different operating systems.*

**Note:** *The LED on the USB 2.0 Cardbus will light up if the Cardbus has been inserted into the PCMCIA slot correctly.*

### 5.2 Mac OS 9.x

After installing the Trust 3 Port USB 2.0 Cardbus in Mac OS 9.x, the following are installed on your computer and can be checked.

1. Click on the Apple icon in the top left-hand corner of the window.
2. Select 'Apple System Profile'.
3. Click on the 'Device Volumes' tab.
4. The USB device will be located here. Click on the arrow next to the device to view more information about the USB device.

## 6 USB information

If you use one of the USB 2.0 Cardbus ports with a USB 1.1 device, then the speed of the other two ports will be automatically set to the speed of a USB 1.1 port.

Please note that the power available for a USB device is limited when using your cardbus slot. For example, it is possible that when using a USB scanner (requires a lot of power) together with another USB device, one or both devices may no longer function correctly. In this case, only one device must be used at a time.

When this happens, the LED on your USB 2.0 Cardbus will no longer light up or will not be as brightly lit.

## 7 Troubleshooting

Method
1. Read the solutions given below. 2. Check for up-to-date FAQ's, drivers and instruction manuals on the Internet ( <a href="http://www.trust.com/12918">www.trust.com/12918</a> ).



Problem	Cause	Possible solution
<b>The Cardbus is not detected.</b>	The card has not been inserted correctly.	Insert the Cardbus firmly into the PCMCIA slot.
<b>The Cardbus has not been installed correctly.</b>	The wrong version of Windows is used.	USB 2.0 is only fully supported in Windows 98 Second Edition and later versions. Upgrade your system.
	Windows 98, Windows ME, Windows 2000 and Windows XP do not support USB 2.0 by default.	Download the USB 2.0 update from <a href="http://www.windowsupdate.com">www.windowsupdate.com</a> .
	The wrong Mac OS is used.	The 3 Port USB 2.0 Cardbus only works with Mac OS 9.x and Mac OS 10.x.
	No driver has been installed in Mac OS 10.x.	Install the driver as described in chapter 4.3.2.
<b>The LED on the card does not light up.</b>	The card has not been inserted correctly.	Insert the Cardbus firmly into the PCMCIA slot.
	The driver has not been installed correctly.	Install the driver. See chapter 4.2 for Windows and chapter 4.3 for Mac OS systems).
<b>The connected USB device is not detected.</b>	The USB cable has not been connected correctly.	Connect the USB cable correctly
	The USB device has its own driver which has not been installed.	Install the driver provided with your USB device. Also see the instruction manual provided with the device.
<b>The USB 2.0 device does not work at the optimal speed.</b>	USB devices work at the optimal speed with a USB 2.0 cable.	Use a USB 2.0 cable.

For more information about USB, see [www.trust.com/customer-care/help/usb](http://www.trust.com/customer-care/help/usb).

If you still have problems after trying these solutions, please contact one of the Trust Customer Care Centers. You can find more information at the back of this instruction manual. Please have the following information available:

- The article number. This is 12918.
- A good description of what does not work.
- A good description of when the problem occurs.

## 8 Warranty conditions

- Our products have a two-year manufacturer's warranty which is effective from the date of purchase.
- If there is a fault, return the product to your dealer and include an explanation of the fault, the proof of purchase and all the accessories.
- During the warranty period, you will receive a similar model, if one is available. If no similar product is available, your product will be repaired.
- Please contact our help desk for missing components, such as the instruction manual, software or other components.
- The warranty becomes invalid if the product has been opened, if there is mechanical damage, if the product has been misused, if alterations have been made to the product, if the product has been repaired by a third party, in the case of negligence or if the product has been used for a purpose other than that originally intended.
- Excluded from the warranty:
  - Damage caused by accidents or disasters, such as fire, flood, earthquakes, war, vandalism or theft.
  - Incompatibility with other hardware/software which is not stated in the minimum system requirements.
  - Accessories, such as batteries, fuses (if applicable).
- Under no circumstances will the manufacturer be held responsible for any incidental or consequential damage, including the loss of income or other commercial losses resulting from the use of this product.

### Copyright disclaimer

Reproduction of this manual or any part of it is prohibited without permission from Trust International B.V.







## CUSTOMER CARE CENTERS

24 HOURS free service: <a href="http://www.trust.com">www.trust.com</a>	
<b>Residents in the UK and Ireland should contact:</b>	
Mon - Fri From 8:00 - 16:00	<b>UK Office</b> Phone +44-(0)845-6090036 Fax +31-(0)78-6543299
<b>I residenti in Italia possono contattare:</b>	
lun - ven 9:00 - 13:00 / 14:00 - 18:00	<b>Ufficio italiano</b> Telefono +39-051-6635947 Fax +39-051-6635843
<b>Les habitants de la France et de l'Afrique du Nord peuvent contacter :</b>	
Lundi-vendredi De 9:00 à 17:00	<b>Bureau français</b> Téléphone +33-(0)825-083080 Fax +31-(0)78-6543299
<b>Kontaktadresse für Einwohner Deutschlands:</b>	
Mo - Fr 9:00 - 17:00	<b>Deutsche Geschäftsstelle</b> Telefon 0800-00TRUST (0800-0087878) Fax +31-(0)78-6543299
<b>Los habitantes de España pueden ponerse en contacto con:</b>	
lun - viernes De las 9:00 a las 17:00 horas	<b>Oficina española</b> Teléfono +34-(0)902-160937 Fax +31-(0)78-6543299
<b>Osoby mieszkające na terytorium Polski powinny skontaktować się:</b>	
Od pon. do pt. w godz 09:00-17:00	<b>Biuro w Polska</b> Tel +48-(0)22-8739812 Fax +31-(0)78-6543299
<b>Inwoners van Nederland kunnen contact opnemen met:</b>	
ma - vr 9:00 - 17:00 uur	<b>Kantoor Nederland</b> Via vaste telefoon 0800-BELTRUST (0800-23587878) Via mobiele telefoon +31 (0)78-6543387 Fax +31-(0)78-6543299
<b>All other countries / Alle anderen Länder / Tous les autres pays Tutti gli altri paesi / Todos los demás países / Alle andere landen</b>	
Mon - Fri From 9:00 - 17:00	<b>European Head Office</b> Phone +31-(0)78-6549999 Fax +31-(0)78-6543299

L I F E I S M O R E ! T R U S T U S

TRUST.COM