

UK

TRUST USB DATA LINK F12M

Instruction manual

Version 1.0

Thank you

Thank you very much for purchasing this product from the Trust range. We wish you hours of fun with it. Please read this manual carefully before using the product.

Registration

Register your purchase via our Internet site at www.trust.com so that you can receive optimal guarantee and service support. You will be automatically informed of developments to your product and other Trust products. You will also have the chance of winning some spectacular prizes.

Copyright statement

No part of this instruction manual may be reproduced or transmitted, in any form or by any means, electronic or mechanical, including photocopying, recording, or information storage and retrieval systems, for any purpose other than the purchaser's own personal use, without prior written permission from the manufacturer.

Disclaimer statement

The manufacturer specifically disclaims all warranties, either express or implied, including, but not limited to, implied warranties for the marketability and suitability for a particular purpose, with respect to the software, the accompanying product manual(s) and written material, and all other accompanying hardware. The manufacturer reserves the right to revise or make improvements to its product at any time and without obligation to notify any person of such revisions or improvements.

In no event shall the manufacturer be liable for any consequential or incidental damages, including any loss of business profits or any other commercial damages, arising out of the use of its products.

All company or product names are trademarks or registered trademarks of their respective owners.

Contents

1. Introduction	2
1.1 Conventions used in the manual.....	2
1.2 Contents of the box.....	2
1.3 Minimum system requirements	2
2. Safety.....	3
3. Functions	3
4. Installation	3
4.1 Uninstalling old drivers and devices.....	3
4.2 Installation	4
4.2.1 Windows 98.....	4
4.2.2 Windows ME	7
4.2.3 Windows 2000.....	10
4.2.4 Windows XP	11
4.2.5 Mac.....	14
4.3 Checking after the installation.....	14
5. Using PC-Linq.....	15
5.1 PC to PC	15
5.1.1 Power management and Remote Wake-up function	16
5.2 PC naar MAC.....	16
5.3 MAC to MAC.....	16
6. Troubleshooting.....	18
7. Specifications	19
8. Trust Customer Care Centers	20


 UK

1. Introduction

This instruction manual is for users of the TRUST USB DATA LINK F12M.

The TRUST USB DATA LINK F12M is a fast solution for exchanging data between two computers. The TRUST DATA LINK F12M is fully Plug & Play compatible and can exchange data faster than other similar products with a serial or parallel connection (approximately 12 Mbits/s).

The software program provided looks like Windows Explorer and makes exchanging files between two computers just as simple as transferring files, for example, to your hard drive. All you need to do is to install the program on both computers and connect the TRUST USB DATALINK F12M.

1.1 Conventions used in the manual

The following conventions have been used in the manual to indicate instructions:

<Key> Here you should press a key. The name of the key is given between brackets.

'System' This is a specific term used in a program. These are terms used by, for example, Microsoft Windows 98.

[DIR] Type the text shown between brackets [...].

Extra information will be shown as follows:

Note: *Install the device before installing the software.*

The examples assume that the letter "D" has been assigned to your CD-ROM drive. If your system uses a different letter for your CD-ROM drive, for example "E", you should replace "D" by "E".

1.2 Contents of the box

Check the contents of the box before reading the instruction manual. It should contain the following:

- USB DATA LINK cable
- Protective transport cover
- CD-ROM containing the driver and the software
- Multilanguage instruction manual

If anything is missing or damaged, please contact one of the Trust Customer Care Centers. You can find more information at the back of this instruction manual.

1.3 Minimum system requirements

- Pentium CPU
- Free USB port
- 16 MB RAM
- CD-ROM drive
- 4 MB free disk space
- Windows 98 / Windows 2000 / Windows ME / Windows XP or
- Macintosh system with Mac 8.6 or higher

Check www.trust.com/12823 for the latest operating system support.

2. Safety

Carefully read the following instructions before use:

- The TRUST USB DATA LINK F12M does not require any special maintenance. Use a slightly damp, clean cloth to clean the device.
- Do not use aggressive substances, such as petrol or white spirit, to clean the device. These may harm the material.
- Do not submerge the device in liquid. This will damage the device. Do not use this device near water.
- Make sure nothing is placed on the power cable. Do not use this device in an area where the cable can become worn or damaged as a result of people walking over it.
- Do not repair this device yourself. This device must only be repaired by qualified personnel.
- Under the following circumstances, have the device repaired by qualified personnel:
 - The cable or plug is damaged or worn.
 - The device has come into contact with rain, water or another liquid.

3. Functions

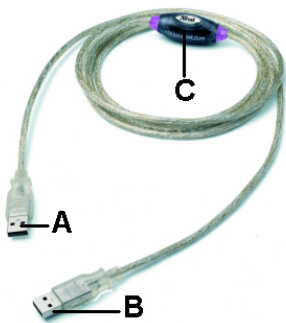


Figure 1: Functions

A	USB connection	Connection for system 1 (PC / MAC)
B	USB connection	Connection for system 2 (PC / MAC)
C	Controller unit	Control unit for communication between 2 computers.

Table 1: Functions

4. Installation

4.1 Uninstalling old drivers and devices

The most common cause of faults during installation is the presence of a driver for a similar, old product. The best solution is to first remove all drivers related to old devices before installing the new driver.

1. Enter the Windows 'Safe Mode' (press F8 when starting Windows and then select 'Safe Mode' from the menu which is displayed).
2. Go to 'Start – Settings – Control Panel' and double-click on the 'Add/Remove Programs' icon.
3. Find all the programs for similar, old devices and remove these by clicking on the 'Add/Remove' button. When in the 'Safe Mode', it is possible for some programs to appear twice. In that case, remove all the programs which appear twice.
4. Restart the computer.

4.2 Installation

Note: The latest drivers can be downloaded from www.trust.com/12823. Check whether a new driver is available and use this for the installation.

Note: Make sure all other programs are closed during the installation.

Note: During installation in Windows XP, you may receive a message saying that the driver has not been signed. This does not cause a problem for the functionality.

Note: In the examples, the CD-ROM drive is indicated by "D:\". This may be different for your computer.

4.2.1 Windows 98

1. Plug the USB Data Link F12M into a free USB port on your computer or into a USB hub which has already been connected to your computer.
2. Windows will detect new hardware. Figure 2 will appear.



Figure 2: Installing the driver

3. Click on 'Next' to continue with the installation. Figure 3 will appear.

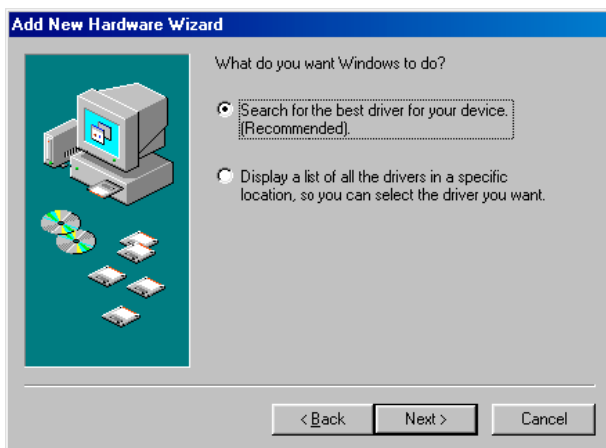


Figure 3: Installing the driver

4. Select 'Search for the best driver for your device (Recommended)' and then click on 'Next'. Figure 4 will appear.



Figure 4: Installing the driver

5. Type [D:\Driver\Win98] as the location of the driver and click on 'Next'. Figure 5 will appear.



Figure 5: Installing the driver

6. Click on 'Next' to start the installation. Figure 6 will appear after the installation.

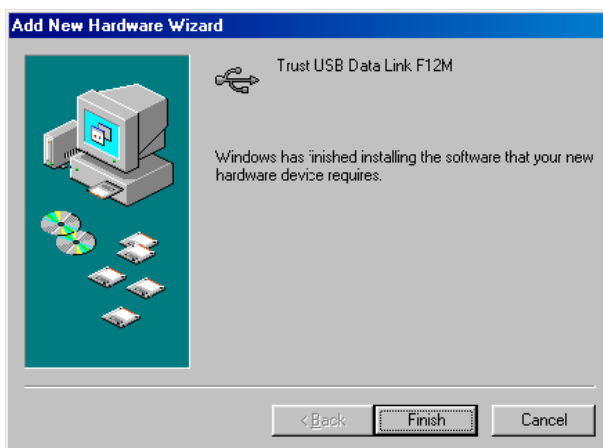


Figure 6: Installing the driver

7. Click on 'Finish' to complete the installation of the driver. The installation of the PC-Linq software program will now start automatically. Figure 7 will appear.

TRUST USB DATA LINK F12M

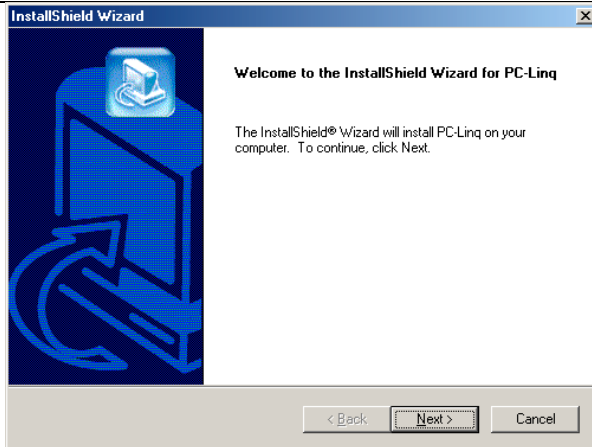


Figure 7: Installing PC-Linq

8. Click on 'Next' to continue. Figure 8 will appear.

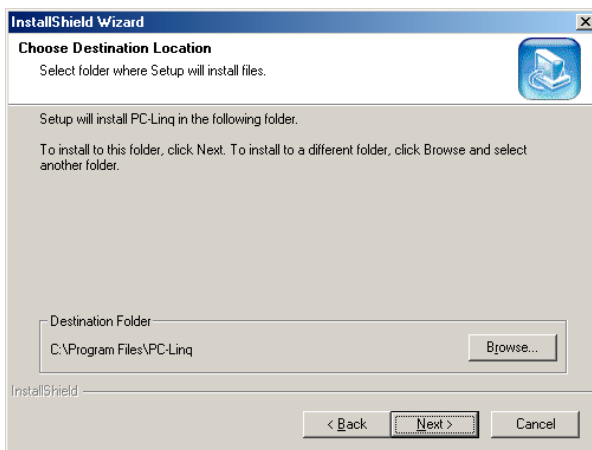


Figure 8: Installing PC-Linq

9. Click on 'Next'. Figure 9 will appear.

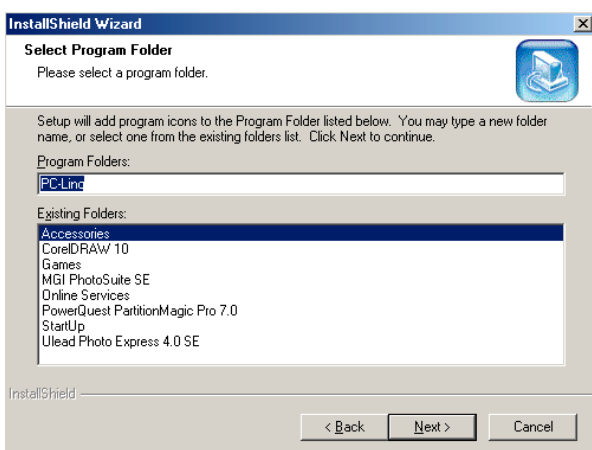


Figure 9: Installing PC-Linq

10. Click on 'Next'. PC-Linq will now be installed automatically.

You have now completed the installation of the driver. Repeat points 1 to 10 for the PC or notebook to which the TRUST USB DATA LINK F12M will be connected.

The PC-Linq program can also be installed manually. To do this, click on 'Start -> Run' and type [D:\Setup.exe] in the command line to start the Trust Software Installer.

Next, click on the PC-Linq button. The installation program will now start.

It is possible to connect two computers which use different versions of Windows. It is also possible to connect a Windows system with a MAC system.

In that case, go to the relevant chapter for instructions on how to install the driver.

Continue to chapter 4.3 for instructions on what to check after the installation.

4.2.2 Windows ME

1. Plug the USB Data Link F12M into a free USB port on your computer or into a USB hub which has already been connected to your computer.
2. Windows will detect new hardware. Figure 10 will appear.



Figure 10: Installing the driver in Windows ME

3. Select 'Specify the location of the driver (Advanced)' and then click on 'Next'. Figure 11 will appear.



Figure 11: Installing the driver in Windows ME

4. Select 'Specify a location' and type [D:\Driver\WinMe]. Click on 'Next' to continue. Figure 12 will appear.

TRUST USB DATA LINK F12M



Figure 12: Installing the driver in Windows ME

5. Click on 'Next' to continue. Figure 13 will appear.

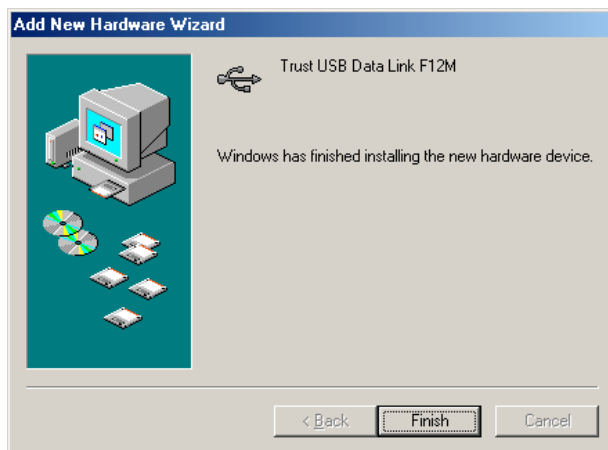


Figure 13: Installing the driver in Windows ME

6. Click on 'Finish' to complete the installation of the driver. The installation of the PC-Linq software program will now start automatically. Figure 14 will appear.

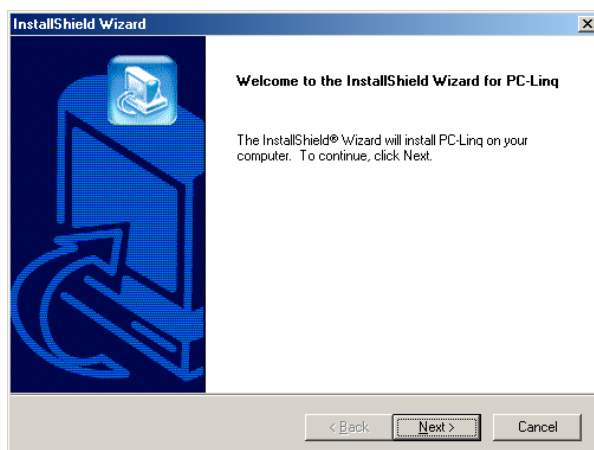


Figure 14: Installing PC-Linq

7. Click on 'Next' to continue. Figure 15 will appear.

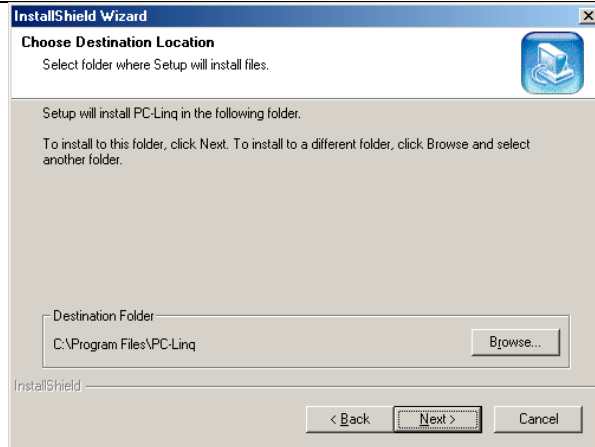


Figure 15: Installing PC-Linq

8. Click on 'Next'. Figure 16 will appear.

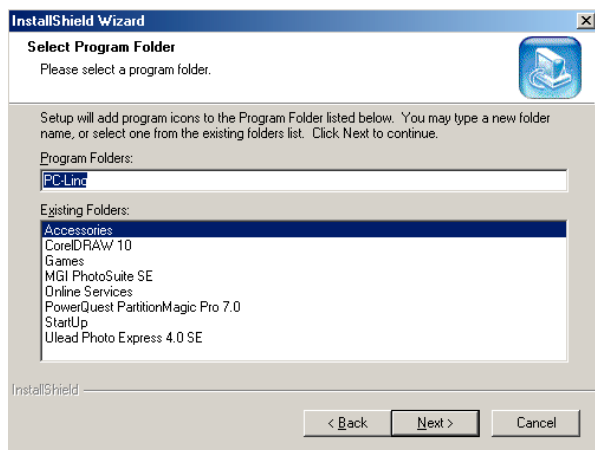


Figure 16: Installing PC-Linq

9. Click on 'Next' to start the installation.

PC-Linq will now be installed automatically.

You have now completed the installation of the driver. Repeat points 1 to 9 for the PC or notebook to which the TRUST USB DATA LINK F12M will be connected.

The PC-Linq program can also be installed manually. To do this, click on 'Start -> Run' and type [D:\Setup.exe] in the command line to start the Trust Software Installer.

Next, click on the PC-Linq button. The installation program will now start.

It is possible to connect two computers which use different versions of Windows. It is also possible to connect a Windows system with a MAC system.

In that case, go to the relevant chapter for instructions on how to install the driver.

Continue to chapter 4.3 for instructions on what to check after the installation.

4.2.3 Windows 2000

1. Plug the USB Data Link F12M into a free USB port on your computer or into a USB hub which has already been connected to your computer.
2. Windows will detect new hardware. Figure 17 will appear.

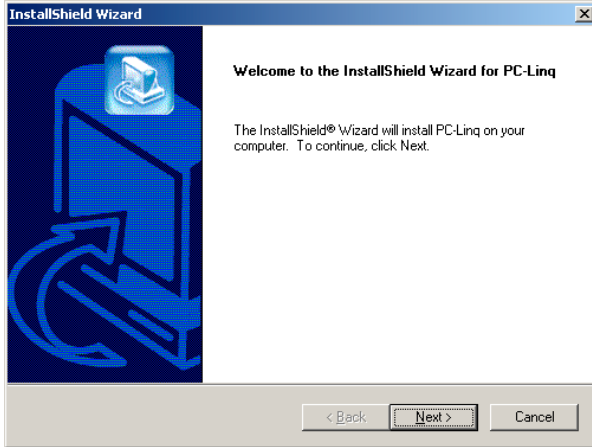


Figure 17: Installing the driver in Windows 2000

3. Click on 'Next' to continue with the installation. Figure 18 will appear.

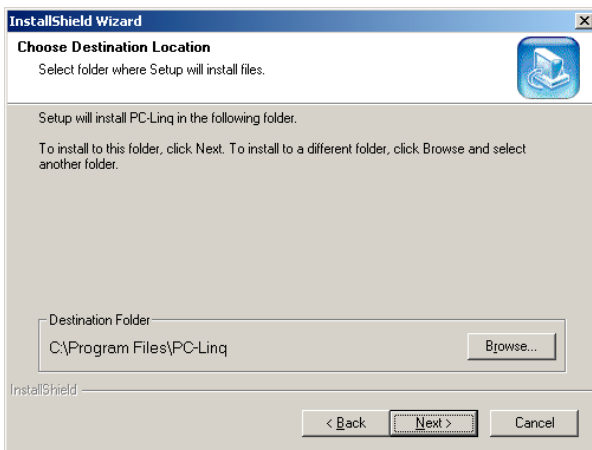


Figure 18: Installing the driver in Windows 2000

4. Click on 'Next' to continue with the installation. Figure 19 will appear.

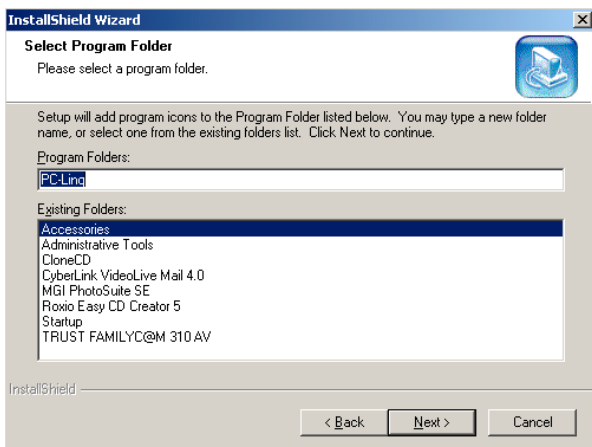


Figure 19: Installing the driver in Windows 2000

5. Click on 'Next' to start the installation.

PC-Linq will now be installed automatically.

You have now completed the installation of the driver. Repeat points 1 to 5 for the PC or notebook to which the TRUST USB DATA LINK F12M will be connected.

The PC-Linq program can also be installed manually. To do this, click on 'Start -> Run' and type [D:\Setup.exe] in the command line to start the Trust Software Installer.

Next, click on the PC-Linq button. The installation program will now start.

It is possible to connect two computers which use different versions of Windows. It is also possible to connect a Windows system with a MAC system.

In that case, go to the relevant chapter for instructions on how to install the driver.

Continue to chapter 4.3 for instructions on what to check after the installation.

4.2.4 Windows XP

1. Plug the USB Data Link F12M into a free USB port on your computer or into a USB hub which has already been connected to your computer.
2. Windows will detect new hardware. Figure 20 will appear.



Figure 20: Installing the driver in Windows XP

3. Click on 'Next' to continue with the installation. Figure 21 will appear.

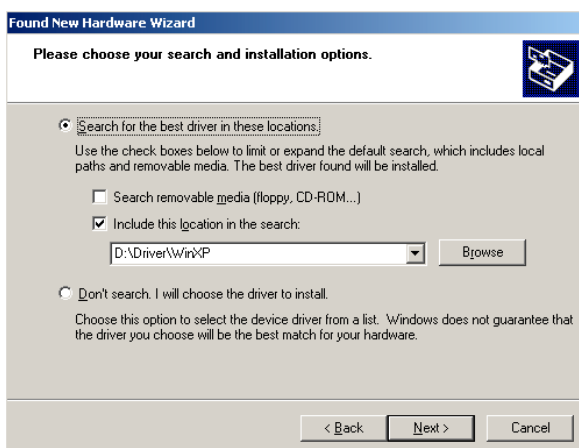


Figure 21: Installing the driver in Windows XP

4. Click on 'Next' to continue with the installation. Figure 22 will appear.

TRUST USB DATA LINK F12M

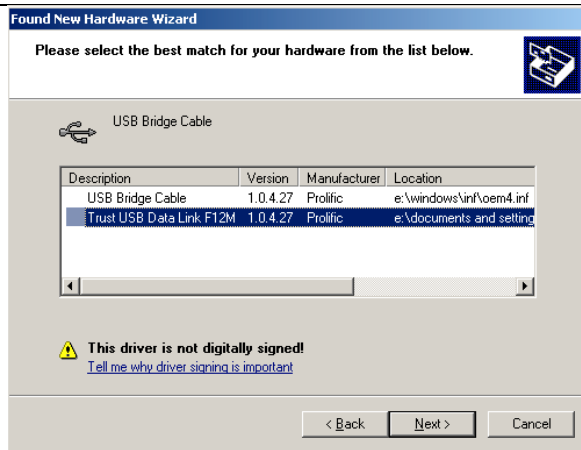


Figure 22: Installing the driver in Windows XP

5. Select 'Trust USB Data Link F12M' and click on 'Next' to start the installation. Figure 23 will appear.

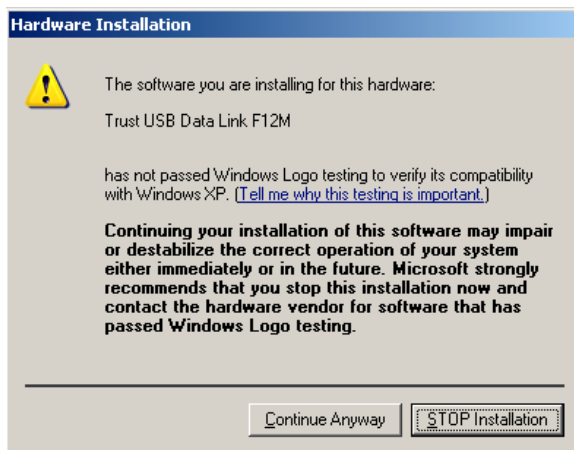


Figure 23: Installing the driver in Windows XP

6. This message says that the driver has not been verified. You can ignore this message, because it does not affect the functionality of the driver. Click on 'Continue Anyway' to continue with the installation. Figure 24 will appear.

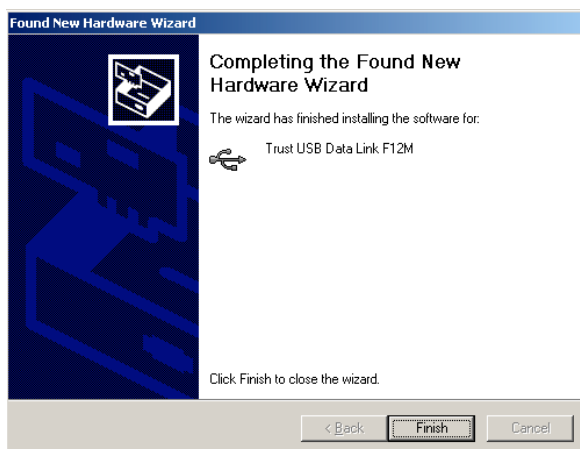


Figure 24: Installing the driver in Windows XP

10. Click on 'Finish' to complete the installation. The installation of the PC-Linq software program will now start automatically. Figure 25 will appear.

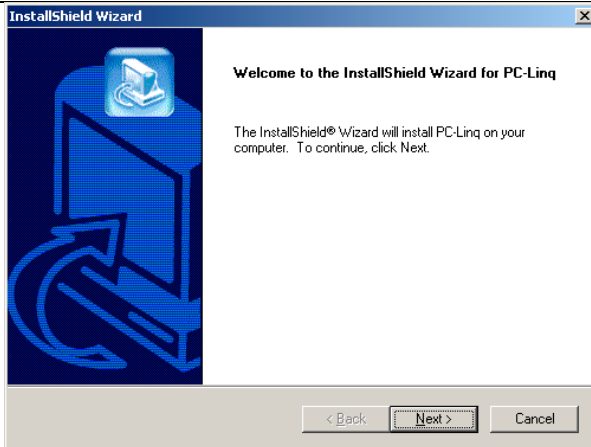


Figure 25: Installing PC-Linq

7. Click on 'Next' to continue. Figure 26 will appear.

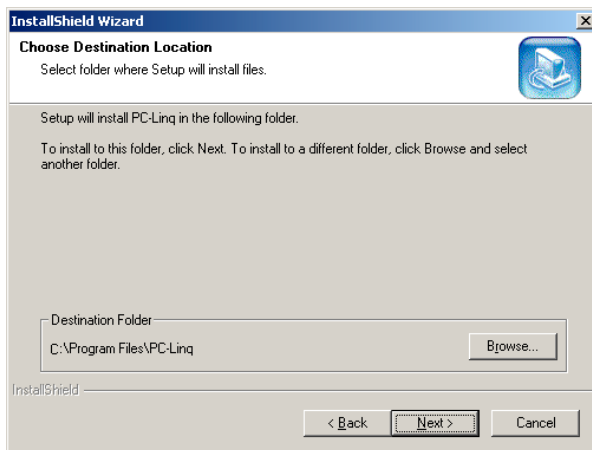


Figure 26: Installing PC-Linq

8. Click on 'Next' to continue. Figure 27 will appear.

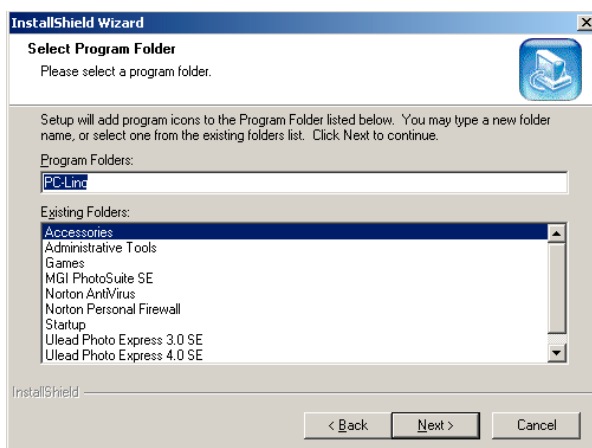


Figure 27: Installing PC-Linq

9. Click on 'Next' to start the installation.

PC-Linq will now be installed automatically.

You have now completed the installation of the driver. Repeat points 1 to 9 for the PC or notebook to which the TRUST USB DATA LINK F12M will be connected.

TRUST USB DATA LINK F12M

The PC-Linq program can also be installed manually. To do this, click on 'Start -> Run' and type [D:\Setup.exe] in the command line to start the Trust Software Installer.

Next, click on the PC-Linq button. The installation program will now start.

It is possible to connect two computers which use different versions of Windows. It is also possible to connect a Windows system with a MAC system.

In that case, go to the relevant chapter for instructions on how to install the driver.

Continue to chapter 4.3 for instructions on what to check after the installation.

4.2.5 Mac

1. Turn on your system and wait until it has fully started.
2. Insert the CD-ROM containing the drivers into your CD-ROM drive and wait until the CD-ROM icon with the name Tr12823 appears on your desktop.
3. Double-click on the CD-ROM icon to view the contents of the CD-ROM.
4. Double-click on the 'Mac' folder.
5. Double-click on the 'Mac USB Data Bridge installer' file to start the installation of the driver.
6. In the window that now appears, click on 'Install'. The installation will now start.
7. A new window will appear after the installation has been completed. Click on 'Quit' to finish the installation.
8. Connect one of the USB connections of the Trust USB Data Link F12M to a free USB port on your Mac system.
9. Connect the other USB connections of the Trust USB Data Link F12M to the other computer (MAC or PC).

Note: *Although it is possible to connect a MAC system to a PC, not all the programs which work on a MAC system work on a PC, or vice versa. It is, therefore, possible that a program works on one system but not on the other. This is not caused by the Trust USB Data Link F12M.*

The Trust USB Data Link F12M is ready for use. See chapter 5 for instructions on how to use PC-Linq.

4.3 Checking after the installation

After installing the device and the driver, the following are installed on your computer and can be checked:

- 1) 'Start – Settings – Control Panel'. Double-click on the 'System' icon and select the 'Device Manager' tab.
- Universal Serial Bus controllers – Trust USB Data Link F12M
- 2) A shortcut for PC-Linq has been made on the Windows desktop.
- 3) A shortcut has been made in the Windows Start menu (Start -> Programs -> PC Linq).

Note: *The information given above will vary when the installation has been altered by the user (for example, not everything has been installed or locations other than the default locations have been selected).*

Note: *Deviations may also occur as a result of using new drivers available on the Internet.*

Note: *The location or name may vary in the 'Control Panel' for different operating systems.*

The Trust USB Data Link F12M is ready for use. See chapter 5 for instructions on how to use PC-Linq.

5. Using PC-Linq

5.1 PC to PC

Note: Follow the instructions given below for both systems which are to be connected to each other.

Note: Make sure the device and drivers are installed on both systems before using PC-Linq.

Note: Communication will not take place between the computers if PC-Linq has not been started on both systems.

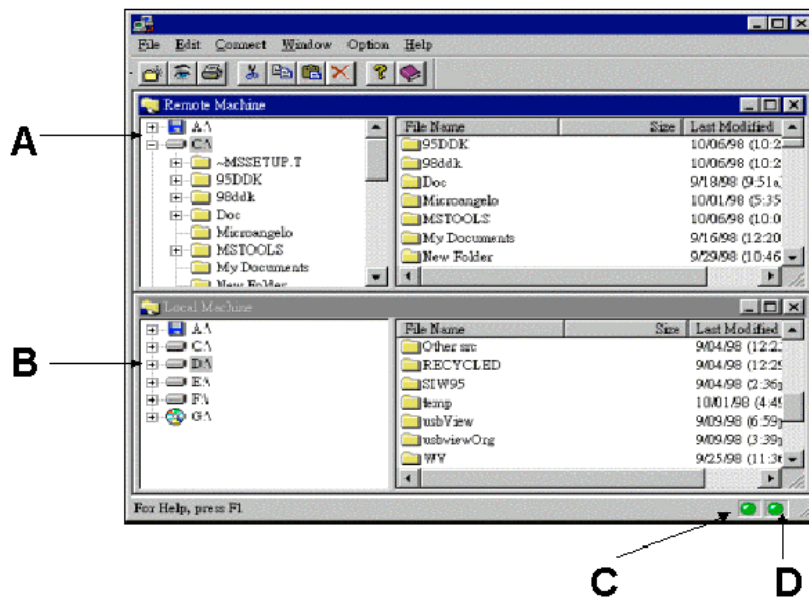


Figure 28: PC-Linq Manager

A	Remote machine.	Remote machine.
B	Local Machine	Local Machine.
C	Indicator	Indicator for local PC (B). Green: connection / Red: no connection.
D	Indicator	Indicator for remote PC (A). Green: connection / Red: no connection.

Table 2: PC-Linq Manager

1. Plug both ends of the Trust USB Data Link F12M cable into the USB ports on both computers.
2. Double-click on the PC-Linq shortcut on the desktop (do this on both systems).
3. The PC-Linq Manager (figure 28) will appear and identify both systems.
4. The PC-Linq Manager works in the same way as Windows Explorer. You can, therefore, cut and paste files and folders from one system to the other.

Two indicators are displayed in the bottom right-hand corner of the PC-Linq Manager. The left-hand indicator represents the local PC and the right-hand indicator represents the second PC.

Both indicators display the status of the connection between the systems. Green means that there is a connection and red means that there is no connection between the systems.

For a good connection between the two systems, both indicators should be green.

If one indicator is red, this means that the USB cable has not been connected correctly, the driver has not been installed correctly or the system concerned is in the 'Sleep' mode.

For more information concerning the use of PC-Linq, click on Help on the right-hand side of the program's menu bar.

5.1.1 Power management and Remote Wake-up function

The Trust USB Data Link F12M supports the USB power management function.

If one of the two PCs is in the 'Sleep' mode, the Trust USB Data Link F12M will need a minimum current of 500 µA to continue to function.

PC-Linq also supports the Remote Wake-up function. This means that if the second PC is in the 'Sleep' mode and you click on one of the files or folders in the other PC, the second PC will return to the normal mode.

You can turn off this option by selecting the 'Allow System to Suspend' option in the program's settings. (**Options -> Setting**).

5.2 PC to MAC

Note: *Not all files are suitable for exchanging between a PC and MAC system, because they are not always compatible with each other. This is because both types of system are written differently. A few examples of files which can be exchanged are .JPG, .TXT and .DOC.*

1. Plug one end of the Trust USB Data Link F12M cable into the USB port of your PC.
2. Plug the other end of the Trust USB Data Link F12M cable into the USB port of your MAC system.
3. Double-click on the PC-Linq shortcut on the desktop of your PC.
4. On the MAC system, open the folder in which you have installed the 'Mac USB DataBridge' program.
5. Next, click on the 'Mac USB DataBridge PPC' file to start the program.
6. The PC-Linq Manager (figure 28) will appear on the PC and identify both systems.
7. On the MAC system, a window will appear with the name 'Macintosh HD' and the two connection indicators.
8. Click on 'Connect -> Remote' to view the contents of the PC.
9. You will now be asked which PC station you wish to view. Make your selection and click on 'OK'.
10. The contents of the PC will now replace the contents of the MAC system.
11. The PC-Linq Manager works in the same way as Windows Explorer. You can, therefore, cut and paste files and folders from one system to the other.

Two indicators are displayed in the top left-hand corner of the PC-Linq Manager. The left-hand indicator represents the MAC system and the right-hand indicator represents the PC.

Both indicators display the status of the connection between the systems. Green means that there is a connection and red means that there is no connection between the systems.

For a good connection between the two systems, both indicators should be green.

If one indicator is red, this means that the USB cable has not been connected correctly, the driver has not been installed correctly or the system concerned is in the 'Sleep' mode.

For more information concerning the use of PC-Linq, click on Help on the right-hand side of the program's menu bar.

5.3 MAC to MAC

1. Plug one end of the Trust USB Data Link F12M cable into the USB port of the first MAC system.
2. Plug the other end of the Trust USB Data Link F12M cable into the USB port of the second MAC system.
3. On both MAC systems, open the folder in which you have installed the 'Mac USB DataBridge' program.
4. Next, click on the 'Mac USB DataBridge PPC' file to start the program.
5. On both MAC systems, a window will appear with the name 'Macintosh HD' and the two connection indicators.
6. Click on 'Connect -> Remote' to view the contents of the second MAC system.

7. A second window will now open. This window displays the contents of the second MAC system.
8. The PC-Linq Manager works in the same way as Windows Explorer. You can, therefore, cut and paste files and folders from one system to the other.

Two indicators are displayed in the top left-hand corner of the PC-Linq Manager. The left-hand indicator represents the first MAC system (Local) and the right-hand indicator represents the second MAC system (Remote).

Both indicators display the status of the connection between the systems. Green means that there is a connection and red means that there is no connection between the systems.

For a good connection between the two systems, both indicators should be green.

If one indicator is red, this means that the USB cable has not been connected correctly, the driver has not been installed correctly or the system concerned is in the 'Sleep' mode.

For more information concerning the use of PC-Linq, click on Help on the right-hand side of the program's menu bar.

A black rectangular box containing the white letters 'UK' in a bold, sans-serif font.

6. Troubleshooting

Method

1. Read the solutions given below.
2. Check for up-to-date FAQ's, drivers and instruction manuals on the Internet (www.trust.com/12823).

Problem	Cause	Possible solution
No driver can be found.	The wrong file location has been given.	Give the correct location of the driver for your operating system.
Both indicators remain red.	USB DATA LINK F12M has not been installed correctly.	Check on both systems whether the cable has been connected to the USB port correctly.
	The driver has not been installed correctly.	Remove all the old drivers (see chapter 4.1) and reinstall the driver provided (see chapter 4.2).
Windows does not detect a new device after connecting the USB DATA LINK F12M.	The computer's USB port does not work.	Try a different port or connect the device to a different computer.
	The USB DATA LINK F12M has not been connected to the USB port.	Connect the USB DATA LINK F12M to a USB port.
The computer becomes jammed when using the USB connection.	The USB DATA LINK F12M is connected to a USB hub which does not have a power supply.	Connect the USB DATA LINK F12M to a USB hub which has a power supply or to a USB port on your computer.
	The USB port has shared an IRQ with another device.	Remove cards from the computer or divide the IRQ's differently.

Table 3: Troubleshooting

Check the FAQ's on the Internet (www.trust.com). You can also register your product at www.trust.com, so that you can receive optimal guarantee and service support. You will be automatically informed of developments to your product and other Trust products. You will also have the chance of winning some spectacular prizes.

If you still have problems after trying these solutions, please contact one of the Trust Customer Care Centers. The last page of this electronic instruction manual, as well as the back of the printed installation manual, contains more information. Please have the following information available:

- The article number. This is 12823.
- Your hardware information.
- Your operating system and the version.
- A good description of what does not work.
- A good description of when the problem occurs.

7. Specifications

Settings	Plug and Play for Windows 98 / Windows ME / Windows 2000 & Windows XP
Max. speed	12 Mbits/second
Connection	USB
Performance improvements	Full duplex
Cable length	300 cm
Suitable for	Windows 98 / Windows ME / Windows 2000 /Windows XP and Macintosh systems with Mac 8.6 or higher.

Table 4: Specifications

A black rectangular box containing the white letters "UK" in a bold, sans-serif font.

8. Trust Customer Care Centers

www.trust.com	
Residents in the UK and Ireland should contact:	
From 8:00 - 16:00	UK Office Phone +44-(0)0845-6090036 Fax +44-(0)1376-514633
I residenti in Italia possono contattare:	
Orario: 9:00 - 13:00 / 14:00 -18:00	Ufficio italiano Telefono +39-051-6635947 Fax +39-051-6635843
Les habitants de la France et de l'Afrique du Nord peuvent contacter :	
De 9:00 à 17:00	Bureau français Téléphone +33-(0)825-083080 Fax +33-(0)1-48630261
Kontaktadresse für Einwohner Deutschlands:	
Erreichbar: 9:00 - 17:00	Deutsche Geschäftsstelle Telefon 0800-00TRUST (0800-0087878) Fax +44-(0)2821-58873
Los habitantes de España pueden ponerse en contacto con:	
De las 9:00 a las 17:00 horas	Oficina española Teléfono +34-(0)902-160937 Fax +31-(0)78-6543299
Inwoners van Nederland kunnen contact opnemen met:	
Van 9:00 - 17:00 uur	Kantoor Nederland Telefoon 0800-BELTRUST (0800-23587878) Fax +31-(0)78-6543299
All other countries / Alle anderen Länder / Tous les autres pays Tutti gli altri paesi / Todos los demás países / Alle andere landen	
From: 9:00 - 17:00	European Head Office Phone +31-(0)78-6549999 Fax +31-(0)78-6543299