

**UK**

# **TRUST 10/100 MB CARDBUS NETWORK CARD**

**Instruction manual**

Version 1.0

## Thank you

Thank you very much for purchasing this product from the Trust range. We wish you hours of fun with it. Please read this manual carefully before using the product.

## Registration

Register your purchase via our Internet site at [www.trust.com](http://www.trust.com) so that you can receive optimal guarantee and service support. You will be automatically informed of developments to your product and other Trust products. You will also have the chance of winning some spectacular prizes.

## Copyright statement

No part of this instruction manual may be reproduced or transmitted, in any form or by any means, electronic or mechanical, including photocopying, recording, or information storage and retrieval systems, for any purpose other than the purchaser's own personal use, without prior written permission from the manufacturer.

## Disclaimer statement

The manufacturer specifically disclaims all warranties, either express or implied, including, but not limited to, implied warranties for the marketability and suitability for a particular purpose, with respect to the software, the accompanying product manual(s) and written material, and all other accompanying hardware. The manufacturer reserves the right to revise or make improvements to its product at any time and without obligation to notify any person of such revisions or improvements.

In no event shall the manufacturer be liable for any consequential or incidental damages, including any loss of business profits or any other commercial damages, arising out of the use of its products.

All company or product names are trademarks or registered trademarks of their respective owners.

## Contents

1. Introduction .....	3
1.1 Conventions used in the manual .....	3
1.2 Contents of the box.....	3
1.3 Minimum system requirements .....	3
2. Safety.....	4
3. Network devices.....	4
3.1 Network adapter .....	4
3.2 Connections.....	4
3.3 Cables.....	4
3.3.1 Coax network cable.....	5
3.3.2 UTP / STP network cable .....	5
3.3.3 Cross-linked network cable.....	5
3.4 Hub .....	5
4. Functions .....	5
5. Installation .....	6
5.1 Uninstalling old drivers and devices.....	6
5.2 Installation .....	6
5.2.1 Windows 98.....	6
5.2.2 Windows ME .....	8
5.2.3 Windows 2000.....	10
5.2.4 Windows XP .....	11
5.3 Checking after the installation.....	11
6. Network settings .....	11
6.1 Games and Network.....	12
6.2 Protocols.....	12
6.3 Sharing files and printers .....	12
6.3.1 Sharing files .....	12
6.3.2 Sharing printers.....	12
6.4 Warning .....	12
6.5 Windows 98 and Windows ME.....	12
6.5.1 Network identification.....	12
6.5.2 Adding and removing a protocol .....	13
6.5.3 TCP/IP settings .....	13
6.6 Windows 2000.....	14
6.6.1 Network identification.....	14
6.6.2 Adding and removing a protocol .....	15
6.6.3 TCP/IP settings .....	15


 UK

<b>6.7</b>	<b>Windows XP</b> .....	<b>16</b>
6.7.1	Adding and removing a protocol .....	16
6.7.2	Netbeui protocol .....	17
6.7.3	TCP/IP settings .....	17
6.7.4	Network settings .....	18
<b>7.</b>	<b>Troubleshooting</b> .....	<b>20</b>
7.1	It is not possible to make a connection .....	20
7.2	Cannot make a connection in Windows 98 / Windows ME .....	20
7.3	The Novell NetWare server has not been found .....	21
7.4	Other problems .....	21
<b>8.</b>	<b>Specifications</b> .....	<b>23</b>
<b>9.</b>	<b>Trust Customer Care Centers</b> .....	<b>24</b>

## 1. Introduction

This instruction manual is for users of the TRUST 10/100 MB CARDBUS NETWORK CARD. Some knowledge of networks is recommended to install and use this product.

The TRUST 10/100 MB CARDBUS NETWORK CARD makes it possible for you to connect your computer to a network so that you can access other computers.

The TRUST 10/100 MB CARDBUS NETWORK CARD can also be used together with your TV cable modem, so that you can access the Internet via your television cable.

Please consult one of the Trust Customer Care Centers if you have any problems. The last page of this electronic instruction manual, as well as the back of the printed, quick installation manual, contains more information about these Customer Care Centers.

UK

### 1.1 Conventions used in the manual

The following conventions have been used in the manual to indicate instructions:

**<Key>** Here you should press a key. The name of the key is given between brackets.

**'System'** This is a specific term used in a program. These are terms used by, for example, Microsoft Windows 98.

**[DIR]** Type the text shown between brackets [...].

Extra information will be shown as follows:

**Note:** *Install the device before installing the software.*

The examples assume that the letter "D" has been assigned to your CD-ROM drive. If your system uses a different letter for your CD-ROM drive, for example "E", you should replace "D" by "E".

### 1.2 Contents of the box

Check the contents of the box before reading the instruction manual. It should contain the following:

- Cardbus network adapter
- Protective bag
- CD-ROM containing the driver and the software
- Multilanguage instruction manual

If anything is missing or damaged, please contact one of the Trust Customer Care Centers. You can find more information at the back of this instruction manual.

### 1.3 Minimum system requirements

- Pentium CPU
- Free cardbus (32 bit type II / III)
- 16 MB RAM
- CD-ROM drive
- 4 MB free disk space
- Windows 98 / Windows 2000 / Windows ME / Windows XP

Check [www.trust.com/12776](http://www.trust.com/12776) for the latest operating system support.

## 2. Safety

Carefully read the following instructions before use:

- The TRUST 10/100 MB CARDBUS NETWORK CARD does not require any special maintenance. Use a slightly damp, soft cloth to clean the device.
- Do not use aggressive substances, such as petrol or white spirit, to clean the device. These may harm the material.
- Do not submerge the device in liquid. This may be dangerous and will damage the device. Do not use this device near water.
- Make sure nothing is placed on the power cable. Do not use this device in an area where the cable can become worn or damaged as a result of people walking over it.
- Do not repair this device yourself. This device must only be repaired by qualified personnel.
- Under the following circumstances, have the device repaired by qualified personnel:
  - The cable or plug is damaged or worn.
  - The device has come into contact with rain, water or another liquid.

## 3. Network devices

You need a number of different components to create a network, such as a network adapter, cables and a hub.

### 3.1 Network adapter

A network adapter is a link between the software and the physical network. It enables computers to *communicate* with each other.

Network adapters are available in various designs: Add-on cards (PCI or ISA), PC Card and cardbus (for notebooks) and USB, such as the Trust 10/100 MB Network Adapter.

### 3.2 Connections

Network devices can use various connections to connect to the network, such as Coax, UTP/STP or both.

### 3.3 Cables

The correct cables are necessary to connect different systems to each other. Figure 1 shows a number of different cables.



**Figure 1: Examples of network cables**

1. UTP / STP network cable.
2. Cross-linked network cable.
3. Coax network cable with a T-joint and a terminator.



**3.3.1 Coax network cable**

This cable can be used to connect different computers to each other. A T-joint should be fitted to every network card. The first and last computer in the network should have a terminator on the T-joint. The maximum speed of a Coax network is 10 MB.

Coax network cables are not used with Trust Network products.

**3.3.2 UTP / STP network cable**

This cable is used for 10 MB and 100 MB networks. A hub should be used to connect computers to each other. This type of cable should also be used with the Trust 10/100 MB Cardbus Network Card.

**3.3.3 Cross-linked network cable**

Use this cable to connect two computers directly to each other. It is not possible to extend this network. The maximum speed of the network can be either 10 MB or 100 MB.

**3.4 Hub**

A network in which a hub is used is called a star network. When there is a fault in the cable, only one system will be affected and not the whole network.

Various hubs are available, such as internal and external hubs with 4, 5, 8 and 16 ports. Hubs are also available in speeds of 10 MB, 100 MB or 10/100 MB (Switch hub).

Hubs can be connected to each other using an 'up-link' port to create a network with other systems.

**4. Functions**

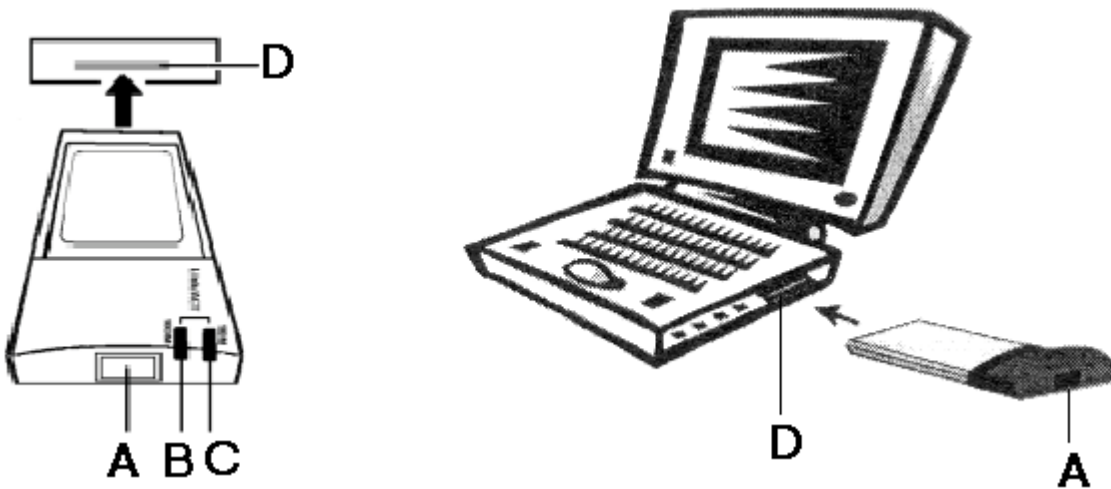


Figure 2: Trust 10/100 MB Cardbus Network Card

	Function
<b>A</b>	Connection for network cable (RJ45)
<b>B</b>	Flashes green for 100 MB data transfer
<b>C</b>	Flashes green for 10 MB data transfer
<b>D</b>	PCMCIA slot type 2

Table 1: Trust 10/100 MB Cardbus Network Card

## 5. Installation

### 5.1 Uninstalling old drivers and devices

The most common cause of faults during installation is the presence of a driver for a similar, old product. The best solution is to first remove all drivers related to old devices before installing the new driver.

1. Enter the Windows 'Safe Mode' (press F8 when starting Windows and then select 'Safe Mode' from the menu which is displayed).
2. Go to 'Start – Settings – Control Panel' and double-click on the 'Add/Remove Programs' icon.
3. Find all the programs for similar, old devices and remove these by clicking on the 'Add/Remove' button. When in the 'Safe Mode', it is possible for some programs to appear twice. In that case, remove all the programs which appear twice.
4. Restart the computer.

### 5.2 Installation

**Note:** The latest drivers can be downloaded from [www.trust.com/12776](http://www.trust.com/12776). Check whether a new driver is available and use this for the installation.

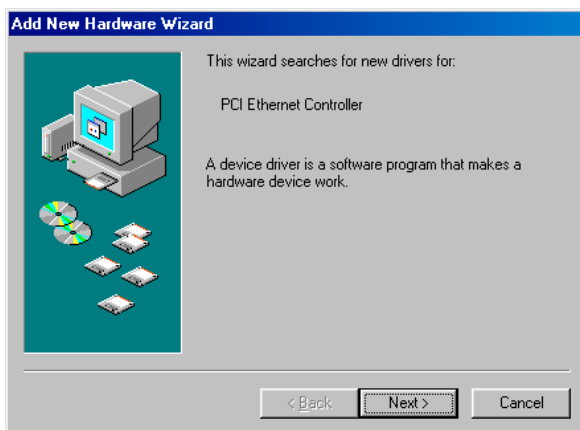
**Note:** Make sure all other programs are closed during the installation.

**Note:** During installation in Windows XP, you may receive a message saying that the driver has not been signed. This does not cause a problem for the functionality.

**Note:** In the examples, the CD-ROM drive is indicated by "D:\". This may be different for your computer.

#### 5.2.1 Windows 98

1. Start Windows 98.
2. Connect the RJ45 plug on the network cable (UTP/STP) to connection A on your Trust 10/100 MB CARDBUS NETWORK CARD.
3. Insert the CD-ROM into your CD-ROM drive.
4. Insert the TRUST 10/100 MB CARDBUS NETWORK CARD into a free PCMCIA type 2 slot (see figure 1). Windows will detect new hardware (see figure 3).



**Figure 3: Installation in Windows 98 / Windows ME**

5. Click on 'Next' to continue. Figure 4 will appear.





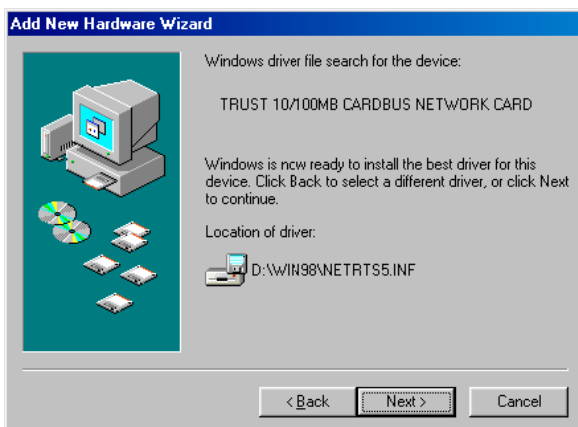
**Figure 4: Searching for the best driver**

6. Select the first option (Search for the best driver for your device) and click on 'Next'. Figure 5 will appear.



**Figure 5: Specifying the location of the driver**

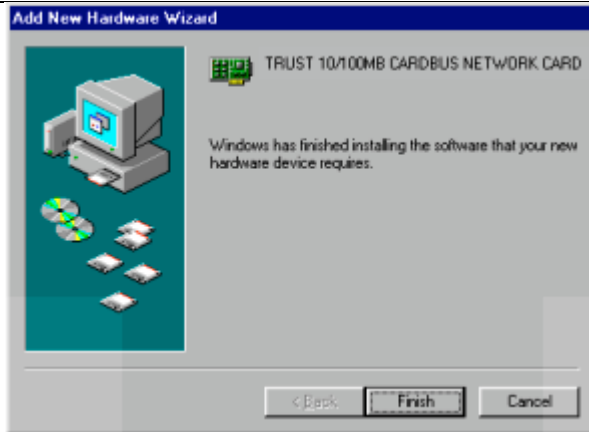
7. Select the last option (Specify a location) and type [D:\WIN98] in the command line as the location of the driver. Next, click on 'Next'. Figure 6 will appear.



**Figure 6: Driver found**

8. Click on 'Next'. A number of files will be copied to your hard disk. During the installation, you may be asked by Windows to insert your Windows CD-ROM. In that case, insert the CD-ROM into your CD-ROM drive and click on 'OK'. Figure 7 will appear after the files have been copied to your hard disk.

## TRUST 10/100 MB CARDBUS NETWORK CARD



**Figure 7: Installation in Windows 98**

9. Click on 'Finish' to complete the installation. You may have to restart your computer.

Continue to chapter 5.3 to see whether the Trust 10/100 MB Cardbus Network Card has been installed correctly.

### 5.2.2 Windows ME

1. Start Windows ME.
2. Connect the RJ45 plug on the network cable (UTP/STP) to connection A on your Trust 10/100 MB CARDBUS NETWORK CARD.
3. Insert the CD-ROM into your CD-ROM drive.
4. Insert the TRUST 10/100 MB CARDBUS NETWORK CARD into a free PCMCIA type 2 slot (see figure 1).
5. Windows will detect new hardware. Figure 8 will appear.



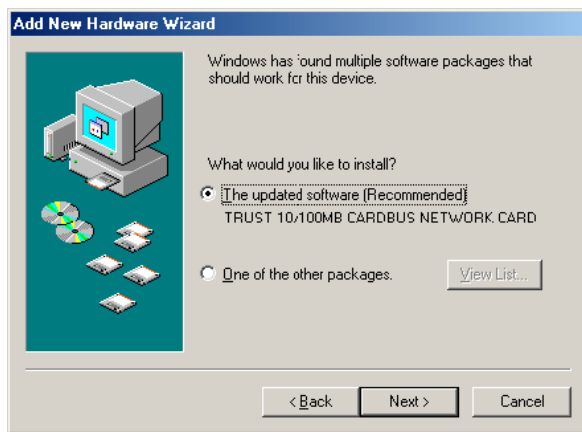
**Figure 8: Installation in Windows ME**

6. Select "Specify the location of the driver (Advanced)" and click on 'Next'. Figure 9 will appear.



**Figure 9: Installation in Windows ME**

7. Select "Specify a location" and type [D:\WINME] as the location of the driver. Click on 'Next' to continue. Figure 10 will appear.



**Figure 10: Installation in Windows ME**

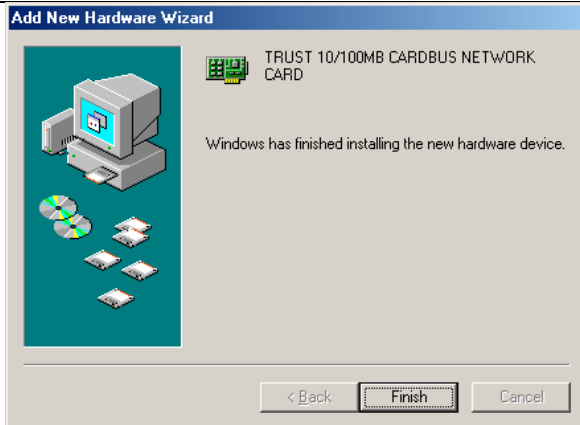
8. Click on 'Next' to continue. Figure 11 will appear.



**Figure 11: Installation in Windows ME**

9. Click on 'Next'. Figure 12 will appear after the installation has been completed.

## TRUST 10/100 MB CARDBUS NETWORK CARD



**Figure 12: Installation in Windows ME**

10. Click on 'Finish' to complete the installation of the driver. You will now be asked whether you wish to restart your computer. Always restart your computer, so that the new settings can be activated.

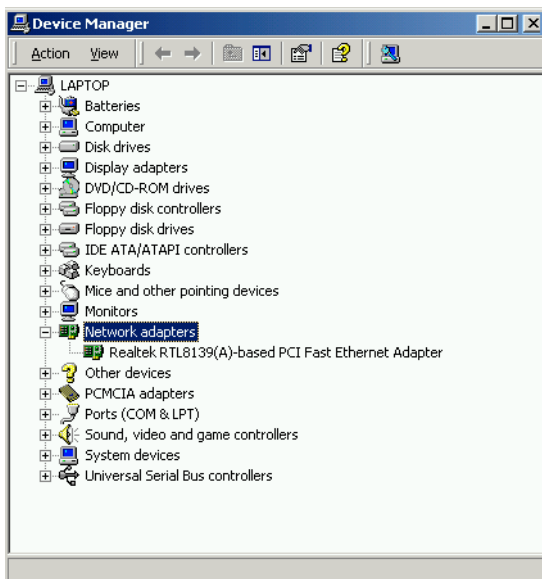
Continue to chapter 5.3 to see whether the Trust 10/100 MB Cardbus Network Card has been installed correctly.

### 5.2.3 Windows 2000

1. Start Windows 2000.
2. Connect the RJ45 plug on the network cable (UTP/STP) to connection A on your Trust 10/100 MB CARDBUS NETWORK CARD.
3. Insert the CD-ROM into your CD-ROM drive.
4. Insert the TRUST 10/100 MB CARDBUS NETWORK CARD into a free PCMCIA type 2 slot (see figure 1).
5. Windows will detect new hardware (Realtek 8139(A)-based PCI Fast Ethernet Adapter). Since Windows 2000 has a driver for this device, it will be installed as: 'Realtek 8139(A)-based PCI Fast Ethernet Adapter'. You can check this under 'Network adapters' in the 'Device Manager'

'Start – Settings – Control Panel'. Double-click on the 'System' icon and select the 'Device Manager' tab.

- Network adapters – Realtek 8139(A)-based PCI Fast Ethernet Adapter (see figure 13).



**Figure 13: Windows 2000 Device Manager**

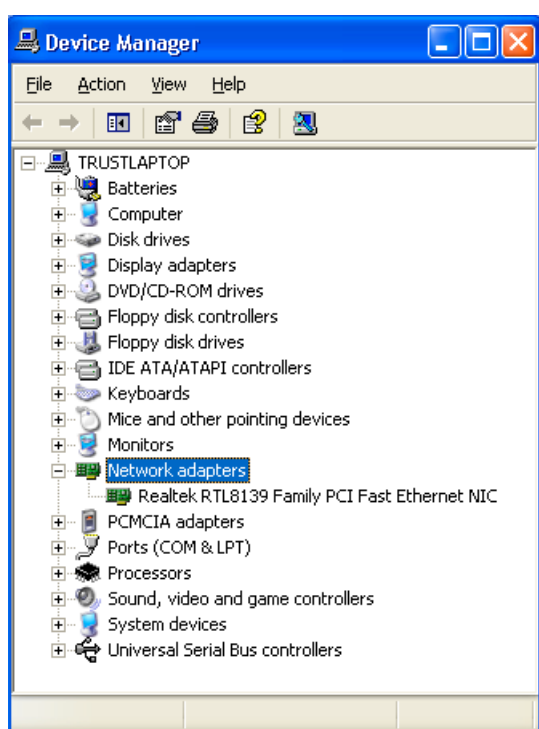


## 5.2.4 Windows XP

1. Start Windows XP.
  2. Connect the RJ45 plug on the network cable (UTP/STP) to connection A on your Trust 10/100 MB CARDBUS NETWORK CARD.
  3. Insert the TRUST 10/100 MB CARDBUS NETWORK CARD into a free PCMCIA type 2 slot (see figure 1).
  4. Windows will detect new hardware (Realtek 8139 Family PCI Fast Ethernet NIC)
- Since Windows XP has a driver for this device, it will be installed as:  
 'Realtek 8139 Family PCI Fast Ethernet NIC'.  
 You can check this under 'Network adapters' in the 'Device Manager'

'Start – Settings – Control Panel'. Double-click on the 'System' icon and select the 'Device Manager' tab.

- Network adapters – Realtek 8139 Family PCI Fast Ethernet NIC (see figure 14).



**Figure 14: Windows XP Device Manager**

## 5.3 Checking after the installation

After installing the device and the driver, the following are installed on your computer and can be checked:  
'Start – Settings – Control Panel'. Double-click on the 'System' icon and select the 'Device Manager' tab.  
 - Network adapters – TRUST 10/100 MB CARDBUS NETWORK CARD

**Note:** *The information given above will vary when the installation has been altered by the user (for example, not everything has been installed or locations other than the default locations have been selected).*

**Note:** *Deviations may also occur as a result of using new drivers available on the Internet.*

**Note:** *The location or name in the 'Control Panel' may vary for different operating systems.*

## 6. Network settings

This chapter explains the Windows network settings. Procedures are not described in detail, however. For more information, please refer to the Windows instruction manual, the Windows Online Help or contact Microsoft.

## 6.1 Games and Network

Most computer games that are now released support 'Multiplayer'. This means that more than one player can play the game via a network. Please refer to the instruction manual provided with the game for information concerning 'Multiplayer'. The instruction manual will also state which protocols the game supports and how these must be installed.

## 6.2 Protocols

A protocol is a type of language which computers use to communicate with each other. Each protocol has its own specific properties. A short description is given below of the most common protocols:

**IPX / SPX:** This protocol is mainly used in Novell networks and also with games.

**TCP / IP:** This protocol is used for Windows networks and the Internet. This protocol is also used for games.

Use the following series for fixed TCP/IP addresses: 192.168.0.0 to 192.168.255.255, subnet mask = 255.255.255.0

***NOTE:** Other TCP/IP settings are also used on the Internet. If you use a different address series than those given above, your Internet connection may not function correctly.*

**NETBEUI:** This protocol is easy to use and is mainly used in Microsoft networks. This protocol is ideal for sharing files and printers.

## 6.3 Sharing files and printers

A number of settings must be made to allow other computers access to files on your computer and/or your printer. This service should be installed. See Windows Help for more information.

### 6.3.1 Sharing files

In a network, a hard disk or directory is accessible via a share. A hard disk or directory must first be 'shared' to become accessible. The sharing of files and printers must first be activated before shares can be made.

You must indicate this in the Windows network settings. You then make a hard disk or directory shareable by indicating this in its properties.

Click on the 'Network Neighborhood' icon on the desktop to access a shared hard disk or directory. A drive letter can be assigned to a share so that it can be accessed directly from each application. You can set the letter in the share's properties.

### 6.3.2 Sharing printers

Printers are shared in a similar way to files. You indicate that the printer is shared in its properties. Only then will the printer be available on the network.

Everybody who wishes to use a shared printer must install that printer's driver. It must also be indicated that it is a network printer and not a local printer.

## 6.4 Warning

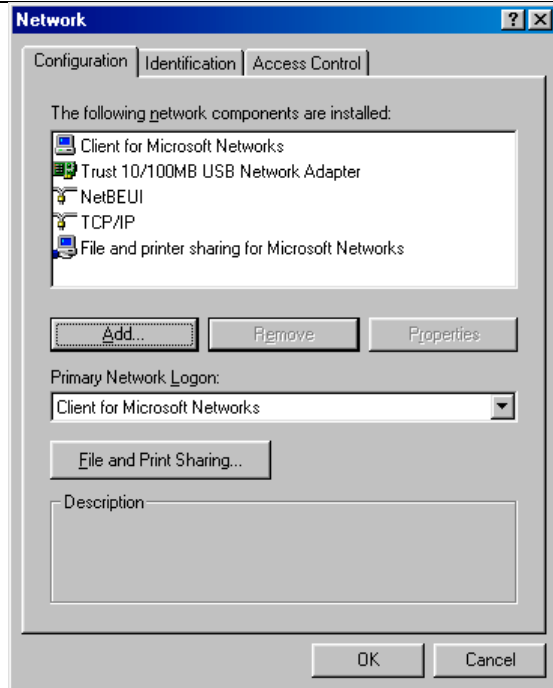
The TCP/IP protocol is also used for the Internet. If you have set up a TCP/IP and switched on file and printer sharing, it is possible that somebody could access your hard disk and/or printer via the Internet.

To prevent this problem, switch off file and printer sharing or remove 'Client for Microsoft Network'. (Make sure that the TCP/IP protocol and your network card are installed.)

## 6.5 Windows 98 and Windows ME

### 6.5.1 Network identification

1. Go to the 'Control Panel' (Start – Settings – Control Panel).
2. Double-click on the 'Network' icon. Figure 15 will appear.



**Figure 15: Network settings**

3. Click on the 'Identification' tab.
4. Change the settings and click on 'OK'.

### 6.5.2 Adding and removing a protocol

A protocol is a language your computer uses to communicate with other computers. See chapter 6.2 or Windows Help for more information.

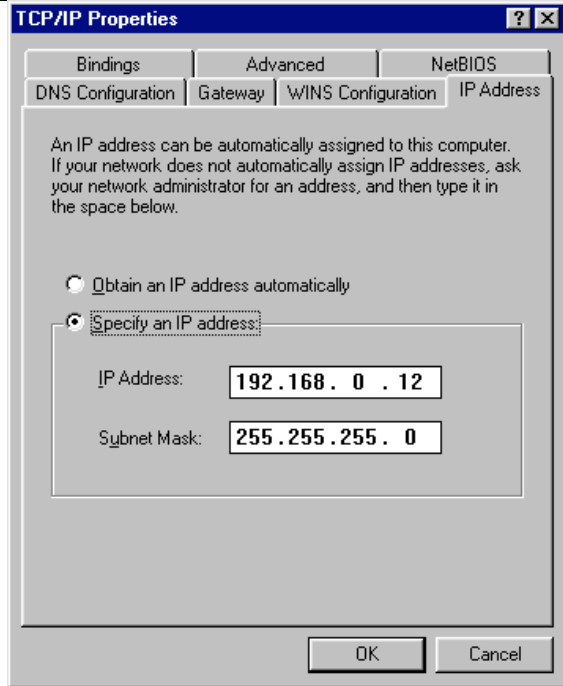
1. Go to the 'Control Panel' (Start – Settings – Control Panel). Figure 15 will appear.
2. Click on 'Add', select 'Protocol' and, from the list, select the protocol you wish to install.
3. From the list (see figure 15), select the protocol that you wish to remove and click on 'Remove'.

### 6.5.3 TCP/IP settings

Follow the instructions below to give each computer in a network a fixed TCP/IP address.

1. Open the 'Network' window.
2. Select 'TCP/IP' (see figure 15).
3. Click on 'Properties'.
4. Click on the 'IP Address' tab. Figure 16 will appear.





**Figure 16: TCP/IP settings**

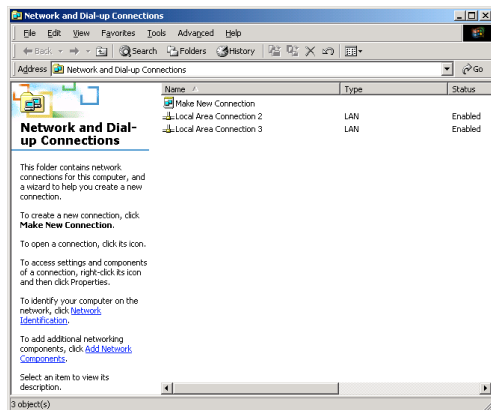
5. Select 'Specify an IP address' to use a fixed TCP/IP address.
6. Give a TCP/IP address. This address must be unique in the network. Only change the last figure for other computers in the network. This number must be between 1 and 254.
7. For 'Subnet Mask', fill in 255.255.255.0  
This address must be the same for every computer in the network.
8. Click on 'OK' to return to the 'Network' window.

## 6.6 Windows 2000

### 6.6.1 Network identification

Follow the instructions below to set or change your computer name and/or workgroup name:

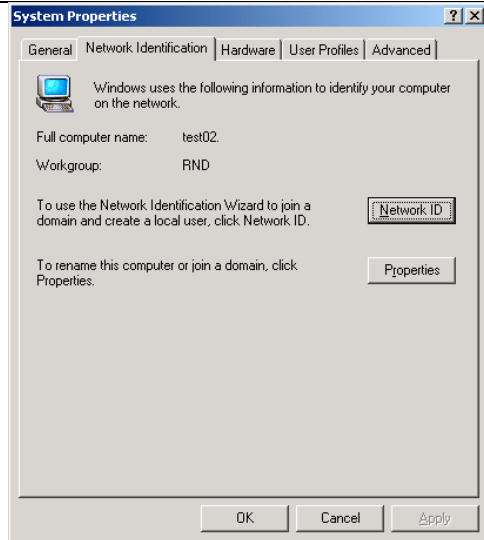
1. Go to the 'Control Panel' (Start – Settings – Control Panel).
2. Double-click on the 'Network and Dial-up Connections' icon. Figure 17 will appear.



**Figure 17: Network and Dial-up connections**

3. Click on 'Network Identification'. Figure 18 will appear.





**Figure 18: Network identification**

4. Click on 'Properties' to change your computer's name and/or workgroup name.

**Note:** Your computer name must not contain any spaces.

5. Click on 'OK' to accept the changes.
6. Click on 'OK' to restart the computer.

Your network identification has now been changed.

### 6.6.2 Adding and removing a protocol

A protocol is a language your computer uses to communicate with other computers. See chapter 6.2 or Windows Help for more information.

Follow the instructions below to add or remove a protocol:

1. Open 'Network and Dial-up Connections' (Start – Settings – Control Panel).
2. Double-click on the 'Local Area Connection x' icon which is connected to the Trust 10/100 MB Cardbus Network Card.
3. Click on 'Properties' in the window that appears.
4. Click on 'Install' to install network components, such as Client, Service or Protocol.
5. Click on 'Uninstall' to remove the marked item.

### 6.6.3 TCP/IP settings

Follow the instructions below to give each computer in the network a fixed TCP/IP address.

1. Open 'Network and Dial-up Connections' (Start – Settings – Control Panel).
2. Double-click on the 'Local Area Connection x' icon which is connected to the Trust 10/100 MB Cardbus Network Card.
3. Click on 'Properties' in the window that appears.
4. Select 'Internet Protocol (TCP/IP)' and click on 'Properties'.
5. Mark the 'Use the following IP address' option.
6. Give a TCP/IP address for 'IP-Address'.  
This address must be unique in the network. Only change the last figure for other computers in the network. Advice: 192.168.0.x; x = 1 – 254.
7. For 'Subnet Mask', fill in 255.255.255.0.  
This address must be the same for every computer in the network.
8. Click on 'OK' to continue.



9. Click on 'Close' to confirm the settings.

## 6.7 Windows XP

### 6.7.1 Adding and removing a protocol

A protocol is a language your computer uses to communicate with other computers. See chapter 6.2 or Windows Help for more information.

Follow the instructions below to add or remove a protocol.

1. Open 'Network Connections' (Start – Control Panel).
2. Double-click on the 'Network Connections' icon. Figure 19 will appear.

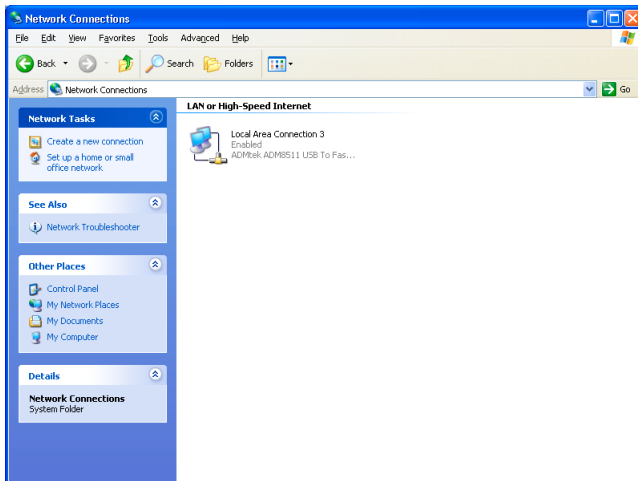


Figure 19: Adding a protocol

3. Right-click on the 'Local Area Connection' icon and click on 'Properties'. Figure 20 will appear.

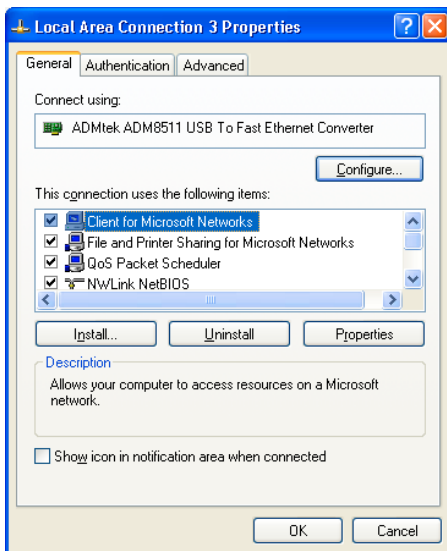
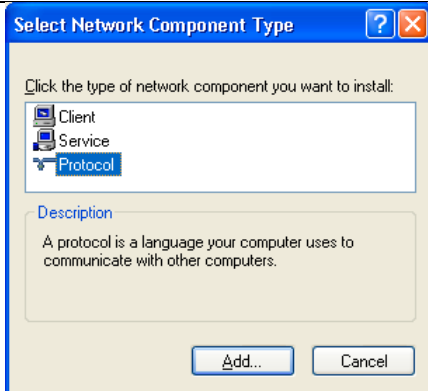


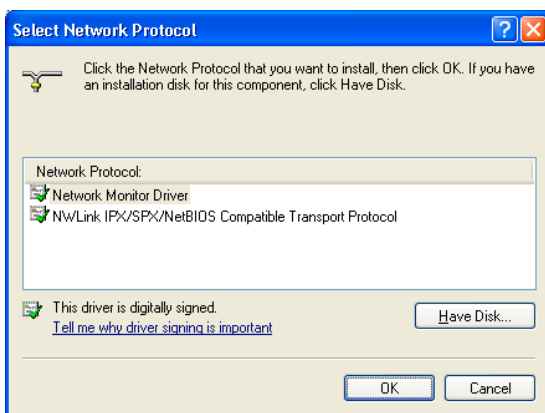
Figure 20: Adding a protocol

4. Click on 'Install..'. Figure 21 will appear.



**Figure 21: Adding a protocol**

- Click on 'Protocol' and then 'Add'. Figure 22 will appear.



**Figure 22: Adding a protocol**

- Click on the network protocol that you wish to install and click on 'OK'. Figure 25 will appear.
- The new protocol will be added to the list.
- Repeat steps 1 to 6 to add more protocols. Click on 'OK' once you have added all the protocols you wish to add (see figure 20).
- Restart Windows XP to activate your new network settings.

You may also wish to remove a network protocol. If you wish to remove a protocol, click on 'Uninstall' instead of 'Install' (in point 4) to remove the marked protocol.

### 6.7.2 Netbeui protocol

Carry out the following if you wish to install the Netbeui protocol.

- Copy the nbfsys file from your Windows XP CD-ROM (VALUEADD\MSFT\NET\NETBEUI) to the C:\WINDOWS\SYSTEM32\DRIVERS directory.
- Copy the netnbf.inf file from your Windows XP CD-ROM (VALUEADD\MSFT\NET\NETBEUI) to the C:\WINDOWS\INF directory.

Next, follow points 1 to 9 given in chapter 6.7.1.

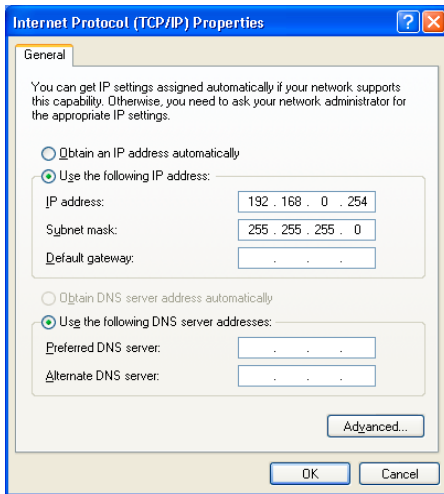
### 6.7.3 TCP/IP settings

Follow the instructions below to give each computer in the network a fixed TCP/IP address.

- Open 'Network Connections' (Start – Control Panel).
- Double-click on the 'Network Connections' icon. Figure 19 will appear.
- Right-click on the 'Local Area Connection' icon and click on 'Properties'. Figure 20 will appear.

## TRUST 10/100 MB CARDBUS NETWORK CARD

4. Select 'Internet Protocol (TCP/IP)' and click on 'Properties'. Figure 23 will appear.



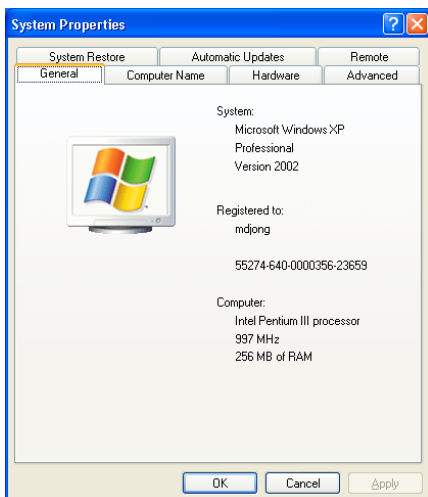
**Figure 23: TCP/IP settings**

5. Give a TCP/IP address for 'IP-Address'. This address must be unique in the network. Only change the last figure for other computers in the network. Advice: 192.168.0.x; x = 1 – 254.
6. For 'Subnet Mask', fill in 255.255.255.0. This address must be the same for every computer in the network.
7. Click on 'OK' to continue.
8. Click on 'Close' to save the settings.

### 6.7.4 Network settings

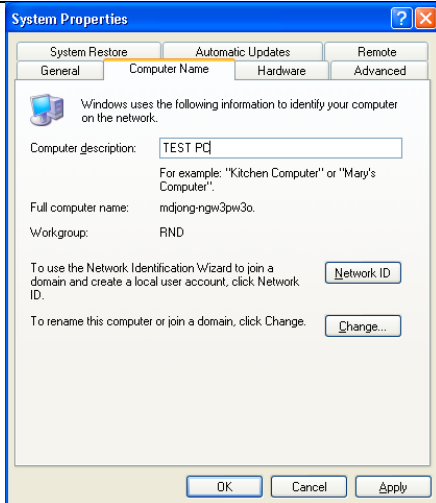
Follow the instructions below to set or change your computer name and/or workgroup name:

1. Go to the 'Control Panel' (Start – Control Panel).
2. Double-click on the 'System' icon. Figure 24 will appear.



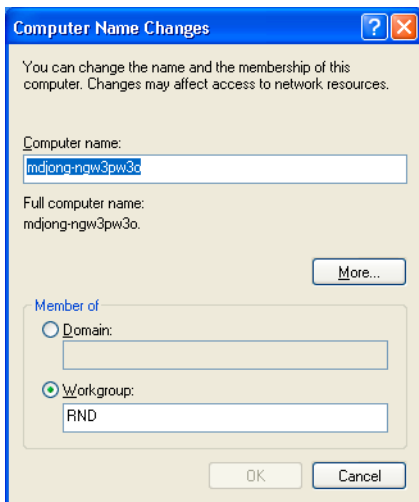
**Figure 24: Network settings**

3. Click on the 'Computer Name' tab. Figure 25 will appear.



**Figure 25: Network settings**

4. If required, change the description of the computer. Click on 'Change...'. Figure 26 will appear.



**Figure 26: Network settings**

5. The computer name and the name of the workgroup can be changed in the window that appears.

**Note:** Your computer name must not contain any spaces.

6. Click on 'OK' after you have changed the options you wish to alter.
7. Restart Windows XP to activate the changes.



## 7. Troubleshooting

### **Method**

1. Read the solutions given below.
2. Check for up-to-date FAQ's, drivers and instruction manuals on the Internet ([www.trust.com/12776](http://www.trust.com/12776)). !

This chapter is intended to help solve any possible problems.

### **7.1 It is not possible to make a connection**

If the computer cannot make a connection with the server or another computer, first check the following points:

1. Have the drivers for the Trust 10/100 MB Cardbus Network Card been installed correctly? The drivers cannot be installed if the card is faulty or has not been inserted correctly.
2. Have the correct drivers been selected for the network that you wish to use? Ask your Network Administrator for more information about the network.
3. Have the correct values for the type of package and the IP-address been input?
4. Has the plug of the network cable been inserted as far as possible into the adapter's RJ-45 connector?
5. Does the network hub work? Try to make a connection via another workstation which is connected to the same hub.
6. Does the connection run via a hub? Two computers cannot be connected directly to each other via a UTP or STP cable. They can only be connected directly to each other via a 'Cross-link' cable

### **7.2 Cannot make a connection in Windows 98 / Windows ME**

Also see the instruction manual provided with Microsoft Windows for more information.

Check the following:

1. Have the NetBEUI protocol and 'Client for Microsoft networks' been installed? Check the network properties. These components are necessary to make a connection. If necessary, add these components by clicking on 'Add'.
2. Is the NetBEUI protocol bound to the driver for the Trust 10/100 MB Cardbus Network Card? Select 'Bindings' in the 'Network Properties' window. This is only necessary if the connection has been manually broken. This connection is made automatically in Windows 98 when a new network card is installed.
3. Do both systems have the same workgroup name? The workgroup name must be known by the server. If necessary, change the name. Contact the Network Administrator if you do not know the name of your workgroup. The name of a workgroup may not be the same as another computer name in the same network.

### 7.3 The Novell NetWare server has not been found

Check the following:

1. Has the correct package been selected? Most Novell networks use Ethernet\_802.3. Ask your System Administrator for information about the correct type of package.
2. Has the IPX/SPX protocol and the 'Client for Novell networks' been installed in Windows 98?

### 7.4 Other problems

Problem	Cause	Possible solution
<b>No driver can be found.</b>	The wrong file location has been given.	Give the correct location of the driver for your operating system.
<b>A connection cannot be made with the network.</b>	The network cable has not been connected after installing the driver.	Connect the network cable to the network card and the rest of the network.
	The protocols have been set up incorrectly.	Set up the protocols correctly. See the instruction manual included on the CD-ROM.
<b>No communication is possible with another computer.</b>	The network cable has not been connected properly.	Connect the network cable to the network card and check whether one of the indicators starts to flash.
	The wrong network cable has been used.	Use a UTP/STP cable.
	The network cable has been inserted into the wrong port on the hub.	Insert the cable into a standard port on the hub and not the up-link port.
	The cable has been connected directly from network card to network card.	Only use a 'cross-linked' network cable.
	The wrong protocol has been used.	Select the correct protocol. See the chapters of the appropriate Windows version for more information.
	File and printer sharing have not been selected (only for Windows 9x).	Select file and printer sharing. See Windows Help for more information.
	The workgroup names are not the same.	Select the correct workgroup name. See 'Network Identification' for the appropriate operating system.
<b>Windows does not detect a new device after inserting the TRUST 10/100 MB CARDBUS NETWORK CARD.</b>	The computer's PCMCIA slot does not work.	Try a different PCMCIA slot or connect the device to a different computer.
	The TRUST 10/100 MB CARDBUS NETWORK CARD has not been inserted into the PCMCIA slot correctly.	Insert the TRUST 10/100 MB CARDBUS NETWORK CARD firmly into the PCMCIA slot.

Table 2: Troubleshooting

Check the FAQ's on the Internet ([www.trust.com](http://www.trust.com)). You can also register your product at [www.trust.com](http://www.trust.com), so that you can receive optimal guarantee and service support. You will be automatically informed of developments to your product and other Trust products. You will also have the chance of winning some spectacular prizes.

If you still have problems after trying these solutions, please contact one of the Trust Customer Care Centers. The last page of this electronic instruction manual, as well as the back of the printed installation manual, contains more information. Please have the following information available:

- The article number. This is 12776.
- Your hardware information.
- Your operating system and the version.
- A good description of what does not work.
- A good description of when the problem occurs.



## 8. Specifications

<b>Settings</b>	<ul style="list-style-type: none"> <li>• Plug and Play for Windows 98 / Windows Me / Windows 2000 and Windows XP.</li> </ul>
<b>Network type</b>	<ul style="list-style-type: none"> <li>• Normal Ethernet 10 MB</li> <li>• Fast Ethernet 100 MB (in accordance with the 100TX-standard)</li> </ul>
<b>Connection</b>	<ul style="list-style-type: none"> <li>• PCMCIA (32 bit type II / III)</li> </ul>
<b>Performance improvements</b>	<ul style="list-style-type: none"> <li>• Full duplex: Supports Full-duplex mode which increases the speed of data transfer to 20 Mbps/200 Mbps.</li> <li>• Automatic selection of the fastest connection</li> </ul>
<b>Memory</b>	<ul style="list-style-type: none"> <li>• 4K Bytes RAM Data Buffers</li> </ul>
<b>Media connection</b>	<ul style="list-style-type: none"> <li>• RJ45 plug with cable (STP/UTP) for 10 MB / 100 MB.</li> </ul>
<b>Indicators</b>	<ul style="list-style-type: none"> <li>• Green LED to indicate a 10 MB network connection.</li> <li>• Green LED to indicate a 100 MB network connection.</li> </ul>

**Table 3: Specifications**

## 9. Trust Customer Care Centers

<b>www.trust.com</b>	
<b>Residents in the UK and Ireland should contact:</b>	
From 8:00 - 16:00	<b>UK Office</b> Phone +44-(0)0845-6090036 Fax +44-(0)1376-514633
<b>I residenti in Italia possono contattare:</b>	
Orario: 9:00 - 13:00 / 14:00 - 18:00	<b>Ufficio italiano</b> Telefono +39-051-6635947 Fax +39-051-6635843
<b>Les habitants de la France et de l'Afrique du Nord peuvent contacter :</b>	
De 9:00 à 17:00	<b>Bureau français</b> Téléphone +33-(0)825-083080 Fax +33-(0)1-48630261
<b>Kontaktadresse für Einwohner Deutschlands:</b>	
Erreichbar: 9:00 - 17:00	<b>Deutsche Geschäftsstelle</b> Telefon 0800-00TRUST (0800-0087878) Fax +49-(0)2821-58873
<b>Los habitantes de España pueden ponerse en contacto con:</b>	
De las 9:00 a las 17:00 horas	<b>Oficina española</b> Teléfono +34-(0)902-160937 Fax +31-(0)78-6543299
<b>Inwoners van Nederland kunnen contact opnemen met:</b>	
Van 9:00 - 17:00 uur	<b>Kantoor Nederland</b> Telefoon 0800-BELTRUST (0800-23587878) Fax +31-(0)78-6543299
<b>All other countries / Alle anderen Länder / Tous les autres pays Tutti gli altri paesi / Todos los demás países / Alle andere landen</b>	
From: 9:00 - 17:00	<b>European Head Office</b> Phone +31-(0)78-6549999 Fax +31-(0)78-6543299