

TRUST INTERNET KEYBOARD

Instruction Manual

Version 1.0

Thank you

Thank you very much for purchasing this product from the Trust range. We wish you hours of fun with it. Please read this manual carefully before using the product.

Registration

Register your purchase now at the Trust Internet site, www.trust.com, so that you are able to receive optimal guarantee and service support. You will be automatically informed of developments to your product and other Trust products. You will also have the chance to win some spectacular prizes.

Copyright statement

No part of this instruction manual may be reproduced or transmitted, in any form or by any means, electronic or mechanical, including photocopying, recording, or information storage and retrieval systems, for any purpose other than the purchaser's own personal use, without prior written permission from the manufacturer.

Disclaimer statement

The manufacturer specifically disclaims all warranties, either express or implied, including, but not limited to, implied warranties for the marketability and suitability for a particular purpose, with respect to the software, the accompanying product manual(s) and written material, and all other accompanying hardware. The manufacturer reserves the right to revise or make improvements to its product at any time and without obligation to notify any person of such revisions or improvements.

In no event shall the manufacturer be liable for any consequential or incidental damages, including any loss of business profits or any other commercial damages, arising out of the use of its products.

All company or product names are trademarks or registered trademarks of their respective owners.

Contents

1. Introduction	2
1.1 Conventions used in the manual	2
1.2 Contents of the box	2
1.3 Minimum system requirements	2
2. Safety	3
3. Installation	4
3.1 Connecting the keyboard	4
3.2 Internet Keyboard program	4
4. Multimedia buttons	5
5. Programming the buttons	6
6. Troubleshooting	8
7. Specifications	9
8. Trust Customer Care Centers	10



1. Introduction

This instruction manual is for users of the Trust Internet Keyboard. Basic knowledge of computers is sufficient to be able to install this product.

The Trust Internet Keyboard makes it possible for you to easily and accurately input information. The keyboard is connected to your computer via the PS/2 cable.

Please consult one of the Trust Customer Care Centers if you have any problems. The last page of this electronic instruction manual, as well as the back of the printed quick installation manual, contains more information about these Customer Care Centers.

1.1 Conventions used in the manual

The following conventions have been used in the manual to indicate instructions:

<key>	Here you should press a key. The name of the key is given between brackets.
'System'	This is a specific term used in a program. These are terms used by, for example, Microsoft Windows 98.
[DIR]	Type the text shown between brackets [...].
(term)	The text between the parentheses (....) is the English term, e.g. (File) used in the figure referred to.

Extra information will be shown as follows:

Note: *Turn off your computer before connecting the keyboard.*

The examples assume that the letter "D" has been assigned to your CD-ROM drive. If your system uses a different letter for your CD-ROM drive, for example "E", you should replace "D" by "E".

1.2 Contents of the box

Check the contents of the box. It should contain the following:

- Trust Internet Keyboard
- CD-ROM containing the drivers, applications and instruction manuals
- The quick installation manual

If anything is missing or damaged, please contact one of the Trust Customer Care Centers. You can find more information on the last page of this instruction manual.

1.3 Minimum system requirements

- Pentium CPU
- 4MB RAM
- 4MB free HDD space
- PS/2 keyboard connection
- 4-speed CD-ROM drive
- Windows for the special function keys

2. Safety

1. Do not use this device in a damp environment, such as a bathroom, damp basement, swimming pool, etc.
2. Make sure nothing is placed on the power cable. Do not use this keyboard in an area where the cable can become worn or damaged as a result of people walking over it.
3. Do not try to repair this device yourself. If you open this keyboard, you may touch live components.
4. Under the following circumstances, have the device repaired by qualified personnel:
 - a. The keyboard's cable or plug is damaged or worn.
 - b. Liquid has entered the device.
 - c. The device has been dropped or the casing has been damaged.
5. If the keyboard must be cleaned, wipe it down using a damp cloth. Do not use a liquid cleaner or a spray.
6. Do not use the keyboard in a dusty environment. This will reduce the life span.

3. Installation

3.1 Connecting the keyboard

1. Turn the computer off.
2. Connect the keyboard's PS/2 plug to the computer's PS/2 keyboard connection (see figure 1).

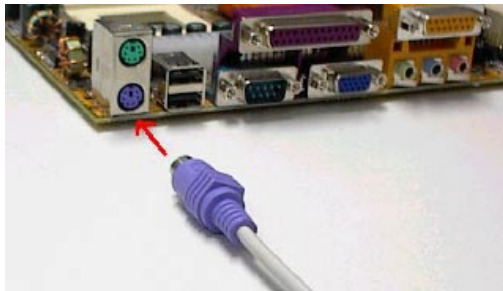


Figure 1: Connecting the keyboard

3. Turn the computer on.

3.2 Internet Keyboard program

You can use the 'Internet Keyboard' program to assign various functions to the Multimedia buttons of the Trust Internet Keyboard. Follow the instructions given below to install the program:

1. Start Windows.
2. Insert the application CD-ROM into your CD-ROM drive.
3. Click on 'Start' and select 'Run'.
4. In the command line, type [D:\ Setup.exe] and click on 'OK' to start the Trust Software Installer (see figure 2).

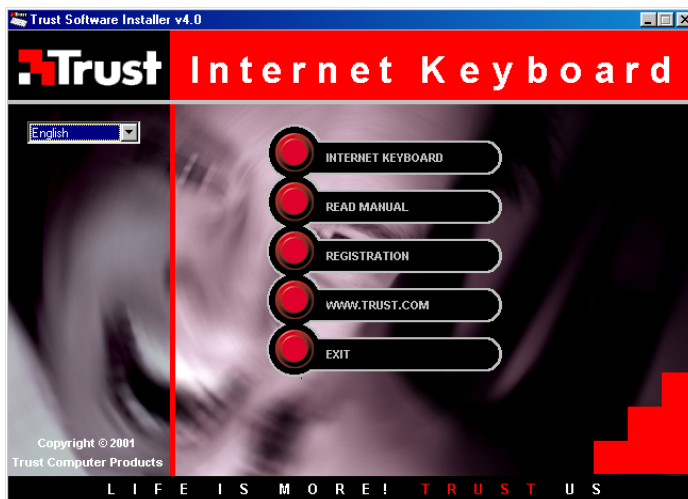


Figure 2: Trust Software Installer

5. In the left-hand window, select the language that you wish to use during the installation.
6. Click on the 'INTERNET KEYBOARD' button to start the installation of this program.

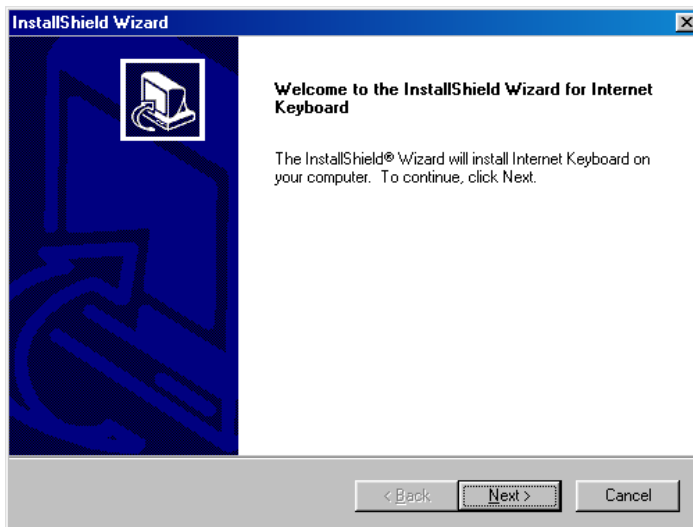


Figure 3: Installing the Internet Keyboard program

7. Click on 'Next'. The program will now be installed (see figure 3).

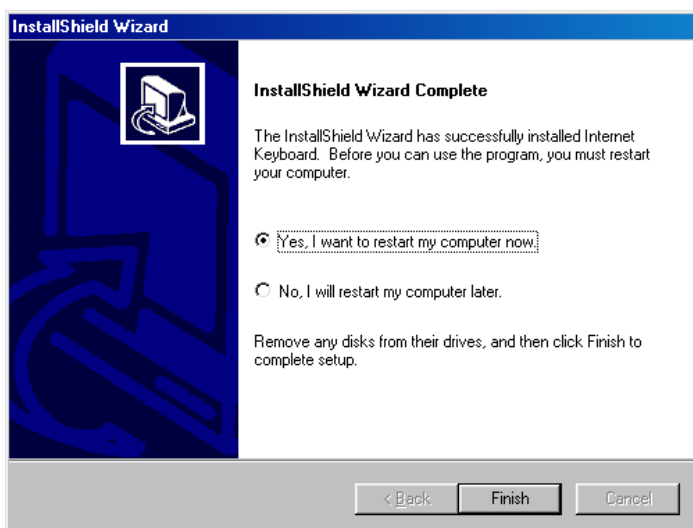


Figure 4: Installation complete

8. Click on 'Finish' to complete the installation and restart your computer (see figure 4).




















You have now completed the installation. After restarting your computer, the 'Internet Keyboard' icon will automatically appear in the Windows taskbar. Click on this icon to start the program.

4. Multimedia buttons

You can use the Multimedia buttons on the Trust Internet Keyboard to easily operate various applications. See the table below for the description of the various buttons:

Button	Description	Function
	Power	Shuts down Windows.
	Sleep	Places Windows in the sleep setting. Note: This function does not work in Windows NT4.



Button	Description	Function
	Email	Starts your default e-mail program.
	Hot Key	Press this button to turn the Multimedia buttons on and off. The 'Hot Key' LED will be lit when the Multimedia buttons are active.
	My Computer	Opens the 'My Computer' folder.
	Calculator	Activates the calculator.
	WWW Home	Starts your default Internet browser.
	WWW Search	Starts your Internet browser's search function.
	WWW Favorites	Opens the folder containing your favourite Internet pages.
	WWW Back	Moves to the previous Internet page.
	WWW Forward	Moves forward to the next Internet page.
	WWW Refresh	Refreshes the current Internet page.
	WWW Stop	Stops downloading the current Internet page.
	Media Select	Starts your default media player (depends on the type of media in your CD-ROM drive).
	Previous Track	When playing a music CD, returns to the start of the current track. If the current track has not yet started, the CD will return to the start of the previous track. When playing a video file, you can also use this button to rewind the video.
	Next Track	When playing a music CD, jumps to the start of the next track. When playing a video file, you can also use this button to forward the video.
	Play/Pause	Starts the music CD or video file. Pauses the CD or video when it is being played. Click on the button again to continue playing.
	Stop	Stops playing the music CD or video file.
	Mute	Turns the sound off when playing a music CD or video file. Click on the button again to turn the sound back on.
	Volume Up	Increases the volume.
	Volume Down	Decreases the volume.

5. Programming the buttons

You can use the 'Internet Keyboard' program to change all the pre-programmed functions of the Multimedia buttons to your own requirements, except for the 'Power', 'Sleep', 'E-mail' and 'Hot Key' buttons. Follow the instructions given below to program the buttons:

1. Click on the 'Internet Keyboard' icon in the Windows taskbar or go to 'Start - Programs - Trust' and select the 'Internet Keyboard' option to start the program (see figure 5).



Figure 5: Internet Keyboard program

2. Use the mouse to click on the button that you wish to reprogram.
3. In the next window, select the 'Functions' option to assign one of the pre-programmed functions given in list to the button (see figure 6).

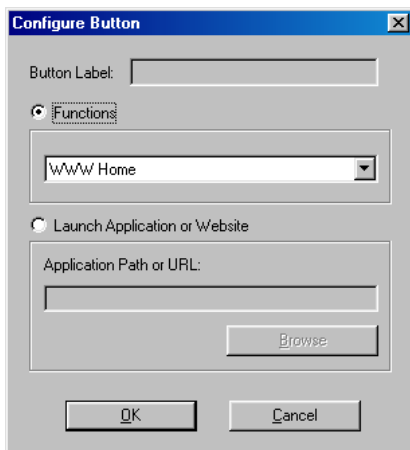


Figure 6: Programming the buttons

4. Select the 'Launch Application or Website' option to assign a different application or Internet page to the button. For 'Application Path or URL', type the URL of the Internet page or the location of the program.
5. For 'Button Label', give a name for the programmed button.
6. Click on 'OK' to activate the changes.

The selected button has now been programmed. Follow the above instructions for every button that you wish to change.



6. Troubleshooting

Problem	Cause	Possible solution
The keyboard does not function.	The keyboard has not been connected correctly.	Connect the keyboard correctly (see chapter 3).
The Multimedia buttons do not function.	The 'Hot Key' button has not been activated.	Click on the 'Hot Key' button. The 'Hot Key' LED will light up (see chapter 4).
	The 'Internet Keyboard' program has not been installed.	Install the 'Internet Keyboard' program (see chapter 3).

Check the FAQ's on the Internet (www.trust.com). You can also register your product at www.trust.com, so that you can receive optimal guarantee and service support. You will be automatically informed of developments to your product and other Trust products. You will also have the chance of winning some spectacular prizes.

If you still have problems after trying these solutions, please contact one of the Trust Customer Care Centers. You can find more information on the last page of this instruction manual. Please have the following information available:

- The article number. This is 12268 (US) / 12267 (SW) / 12266 (UK) / 12265 (NW) / 12264 (IT) / 12263 (GM) / 12262 (FR) / 12261 (DN).
- Your hardware information.
- A good description of what does not work.
- A good description of when the problem occurs.

7. Specifications

Connection	PS/2 keyboard connection
Number of keys	104 or 105 (depends on the language)
Multimedia buttons	17 for the number pad + 4 separate keys
Operating system	Windows 95, Windows 98, Windows ME, Windows NT4, Windows 2000
Size (HxWxD)	35 x 459 x 170 mm
Gross weight	1.0 kg

A black rectangular box containing the white letters 'GB' in a bold, sans-serif font.

8. Trust Customer Care Centers

Inhabitants of Great Britain and Ireland should contact:	
	Great Britain Office
From:	Internet www.trust.com
9:30 a.m. -	E-mail customercare.uk@trust.com
5.00 p.m.	Fax +44-(0)1376-514633
	Tel. +44-(0)1376-500000
Inhabitants of Italy should contact:	
	Italian Office
From:	Internet www.trust.com
9.00 a.m. -	E-mail customercare.it@trust.com
1.00 p.m. /	Fax 051-6635843
2.00 p.m. -	Tel. 051-6635947
6.00 p.m.	
Inhabitants of France and North Africa should contact:	
	French Office
From:	Internet www.trust.com
9:00 a.m. -	E-mail customercare.fr@trust.com
5.00 p.m.	Fax +33-(0)1-48174918
	Tel. +33-(0)803-083080
Inhabitants of Germany should contact:	
	German Office
From:	Internet www.trust.com
9:00 a.m. -	E-mail customercare.de@trust.com
5.00 p.m.	Fax 02821-58873
	Tel. 0800-00TRUST (=0800-0087878)
Inhabitants of Spain should contact:	
	Spanish Office
From:	Internet www.trust.com
9.00 a.m. -	E-mail customercare.es@trust.com
5.00 p.m.	Fax +31-78-6543299
	Tel. +31-902 160937
Inhabitants of the Netherlands should contact:	
	Dutch Office
From:	Internet www.trust.com
9:00 a.m. -	E-mail customercare@trust.com
5.00 p.m.	Fax 078-6543299
	Tel. 0800-BELTRUST (=0800-23587878) or 078-6549999
Inhabitants of all other European countries should contact:	
	European Head Office
From:	Internet www.trust.com
9.00 a.m. -	E-mail support@trust.com
5.00 p.m.	Fax +31-78-6543299
	Tel. +31-78-6549999