

Compact Scan USB 19200

ENGLISH

COMPACT SCAN USB 19200

User's manual

Version 1.0

Thank you

Thank you very much for purchasing this product from the Trust range. We wish you hours of fun with it. Please read this manual carefully before using the product.

Registration

Register your purchase now at the Trust Internet site (www.trust.com) and you could win one of the fabulous prizes. The web site is also the place to look for dealer addresses, comprehensive product information, drivers, and FAQ (Frequently Asked Questions) sheets.

Copyright Statement

No part of this manual may be reproduced or transmitted, in any form or by any means, electronic or mechanical, including photocopying, recording, or information storage and retrieval systems, for any purpose other than the purchaser's personal use, without the prior written permission of the manufacturer.

Disclaimer Statement

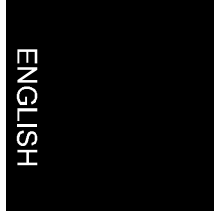
The manufacturer specifically disclaims all warranties, either express or implied, including but not limited to implied warranties of merchantability and fitness for a particular purpose, with respect to the software, the product manual(s) and written materials, and any other accompanying hardware. The manufacturer reserves the right to revise or make improvements to its product at any time and without obligation to notify any person of such revisions or improvements.

In no event shall the manufacturer be liable for any consequential or incidental damages, including any loss of business profits or any other commercial damages, arising out of the use of its product.

All company or product names are trademarks or registered trademarks or service marks of their respective owners.

Contents

- 1. Introduction..... 2**
 - 1.1 Conventions..... 2
 - 1.2 Contents of the package 2
 - 1.3 Minimum system requirements 3
- 2. Safety..... 4**
 - 2.1 General..... 4
- 3. Installing the software 5**
 - 3.1 Windows 98..... 5
 - 3.2 Installing Adobe Acrobat Reader 3.01 9
 - 3.3 Installing TextBridge Classic 2.0 12
 - 3.4 Installing PhotoExpress 2.0..... 15
- 4. Connecting the scanner..... 20**
- 5. Making a scan 21**
 - 5.1 Opening the scan dialog box..... 21
 - 5.2 TWAIN dialog box..... 23
 - 5.2.1 Buttons in the Preview window..... 24
 - 5.2.2 Settings 24
 - 5.2.3 TWAIN settings 25
 - 5.3 Making a scan 28
- 6. Working with TextBridge 29**
 - 6.1 Settings 29
 - 6.2 Scanning with TextBridge Classic..... 30
- 7. Working with Ulead PhotoExpress..... 32**
 - 7.1 Scanning with PhotoExpress 2.0 33
- 8. Maintenance..... 34**
- 9. Troubleshooting..... 35**
 - 9.1 Testing the scanner..... 35
 - 9.2 Troubleshooting..... 38
- 10. Specifications 40**
- 11. Trust Service Centres 41**



1. Introduction

This manual is intended for users of the Compact Scan USB 19200. No previous knowledge is required for installation and use of this product.

If you have any questions after reading this manual, please contact one of the Trust service centres. You will find information on the service centre nearest to you at the back of this manual. You can also visit the Trust website (www.trust.com) for support, comprehensive product information, drivers, and FAQ (Frequently Asked Questions) sheets.

1.1 Conventions

This manual uses the following layout conventions for instructions:

<key>	Requires the user to press a key. The key legend is shown between the angle brackets.
'System'	This is a software-specific term, e.g. a term used by Windows.
[DIR]	Text in this font is to be typed by the user.
(Term)	The text between the parentheses (...) is the English term, e.g. (File), referred to in the accompanying illustration.

Additional information is shown as follows:

Note: *If you connect the scanner to a USB-HUB, the USB-HUB should have its own power supply.*

The examples given assume that the letter "D" has been assigned to your CD-ROM station. If your system uses a different letter for your CD-ROM drive, such as "E", you should replace the drive letter "D" in the text with "E".

1.2 Contents of the package

Check the contents of the package before reading the User's manual. You should have the following items:

- Scanner;
- CD-ROM with drivers and applications;
- CD-ROM with PhotoExpress 2.0;
- This manual.

Please contact your dealer if anything is missing or damaged.

1.3 Minimum system requirements

- Intel Pentium 166MMX CPU
- Free USB port
- 16 MB RAM
- 60 MB free hard disk space
- 4x CD-ROM drive
- Windows 98

ENGLISH

2. Safety

Read the following instructions carefully before use:

2.1 General

1. Do not use this equipment in humid environments like bathrooms, humid cellars, swimming pools, etc.
2. Never insert objects into the openings on the outside of the device as you can come into contact with live electrical components. This can cause fire or give strong electrical shocks.
3. Do not try to repair the equipment yourself. When opening or removing the casing you may accidentally come into contact with live parts. There are other risks as well.
4. If any of the following conditions apply, disconnect the power plug from the mains and have the equipment serviced by qualified service personnel:
 - a) The power lead or plug have become damaged or worn;
 - b) Liquid has entered the equipment;
 - c) The equipment has been dropped and/or the casing has become damaged.
5. Place the equipment so that the cables cannot be damaged.

3. Installing the software

The installation of the product is as follows:

- a. Installation of the driver and software
- b. Installation of the scanner

3.1 Windows 98

Follow the instructions below to install the TWAIN driver.

- 1. Start Windows 98.
- 2. Insert the CD-ROM with drivers and TextBridge into your CD-ROM driver.
- 3. Click on 'Start' and select 'Run' (Figure 1).

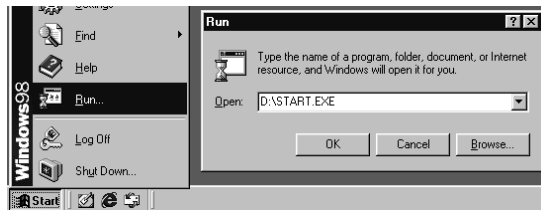


Figure 1: Starting the installation

4. Type [D:\START.EXE] in the command line and click on 'OK' (Figure 2) to start the installation.

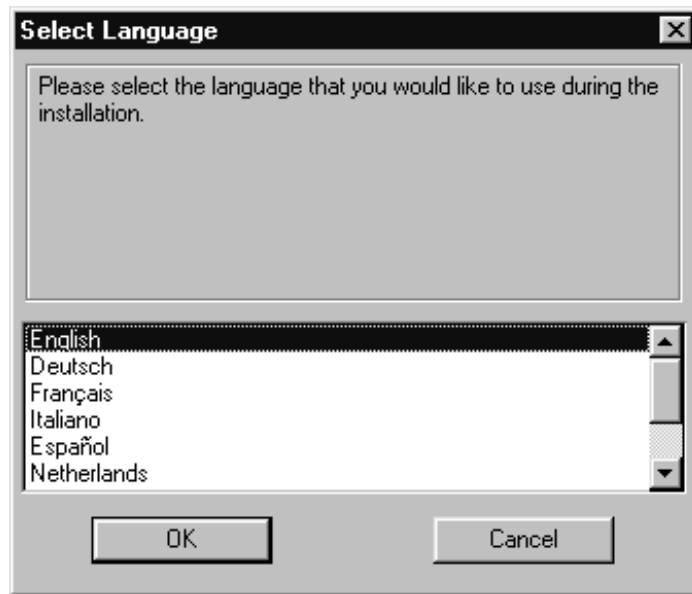


Figure 2: Selecting a language

5. Select your preferred language and click on 'OK' to continue.

- The window that pops up contains "welcome" information. Click on 'Next' to continue. Figure 3 will pop up.

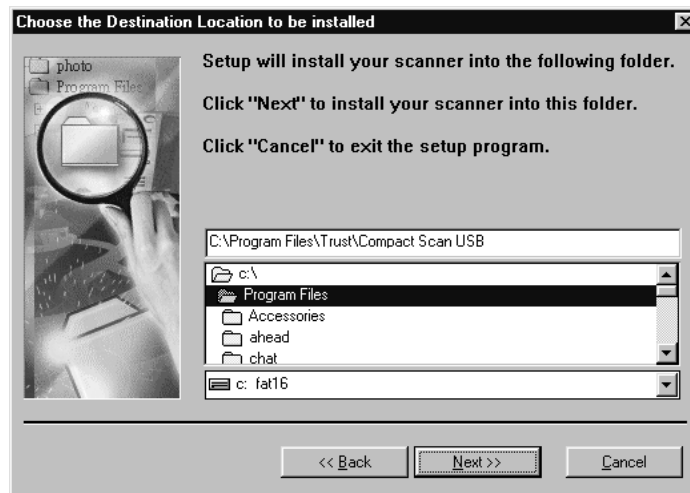


Figure 3: Determining the installation directory

- Click on 'Next' to accept the default directory and to continue with the installation. Figure 4 will pop up.

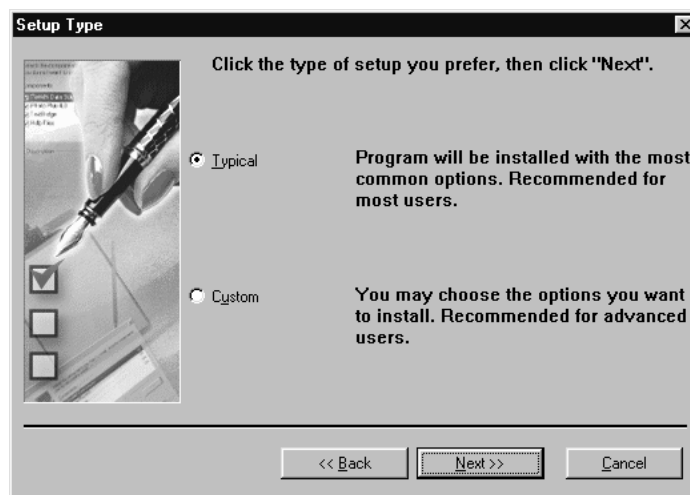


Figure 4: Determining the type of setup

- Select 'Typical' to install all components. Click on 'Next' to continue. The window that pops up will contain an overview of the components to be installed.

ENGLISH

Compact Scan USB 19200

9. Click on 'Start Install' to start the installation. The files will now be copied.

Now proceed to Chapter 3.2 to install Adobe Acrobat Reader.

3.2 Installing Adobe Acrobat Reader 3.01

Adobe Acrobat Reader 3.01 is a program for opening PDF files. The electronic version of the manual can be found in this format on the CD-ROM.

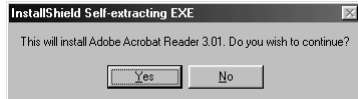


Figure 5: Installing Adobe Acrobat Reader

1. Click on 'Yes' to continue. Figure 6 will pop up.

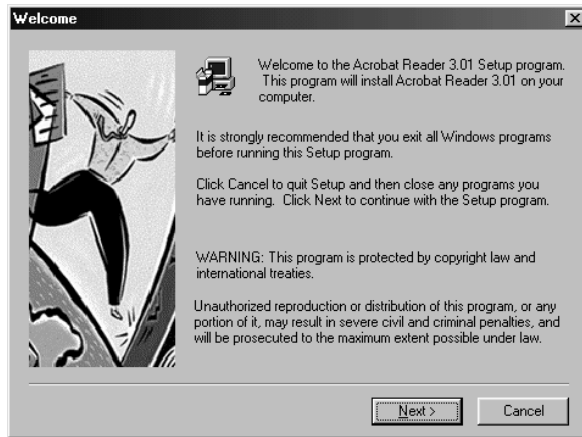


Figure 6: Installing Adobe Acrobat Reader

2. Click on 'Next' to continue. Figure 7 will pop up.

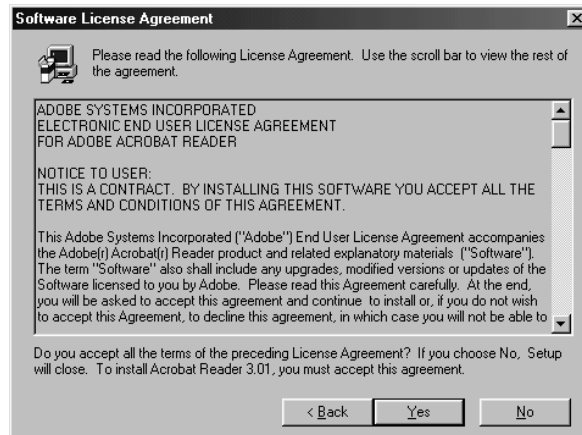


Figure 7: License Agreement

3. Click on 'Yes' to accept the License Agreement (Figure 7) and to continue with the installation.
4. Select the directory for the program installation and click on 'Next' to continue (Figure 8). The files will now be copied. Figure 9 will then pop up.

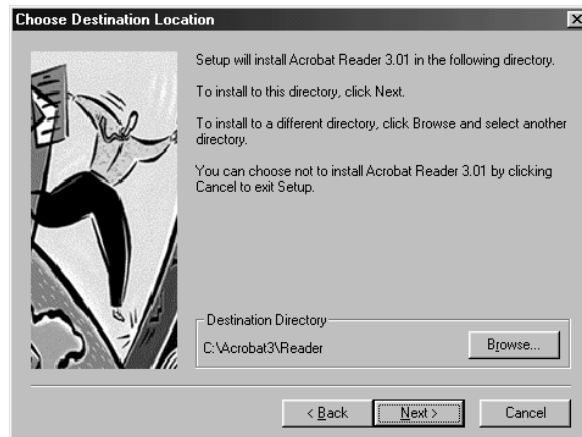


Figure 8: Determining a directory

5. Click on 'Finish' to complete the installation of Acrobat Reader (Figure 9).

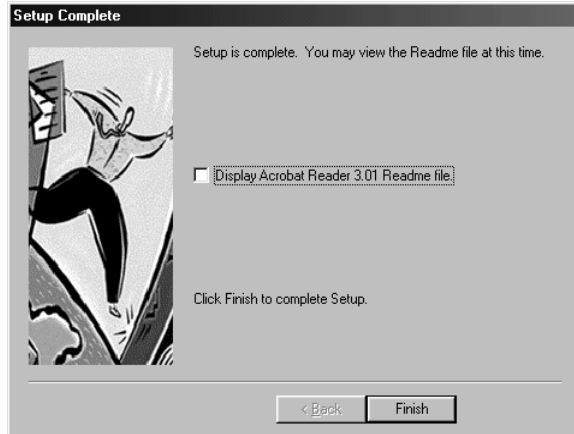
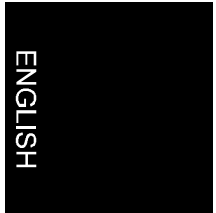


Figure 9: Completing the installation



3.3 Installing TextBridge Classic 2.0

To install TextBridge Classic, follow the instructions below:

1. After installing Acrobat Reader, start the installation of TextBridge Classic. . Figure 10 will pop up.



Figure 10: Installing TextBridge Classic

2. Click on 'Next'. Figure 11 will pop up.

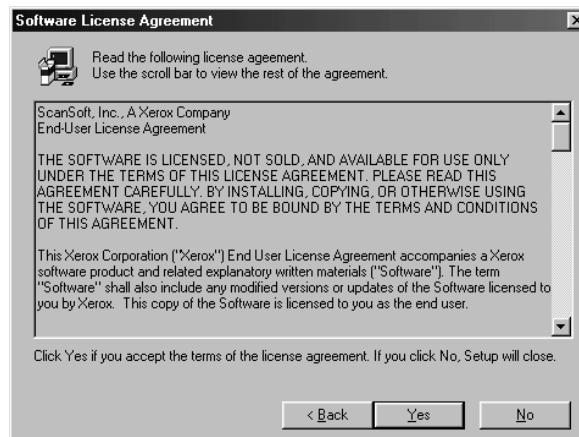


Figure 11: License Agreement

- Click on 'Yes' to accept the License Agreement and to continue with the installation. Figure 12 will pop up.



Figure 12: Selecting the type of installation

- Select 'Custom' (Figure 12). A bullet will be filled in next to your choice.
- Click on 'Next' to continue with the installation. Figure 13 will pop up.
- Click on 'Language packs' to select your preferred languages (Figure 13).

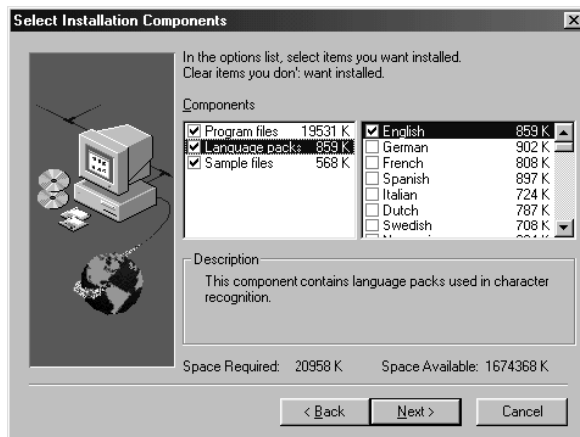
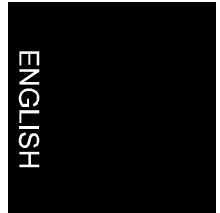


Figure 13: Selecting languages

Note: *Text will only be recognised in the languages you select here. Once the installation is complete, you may install other languages for OCR recognition.*



Compact Scan USB 19200

7. Click on 'Next' to continue installing TextBridge Classic. A new TextBridge registration window will pop up.
8. Click on 'Next'. A product registration window will pop up.
9. Click on 'Cancel'. You will be asked whether you wish to cancel the product registration.
10. Click on 'Yes'. A window will pop up which will inform you that you will receive a reminder about the registration 2 weeks after installing TextBridge.
11. Click on 'OK' to complete the installation of TextBridge.
12. Click on 'OK' to restart your computer.

The installation of TextBridge Classic 2.0 is now completed.

3.4 Installing PhotoExpress 2.0

Ulead PhotoExpress 2.0 is an application for editing scanned images.

1. Insert the CD-ROM with PhotoExpress 2.0 into your CD-ROM drive.
2. The CD-ROM will start automatically. Figure 14 will pop up on your screen. Proceed with step 5. If the CD does not start automatically, start it up manually.
3. Click on 'Start' and select 'Run'.
4. Type [D:\SETUP.EXE] in the command line and click on 'OK' to start the program. Figure 14 will pop up.

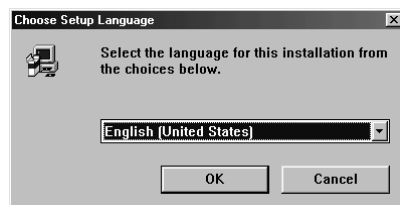


Figure 14: Installing PhotoExpress 2.0

5. Select the language you wish to use for installing Ulead Photo Express 2.0 and click on 'OK' (Figure 15). The welcome window will pop up.
6. Click on 'Next'. The License Agreement window will pop up (Figure 17).



Figure 16: Welcome window

7. Click on 'Yes' to accept the License Agreement (**Figure 17**) and continue with the installation.

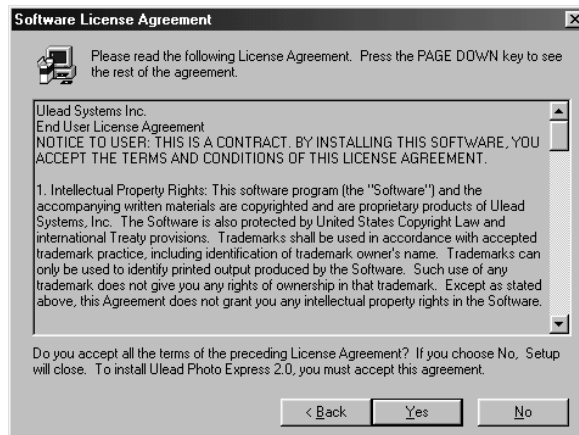


Figure 17: License Agreement

8. Click on 'Next'. Figure 18

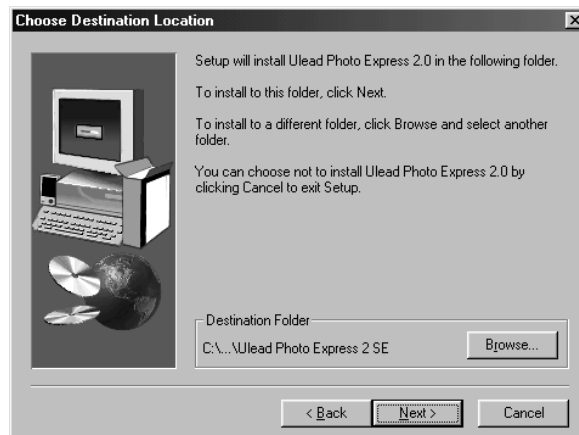


Figure 18: Installing PhotoExpress 2.0

9. Select a background colour (Figure 19). Click on 'Next'.

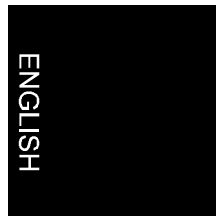


Figure 19: Installing PhotoExpress 2.0

10. Click on 'Next' to select the default program folder (Figure 20).



Figure 20: Installing PhotoExpress 2.0



11. Click on 'Next' (Figure 21). PhotoExpress will now be installed. Figure 22 will pop up after the installation is completed.

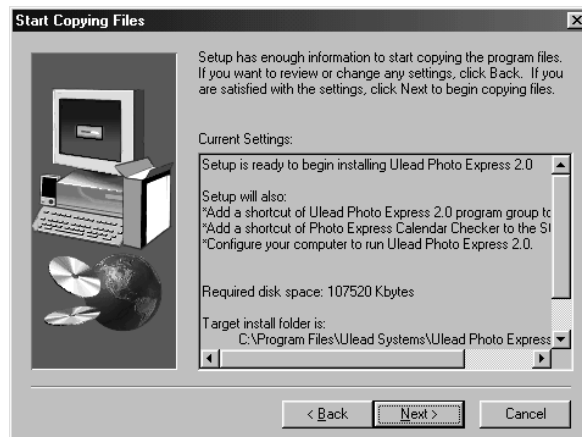


Figure 21: Installing PhotoExpress 2.0

12. Select the option 'Yes, I want... ..on the Desktop' only (Figure 22).
13. Click on 'Next' to continue (Figure 22).

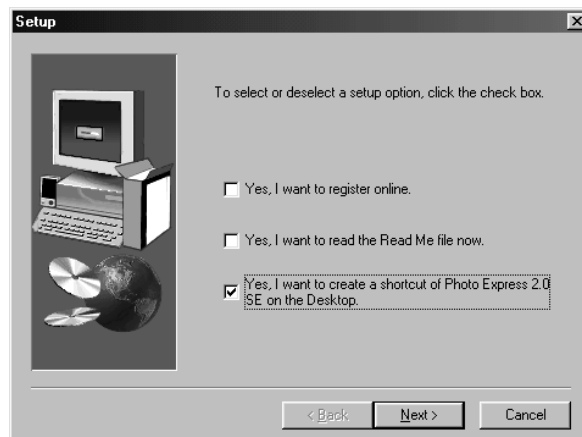


Figure 22: Installing PhotoExpress 2.0

14. Click on 'OK' to complete the installation. Figure 23 will pop up.
15. Click on 'Finish' to complete the installation. Depending on your choice, either your computer will restart or you will return to Windows.



Figure 23: Completing the installation

The installation of the TWAIN driver and applications is now complete. If you have a modem, you can register Ulead Photo Express 2.0 electronically. Please refer to the software manual (supplied on CD-ROM).

ENGLISH

4. Connecting the scanner

You can connect the scanner to the computer's USB port after installing the TWAIN driver and the applications (see previous chapter).

1. Start Windows 98.
2. Remove the scanner from the packaging.
3. Insert the rectangular USB plug into the USB port on your computer. A window with 'New hardware detected' appears on the monitor.
4. The driver for the scanner will be automatically installed.

You may now use the scanner. The TWAIN functions will be explained in the next chapter.

5. Making a scan

You can make a scan in 2 ways with this scanner. The first method, by means of the scan dialog box, is quick and easy. The second method, by means of the TWAIN dialog box, offers you more options.

5.1 Opening the scan dialog box

You can open the scan dialog box by:

1. Opening and closing the document cover. Select 'Scan Dialog Box'.
2. Double-clicking on the icon in the taskbar.
3. Starting the program from the start menu.

The window 'Trust Compact Scan USB 19200 Cover Sensor' will pop up on the screen after a short while (Figure 24). Table 1 gives a description of the functions offered by this program.

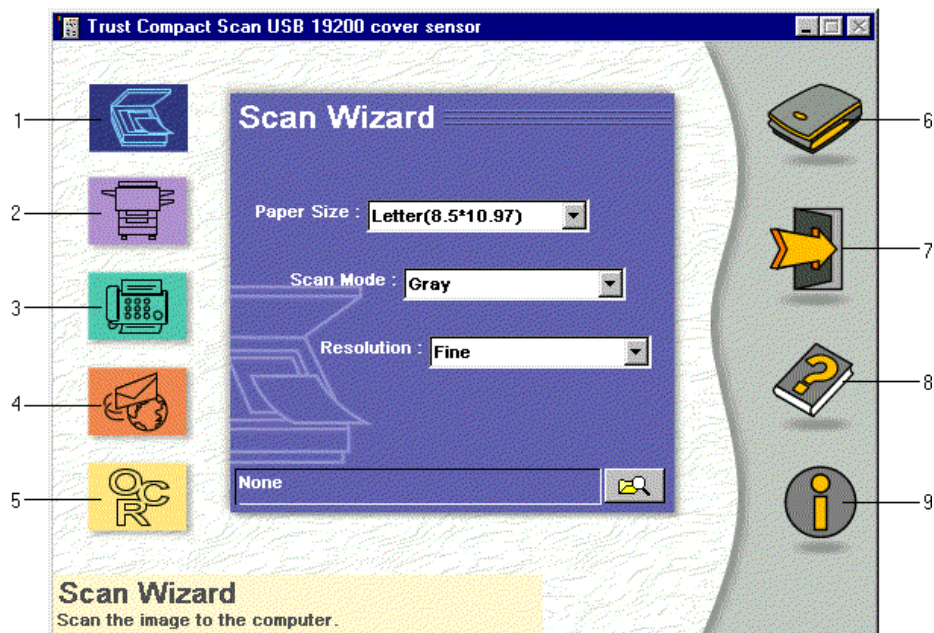


Figure 24: Cover sensor program

Compact Scan USB 19200

Item	Description	Function
1	Scan	Scans the picture to the computer.
2	Copy	Copies the image or the document (printer required).
3	Fax	Scans and sends the image or document (fax modem or printer required).
4	E-Mail	Scans and sends the image or document to the Internet (modem and Internet account required).
5	OCR	Converts the image document into a text file.
6	Scan	Scans the image or document and transfers it to the selected application (software, printer, fax, e-mail, OCR).
7	Exit	Closes the program.
8	Help	For consulting the on-line help for all scanner and software functions.
9	Info	Displays product information.

Table 1: Cover sensor program functions

5.2 TWAIN dialog box

You can open the TWAIN dialog box by scanning from a TWAIN compatible application.

1. Start the program that supports TWAIN (PhotoExpress 2.0, for example).
2. Open the Acquire command from the file menu and click on 'Select Source'. The 'Select Source' dialog box will be opened.
3. Select 'Trust Compact Scan USB 19200' in the 'Select Source' dialog box. If only 1 source is available it will be selected automatically.
4. Click on the 'Select' button. The dialog box for the source selection will close automatically.
5. Return to the file menu and click on 'Acquire', usually located next to the 'Select' command. The TWAIN dialog box will pop up (Figure 25).

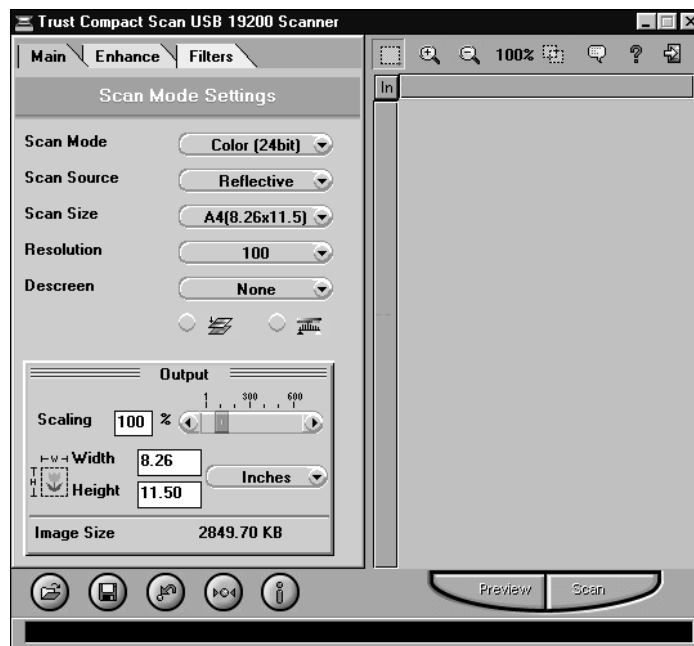


Figure 25: TWAIN dialog window

The TWAIN window consists of two sections. The left-hand side contains the TWAIN settings. The right-hand side (Preview window) shows a preview of the scanned image.

5.2.1 Buttons in the Preview window

There are a number of different buttons in the Preview window.

Button	Function
Cropping Tool	Selects an area in the preview window.
Zoom	Increases or decreases the size of the image in the preview window.
Batch scan	Scans several areas in one pass
Language	Sets the language of TWAIN shown on the screen.
Help	Displays information about the scanner and software functions.
Exit	Closes the TWAIN dialog window.
Preview	Shows an example of the scan
Scan	Scans the selected area using the selected settings

Table 2: Preview window functions

5.2.2 Settings

You can save, load the settings etc. using the buttons at the bottom left in the TWAIN window.

Load	Loads the settings
Save	Saves the settings
Previous	Loads the previous settings
Reset	Returns to the standard settings
Info	Displays information about the settings

Table 3: Settings

5.2.3 TWAIN settings

The screen with the TWAIN settings contains a number of folders. A folder can be selected by clicking on the tab with the mouse.

5.2.3.1 Main folder

The main folder contains the settings that are necessary to specify the scan parameters.

Function	Options	Description
Scan mode	LineArt	<ul style="list-style-type: none"> Scans text. Scans black and white images. Use of OCR software.
	Grey	<ul style="list-style-type: none"> Scans images with a grey tint. Scans colour images that need to be converted to grey tints.
	Color 24 of 48 bits	Scans images in colour.
Scan source	Respect	Scans non-transparent images (e.g. a photograph).
Scan size	A4	Sets scan size to 21 x 29.6 cm
	A5	Sets scan size to 14.8 x 21 cm
	Letter	Sets scan size to 8.5 x 11 inch
	Custom	You determine the area to be scanned in the selection window.
Resolution	50 - 19200	Selects set resolutions.
	Custom	Choose yourself a resolution between 50 and

Function	Options	Description
		19200 DPI (only whole numbers).
Descreen	None	No greyscale pattern is set.
	Newspaper	Sets a greyscale pattern for scanning a newspaper.
	Magazine	Sets a greyscale pattern for scanning a magazine.
	Art Magazine	Sets a greyscale pattern for scanning an art magazine.
Colour calibration	On	Displays the real colours of the image.
	Off	Displays a larger scale of colours. The image may differ from the original.
Colour balance	Maintains the colour balance between the lightest and darkest colours.	
Scale	Increases or decreases the format of the image.	
Height and width	Displays the height and width of the selected area.	
Image format	Displays the computer memory or disk space necessary to scan/save the selected area.	

Table 4: Overview of the functions in the main folder

5.2.3.2 Enhance folder

This folder contains settings that you can apply to the image of the original before you make the final scan.

This folder also contains 2 small images of the preview scan. All changes made in this folder are visible in the right-hand window.

Function	Option	Description
Program selector	Master	The equal addition or reduction of all the colours.
	Red, Green or Blue	The addition or reduction of the quantity of the chosen colour.
Brightness	Sets the brightness of the image.	
Contrast	Sets the contrast of the image.	
Gamma	Sets the brightness for the light, middle and darker areas separately.	
Histogram	Shows the image's brightness distribution	

Table 5: Overview of the functions in the Enhance folder

5.2.3.3 Filters folder

This folder contains settings that you can use to get special effects. This folder also contains 2 small images of the preview scan. The selected effect is visible in the right-hand window.

Option	Description
None	Standard setting. No filter is used.
Soften	Softens or weakens the image.
Sharpen	Gives more details in a hazy image.
Invert	Converts colours into their complement.
Mirror	Horizontal mirroring of the image.
Relief	Sinks or raises elements in the image.
Unsharp mask	Looks for corners in the image and emphasises them.

Table 6: Overview of the functions in the 'Filters' folder

5.3 Making a scan

Proceed as follows to make a scan:

1. Position the image or document face downward on the glass plate.
2. Using the mouse, click on the 'Prescan' button.
3. Select the desired scan mode (colour, greyscale, black-and-white).
4. Using the mouse, select the scan area in the prescan window or select a default size from the Scan Size menu.
5. Set the resolution; 300 DPI will be sufficient for most purposes.
6. Using the mouse, click on the 'Scan' button to start the scan. The results are copied to the currently active application.

Note: The scan process cannot be interrupted.

6. Working with TextBridge

TextBridge is a program for scanning text and converting it to a document format in order to be edited using a word processor. A detailed manual can be found on the CD-ROM.

ENGLISH

6.1 Settings

1. Start TextBridge.
2. Click on 'File'.
3. Click on 'Select Scanner...'. A new window will pop up.
4. Next, select 'Trust Compact Scan USB 19200'.
5. Click on 'Ok'.
6. You can now select the language of the document to be scanned. Click on 'Process'.
7. Click on 'Settings'. A new window will pop up.
8. Click on the 'Processing' tab.
9. Select the language in the 'Process With' box by clicking on the triangle and selecting the language (Figure 26).

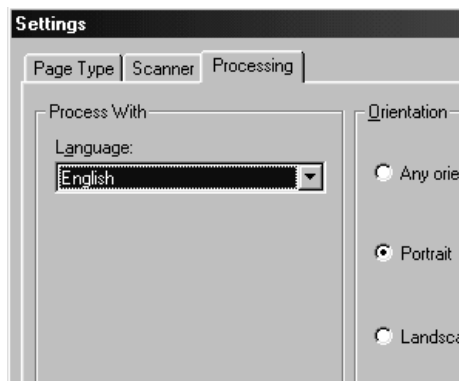


Figure 26: Selecting the language

10. Click on 'Ok'.
11. You have now completed the TextBridge Classic settings. Continue with Chapter 6.2.

6.2 Scanning with TextBridge Classic

Note: To show some non-English language characters, e.g. in Polish, 'Multi-language Support' should be selected in Windows. See the Windows 'Help' feature for more information. You should also make sure your application is capable of showing non-English language characters.

1. Position the document to be scanned on the scanner.
2. Click on the button marked 'Auto Process' (Figure 27). A new window will be opened.



Figure 27 Auto Process button

3. Select the document type.
4. Set 'Page Source' to 'Scanner' by clicking with the mouse (Figure 28).

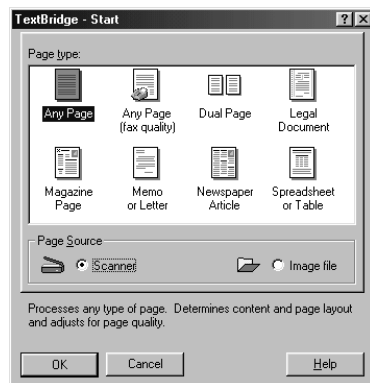
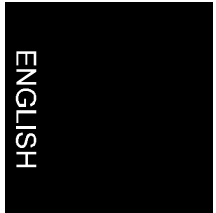


Figure 28: Selecting 'Page Source'

5. Click on 'OK'. The TWAIN dialog box (Figure 25) will be opened.
6. Click on 'Prescan' to make a test scan.
7. Using the mouse, select the area you wish to scan.
8. Set 'Scan Mode' to 'BW' (black-and-white).
9. Set 'Destination' to 'Application'.
10. Set the resolution to 300 dpi.
11. Click on 'Scan'.
12. After completing the scan, TextBridge will start the OCR process of the scanned document and will ask you if you wish to scan additional documents.
13. Click on 'More Pages' or 'Other side' to scan more pages.
14. Click on 'No More' to stop scanning. A window is displayed asking for a location to save the scanned text in.
15. Under 'File Name', type a name for the text produced.
16. Under 'Save as Type' select the format for the file. Select a file format that will be recognised by your word processor application. If in doubt, select 'ASCII Std. (*.txt)'.
17. Click on 'Save' to save the file. This completes the OCR process.
18. Close TextBridge Classic.

In order to edit the scanned text you have just saved to disk, you need a word processing program. Start the program and point it to the name you used to save the file in step 14.

TextBridge includes a number of advanced options. Refer to the on-line help and the documentation on the CD-ROM for more information.



7. Working with Ulead PhotoExpress

Ulead PhotoExpress 2.0 is a drawing and editing program with a large number of options for working with photographed images.

Follow the instructions below for setting and using PhotoExpress 2.0.

Note: *The manual can be found on the CD-ROM supplied with the device; the program also contains a comprehensive help function.*

1. Connect the scanner to the computer. See Chapter 4.
2. Start Photo Express 2.0 by double-clicking on its icon on the screen. The program will start up. Figure 29 will pop up.



Figure 29: TWAIN settings

3. Select 'Flatbed scanner' for the 'Trust Compact Scan USB 19200' device.
4. Click on 'OK' to continue. If you have installed several devices that use the TWAIN interface, you will also need to select the appropriate device for these as well.

Your scanner has now been set for this application.

7.1 Scanning with PhotoExpress 2.0

To make a scan with PhotoExpress 2.0, follow the instructions below:

1. Click on 'Get' (number 1, Figure 30).
2. Click on 'Scanner' (number 2, Figure 30).
3. In the 'Select Data Source list', select the 'Trust Compact Scan USB 19200 Scanner' (number 3, Figure 30).
4. Select 'Apply Post Processing'. You can adjust your image after scanning using the following options: 'Straighten & Rotate', 'Crop', 'Brightness & Contrast' and 'Color Balance' (number 4, Figure 30).
5. Select 'Open to workspace' to transfer the scanned image to the application or select 'Save to Album' to add the scanned image to a photograph album (number 5, Figure 30).
6. Enter a file name and select the appropriate file type (number 6, Figure 30).
7. Click on 'Acquire' to scan the image (number 7, Figure 30). The TWAIN window will pop (Figure 25).



Figure 30: Ulead PhotoExpress

8. Maintenance

Clean the glass plate regularly with a soft, clean cloth to remove dust and dirt.

A clean glass plate is important since any dirt will show up in the scanned image.

Note: *Do not use any aggressive liquid, liquid cleaners or aerosols to clean the scanner or the glass plate.*

9. Troubleshooting

9.1 Testing the scanner

A test program was installed at the same time as the TWAIN driver and the applications. This test program provides a simple means of checking the correct operation of the basic scanner features.

Start the test program (Start | Programs | Trust Compact Scan USB 19200 | Test Program). The test program will appear on the screen (Figure 31).

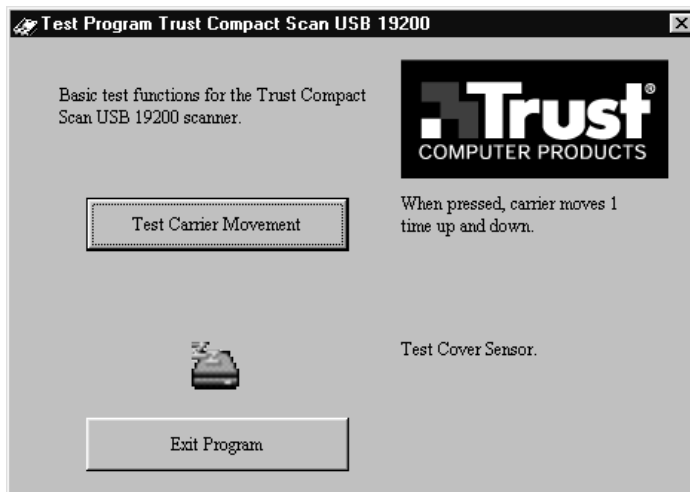


Figure 31: Test program

This test program enables you to test the scanner easily and quickly.

There is a second test program in the Control Panel. Follow the steps given below to start the program.

1. Click on 'Start'.
2. Select 'Settings'.
3. Next, select 'Control Panel'.

4. Double click on the icon 'Scanners and cameras'. Figure 32 pops up.

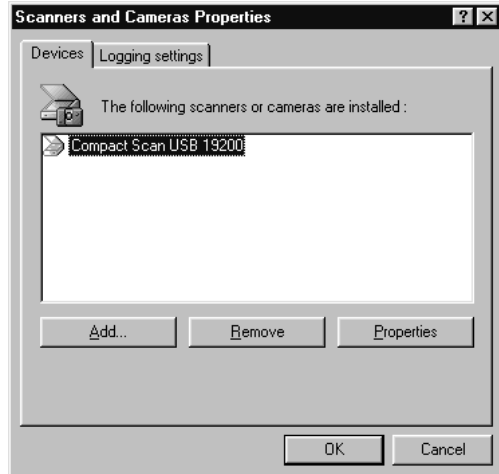


Figure 32: Scanner properties

5. Select 'Compact Scan USB 19200' and click on 'Properties'.



Figure 33: Scanner properties

6. Click on 'Test Scanner or Camera'. The scanner's light unit will now move. The LEDs in the light unit will light up a couple of times. This process lasts for approximately one minute.
7. When completed, the message 'Your scanner or camera successfully completed the diagnostic test' appears if the scanner is working correctly.

If one or more of the program's functions do not work, check the points given below to solve the problem.

ENGLISH

9.2 Troubleshooting

Problem	Possible cause	Solution
The computer does not recognise the scanner.	The scanner may not be connected to the computer correctly.	Check whether the scanner has been connected to the USB port correctly (Chapter 4).
'Flatbed Scanner not ready' error message is displayed.	The scanner driver has not been installed correctly.	Reinstall the TWAIN driver.
	The interface cable has not been connected properly.	Connect the interface cable properly (Chapter 4). Restart the computer and scanner.
Scan command is not carried out.	Scanner is not connected to the computer properly.	Check whether the scanner is connected properly (Chapter 4).
Scan is too dark.	Monitor set too dark.	Adjust the monitor's brightness.
	Number of colours of your display adapter is set too low.	Set your display adapter to a minimum of 65,535 colours (16 bit).
Low-quality scan.	Resolution too low.	Set resolution to 600 DPI.
	Number of colours of your display adapter is set too low.	Set your display adapter to a minimum of 65,535 colours (16 bit).
	Glass plate dirty. Dirt on the glass plate shows up on the scanned image.	Thoroughly clean the scanner glass (See Chapter 8).
Scanner operates very slowly.	High resolution setting.	For normal purposes, a maximum resolution of 600 DPI should suffice. Use higher resolutions for small originals only.
	Insufficient memory.	You need a minimum of 16MB RAM. Recommended value is 32 MB.

Problem	Possible cause	Solution
No response from scanner.	'Stop scanning' button has been pressed (cover sensor program).	Close Windows and switch off your computer and scanner. Switch them back on again.
Error message during scan.	Hard disk full.	You need 3 times the space required by the scanned image as free space on your hard disk drive. The amount of disk space required can be viewed in the TWAIN window. Free up disk space or select a lower resolution.
	Resolution set too high.	For normal purposes, a maximum resolution of 600 DPI should suffice. Use higher resolutions for small originals only.

ENGLISH

Table 7: Troubleshooting

Visit the Internet site (www.trust.com) to see the FAQ and the latest version of the driver.

If you still have problems with your scanner after trying these solutions, please contact your dealer.

Please have the following information ready:

1. Operating system
2. Hardware configuration
 - CPU (MHz)
 - RAM (MB)
 - Free hard disk space (MB)
 - Display adapter: resolution and number of colours
3. Scanner settings
 - Scan mode (colour, grey, black-and-white)
 - Resolution (DPI)
 - Destination (application, printer, etc.)
 - Size:
4. Version of TWAIN program (see readme.txt on the CD-ROM)
5. Name and version of the application software

10. Specifications

Type	Flatbed, CIS scanner
Optimal resolution (H x V)	600 x 1.200 DPI
Maximum resolution	19.200 x 19.200 DPI
Scan method	Single Pass
Scan modes	<ul style="list-style-type: none">• 1 bit black and white• 16 bit greyscale• 48 bit colour
Document size	216 x 297 mm (A4) 8.5 x 11.7 inch (Letter)
Interface	USB
Dimensions (B x H x D)	410 x 36 x 268 mm
Weight (excl. packaging)	1.9 Kg

Table 8: Specifications

11. Trust Service Centres

If you have any questions after reading this manual, please contact one of the Trust Service Centres.

Keep the following in mind, however:

- If you have any questions regarding the use of a product or if you are looking for the latest drivers, you can find this information at the Trust web site (www.trust.com). The majority of the FAQ's (Frequently Asked Questions) are listed here. You can also download the latest drivers directly from the site.
- If you are unable to find the information you need at the Trust web site or if you are unable to access the site, please contact your nearest Trust Service Centre.
- Keep in mind that the waiting time may be longer if you call between 12:00 AM and 2:00 PM.
- **DO NOT** return any products to the Trust Support Centre addresses below. You may return the products via your Trust dealer.

ENGLISH

Compact Scan USB 19200

Country:	Contact:
UK Ireland	UK Office Internet www.trust.com E-mail trustuk@globalnet.co.uk Mail Aashima Distribution U.K. Ltd. Trust Support PO Box 5277 Witham CM8 3XU United Kingdom Fax +44-(0)1376-514633 Phone +44-(0)1376-500000 (from 9:30 AM until 5:00 PM)
Italy	Italian Office Internet www.trust.com E-mail trustdp@tin.it Mail Aashima Italia s.r.l. Trust Support Via dei Pignattari, 174 Blocco 37 40050 Centergross Funo di Argelato (BO) Italia Fax 051-6635843 Phone 051-6635947 (from 9:00 AM until 5:00 PM)
France North Africa	French Office Internet www.trust.com E-mail support.trust@aashima.fr Mail Aashima France sarl Trust Support BP 50002 95945 Roissy C.D.G. France Fax +33-(0)1-48174918 Phone +33-(0)1-48174931 (from 9:00 AM until 5:00 PM)
All other Countries	European Head Office Internet www.trust.com E-mail support@aashima.nl Mail Aashima Technology B.V. Trust Support P.O. Box 8043 3301 CA Dordrecht The Netherlands Fax +31-(0)78-6543299 Phone +31-(0)78-6549999 (from 9:00 AM until 5:00 PM) For Germany only: Fax +49-(0)2821-58873 Phone 0800-00TRUST (from 9:00 AM until 5:00 PM) (=0800-0087878)