

# **TRUST GEFORCE 256 32MB AGP**

**Instruction manual**

Version 1.0

## Thank you

Thank you very much for purchasing this product from the Trust range. We wish you hours of fun with it. Please read this manual carefully before using the product.

## Registration

Register your purchase now at the Trust Internet site ([www.trust.com](http://www.trust.com)) and you could win one of the fabulous prizes. The website is also the place to look for dealer addresses, comprehensive product information, drivers and FAQ's (Frequently Asked Questions).

## Copyright statement

No part of this instruction manual may be reproduced or transmitted, in any form or by any means, electronic or mechanical, including photocopying, recording, or information storage and retrieval systems, for any purpose other than the purchaser's own personal use, without prior written permission from the manufacturer.

## Disclaimer statement

The manufacturer specifically disclaims all warranties, either express or implied, including, but not limited to, implied warranties for the marketability and suitability for a particular purpose, with respect to the software, the accompanying product manual(s) and written material, and all other accompanying hardware. The manufacturer reserves the right to revise or make improvements to its product at any time and without obligation to notify any person of such revisions or improvements.

In no event shall the manufacturer be liable for any consequential or incidental damages, including any loss of business profits or any other commercial damages, arising out of the use of its products.

All company or product names are trademarks or registered trademarks of their respective owners.

## Contents

<b>1. Introduction</b> .....	<b>2</b>
1.1 Contents of the package .....	2
<b>2. Safety</b> .....	<b>3</b>
2.1 Minimum system requirements .....	3
2.2 Installing the Trust GeForce 256 32MB AGP .....	3
<b>3. Software installation</b> .....	<b>4</b>
3.1 Installation of the driver in Windows 95.....	4
3.2 Installation of the driver in Windows 98.....	6
3.3 Installation of the driver in Windows NT4.....	8
3.4 Installation of the driver in Windows 2000.....	8
3.5 Installing DirectX7 .....	11
<b>4. Changing the settings</b> .....	<b>12</b>
<b>5. Troubleshooting</b> .....	<b>15</b>
<b>6. Specifications</b> .....	<b>16</b>
<b>7. Trust Service Centres</b> .....	<b>17</b>

A black rectangular box containing the white letters 'GB' in a bold, sans-serif font.

## 1. Introduction

This manual is intended for users of the Trust GeForce 256 32MB AGP. No prior knowledge is necessary to install and use this product.

**If you have any questions after reading this instruction manual, please contact one of the Trust Service Centres. You can find your nearest Service Centre at the end of this manual. You can also visit the Trust website ([www.trust.com](http://www.trust.com)) for support, detailed product information, drivers and FAQ's (Frequently Asked Questions).**

The following conventions have been used in this manual to indicate instructions:

- <key>** Here you should press a key. The name of the key is given between brackets.
- 'System'** This is a specific term used in a program. These are the terms used by, for example, Microsoft Windows 95.
- [DIR]** Key in the text shown in square brackets [...].
- (term)** The text between the parentheses {...} is the English term, e.g. (File) used in the figure referred to.

Additional information will be shown as follows:

**Note:** *Turn off the computer before connecting the product.*

### 1.1 Contents of the package

Please check the contents of the package before reading the instruction manual. It should contain the following:

- Trust GeForce 256 32MB AGP VGA card
- CD-ROM containing the drivers, applications and instruction manual
- The quick installation manual

Please contact your dealer if anything is missing or damaged.



## 2. Safety

Before using the product, please read the following instructions carefully.

1. Computer components are sensitive to static electricity. You can discharge yourself by touching the computer casing.
2. Switch off the computer and remove the plug from the wall socket before opening the computer.
3. Make sure that the components you are adding to your computer are compatible with your system.
4. Hardware installation.

### 2.1 Minimum system requirements

- Pentium II processor
- 64 MB RAM
- Windows 95 OSR2, 98, 2000 or NT4 (Service Pack 3)
- Free AGP slot
- 25 MB free hard disk space
- 4x CD-ROM drive

### 2.2 Installing the Trust GeForce 256 32MB AGP

**Note:** *If another VGA card (the card you connect the monitor to) is still in your system, then you should remove this before you install the Trust GeForce 256 32MB AGP.*

1. Turn off your PC.
2. Remove the plug from the wall socket.
3. Remove the computer casing (if necessary, read your computer's instruction manual).
4. Remove the metal cover plate or your old VGA card from the AGP slot.
5. Insert the Trust GeForce 256 32MB AGP into the AGP slot (brown colour) and screw the card firmly into place.
6. Close the PC.
7. Connect the monitor cable.
8. Turn on the computer.

### 3. Software installation

#### 3.1 Installation of the driver in Windows 95

**Note:** *The driver for the Trust GeForce 256 32MB AGP only works in Windows 95 OSR2 with an installed USB supplement. See your computer's instruction manual for more information.*

1. Start Windows 95.
2. A 'Standard PCI Graphics Adapter (VGA)' will be automatically detected. Click on 'Next' (see figure 1).



**Figure 1: Automatic detection in Windows 95**

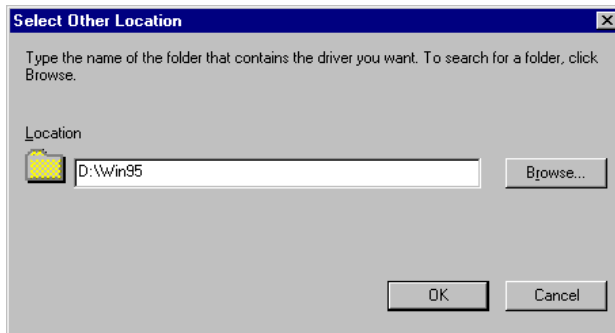
3. On the next screen, click 'Other locations' (see figure 2).



**Figure 2: Installation in Windows 95**

4. Insert the CD-ROM with the drivers into your CD-ROM drive.

5. Give the location as [D:\Win95] and click on 'OK' (see figure 3).



**Figure 3: Installation in Windows 95**

6. The driver for the 'Trust GeForce 256 32MB AGP' will be found. Click 'Finish' to complete the installation (see figure 4).



**Figure 4: Installation in Windows 95**

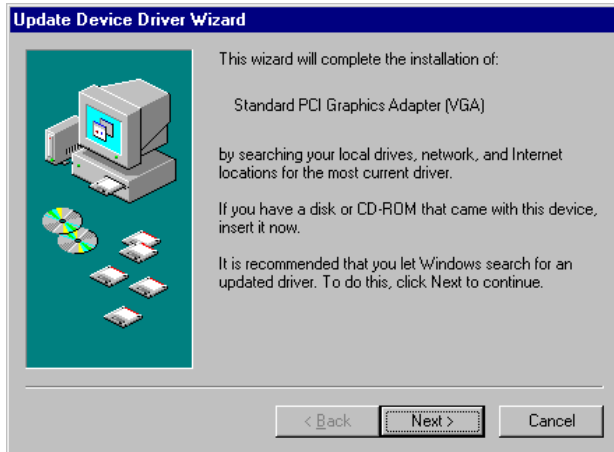
Windows may request the driver again. If it does, give the location as [D:\Win95] again.

7. Restart your computer.

You have now completed the installation of the driver. Continue to chapter 3.5 for the installation of DirectX7.

### 3.2 Installation of the driver in Windows 98

1. Start Windows 98.
2. A 'Standard PCI Graphics Adapter (VGA)' will be automatically detected. Click on 'Next' (see figure 5).



**Figure 5: Automatic detection in Windows 98**

3. Select Windows to search for the best driver. Click on 'Next' (see figure 6).



**Figure 6: Installation in Windows 98**

4. Insert the CD-ROM with the drivers into your CD-ROM drive.

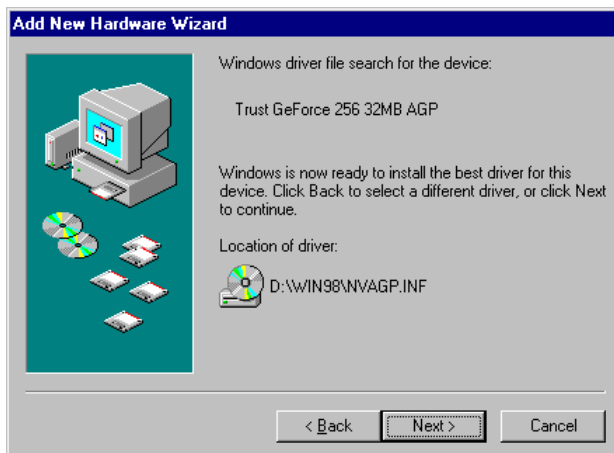


- Select Windows to search in a specific location. Give the location as: [D:\WIN98]. Click on 'Next' (see figure 7).



**Figure 7: Installation in Windows 98**

- The driver will be found. Click on 'Next' (see figure 8). The driver will be installed.



**Figure 8: Installation in Windows 98**

- Click 'Finish' to complete the installation (see figure 9).



**Figure 9: Installation in Windows 98**

8. Restart your computer.

You have now completed the installation of the driver. Continue to chapter 3.5 for the installation of DirectX7.

### 3.3 Installation of the driver in Windows NT4

**Note:** You must have at least Service Pack 3 installed before you install the Trust GeForce 256 32MB AGP.

1. Start Windows NT and log in as 'Administrator'.
2. Go to 'Start - Settings - Control Panel' and then double click on the 'Display' icon. Click on the 'Settings' tab.
3. Click on 'Monitor' and then click on 'Change'.
4. Insert the CD-ROM with the drivers into your CD-ROM drive.
5. Click on 'Disk' and give the location as [D:\WinNT4]. Click on 'OK'.
6. Select the 'Trust GeForce 256 32MB AGP'. Click on 'OK'.
7. Follow the on-screen instructions to complete the installation.
8. Restart your computer.

Your system is now ready for use.

### 3.4 Installation of the driver in Windows 2000

1. Start Windows 2000 and log in as 'Administrator'.
2. The new hardware will be detected. Click on 'Next' (see figure 10).



Figure 10: Automatic detection in Windows 2000

3. Select Windows to search for a suitable driver. Click on 'Next' (see figure 11).



**Figure 11: Installation in Windows 2000**

4. Select Windows to search in a specific location. Click on 'Next' (see figure 12).



**Figure 12: Installation in Windows 2000**

5. Insert the CD-ROM with the drivers into your CD-ROM drive.

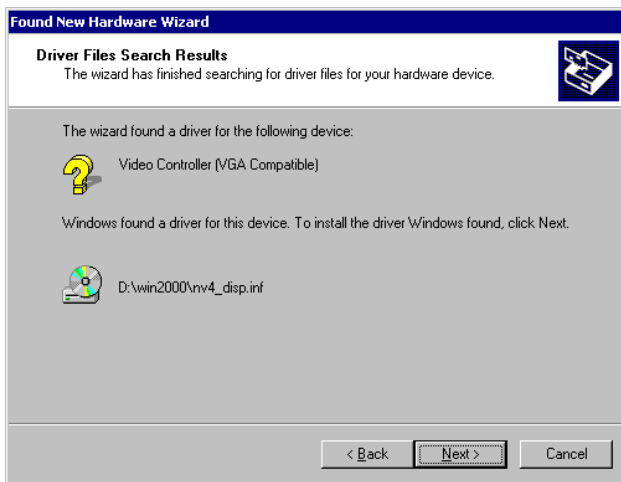


- In the next screen, give the location as: [D:\Win2000]. Click on 'OK' (see figure 13).



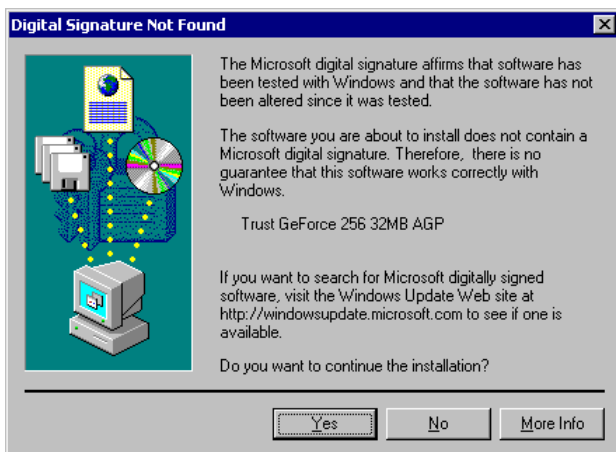
**Figure 13: Installation in Windows 2000**

- The driver will be found at the location given. Click on 'Next' (see figure 14).



**Figure 14: Installation in Windows 2000**

- Windows 2000 will display a message stating that the driver's digital signature has not been found. Due to the fast development of computer technology, it is not always possible to have the newest drivers signed in time. Click on 'Yes' to accept and continue with the installation (see figure 15).



**Figure 15: Installation in Windows 2000**

**Note:** Make sure that Windows 2000 allows non-signed drivers to be installed. You can set this by going to 'Control Panel - System' and clicking the 'Hardware' tab. In this tab, click on 'Driver Signing...' and select 'Warn'.

- Figure 16 will be displayed after the driver has been installed. Click on 'Finish' to complete the installation.



**Figure 16: Installation in Windows 2000**

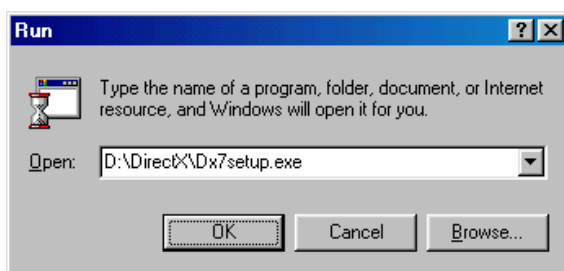
Your system is now ready for use.

### 3.5 Installing DirectX7

You must install DirectX7 to have the optimal 3D functions of the Trust GeForce 256 32MB AGP in Windows 95 and 98.

**Note:** *DirectX7 does not work in Windows NT4.*

- Click on the 'Start' button in the taskbar and select 'Run'.
- In the command line, type [D:\DirectX\Dx7setup.exe] to install DirectX7. Next, click on 'OK' (see figure 17). Follow the on-screen instructions.



**Figure 17: Installing DirectX7**

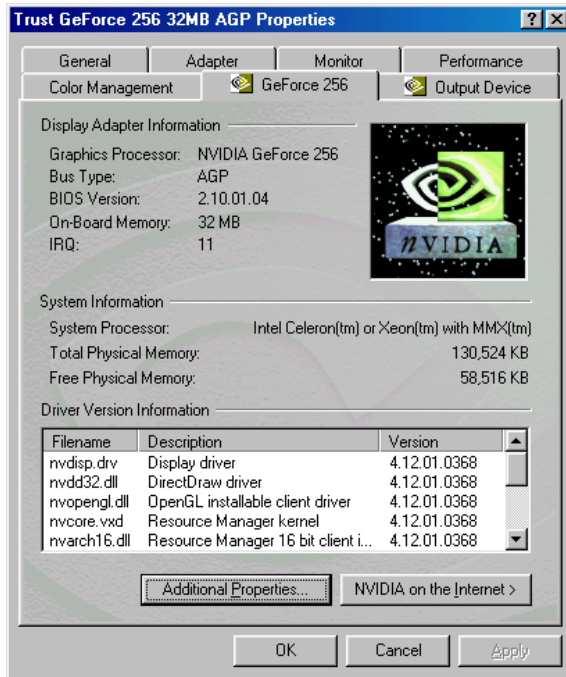
- Restart your computer.

Your system is now ready for use. See chapter 4 to change the settings of the Trust GeForce 256 32MB AGP.

## 4. Changing the settings

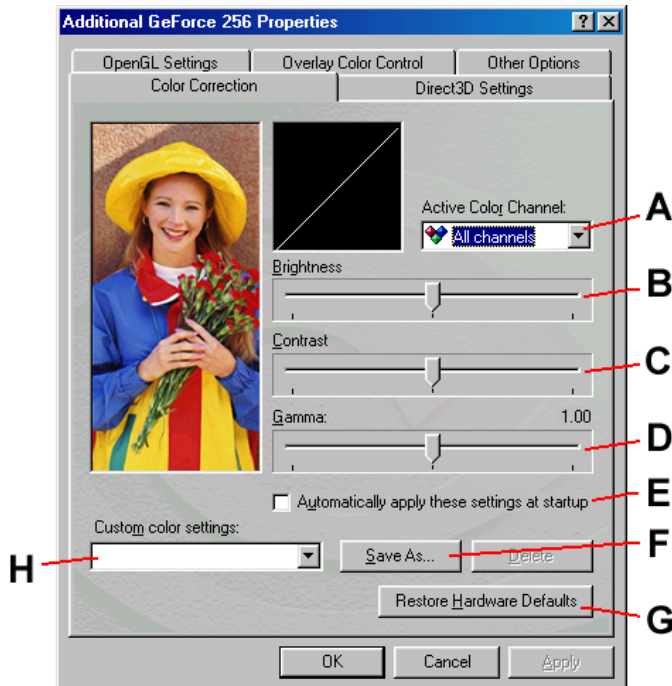
**Note:** These settings are only possible in Windows 98. Only change the settings if it is necessary.

1. Go to 'Start - Settings - Control Panel'.
2. Double click on the 'Display' icon.
3. Click on the 'GeForce 256' tab. In Windows 98, the 'GeForce 256' tab can be found by clicking on 'Settings - Advanced Properties' (see figure 18).



**Figure 18: Changing the settings**

4. Click on 'Additional Properties. Figure 19 will appear.



**Figure 19: Changing the colour settings**

5. You can alter various colour settings using the 'Color Correction' tab (see figure 19). See the table below for all the possible options.

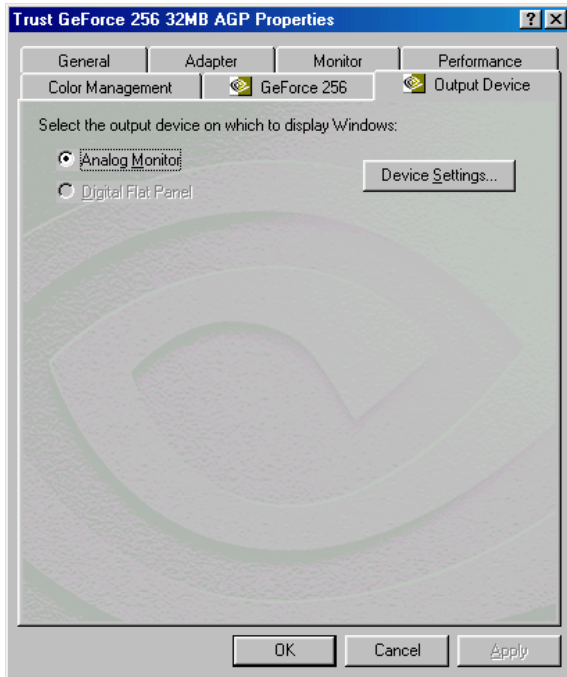
<b>A</b>	Selects the colour that you wish to adjust (red, green and/or blue).
<b>B</b>	Sets the brightness.
<b>C</b>	Sets the contrast.
<b>D</b>	Sets the gamma correction.
<b>E</b>	Applies the present colour settings after restarting Windows.
<b>F</b>	Saves the changed colour settings.
<b>G</b>	Resets the default settings.
<b>H</b>	Selects the colour settings which you have saved.

6. Besides the 'Color Correction' tab, there are also the 'Direct3D Settings', 'OpenGL Settings', 'Overlay Color Control' and 'Other Options' tabs (see figure 19). You can use these screens to adjust the settings for applications, which are based on Direct3D or OpenGL.

**Note:** These options are only for advanced users. The wrong settings will reduce the performance.

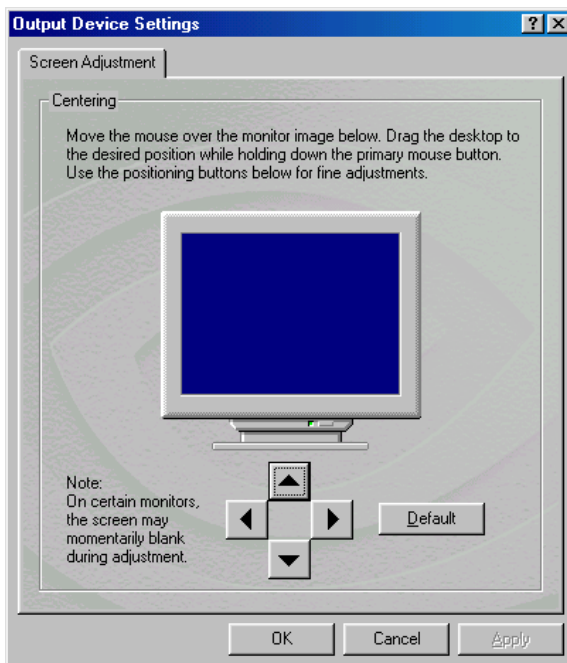
7. Click on the 'Output Device' tab (see figure 18).

8. Figure 20 will appear. Click on 'Device Settings'.



**Figure 20: Display settings**

9. Figure 21 will appear. You can use this screen to position the image on your monitor by dragging the monitor image with the mouse whilst holding down the left mouse button.



**Figure 21: Altering the position of the image**

10. Use the arrow buttons to fine-adjust the position of the image.
11. Click on 'Default' to return to the default settings.
12. Click on 'OK' to save the settings.



## 5. Troubleshooting

If your Trust GeForce 256 32MB AGP does not work correctly, check the points given in the table below. If this does not help to solve the problem, check the FAQ's and the latest version of the driver on the Internet ([www.trust.com](http://www.trust.com)), or contact your dealer or the Trust Helpdesk. The following details will be required:

- The article number.
- Your Windows version.
- CPU type.
- Memory.
- The name of the program or game.
- The exact error message or a good description of what does not work and when it happens.

Problem	Cause	Possible solution	
No image.	The monitor cable has not been connected correctly.	Connect the monitor cable correctly.	
	The Trust GeForce 256 32MB card has not been inserted firmly enough.	Firmly push the Trust GeForce 256 32MB AGP card into the AGP slot.	
	The old VGA card is still present.	Remove the old VGA card from the system.	
There is only an image resolution of 640x480 and 16 colours.	The Windows version used does not support AGP.	Check the minimum system requirements for the GeForce 256 (see chapter 2.1).	
	The driver for the GeForce 256 has not been installed.	Install the driver for the GeForce 256 (see chapter 3).	
The driver cannot be installed in Windows 2000.	Windows 2000 blocks non-signed drivers.	Set Windows 2000 so that it accepts non-signed drivers (see chapter 3.4).	
The image is distorted.	The resolution is too high for the monitor.	Reduce the resolution. Try 640x480 first.	
	The monitor cable has not been connected correctly.	Connect the monitor cable correctly.	
	The game is not compatible with the Trust GeForce 256 32MB AGP.		Look at <a href="http://www.trust.com">www.trust.com</a> for updates for the GeForce driver.
			Look at the game supplier's website for a patch.
An error message is displayed when games are started.	The Trust GeForce 256 32MB AGP driver has not been installed.	Install the driver.	
	DirectX has not been installed.	(Re)install DirectX.	

## 6. Specifications

Compatibility	AGP 4x, 2x, 1x
	Windows 95 OSR2, 98, NT4 (Service Pack 3) and Windows 2000
	DirectX7
Chip set	NVIDIA GeForce 256
Memory	32MB SDRAM
Maximum pixel frequency	350 MHz RAMDAC
Direct3D acceleration	Windows 95 OSR2
	Windows 98
Supporting 3D standards	Direct 3D
	Open GL
Video display	MPEG-I, MPEG-II/DVD, DirectShow and Indeo
Monitor support	Standard and Multi-frequency analogue monitors
	DDC2B Plug & Play

Resolutions	Renew frequencies	Colour pallet
640x480	60, 70, 72, 75, 85, 100, 120, 140, 144, 150, 170, 200, 240 Hz	16, 32 bit
800x600	60, 70, 72, 75, 85, 100, 120, 140, 144, 170, 200, 240 Hz	16, 32 bit
1024x768	60, 70, 72, 75, 85, 100, 120, 140, 144, 170, 200 Hz	16, 32 bit
1152x864	60, 70, 72, 75, 85, 100, 120, 140, 150, 170 Hz	16, 32 bit
1280x960	60, 70, 72, 75, 85, 100, 120, 140, 150 Hz	16, 32 bit
1280x1024	60, 70, 72, 75, 85, 100, 120, 140, 150 Hz	16, 32 bit
1600x900	60, 70, 72, 75, 85, 100, 120 Hz	16, 32 bit
1600x1200	60, 70, 72, 75, 85, 100 Hz	16, 32 bit
1920x1080	60, 70, 72, 75, 85 Hz	16, 32 bit
1920x1200	60, 70, 72, 75, 85 Hz	16, 32 bit
1920x1440	60, 70, 75 Hz	16, 32 bit
2048x1536	60 Hz	16, 32 bit

## 7. Trust Service Centres

<b>Inhabitants of the UK and Ireland should contact:</b>	
	<b>UK Office</b>
From: 9:30 - 17:00	Internet <a href="http://www.trust.com">www.trust.com</a> E-mail <a href="mailto:support-uk@trust.com">support-uk@trust.com</a> Fax +44-(0)1376-514633 Phone +44-(0)1376-500000
<b>Inhabitants of Italy should contact::</b>	
	<b>Italian Office</b>
From: 9:00 - 13:00 / 14:00 - 18:00	Internet <a href="http://www.trust.com">www.trust.com</a> E-mail <a href="mailto:support-it@trust.com">support-it@trust.com</a> Fax 051-6635843 Phone 051-6635947
<b>Inhabitants of France and North Africa should contact:</b>	
	<b>French Office</b>
From: 9:00 - 17:00	Internet <a href="http://www.trust.com">www.trust.com</a> E-mail <a href="mailto:support-fr@trust.com">support-fr@trust.com</a> Fax +33-(0)1-48174918 Phone +33-(0)1-48174931
<b>Inhabitants of Germany should contact:</b>	
	<b>German Office</b>
From: 9:00 - 17:00	Internet <a href="http://www.trust.com">www.trust.com</a> E-Mail <a href="mailto:support-de@trust.com">support-de@trust.com</a> Fax 02821-58873 Phone 0800-00TRUST (=0800-0087878)
<b>Inhabitants of Spain should contact:</b>	
	<b>Spanish Office</b>
From: 9:00 - 17:00	Internet <a href="http://www.trust.com">www.trust.com</a> E-Mail <a href="mailto:support-es@trust.com">support-es@trust.com</a> Fax +31-78-6543299 Phone +31-78-6549999
<b>Inhabitants of The Netherlands should contact:</b>	
	<b>Dutch Office</b>
From: 9:00 - 17:00	Internet <a href="http://www.trust.com">www.trust.com</a> E-Mail <a href="mailto:support-nl@trust.com">support-nl@trust.com</a> Fax 078-6543299 Phone 0800-BELTRUST (=0800-23587878) or 078-6549999
<b>Inhabitants of all other European Countries should contact:</b>	
	<b>European Head Office</b>
From: 9.00 - 17.00	Internet <a href="http://www.trust.com">www.trust.com</a> E-mail <a href="mailto:support@trust.com">support@trust.com</a> Fax +31-78-6543299 Phone +31-78-6549999

