

100MB NETWORK PC-CARD

User's manual

Version 1.0



Thank you

Thank you very much for purchasing this product from the Trust range. We wish you hours of fun with it. Please read this manual carefully before using the product.

Registration

Register your purchase now at the Trust Internet site (www.trust.com) and you could win one of the fabulous prizes. The web site is also the place to look for dealer addresses, comprehensive product information, drivers, and FAQ (Frequently Asked Questions) sheets.

Copyright Statement

No part of this manual may be reproduced or transmitted, in any form or by any means, electronic or mechanical, including photocopying, recording, or information storage and retrieval systems, for any purpose other than the purchaser's personal use, without the prior written permission of the manufacturer.

Disclaimer Statement

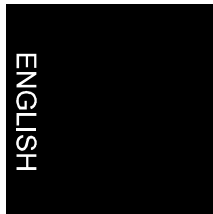
The manufacturer specifically disclaims all warranties, either express or implied, including but not limited to implied warranties of merchantability and fitness for a particular purpose, with respect to the software, the product manual(s) and written materials, and any other accompanying hardware. The manufacturer reserves the right to revise or make improvements to its product at any time and without obligation to notify any person of such revisions or improvements.

In no event shall the manufacturer be liable for any consequential or incidental damages, including any loss of business profits or any other commercial damages, arising out of the use of its product.

All company or product names are trademarks or registered trademarks or service marks of their respective owners.

Contents

1. Introduction	2
1.1 Conventions used in this manual	2
1.2 Contents of the package	2
1.3 Minimum system requirements	2
2. Connection	3
3. Installing the driver	4
3.1 Windows 95	4
3.2 Windows 98	5
3.3 Windows NT	8
4. Network protocols	9
4.1 Computer name and workgroup	10
5. Troubleshooting	10
5.1 Unable to make a connection	11
5.2 Unable to make a connection under Windows 95/98	11
5.3 Novell Netware-server has not been found	12
5.4 Problem/Solution	12
6. Technical specifications	13



1. Introduction

This manual is intended for users of the Trust 100MB Network PC-Card. No specific prior knowledge is needed to install and use this product.

If you have any questions after reading this manual, please contact one of the Trust service centres. You will find information on the service centre nearest to you at the back of this manual. You can also visit the Trust website (www.trust.com) for support, comprehensive product information, drivers, and FAQs (Frequently Asked Questions).

1.1 Conventions used in this manual

The following conventions have been used in this manual to indicate instructions:

- | | |
|--------------------|--|
| <key> | Here you should press a key. The name of the key is given between brackets. |
| 'System' | This is a specific term used in a program. These are the terms used by, for example, Microsoft Windows 98. |
| [DIR] | Key in the text shown in square brackets [...]. |
| (term) | The text between the parentheses (...) is the English term, e.g. (File) used in the figure referred to. |

Additional information will be shown as follows:

Note: *The 100MB Network PC-Card only works with UTP/STP networks.*

1.2 Contents of the package

Before reading the manual, please check the contents of the package. It should contain the following:

- PC-Card network adapter
- Media coupler cable
- Diskette contain the drivers
- This manual

Please contact your dealer if anything is missing or damaged.

1.3 Minimum system requirements

- 486 CPU
- Windows 95, 98 or NT4
- 16MB RAM

- 4MB free hard disk space
- Free PCMCIA type II slot
- 10 / 100 MB network connection

2. Connection

1. Connect the media coupler cable supplied to the 100MB Network PC-Card (see figure 1, point 1). This will only fit one way round. Do not use any excessive force if it does not fit.
2. Connect your network's RJ45 cable to the media coupler connection (see figure 2).

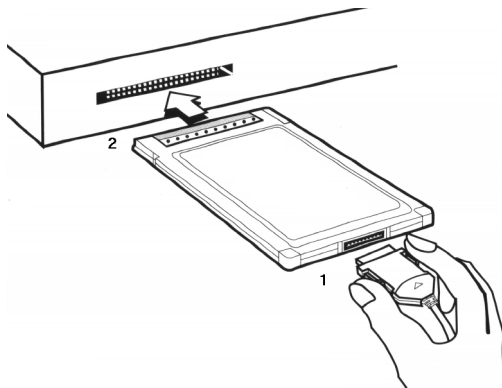


Figure 1: Connecting the media coupler cable and fitting the PC-Card

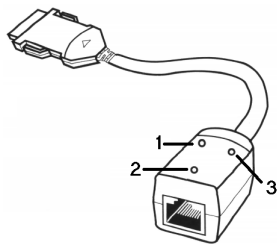


Figure 2: Media coupler cable

Light	Function
1	Flashes green during data transfer.
2	Lights yellow during a connection speed of 100MB. Goes out at a speed of 10MB.
3	Is green when there is a network connection.

Table 1: Description of figure 2

3. Installing the driver

This chapter describes the installation for Windows 95, 98 and NT 4.0. Since there are many different network systems available, and taking into account the quick development in this field, it is not possible to have a complete manual which includes a description of the installation for every type of network system.

The diskette supplied contains English instructions for every network operating system. This information is contained in the Readme.txt file which can be found in the folder for the network system concerned.

3.1 Windows 95

1. Start Windows 95.
2. Insert the diskette into your disk drive.
3. Insert the 100MB Network PC-Card into a free PCMCIA type 2 slot (see figure 1). Windows will detect new hardware (figure 6).
4. Click on 'Next'. Windows will display a message saying that the driver cannot be found (figure 3).

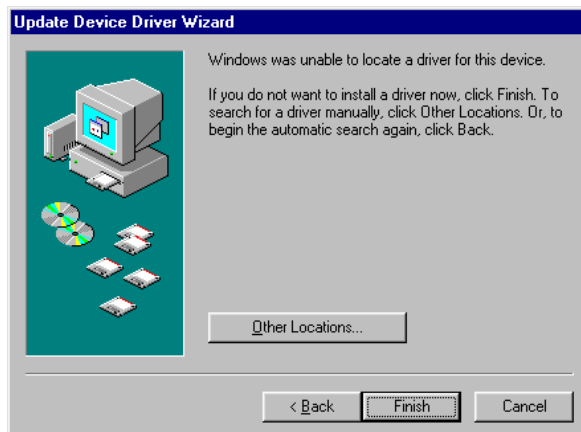


Figure 3: No driver located

5. Click on 'Other Locations...'. Figure 4 will appear.

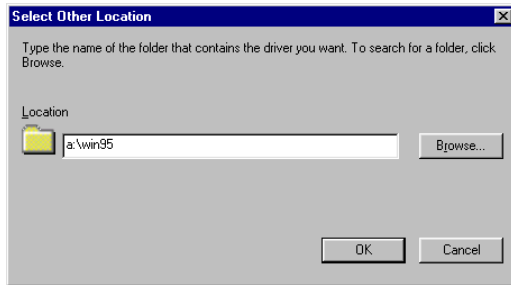


Figure 4: Selecting the location of the driver

6. In the command line, type: 'a:\win95' and click on 'OK'. Figure 5 will appear.

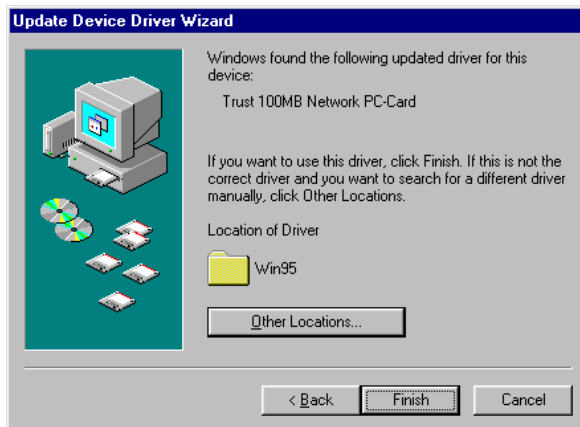


Figure 5: Driver found

7. Click on 'Finish' to complete the installation. A number of files will now be copied to your computer. It may be possible that Windows is not able to locate a number of files. If this happens, give the location as 'a:\win95' again. It may be necessary to restart your computer after the installation.

3.2 Windows 98

1. Start Windows 98.
2. Insert the diskette into your disk drive.

100MB Network PC-Card

3. Insert the 100MB Network PC-Card into a free PCMCIA type 2 slot (see figure 1). Windows will detect new hardware (figure 6).



Figure 6: New hardware detected

4. Click 'Next' to continue. Figure 7 will appear.



Figure 7: Searching for the best driver

5. Choose the first option (Search for the best driver for your device) and then click on 'Next'. Figure 8 will appear.



Figure 8: Selecting the location of the driver

6. Choose the last option (Specify a location) and type in the command line: 'a:\win98'. Click on 'Next'. Figure 9 will appear.

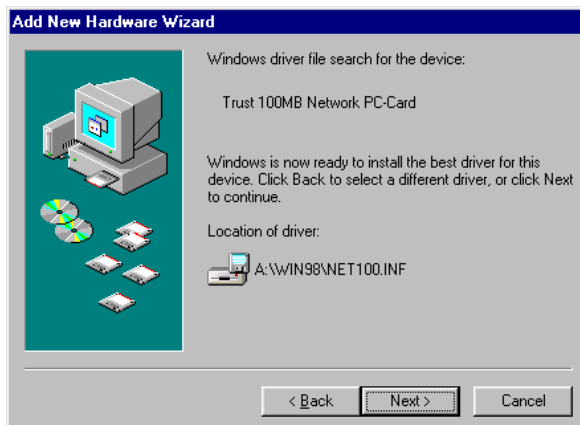


Figure 9: Driver found

7. Click on 'Next'. A number of files will be copied to your hard drive. It may be possible that Windows is not able to locate a number of files to be copied. If this happens, give the location as 'a:\win98' again. Figure 10 will appear once the files have been copied.



Figure 10: Installation complete

8. Click on 'Finish' to complete the installation . It may be necessary to restart your computer after the installation.

3.3 Windows NT

1. Insert the 100MB Network PC-Card into a free PCMCIA type 2 slot (see figure 1).
2. Click on the 'Start' button in the Taskbar and select 'Settings' and then 'Control Panel'.
3. Double click on the 'Network' icon.
4. Choose the 'Adapters' tab and click on 'Add'. Insert the diskette containing the drivers into your 'A:' disk drive.
5. Click on 'Diskette'. Give the location as 'A:\WINNT' and click on 'Enter'.
6. The correct device will be given. Click on 'Enter'. Follow the on-screen instructions. Choose the option to restart your computer.
For more information about network installation under Windows NT4, refer to the Windows NT4 guidebook and/or the Microsoft website.

4. Network protocols

Network devices communicate with each other using protocols. These must be installed. Follow the steps below to test these.

Request your network's properties by right-clicking the network icon on the desktop. Figure 11 will appear.

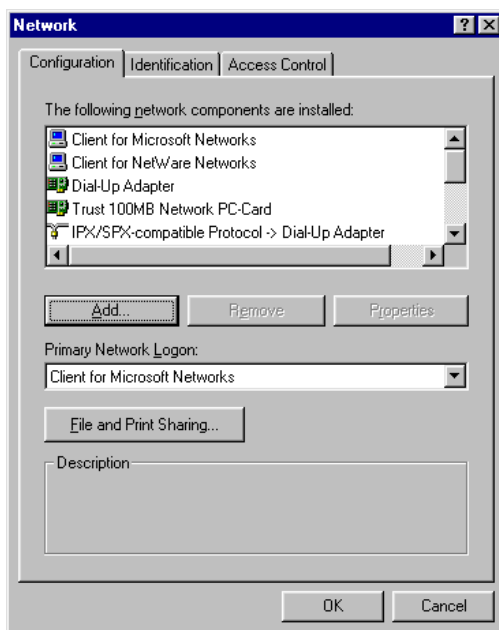


Figure 11: Network properties

This is a short description of the various clients, adapters and protocols:

Client for Microsoft Networks	Client necessary to make connections with other computers working with Microsoft Windows.
Client for NetWare Networks	Client necessary to make connections with other computers working with Novell Netware.
Dial-Up Adapter	Adapter necessary to make an Internet connection.
Trust 100MB Network PC-Card	The network adapter.
IPX/SPX-compatible Protocol	Necessary for communication with Novell networks. It is sometimes necessary for games.
NetBEUI	Microsoft Point-to-Point protocol. Necessary for a standard network connection in Windows.
TCP/IP	Necessary for intranet. It is sometimes necessary for games.

Some network clients and protocols are not always necessary and can therefore be safely removed (e.g. 'Client for Netware Networks' en 'IPX/SPX-compatible Protocol' if you do not wish to use Novell networks).

When using the TCP/IP protocol, make sure that you give a unique IP address to the network adapter. For more information, see the Windows Help function or the Microsoft website.

4.1 Computer name and workgroup

In order to make a connection with the network, your computer must be identified by the network by a unique computer name. Fill in this name in the network properties. Choose the second tab (Identification) to do this. Figure 12 will appear.

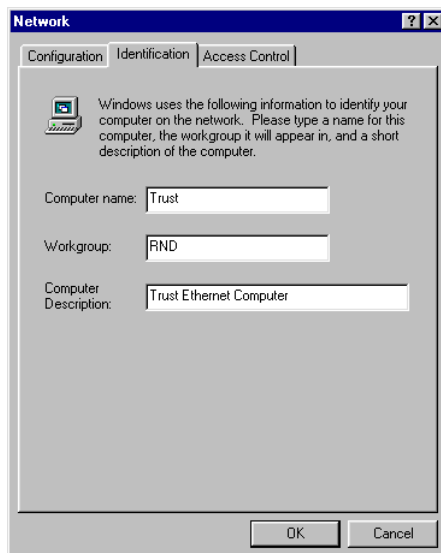


Figure 12: Assigning a computer name and a workgroup

Type a unique name for 'Computer name'. This must not be longer than 15 characters.

Type a workgroup name for 'Workgroup'. This may be any name you choose. Computers with the same workgroup name will find each other more easily under Windows.

5. Troubleshooting

This chapter is intended to help solve any problems. If this does not help to solve the problem, visit the Trust website at www.trust.com, contact your dealer or the Trust Helpdesk. The following details will be required:

- **Article number (this is given under the bar code);**
- **Your version of Windows and its language;**

- **The type of CPU and its speed;**
- **The size of the internal memory;**
- **Name and version of the program;**
- **The exact error message or a good description of what does not work and when it does not work.**

Although the 100MB Network PC-Card is easy to install, it is not easy to set up a computer for use in a network. Therefore, make sure you have the network manual available.

Since the 100MB Network PC-Card can be used in combination with many different network systems, the procedures for solving problems will only be general guidelines.

5.1 Unable to make a connection

Check the following points first if the computer is unable to make a connection with the server or another computer:

1. Are the drivers for the 100MB Network PC-Card installed correctly? The drivers can not be installed if the card is faulty or is not correctly inserted into the PCMCIA slot.
2. Have the correct drivers been selected for the network that you wish to use? Ask your system manager for information about the network.
3. Have the correct values been entered for the type of packet and the IP address?
4. Has the plug for the network cable been pushed into the media coupler connector as far as possible?
5. Does the network hub work? Try to make the connection from another work station that is connected to the same hub.
6. Does the connection run via a hub? Two computers cannot be connected directly to each other via a UTP or STP cable, except via a so-called 'Cross-link' cable.
7. Has Windows 95/98 been started in the mode 'Only MS-DOS prompt' (Command prompt only)? The Windows 95/98 drivers do not work in this mode. The DOS drivers must be installed if you wish to use the network in this mode.

5.2 Unable to make a connection under Windows 95/98

Also see the Microsoft Windows manual for more information.

Check the following:

1. Are the NetBEUI protocol and the 'Client for Microsoft networks' installed? Check the network properties. These components are necessary to make a connection. If necessary, add these components by clicking on the 'Add' tab.
2. Is the NetBEUI protocol bound to the 100MB Network PC-Card driver? Select 'Bindings' in the network properties window. This is only necessary if the

connection has been broken manually. This connection is automatically created by Windows 95/98 during the installation of a new network card.

3. Do both systems have the same workgroup name? The network name you have given must be known by the server. If necessary, change the name. Contact your network manager if you do not know the name of your workgroup. The name of the workgroup must not be the same as another computer name in the same network.

5.3 Novell Netware-server has not been found

Check the following:

1. Has the correct 'packet' been selected? Most Novell networks use Ethernet_802.3. Ask your system manager for information about the correct type of 'packet'.
2. Have the IPX/SPX protocol and the client for Novell networks been installed under Windows 95/98?

5.4 Problem/Solution

Problem	Cause	Possible solution
'Fail' message(s) is (are) displayed when carrying out the diagnostic test.	The network cable is faulty or incorrectly connected.	Check the cable and, if necessary, replace it.
	The media coupler cable is not connected correctly.	Insert it correctly into the PC-Card (see chapter 2).
	The PC-Card is faulty.	Return it to your dealer.
	Your PC-Card's hardware chip is not compatible with the diagnostic program.	The 100MB PC-Card is probably correct. Test it under Windows or another system.
There is no 'Network Neighborhood' icon on the desktop.	The driver is not (correctly) installed.	Reinstall the driver.
	The network protocols are not (correctly) installed.	Follow the instructions given in chapter 4.2.
Other computers are not visible on the network.	The cable is faulty or not (correctly) connected.	Make sure that the light 3 (figure 2) lights up.
	No stations or printers are shared with other computers on the network.	Share at least 1 station or 1 printer to make the computer visible in the network.

Problem	Cause	Possible solution
	The network card has not correctly reported itself on the network.	Wait 20 seconds and try again.
	Your PC's workgroup name does not agree with the others on the network.	Change the workgroup name in the 'Network Properties'.

6. Technical specifications

Settings	<ul style="list-style-type: none"> • Plug and Play for Windows 95 and Windows 98
Type of network	<ul style="list-style-type: none"> • Normal Ethernet 10 MB • Fast Ethernet 100 MB (in accordance with the 100TX-standard)
Slot	<ul style="list-style-type: none"> • PCMCIA type-II
Performance improvements	<ul style="list-style-type: none"> • Full duplex • Automatic selection of the fastest connection
Media connection	<ul style="list-style-type: none"> • RJ45 with category 5 cable (STP/UTP) for 100 MB • RJ45 with category 3, 4 or 5 cable (STP/UTP) for 10 MB
Indication lights	<ul style="list-style-type: none"> • 100 MB per second • Connection • Send/receive data