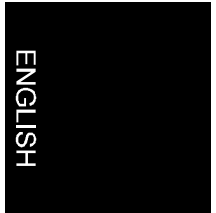




Ami Mouse Combi / Scroll Pro



Ami Mouse Combi Ami Mouse Scroll Pro -Excellence Series-

User's manual

Version 1.0



Thank you

Thank you very much for purchasing this product from the Trust range. We wish you hours of fun with it. Please read this manual carefully before using the product.

Registration

Register your purchase now at the Trust Internet site (www.trust.com) and you could win one of the fabulous prizes. The web site is also the place to look for dealer addresses, comprehensive product information, drivers, and FAQ (Frequently Asked Questions) sheets.

Copyright Statement

No part of this manual may be reproduced or transmitted, in any form or by any means, electronic or mechanical, including photocopying, recording, or information storage and retrieval systems, for any purpose other than the purchaser's personal use, without the prior written permission of the manufacturer.

Disclaimer Statement

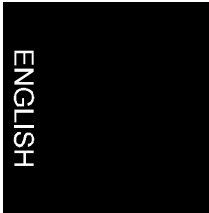
The manufacturer specifically disclaims all warranties, either express or implied, including but not limited to implied warranties of merchantability and fitness for a particular purpose, with respect to the software, the product manual(s) and written materials, and any other accompanying hardware. The manufacturer reserves the right to revise or make improvements to its product at any time and without obligation to notify any person of such revisions or improvements.

In no event shall the manufacturer be liable for any consequential or incidental damages, including any loss of business profits or any other commercial damages, arising out of the use of its product.

* All company or product names are trademarks or registered trademarks or service marks of their respective owners.

Table of Contents

1. Introduction	2
2. Connecting	2
2.1 Connecting to a PS/2 port	2
2.2 Connecting to a serial port	4
2.3 Operation of the Ami Mouse.....	4
3. Installing the driver	5
3.1 Installation in MS-DOS.....	5
3.2 Windows 3.1x / 95 / 98 / NT 4.x	5
4. Using Ami Mouse	6
4.1 Opening the Control Panel	6
4.1.1 Windows 3.1x.....	6
4.1.2 Windows 95 / 98 / NT	6
4.2 Wheel functions (Excellence Series).....	6
4.3 Configuration of third button.....	7
4.4 Zooming with Microsoft Office 97 (Excellence Series).....	8
4.5 Automatic scrolling with MS-Office 97 and Internet Explorer 3.x / 4.x.....	8
5. Maintenance	8
6. Removing the driver	9
6.1 Windows 3.1x.....	9
6.2 Windows 95 / 98 / NT4	9
7. Troubleshooting	10
8. Specifications	10



1. Introduction

This manual is meant for users of the Ami Mouse Combi and the Ami Mouse Scroll Pro -Excellence Series-. When subjects are treated or described that do not apply to both products, the manual will indicate as such.

No special knowledge is required for the installation and use of this product.

If you have any questions after reading this manual, please contact one of the Trust service centres. You will find information on the service centre nearest to you at the back of this manual. You can also visit the Trust website (www.trust.com) for support, comprehensive product information, drivers, and FAQ (Frequently Asked Questions) sheets.

The manual uses the following conventions:

'Control panel'	A software term: is (usually) displayed on the screen.
<Enter>	A key that must be pressed on the keyboard.
[a:\setup]	A command that must be typed in by means of the keyboard.

Important information will be shown as follows:

Note: *The disk may not be formatted.*

2. Connecting

The packaging should contain the following items:

- Ami Mouse
- Disk with driver
- Converter plug
- This manual

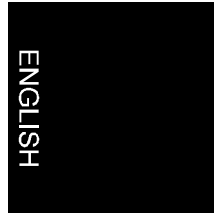
Contact your dealer if any of the items are missing. Save the packaging in the event that the Ami Mouse Scroll, must be transported.

2.1 Connecting to a PS/2 port

1. Switch off the computer.
2. Remove the old mouse (if present).
3. Connect the Ami Mouse to the PS/2 port on the rear of your computer (if necessary, use the converter plug).



4. Switch on the computer.



2.2 Connecting to a serial port

1. Switch off the computer.
2. Remove the old mouse (if present).
3. Connect the Ami Mouse to the serial port on the rear of your computer (if necessary, use the converter plug).
4. Secure the fastening bolts.
5. Switch on the computer.

2.3 Operation of the Ami Mouse

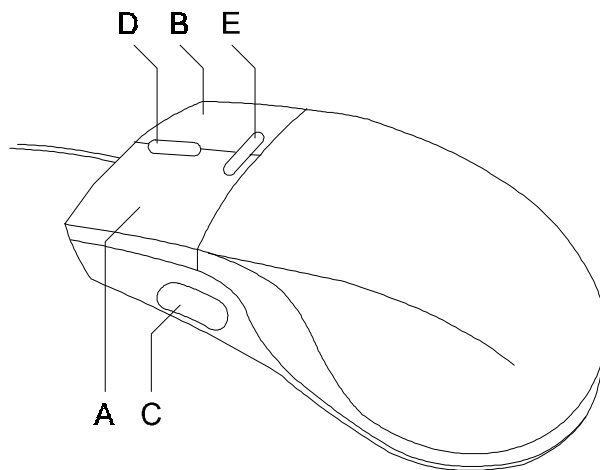


Figure 1: Location of buttons

Button	Function	Comment
A	Left mouse button	
B	Right mouse button	
C	Third mouse button	
D	Vertical wheel	only with the Excellence version
E	Horizontal wheel	only with the Excellence version

Table 1: Functions of the buttons

3. Installing the driver

Before installing the driver for the Ami Mouse, you must first remove your current mouse driver.

Quit any programs before you install the driver.

3.1 Installation in MS-DOS

1. Start up your computer in MS-DOS.
2. Insert the disk into floppy-drive A.
3. Type in [A:\DOSINST] and press <ENTER>.
4. Press <ENTER> to accept the source directory.
5. Press <ENTER> to accept the target directory. The files will then be copied. This will take a short while.
6. After installation has taken place, start the test program.
7. Click 'Quit' to close the test program.
8. Press <Y> to adjust the 'Autoexec.bat' file. The installation in MS-DOS is now completed.

Note: *The scroll and zoom functions do NOT work in DOS. They have been designed for Windows only.*

3.2 Windows 3.1x / 95 / 98 / NT 4.x

1. Start up Windows.
2. Insert the disk into your floppy drive.
3. Click 'Run' in the 'File' menu (Win 3.1x) or click 'Start'.
4. Type in [A:\SETUP] and click 'OK'.
5. Follow the instructions on the screen.
6. After installation, remove the disk and restart the computer to complete the installation.

4. Using Ami Mouse

4.1 Opening the Control Panel

4.1.1 Windows 3.1x

Click the icon to open the 'Control Panel' (see Figure 2).

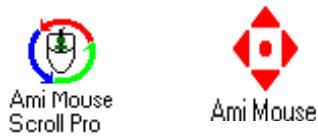


Figure 2: Icon for Windows 3.1x

4.1.2 Windows 95 / 98 / NT

Click the icon on your taskbar to open the 'Control Panel'

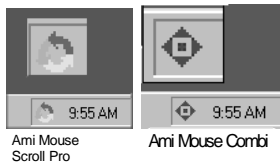


Figure 3: Icon on taskbar for Windows 95 / 98 / NT.

4.2 Wheel functions (Excellence Series)

The window 'Mouse Properties' appears on your display monitor. Click the tab 'Wheel' with your mouse to set the wheel functions.

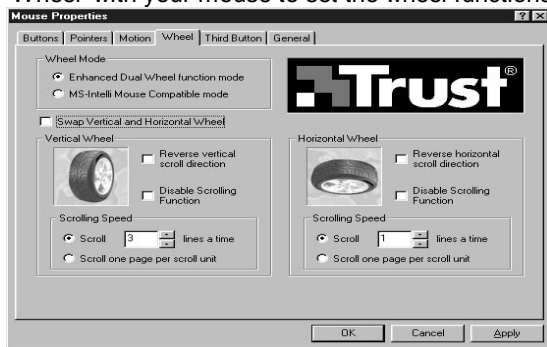


Figure 4: 'Wheel' tab in 'Mouse Properties'

Explanation of functions:

- **Enhance Dual Wheel function mode** (Not in Windows 3.1x)
Has all the advantages of the MS-Intellimouse and can scroll both vertically and horizontally in Windows 95 / 98 / NT programs.
- **MS-Intellimouse Compatible mode** (Not in Windows 3.1x)
Only the vertical wheel works; otherwise, it has the same functions as the MS-Intellimouse.
- **Swap Vertical and Horizontal wheel**
Switches the function of the vertical and horizontal wheel.
- **Reverse vertical/horizontal scroll direction**
Inverts the scroll direction.
- **Scrolling speed**
Sets the scrolling speed.
- **Scroll one page per scroll unit**
Scrolls through 1 entire page when the wheel is used.

4.3 Configuration of third button

Use your mouse to click the tab 'Third button' (see Figure 5). There you can select a certain function.

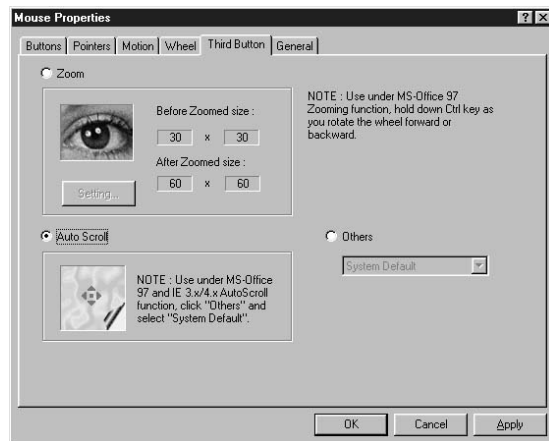


Figure 5: 'Third Button' tab in 'Mouse Properties'

Explanation of functions:

- **Zoom**
Selecting this function allows you to use the third mouse button as a magnifying glass. You can set-up the size of the magnifying glass and the degree of magnification by clicking on the 'Settings' button.

- **Auto Scroll**
Select this function to activate the scroll function with the third mouse button.
- **Others**
Select this function if you want to start a certain function with the third mouse button.

4.4 Zooming with Microsoft Office 97 (Excellence Series)

Use Zoom to magnify or miniaturise the document on the screen.

- Insert the cursor in the package that is compatible with MS-Office 97.
- Press the <CTRL> key and simultaneously rotate the vertical wheel forward to zoom in or backward to zoom out.

Note: *This function does not work in Windows 3.1x.*

4.5 Automatic scrolling with MS-Office 97 and Internet Explorer 3.x / 4.x

1. Select the tab 'Third button'.
2. Click 'Others' and make a selection from the list 'System Defaults'.
3. Click 'Apply' to activate the modifications.

Note: *This function does not work in Windows 3.1x.*

5. Maintenance

Your mouse does not require any special maintenance.

To clean your mouse:

- Use a clean, dry cloth.
- Do not use harsh agents such as gasoline or turpentine etc. as they harm the equipment.
- Never submerge the device in any fluid whatsoever.

Cleaning the moving parts is only necessary when the mouse no longer moves or reacts as it should.

1. Turn off the computer.
2. Place the mouse upside-down on a table.
3. Remove the protection plate in the direction indicated by the arrows.
4. Remove the ball from the mouse and clean it with a clean, dry cloth.
5. Clean the rollers in the mouse with a clean cotton swab.

6. Place the ball back into the mouse and close the protection plate.

6. Removing the driver

If you want to remove the driver or install a different driver for the mouse, then you just perform the following steps.

6.1 Windows 3.1x

Quit the Scroll program of your mouse. Go to the program group of your mouse and double click the icon 'Uninstaller'. Follow the instructions on your display screen.

The software is now deleted.

6.2 Windows 95 / 98 / NT4

1. Start the computer.
2. Quit the mouse program on your taskbar.
3. Click the 'Start' button.
4. Click 'Settings'.
5. Click 'Control Panel'.
6. Click the 'Software' icon 'Add/Remove Programs'.
7. Select 'Ami Mouse Combi for the Ami Mouse Combi or select 'Ami Mouse Scroll Pro' if you use the Ami Mouse Scroll Pro Excellence Series.
8. Click the 'Add/Remove' button.
9. You will be asked whether you are sure you want to remove the driver. Click 'Yes'.

The driver is removed. Click 'OK' afterwards.
The Ami Mouse Scroll program is removed.

7. Troubleshooting

Problem	Cause	Possible solution
Mouse does not move.	Mouse is not connected properly.	Re-connect your mouse (Chapter 2).
Windows issues error message during start up.	Mouse is not connected.	Connect mouse properly (Chapter 2).
Scroll function does not work.	Software is not installed.	Install the mouse software (Chapter 3).
	Software is set improperly.	Adjust the software properly (Chapter 4).
	Application not compatible with Windows.	Use an application compatible with Windows.
Mouse moves inadequately.	Ball and rollers are dirty.	Clean ball and mouse (Chapter 5).

Check the FAQ and the latest version of the driver at www.trust.com on the Internet.

Contact your dealer if you continue to have problems with your mouse after having tried these solutions.

8. Specifications

- Three-button mouse
- Horizontal and vertical wheel for scroll functions (Excellence Series)
- 520 dpi resolution
- Programmable functions for Windows 3.1x, 95, 98 and NT 4.0 (under third mouse button)
- Suited for connection to serial and PS/2 port
- Compatible with Microsoft Mouse
- Compatible with Windows 3.1x, 95, 98, NT 4.0 and MS-DOS