

SAVAGE DRAGON 4 PRO

User's manual

Version 1.0

Thank you

Thank you very much for purchasing this product from the Trust range. We wish you hours of fun with it. Please read this manual carefully before using the product.

Registration

Register your purchase now at the Trust Internet site (www.trust.com) and you could win one of the fabulous prizes. The web site is also the place to look for dealer addresses, comprehensive product information, drivers, and FAQs (Frequently Asked Questions).

Copyright Statement

No part of this manual may be reproduced or transmitted, in any form or by any means, electronic or mechanical, including photocopying, recording, or information storage and retrieval systems, for any purpose other than the purchaser's personal use, without the prior written permission of the manufacturer.

Disclaimer Statement

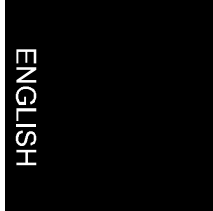
The manufacturer specifically disclaims all warranties, either express or implied, including but not limited to implied warranties of merchantability and fitness for a particular purpose, with respect to the software, the product manual(s) and written materials, and any other accompanying hardware. The manufacturer reserves the right to revise or make improvements to its product at any time and without obligation to notify any person of such revisions or improvements.

In no event shall the manufacturer be liable for any consequential or incidental damages, including any loss of business profits or any other commercial damages, arising out of the use of its product.

All company or product names are trademarks or registered trademarks or service marks of their respective owners.

Table of contents

1. Introduction	2
2. Safety	3
3. Hardware installation.....	4
4. Software installation.....	5
4.1 Installing the driver in Windows 95	5
4.2 Installing the driver in Windows 98	8
4.3 Installing the driver in Windows NT4	11
4.4 DirectX6 installation	12
5. Changing properties	13
5.1 Monitor settings.....	13
5.2 Video settings	15
6. Troubleshooting.....	17
7. Specifications.....	18
8. Trust Service Centres.....	19



1. Introduction

This manual is intended for users of the Trust Savage Dragon 4 Pro. No specific prior knowledge is needed to install and use this product.

If you have any questions after reading this manual, please contact one of the Trust service centres. You will find information on the service centre nearest to you at the back of this manual. You can also visit the Trust web site (www.trust.com) for support, comprehensive product information, drivers, and FAQs (Frequently Asked Questions).

The following conventions have been used in this manual to indicate instructions:

- | | |
|--------------------|---|
| <key> | Here you should press a key. The name of the key is given between the brackets. |
| 'System' | This is a specific term used in a program. These are the terms used by, for example, Windows. |
| [DIR] | Text in this font should be typed in. |
| (term) | The text between the parentheses (...) is the English term, e.g. (File) used in the figure referred to. |

Additional information will be shown as follows:

Note: *Turn off the computer before connecting the product.*

Content of the packaging

Check the contents of the packaging before reading the manual. You should find the following items in it:

- Savage Dragon 4 Pro AGP VGA card
- CD-ROM with drivers, applications and user manual
- Quick installation manual

Please contact your dealer if anything is missing or damaged.

2. Safety

Read the following instructions carefully before use:

1. Static electricity can cause damage to computer components. To discharge any static electricity from your body, touch the computer case
2. Turn off the computer and remove the plug from the outlet before you open the computer.
3. Make sure that the components you want to add to your computer are compatible to your system.

ENGLISH

3. Hardware installation

Minimal system requirements:

- Pentium II processor
- 32 MB system memory
- Operating system Windows 95 OSR2, Windows 98 or NT4 (Service Pack 3)
- Available AGP slot
- 4X CD-ROM player

Savage Dragon 4 Pro installation:

Note: *If your system contains another VGA card (card to which the monitor is connected), it should be removed before installing the Savage Dragon 4 Pro.*

1. Turn off your PC.
2. Remove the plug from the outlet.
3. Remove the casing from the computer (if necessary, consult the user manual of the computer).
4. Remove the metal cover plate or old VGA card from the AGP slot.
5. Plug the Savage Dragon 4 Pro into the available AGP slot and fasten the card.
6. Re-attach the casing to the PC.
7. Connect the monitor cable.
8. Turn on the computer.

4. Software installation

4.1 Installing the driver in Windows 95

Note: *The Savage Dragon 4 Pro driver only works under Windows 95OSR2 with an installed USB supplement. For more information, see the manual supplied with your computer.*

1. Start Windows.
2. A 'Standard PCI graphics adapter (VGA)' will automatically be detected. Click on 'Next'. See Figure 1.



Figure 1: Automatic recognition in Windows 95

3. In the next screen, click on 'Other Locations'. See Figure 2.



Figure 2: Windows 95 installation

4. Insert the CD-ROM containing the drivers into your CD-ROM player.
5. In the 'Select Other Location' dialog box, enter the following path: [D:\Win95], and click on 'OK'. See Figure 3.



Figure 3: Windows 95 installation

- The driver for the 'Trust Savage Dragon 4 Pro' is found. Click on 'Finish' to complete the installation. See Figure 4.



Figure 4: Windows 95 installation

- Windows 95 may ask you again for the driver location. Enter [D:\Win95] as path again.
- Restart your system.

You have now completed the installation of the driver. Continue with section 4.4 for the installation of DirectX6.

ENGLISH

4.2 Installing the driver in Windows 98

1. Start Windows.
2. A 'Standard PCI graphics adapter (VGA)' will automatically be detected. Click on 'Next'. See Figure 5.



Figure 5: Automatic recognition in Windows 98

3. Select the option to have Windows search for the best driver. Click on 'Next'. See Figure 6.



Figure 6: Windows 98 installation

4. Select the option to have Windows search in a specific location. Enter the path as: [D:\Win98]. Click on 'Next'. See Figure 7.



Figure 7: Windows 98 installation

5. The driver will be found. Click on 'Next'. See Figure 8. The driver will now be installed.



Figure 8: Windows 98 installation

6. Click on 'Finish' to complete the installation. See Figure 9.



Figure 9: Windows 98 installation

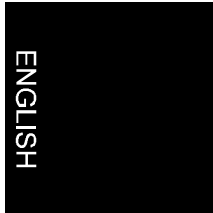
7. Restart your system.

You have now finished installing the driver. Proceed to section 4.4 for the installation of DirectX6.

4.3 Installing the driver in Windows NT4

Note: *You need to install Service Pack 3 or higher before installing the Savage Dragon 4 Pro driver.*

1. Start Windows.
2. Go to 'Start - Settings - Control Panel' and double-click on the 'Display' icon. Click on the 'Settings' tab.
3. Click on 'Display Type' and then on 'Change'.
4. Click on 'Have Disk' and enter the path: [D:\WinNT4]. Click on 'OK'.
5. Select 'Trust Savage Dragon 4 Pro'. Click on 'OK'.
6. Follow the on-screen instructions to complete the installation.
7. Restart your system.



4.4 DirectX6 installation

For optimum performance of the Savage Dragon 4 Pro 3Dfx functions under Windows 95 and 98, DirectX6 needs to be installed.

Note: *DirectX6 does not work under Windows NT4.*

1. Click 'Start' on the task bar and click 'Run'.
2. Type [D:\DirectX\dx6setup.exe] on the command line to install DirectX6. Then click on 'OK'. See Figure 10. Follow the instructions on the screen.

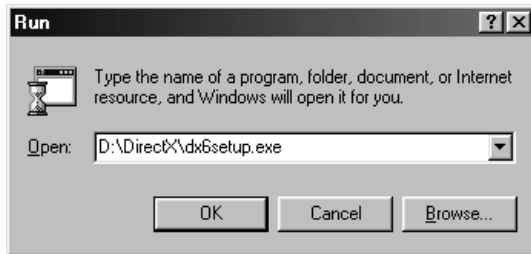


Figure 10: DirectX6 installation

3. Restart your system.

Your system is ready for use. See Chapter 5 for the Savage Dragon 4 settings.

5. Changing properties

5.1 Monitor settings

Note: *These settings are only possible in Windows 95 and 98 and only work with 16 bit colors or higher.*

1. Go to 'Start - Settings - Control Panel'.
2. Double-click on the 'Display' icon.
3. Click on the 'S3 Gamma' tab, which can be found in Windows 98 under 'Settings - Advanced Properties'. See Figure 11.

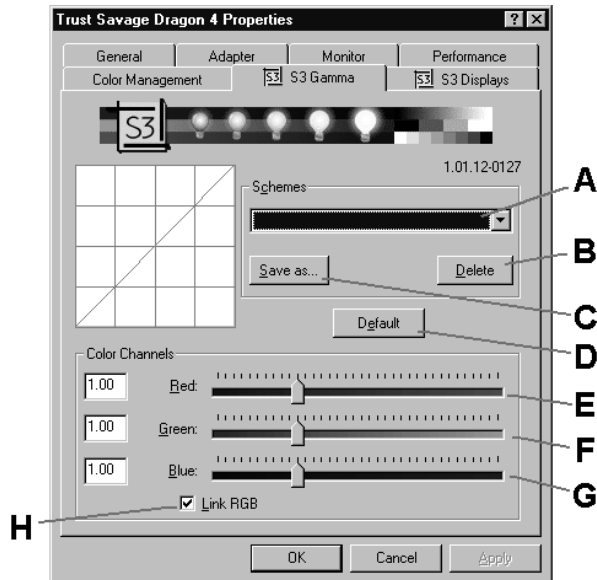


Figure 11: Changing the settings

4. Various color settings can be adjusted on the 'S3 Gamma' tab (see Figure 11). The table below gives a list of possible options.

Savage Dragon 4 Pro

A	Here you can select the color settings you have saved.
B	Click here to delete the saved color settings.
C	Click here to save the new color settings.
D	Click here to restore the default settings.
E	Scroll bar for setting the color red.
F	Scroll bar for setting the color green.
G	Scroll bar for setting the color blue.
H	If you activate this option, you can adjust the red, green and blue colors at the same time.

5. Click on the 'S3 Displays' tab (see Figure 11) and then on 'Information' to request more information on the Savage Dragon 4 Pro.

5.2 Video settings

When playing back the video images on your PC, you have the possibility to edit the display of the video image. Follow the instructions below for setting the video images.

Note: *These settings are only possible in Windows 95 and 98.*

1. Start the video image (MPEG or DVD, for example).
2. Go to 'Start - Settings - Configuration Window'.
3. Double-click on the icon for 'S3 Video Color Control'. A window like the one shown in Figure 12 will pop up.

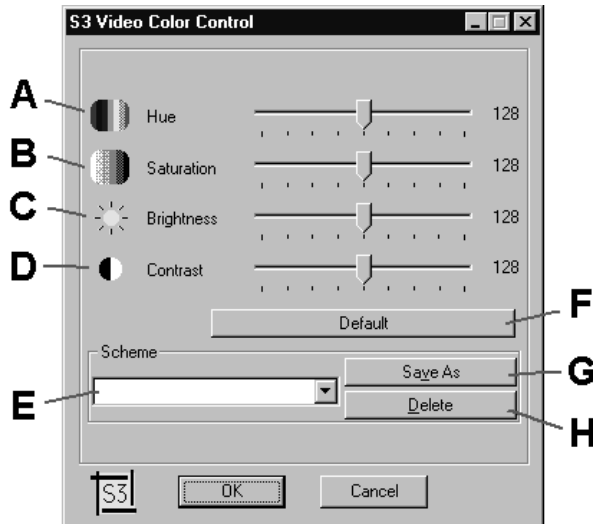


Figure 12: Video settings

4. You can adjust various color settings in this window (see Figure 12). The table below gives a list of possible options.

Savage Dragon 4 Pro

A	Here you can adjust the color (hue) of the video image.
B	Here you can adjust the saturation of the color. A low setting results in a grey image and a high setting results in sharper colors.
C	Here you can adjust the brightness of the video image.
D	Here you can adjust the contrast of the video image.
E	Here you can select the color settings you have saved.
F	Click here to restore the default settings.
G	Click here to save the new color settings.
H	Click here to delete the color settings you have saved.

6. Troubleshooting

If your Savage Dragon 4 Pro does not operate properly, check the points in the table below. If the listed suggestions do not remedy your problem, check the Internet (www.trust-site.com) for FAQs and the latest driver, or contact your dealer or the Trust help desk. For a speedy solution, have the following information ready:

- Item number
- Version number of Windows
- CPU type
- Memory
- Name program or game.
- Precise error message or a good description of what does not work exactly and when.

Problem	Cause	Possible Solution
Blank screen	Monitor cable has not been connected properly.	Connect the monitor cable properly.
	Savage 4 Pro card not installed properly.	Push the Savage 4 Pro card firmly into the AGP slot.
	Old VGA card still present.	Remove the old VGA card from the system.
Distorted picture.	Resolution too high for monitor.	Decrease the resolution. Start with 640x480.
	Monitor cable not properly connected.	Connect the monitor cable properly.
	Game is incompatible with the Savage Dragon 4 Pro driver.	Visit the game supplier's web site for a patch.
Error message when starting up games	Savage Dragon 4 Pro driver has not been installed.	Install the driver.
	DirectX has not been installed.	(Re-)install DirectX.

7. Specifications

Compatibility	AGP 4x, 2x, 1x
	Windows 95 OSR2, 98 and NT4 (Service Pack 3)
	DirectX5, DirectX6
Chip set	S3 Savage 4 Pro (86C397)
Memory	32 MB SDRAM
Maximum pixel frequency	300 MHz RAMDAC
Direct3D acceleration	Windows 95
	Windows 98
Supporting 3D standards	Direct 3D
	Open GL
Video display	MPEG-I, MPEG-II, DVD, Indeo and Cinepak
Monitor support	Standard and Multi-frequency analogue monitors
	DDC2B Plug & Play

Resolutions	Refresh rates	Colour palette
640x480	60, 72, 75, 85, 160 Hz	16, 24, 32 bits
800x600	56, 60, 72, 75, 85, 160 Hz	16, 24, 32 bits
1024x768	60, 70, 75, 85, 130 Hz	16, 24, 32 bits
1152x864	60, 70, 75, 85, 100 Hz	16, 24, 32 bits
1280x1024	60, 75, 85 Hz	16, 24, 32 bits
1600x1200	60 Hz	16, 24, 32 bits
1920x1440	60 Hz	16 bits

8. Trust Service Centres

If you have any questions after reading this manual, please contact one of the Trust Service Centres.

Keep the following in mind, however:

- If you have any questions regarding the use of a product or if you are looking for the latest drivers, you can find this information at the Trust web site (www.trust.com). The majority of the FAQ's (Frequently Asked Questions) are listed here. You can also download the latest drivers directly from the site.
- If you are unable to find the information you need at the Trust web site or if you are unable to access the site, please contact your nearest Trust Service Centre.
- Keep in mind that the waiting time may be longer if you call between 12:00 AM and 2:00 PM.
- **DO NOT RETURN** any products to the Trust Support Centre addresses below. You may return the products via your Trust dealer.

Savage Dragon 4 Pro

Country:	Contact:
UK Ireland	UK Office Internet www.trust.com E-mail trustuk@globalnet.co.uk Mail Aashima Distribution U.K. Ltd. Trust Support PO Box 5277 Witham CM8 3XU United Kingdom Fax +44-(0)1376-514633
Italy	Italian Office Internet www.trust.com E-mail trusttdp@tin.it Mail Aashima Italia s.r.l. Trust Support Via dei Pignattari, 174 Blocco 37 40050 Centergross Funo di Argelato (BO) Italia Fax 051-6635843
France North Africa	French Office Internet www.trust.com E-mail support.trust@aashima.fr Mail Aashima France sarl Trust Support BP 50002 95945 Roissy C.D.G. France Fax +33-(0)1-48174918
All other Countries	European Head Office Internet www.trust.com E-mail support@aashima.nl Mail Aashima Technology B.V. Trust Support P.O. Box 8043 3301 CA Dordrecht The Netherlands Fax +31-(0)78-6543299 For Germany only: Fax +49-(0)2821-58873