

Ami Mouse Wireless Scroll – Excellence Series -

ENGLISH

AMI MOUSE WIRELESS SCROLL – EXCELLENCE SERIES –

User's manual

Version 1.0

Thank you

Thank you very much for purchasing this product from the Trust range. We wish you hours of fun with it. Please read this manual carefully before using the product.

Registration

Register your purchase now at the Trust Internet site (www.trust.com) and you could win one of the fabulous prizes. The web site is also the place to look for dealer addresses, comprehensive product information, drivers, and FAQs (Frequently Asked Questions).

Copyright Statement

No part of this manual may be reproduced or transmitted, in any form or by any means, electronic or mechanical, including photocopying, recording, or information storage and retrieval systems, for any purpose other than the purchaser's personal use, without the prior written permission of the manufacturer.

Disclaimer Statement

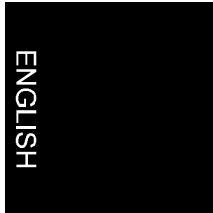
The manufacturer specifically disclaims all warranties, either express or implied, including but not limited to implied warranties of merchantability and fitness for a particular purpose, with respect to the software, the product manual(s) and written materials, and any other accompanying hardware. The manufacturer reserves the right to revise or make improvements to its product at any time and without obligation to notify any person of such revisions or improvements.

In no event shall the manufacturer be liable for any consequential or incidental damages, including any loss of business profits or any other commercial damages, arising out of the use of its product.

All company or product names are trademarks or registered trademarks or service marks of their respective owners.

Contents

1. Introduction.....	2
1.1 Conventions in the manual.....	2
1.2 Contents of the package	3
1.3 Minimum system requirements	3
2. Connecting the mouse.....	4
3. Using the mouse.....	6
4. Installing the driver.....	7
4.1 Windows 95 / 98 / NT4	7
5. Using the Ami Mouse Wireless Scroll - Excellence Series -	10
5.1 Programming the mouse buttons	10
5.2 Extra function settings.....	12
5.2.1 Office97 Compatible / Multimedia Wheel	12
5.2.2 Zooming Lens.....	13
5.2.3 Internet Browser	14
5.2.4 Internet Mailer	14
5.2.5 Launch Application	15
6. Maintenance.....	16
7. Removing the driver	17
8. Troubleshooting.....	18
9. Specifications	19
10. Trust Service Centres	20



1. Introduction

This manual is intended for users of the Ami Mouse Wireless Scroll - Excellence Series -. No specific prior knowledge is needed to install and use this product.

If you have any questions after reading this manual, please contact one of the Trust service centres. You will find information on the service centre nearest to you at the back of this manual. You can also visit the Trust website (www.trust.com) for support, comprehensive product information, drivers, and FAQs (Frequently Asked Questions).

1.1 Conventions in the manual

The following conventions have been used in this manual to indicate instructions:

- | | |
|--------------------|--|
| <key> | Here you should press a key. The name of the key is given between brackets. |
| 'System' | This is a specific term used in a program. These are the terms used by, for example, Microsoft Windows 98. |
| [DIR] | Key in the text shown in square brackets [...]. |
| (term) | The text between the parentheses (....) is the English term, e.g. (File) used in the figure referred to. |

Additional information will be shown as follows:

- Note:** *The Ami Mouse Wireless Scroll - Excellence Series - only works when connected to your computer's PS/2 port.*

1.2 Contents of the package

Before reading the manual, please check the contents of the package. It should contain the following:

- Ami Mouse Wireless Scroll - Excellence Series -
- Receiver
- CD-ROM containing the drivers and manuals
- 2 x AAA 1.5V batteries
- Quick installation manual

Please contact your dealer if anything is missing or damaged.

1.3 Minimum system requirements

- 486-DX CPU
- DOS, Windows 95 / 98 / NT4.0
- 16 MB RAM
- 10 MB free hard disk space
- 4 Speed CD-ROM
- Free PS/2 port

ENGLISH

2. Connecting the mouse

1. Turn off the computer.
2. Remove the old mouse (if fitted) from your PS/2 port.
3. Remove the receiver from the packaging and connect it to the free PS/2 on your computer.
4. Set all the dip switches on the bottom of the receiver to the 'OFF' position (downwards), except for the first one (see Figure 1). The first dip switch is indicated by an arrow.

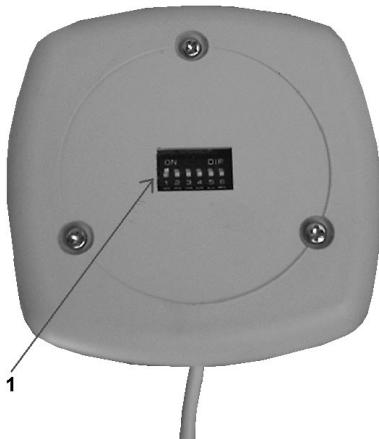
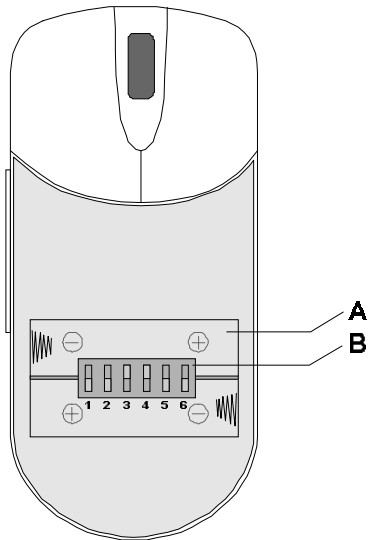


Figure 1: The bottom of the receiver

5. Remove the mouse from the packaging.

6. Remove the top cover from the mouse by pushing it away from the buttons. The battery compartment will become visible (see Figure 2).



ENGLISH

Figure 2: The battery compartment

7. Set all the dip switches on the inside of the mouse (Figure 2, B) to the 'OFF' position (downwards), except for the first one.
8. Place the batteries supplied into the battery compartment (Figure 2, A), making sure that positive and negative connections are facing the correct way.
9. Fit the mouse's top cover back into place by pushing it towards the buttons. A click will be heard when the cover is correctly in place.
10. Turn on the computer.

Note: *If you wish to use more than one Ami Mouse Wireless Scroll - Excellence Series - in the same room, they must be set to different channels so that they will not influence each other. This is done using the dip switches on the bottom of the receiver and the inside of the mouse. Set the dip switches on the receiver to the same position as those on the mouse.*

Note: *If there is the possibility that your computer could be operated from a distance via another RF mouse, set the dip switches to another position as advised in points 4 and 7. Make sure that the dip switches are in the same position on both the receiver and the mouse.*

3. Using the mouse

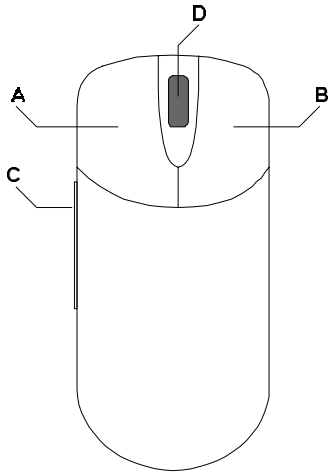


Figure 3: Position of the buttons

Button	Function	Comment
A	Left mouse button	
B	Right mouse button	
C	Fourth mouse button	
D	Scroll wheel	Also used as the third mouse button

Table 1: Explanation of Figure 3

4. Installing the driver

Note: Remove any drivers for your previous mouse before installation.

Close all programs before installing the driver.

4.1 Windows 95 / 98 / NT4

1. Start Windows. If you are working under Windows NT, log in as 'Administrator'.
2. Insert the CD-ROM into the CD-ROM drive.
3. Click on 'Start' and select 'Run'.
4. Type: [D:SETUP.EXE] and click on 'OK'. Figure 4 will appear.



Figure 4: Welcome screen

5. Click on 'Next' Figure 5 will appear.



Figure 5: Choosing a location

6. Click on 'Next' to accept the default file location. Figure 6 will appear.

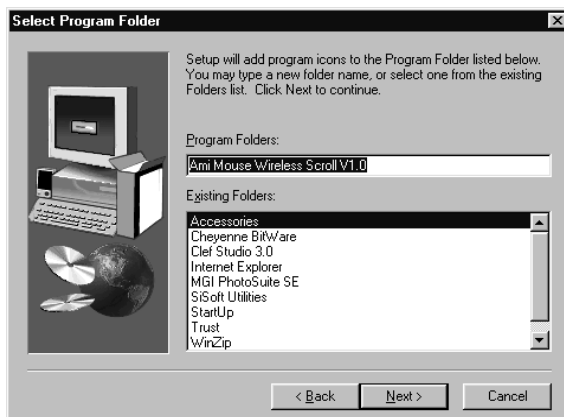


Figure 6: Selecting the program folder

- Click on 'Next' to accept the default program folder.
A number of files will be copied. When completed, Figure 7 will appear. If Windows asks for the location of any files, give the path as 'D:\application'.



Figure 7: Restarting the computer

- Click on 'Finish' to restart your computer.

ENGLISH

5. Using the Ami Mouse Wireless Scroll - Excellence Series -

Note: *This chapter only applies for Windows 95, 98 or NT4.
These functions do not work in other operating systems.*

5.1 Programming the mouse buttons

The mouse buttons must be programmed using the installed software. This is carried out as follows:

1. Double click on the mouse icon in your taskbar (Figure 8) to see the mouse properties.

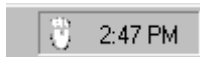


Figure 8: The taskbar icon for Windows 95 / 98 / NT

2. Click on the 'AMI Mouse Wireless Scroll' tab. Figure 10 will appear.
This gives information about the Ami Mouse Wireless Scroll - Excellence Series -

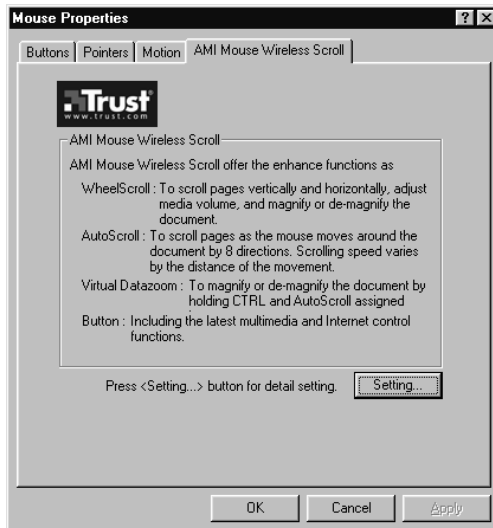


Figure 9: Mouse properties

3. Click on 'Setting...'. A new window will appear (Figure 10).

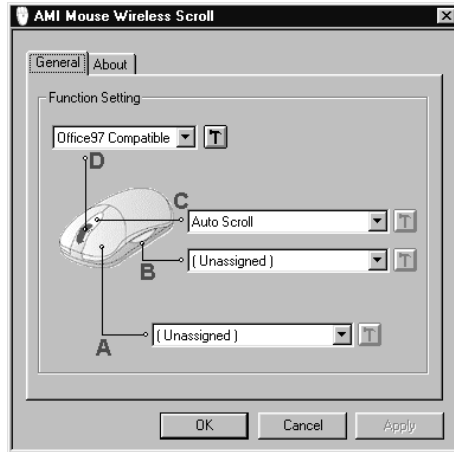


Figure 10: Programming the buttons.

4. Click on the text bar that corresponds to one of the buttons. A list will be given.
5. Now chose the function you wish to use for that mouse button.

Note: Only buttons A, B and C can be programmed. D in figure 10 is the wheel and can only be programmed as 'Office 97 Compatible' or 'Multimedia Wheel'.

6. Click on 'Apply' to save the programmed function. Click on 'OK' to close the window.

ENGLISH

5.2 Extra function settings

A number of functions from the list can also be configured separately. If you select one of these functions, the button with the hammer next to the text bar will light up.

When you click on the hammer, a new screen will be displayed where you can change the properties of the function.

The following functions have extra settings:

5.2.1 Office97 Compatible / Multimedia Wheel

1. Click the hammer next to button D (Figure 11) to see the wheel properties. Figure 11 will appear if you have chosen 'Office97 Compatible'. Otherwise, figure 12 will appear.

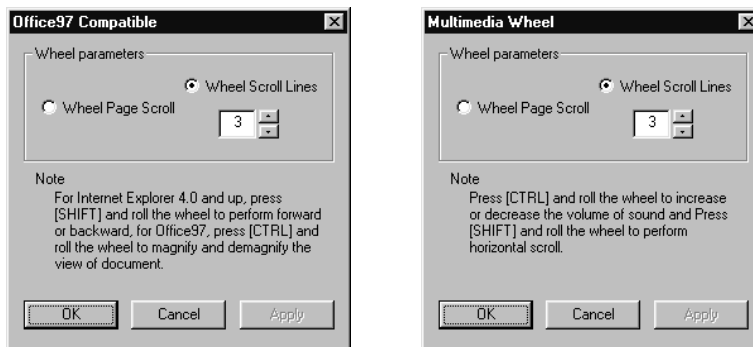


Figure 11 / 12: Programming the properties of the scroll wheel

2. Chose whether you wish to scroll down a whole page when turning the wheel or a number of lines which you select yourself.
3. Click on 'Apply' to accept these settings. Click on 'OK' to return to figure 10.

5.2.2 Zooming Lens

1. Click on the hammer next to the button to be programmed to see the Zooming Lens properties. Figure 13 will appear.



Figure 13: Setting the Zoom Lens properties

2. Click on 'Zoom Lens Size' to set the type of lens.
3. Click on 'Zoom factor' to set the magnification.
4. Click on 'Apply' to accept these settings. Click on 'OK' to return to figure 10.

ENGLISH

5.2.3 Internet Browser

1. Click on the hammer next to the button to be programmed to see the Internet Browser properties. Figure 14 will appear.

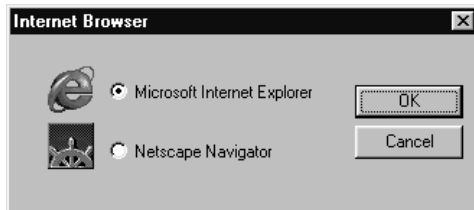


Figure 14: Selecting the Internet Browser

2. Chose which Internet Browser you wish to start when you press the button to programmed.
3. Click on 'OK' to confirm this choice.

Note: *This function only works if both Internet Browsers are installed.*

5.2.4 Internet Mailer

1. Click on the hammer next to the button to be programmed to see the Internet Mailer properties. Figure 15 will appear.



Figure 15: Selecting the Internet Mailer

2. Chose which e-mail program you wish to start when you press the button to be programmed.
3. Click on 'OK' to confirm this choice.

Note: *This function only works if both e-mail programs are installed.*

5.2.5 Launch Application

1. Click on the hammer next to the button to be programmed to select an application to launch. Figure 16 will appear.

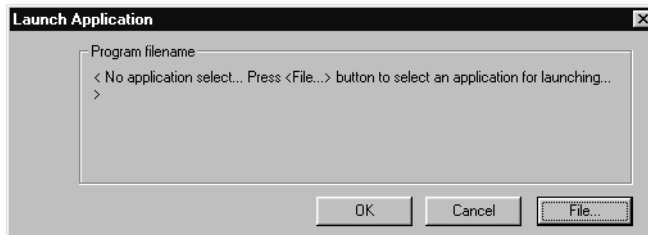
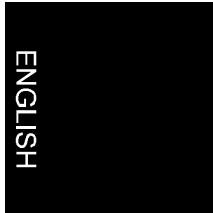


Figure 16: Selecting an application for a mouse button

2. Click on 'File...'. A new window will be displayed.
3. Chose the program you wish to start when you press the mouse button. This can be any program you wish.
4. Click on 'OK' to confirm this choice.



6. Maintenance

The moving parts of the mouse must be cleaned when the mouse does not move and/or react correctly anymore.

1. Turn off the computer.
 2. Lay the mouse upside down on the table.
 3. Remove the protective plate in the direction shown by the arrows.
 4. Remove the ball from the mouse and clean it with a clean, dry cloth.
 5. Clean the rollers in the mouse with a clean cotton bud.
 6. Replace the ball into the mouse and close the protective plate.
- Do not use an aggressive cleaner, such as petrol or white spirit, since this will attack the material.
 - Never immerse the mouse in water or another liquid.

7. Removing the driver

It is only necessary to remove the driver if you no longer wish to use the mouse. Follow the procedure below:

1. Start the computer.
2. Click on 'Start', 'Programs' and then 'Ami Mouse Wireless Scroll V1.0'.
3. Click on 'Uninstall' and follow the on-screen instructions.
The driver will be removed from your computer after the computer has been restarted.

ENGLISH

8. Troubleshooting

Problem	Cause	Possible solution
The mouse pointer does not move.	The receiver is not connected correctly.	Reconnect the receiver.
	The mouse is outside the range of the sender.	Use the mouse nearer to the sender.
	The batteries are empty.	Fit new batteries.
	The dip switches are not in the same positions.	Set them to the same positions (see Chapter 2).
	Another piece of equipment is working on the same frequency as the mouse.	Place the receiver nearer to the mouse.
	There is too much disturbance from the PC.	Place the receiver further from the PC.
Windows gives an error message when starting up.	The receiver is not connected correctly.	Connect the receiver correctly.
The scrolling function does not work.	The software has not been installed.	Install the mouse software.
	The software does not have the correct settings.	Set the software correctly.
	The application is not compatible with Windows.	Use an application that is compatible with Windows.
The mouse pointer moves erratically.	The ball and mouse are dirty.	Clean the ball and mouse.

Visit our Internet site (www.trust.com) to check the FAQs and the latest version of the driver software.

If you still have problems with your scanner after trying these solutions, please contact your dealer.

9. Specifications

Number of buttons	Four
Wheel	Vertical wheel for scrolling functions
Resolution	800 dpi
Connection	Suitable for connecting to the PS/2 port
Range	5 metres
Available channels	64 channels

ENGLISH

10. Trust Service Centres

If you have any questions after reading this manual, please contact one of the Trust Service Centres.

Keep the following in mind, however:

- If you have any questions regarding the use of a product or if you are looking for the latest drivers, you can find this information at the Trust web site (www.trust.com). The majority of the FAQ's (Frequently Asked Questions) are listed here. You can also download the latest drivers directly from the site.
- If you are unable to find the information you need at the Trust web site or if you are unable to access the site, please contact your nearest Trust Service Centre.
- **DO NOT** return any products to the Trust Support Centre addresses below. You may return the products via your Trust dealer.

ENGLISH

Country:	Contact:
UK Ireland	UK Office Internet www.trust.com E-mail trustuk@globalnet.co.uk Mail Aashima Distribution U.K. Ltd. Trust Support PO Box 5277 Witham CM8 3XU United Kingdom Fax +44-(0)1376-514633
Italy	Italian Office Internet www.trust.com E-mail trusttdp@tin.it Mail Aashima Italia s.r.l. Trust Support Via dei Pignattari, 174 Blocco 37 40050 Centergross Funo di Argelato (BO) Italia Fax 051-6635843
France North Africa	French Office Internet www.trust.com E-mail support.trust@aashima.fr Mail Aashima France sarl Trust Support BP 50002 95945 Roissy C.D.G. France Fax +33-(0)1-48174918
All other Countries	European Head Office Internet www.trust.com E-mail support@aashima.nl Mail Aashima Technology B.V. Trust Support P.O. Box 8043 3301 CA Dordrecht The Netherlands Fax +31-(0)78-6543299 For Germany only: Fax +49-(0)2821-58873