

SOUND EXPERT DIGITAL 4D

User's manual

Version 1.0

Thank You

Thank you for purchasing this product from the Trust range. We wish you hours of fun with it. We recommend that you read this manual carefully before using the product.

Registration

Register your purchase now at the Trust Internet site (www.trust.com) and you could win one of our fabulous prizes. This site also provides dealer addresses, comprehensive product information, drivers, and FAQs (Frequently Asked Questions).

Copyright Statement

No part of this manual may be reproduced or transmitted, in any form or by any means, electronic or mechanical, including photocopying, recording, or information storage and retrieval systems, for any purpose other than the purchaser's personal use, without the prior written permission of the manufacturer.

Disclaimer Statement

The manufacturer specifically disclaims all warranties, either express or implied, including but not limited to implied warranties of merchantability and fitness for a particular purpose, with respect to the software, the product manual(s) and written materials, and any other accompanying hardware. The manufacturer reserves the right to revise or make improvements to its product at any time and without obligation to notify any person of such revisions or improvements.

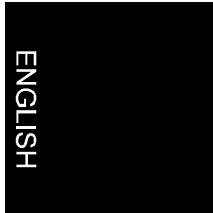
In no event shall the manufacturer be liable for any consequential or incidental damages, including any loss of business profits or any other commercial damages, arising out of the use of its product.

All company or product names are trademarks or registered trademarks or service marks of their respective owners.

Contents

1. Introduction.....	3
1.1 Conventions used in this manual.....	3
1.2 Package contents	3
1.3 Minimum System Requirements.....	4
2. Safety.....	5
3. Description of the sound card.....	6
4. Installing the sound card	7
4.1 Installing the sound cable.....	7
4.2 Completing Installation	7
5. Installing driver	8
5.1 Windows 95.....	8
5.2 Windows 98.....	11
5.3 Windows NT 4	16
5.4 MS-DOS drivers.....	19
6. Windows 95/98 Settings.....	20
6.1 Changing PCI Audio properties	20
6.2 Sample Set	21
6.3 AC97 controls	22
6.4 Speakers	23
6.5 QSound	24
7. Installing the applications	25
7.1 Starting the Setup programme	25
7.2 Trust 4D Surround Sound Demonstration.....	27
7.3 Clef Studio 3.....	30
7.4 Yamaha Software Synthesiser S-YXG50.....	31
7.5 Adobe Acrobat Reader 3.01	33
8. Trust 4D Surround Sound Demonstration	35
8.1 Starting the programme	35

8.2	Trust 4D Surround Sound Demonstration.....	36
8.2.1	General	36
8.2.2	3D Position.....	37
8.2.3	QEM™	38
8.2.4	Speakers	39
9.	Clef Studio 3.0.....	40
9.1	Starting the Programme.....	40
9.2	How it works	41
9.2.1	Clef Studio Controller.....	42
9.2.2	Clef Studio CD-Player.....	43
9.2.3	Clef Studio Wave-Player.....	44
9.2.4	Clef Studio MIDI-Player	44
10.	Yamaha SoftSynthesizer S-YXG50.....	45
10.1	Starting the programme	45
10.2	Explanation.....	46
11.	Troubleshooting	47
12.	Specifications.....	49
13.	Trust Service Centers.....	51



1. Introduction

This manual is intended for users of the Sound Expert Digital 4D sound card. Some prior knowledge is required to install and use this product.

If after reading this manual you have any questions, please contact one of the Trust service centres. You can find out about your nearest service centre at the back of this manual, or you can visit the Trust website (www.trust.com) for support, comprehensive product information, drivers and FAQ's (Frequently Asked Questions).

1.1 Conventions used in this manual

The following conventions have been used in this manual to indicate instructions:

- <key>** Here you press a key. The name of the key is given between brackets
- 'System'** This is a specific term used in a programme. Here you will find the terms used, for example, by Microsoft Windows 95.
- [DIR]** Type the text shown in square brackets [...].

Additional information will be shown as follows:

Note: *Switch off the system and any peripheral devices before opening the computer.*

The examples assume that the letter "D" refers to your CD-ROM station. If your computer uses a different drive letter for your CD-ROM player, such as "E", you should replace "D" with "E".

1.2 Package contents

Check the package contents before reading the instructions. You should find the following:

- Sound card
- Sound cable
- CD-ROM including drives and applications
- Quick installation manual

Please contact your dealer if anything is damaged or missing.

1.3 Minimum System Requirements

- Intel Pentium 166MMX processor or equivalent
- Windows 95, 98 or NT
- 32MB RAM
- Hard-disk with a minimum of 60MB free space
- Microsoft DirectX version 6

NOTE: *The Yamaha SoftSynthesizer S-YXG50 is not compatible with Cyrix 686 P+ processors. The processor must be 100% Intel compatible and must support the MMX functions (Pentium 2, Celeron, AMD etc.).*

2. Safety

Before using the product you should read the following instructions carefully:

1. Computer components are sensitive to static electricity. By touching the computer casing you discharge your body's static electricity.
2. Switch off and unplug the computer before opening the computer.
3. Make sure the components you wish to add to your computer are compatible with your system.
4. To prevent damage from static electricity, hold sound card around the edges only.

ENGLISH

3. Description of the sound card

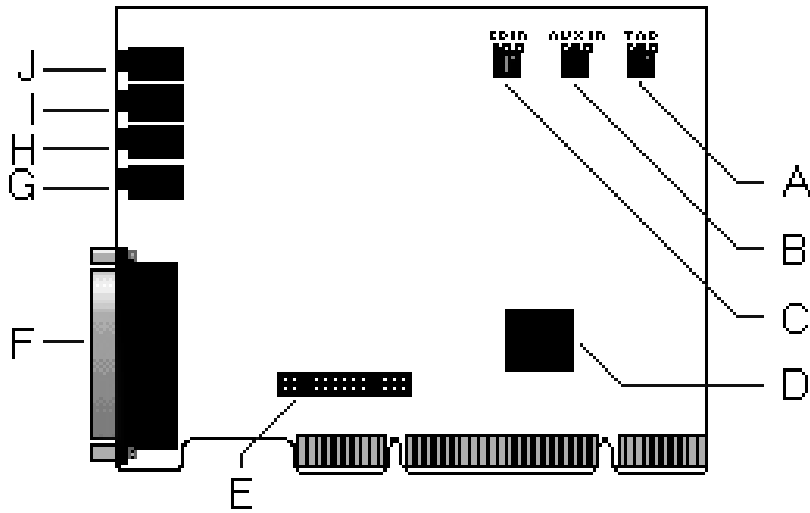


Figure 1: connecting the sound card to the computer

A	TAD	For connecting internal modem card for the audio output of a microphone or Line-In.
B	AUX-in	For connecting the internal card (e.g. Radio card) with a compatible Line-Out connection for audio transfer.
C	CD-in	Audio connection for connecting a compatible CD-ROM or DVD player (see chapter 4.1) .
D	Chip	The sound-chip of the sound card.
E	Wavetable connection	For connecting a compatible wavetable card.
F	Game / MIDI	For connecting a joystick or MIDI device.
G	Line-Out (front)	For connecting speakers or headphones
H	Line-Out (back)	For connecting a second set of speakers.
I	Line-In	For connecting for external devices, e.g. a CD-player
J	Microphone	For connecting microphone.

Table 1: Description of sound card connections

4. Installing the sound card

NOTE: Switch off your computer and connected peripheral devices before opening up your computer

1. Remove computer casing.
2. Select an available PCI slot and if necessary remove the metal cover-plate. Keep the screw, you will need it to secure the sound card.
3. Firmly but carefully insert the sound card into the PCI slot.
4. Use the screw to secure the sound card (not provided)

4.1 Installing the sound cable

1. Connect the sound cable to the Analog audio opening of your CD-ROM or DVD player (see Figure 2).

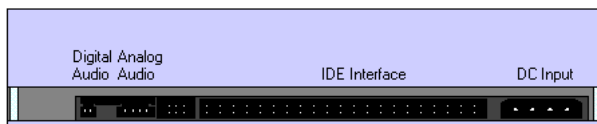


Figure 2: back of CD-ROM or DVD Player

2. Connect the other end of the sound cable to the 'CD-in' opening on your sound card (see Figure 1).

4.2 Completing Installation

1. Replace the computer casing.
2. Connect the cables.
3. Connect the speakers, headphones and/or microphone to your sound card (see Figure 1)

5. Installing driver

5.1 Windows 95

This sound card is Plug and Play under Windows 95. This means that the sound card is detected automatically.

There are several versions of Windows 95 in circulation. The images used here are from Windows version 4.00.950B.

1. Switch on your computer.
2. Start Windows 95. Figure 3 appears when the sound card is found.



Figure 3: new hardware found

3. Click on 'Next' to continue. Windows will look for the relevant driver for the system. Figure 4 pops up.



Figure 4: updating driver

- Click on 'Other locations'. Figure 5 will appear.



Figure 5: typing location

- Type [D:\Win95] on the command line and click 'OK' to continue. Figure 6 pops up.



Figure 6: installing driver

- Click on 'Finish' to continue.
Note: You will have to enter the path several times.

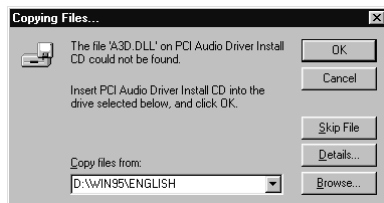
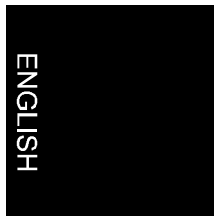


Figure 7: enter location



Sound Expert Digital 4D

- Click on 'OK' to continue. The files are now being copied. Make sure the Windows 95 CD-ROM is within reach. Figure 8 will appear after some time.



Figure 8: Unknown device found

- Click 'Next' to continue. (Figure 4)
- Click 'Other Locations' (Figure 5).
- Type [D:\Win95] on the command line and click 'OK' to continue. Figure 9 appears.



Figure 9: new hardware

- Click on 'Finish' to continue installation.
- Type [D:\WIN95] on the command line and click 'OK' to continue.

Installation has now been completed. To ensure that the sound card works properly it is recommended that you restart Windows.

5.2 Windows 98

This sound card is Plug and Play under Windows 98. This means that the sound card is detected automatically.

1. Switch on your computer.
2. Start Windows 98. Figure 10 pops up when the sound card is found.



Figure 10: new hardware found

3. Click on 'Next' to continue. Figure 11 pops up.



Figure 11: searching for driver

4. Select the option 'Search for the best driver for your device (recommended)' and click on 'Next' to continue. Figure 12 appears.



Figure 12: specify a location

5. Select the option 'Specify a location' (Figure 12)
6. Type [D:\WIN98] on the command line and click 'Next' to continue. Figure 13 appears.



Figure 13: found hardware

7. Click on 'Next' (Figure 13) to continue installing.



Figure 14: installing

8. Click on 'Next' (Figure 14) to continue installing. Files are now being copied. Figure 15 appears once this is completed.



Figure 15: installation completed

9. Click on 'Finish' (Figure 15) to finish installing. After some time a new window will appear (Figure 16) which detects new hardware.



Figure 16: new hardware found

10. Click on 'Next' to continue.
11. Select the option 'Search for the best driver for your device (recommended)' and click on 'Next' to continue (Figure 11).
12. Select the option 'Specify a location' (Figure 12).
13. Type [D:\WIN98] on the command line and click 'Next' to continue. Figure 13 pops up.
14. Click on 'Next' to continue. Figure 17 pops up.



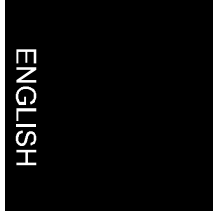
Figure 17: new hardware

15. Click on 'Next' to continue. The files are now being copied. This takes a while.

16. Click on 'Finish' to finish installing. Your sound card has now been installed.

Installation has now been completed. To ensure that the sound card works properly it is recommended that you restart Windows.

Now move on to the installation of the applications (Chapter 7).



5.3 Windows NT 4

Once you have installed the card in the computer you can install the relevant driver for this sound card. Follow the steps below to complete installation.

1. Start Windows NT4 and enter your password to log in.
2. Insert the CD-ROM into your CD-ROM player. Close all programmes before you begin installing the sound card.
3. Click 'Start' on the Windows NT taskbar.
4. Select 'Settings' and then click on 'Control Panel'. See Figure 18.

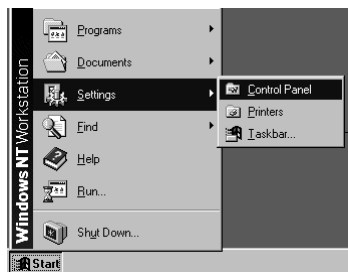


Figure 18: open settings

5. Double click on the 'Multimedia' icon. The 'Multimedia Properties' window appears. See Figure 19.

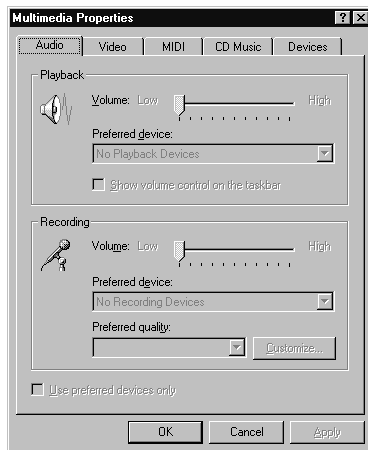


Figure 19: Multimedia settings

ENGLISH

6. Open the 'Devices' panel. Figure 20 pops up.

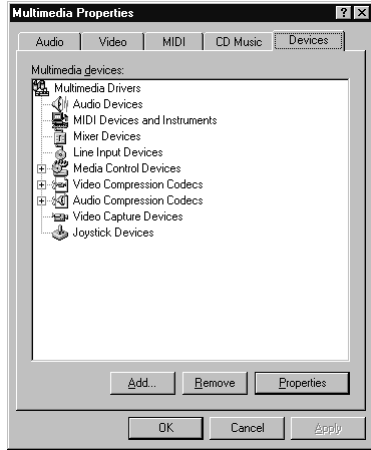


Figure 20: multimedia devices

7. Select the option 'Audio Devices' and then click on 'Add'. Figure 21.

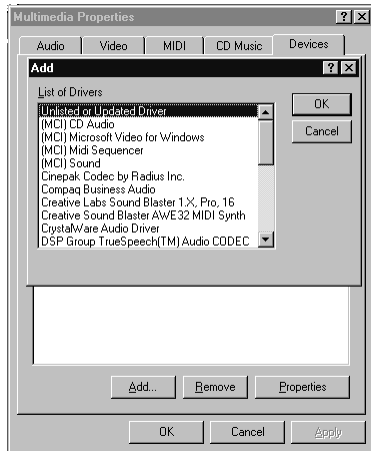


Figure 21: add devices

8. Select 'Unlisted or Updated Driver' and click on 'OK' to continue. Figure 22 appears.

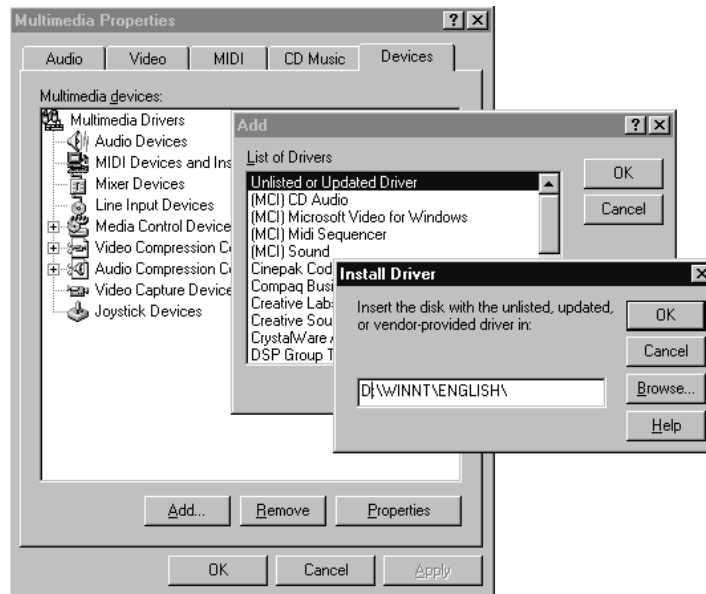


Figure 22: enter location

9. Click 'Browse' and select 'D:\WINNT\' from the CD-ROM directory and click on 'OK' to continue. Figure 23 appears.

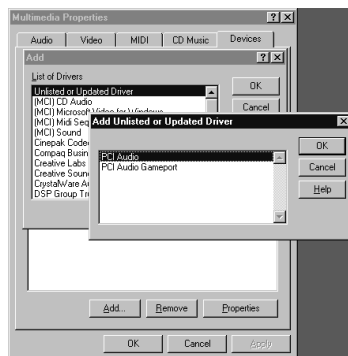


Figure 23: select device

10. Select the 'PCI Audio' option and click on 'OK' to continue. The driver is now being added to your system.
11. DO NOT restart your computer when requested.

12. Click on 'Don't Restart Now'. Figure 20 pops up.
13. Repeat steps 7 to 9 to install the joystick connection.
14. Select the 'PCI Audio Gameport' option and click 'OK' to continue. This driver is now likewise being added to your system.
15. This time do click on 'Restart Now'. Your computer restarts.
16. Your sound card has now been installed and is ready for use.

5.4 MS-DOS drivers

During installation of the drivers for Windows 95 and/or Windows 98, MS-DOS drivers are also installed.

6. Windows 95/98 Settings

Once the sound card has been installed and the computer is restarted, two new icons will have appeared on the taskbar (see Figure 24). The icon on the left (of a music bar) has also been brought into your control panel.



Figure 24: Windows 95/98 taskbar

6.1 Changing PCI Audio properties

Double click the mouse on the 'PCI Audio' icon. Figure 25 pops up.

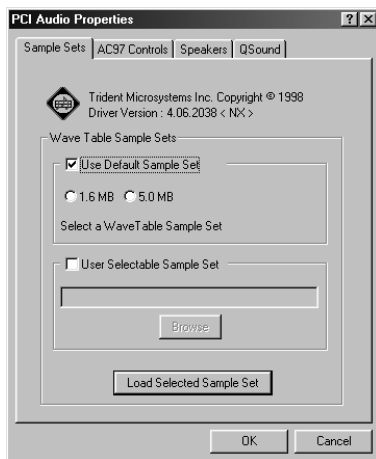


Figure 25: Audio properties

6.2 Sample Set

In the first table, 'Sample Set', you set the memory capacity for the samples.

Memory	Quality
1.6 MB	Average quality, average use of system sources.
5.0 MB	High quality, maximum use of system sources

Table 2: properties

It is also possible to select your own 'Sample set'. Select 'User Selectable Sample Set'. Click on 'Browse' to search for the file. Now click on 'Load Selected Sample Set' to activate the 'Sample Set' (Windows 95 or Windows 98 only).

Restart the computer once you have changed the settings.

6.3 AC97 controls

Open the 'AC97 controls' panel to change the 3D settings. See Figure 26.

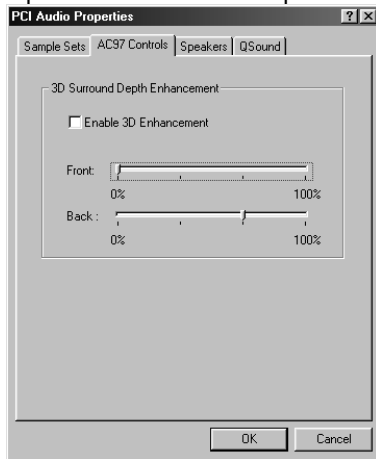


Figure 26: AC97 settings

Selecting the '3D Enhancement' option enables you to test and modify the sound depth enhancement.

An unticked box is the default setting.

6.4 Speakers

Click the 'Speakers' panel to select the settings for the speakers. See Figure 27.

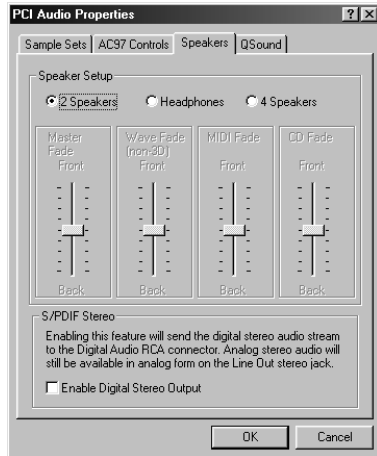


Figure 27: speakers settings

Option	Comment
2 speakers	Default setting. Use of front speakers only..
Headphones	Select this option if you wish to use headphones (not used in Windows NT).
4 speakers	Select this option for 4 speakers.
Master volume	To set the volume balance between the front and back speakers.
Wave	To set the volume balance between the front and back speakers when playing a Wave file.
MIDI	To set the volume balance between the front and back speakers when playing a MIDI file.
CD	To set the volume balance between the front and back speakers when playing an Audio CD.

Table 3 Speaker settings

S/PDIF Stereo: This sound card does not support this function.

6.5 QSound

Open the 'Qsound' panel to set the Qsound effects.

This function is not available under Windows NT 4.

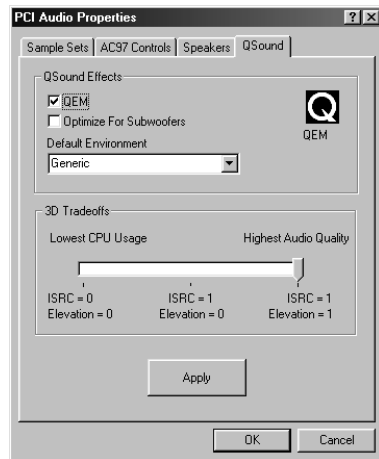


Figure 28: QSound settings

Give the QEM™ (Qsound Environment Modeling) box a tick. This is EAX™ 1.0 compatible. Users can switch this on by activating the 'Reverb' control and then selecting a 'Default environment' profile. This profile will be modified when a DirectSound™ game, which does not support EAX, is played.

EAX games have their own settings.

3D Tradeoffs

This is used to set the sound quality.

The default settings are ISRC=1; Elevation=1

7. Installing the applications

The applications on the provided CD-ROM can be installed by means of a Setup programme on the CD-ROM.

7.1 Starting the Setup programme

1. Insert the CD-ROM into the CD-ROM player;
2. Click on 'Run' in the start menu;
3. Type [D:\SETUP.EXE] on the command line.
4. Click on 'OK'. Figure 29 will appear.

ENGLISH



Figure 29: Trust Software installer

5. Select the language of your choice. Figure 30 pops up



Figure 30: Trust Software Installer

6. Select the desired option to start installing.

7.2 Trust 4D Surround Sound Demonstration

Trust 4D Surround Sound Demonstration is a programme that can demonstrate the possibilities and properties of this sound card.

Note: *This programme works under Windows 95, 98*

1. Select the option 'Install Trust 4D Surround Sound Demo' (Figure 30). Figure 31 appears after some time.



Figure 31: installing Trust 4D Surround Sound Demonstration

2. Click on 'Next' to continue. Figure 32 pops up.

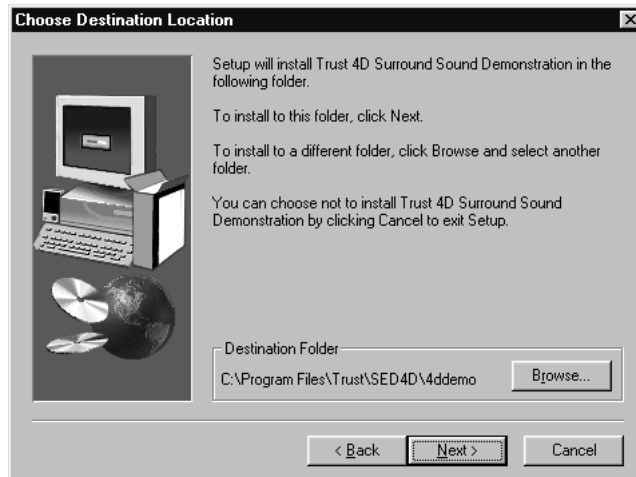


Figure 32: installing Trust 4D Surround Sound Demonstration

3. Click on 'Next' to accept the installation directory and continue installing. Figure 33 pops up.

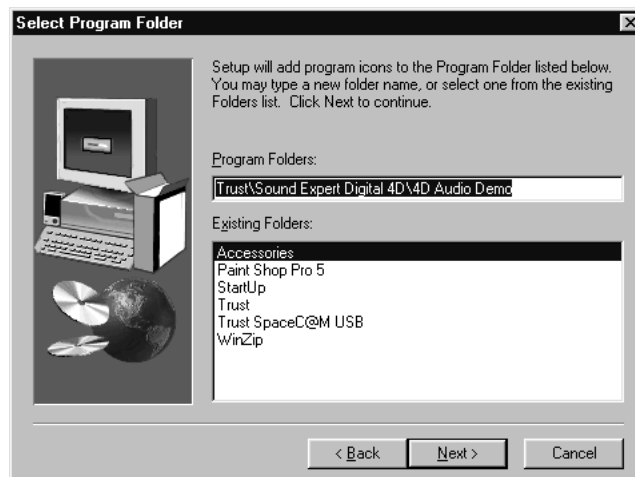
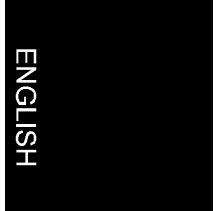


Figure 33: installing Trust 4D Surround Sound Demonstration

4. Click 'Next' to accept the programme folder. The files are now being copied.
5. Click 'Finish' to finish installing.

A folder containing the programme has been added to the start menu.



7.3 Clef Studio 3

Clef Studio 3.0 is an application for playing MIDI and Wave files. This programme can also be used to play audio CDs. Clef MIDI Tracker and Clef Wave Editor are used to edit MIDI and wave files.

This programme runs under Windows 95, 98 and Windows NT4.

Note: *Make sure the sound card is installed properly before you install this programme.*

Follow the steps below to install Clef Studio 3

1. Select the option 'Clef Studio 3.0' (Figure 30). Figure 34 pops up.



Figure 34: Trust Software Installer, select language

2. Select the language of your choice and click on 'Ok' to continue. Installation starts immediately. A new programme folder has been created.
3. Figure 30 appears on the screen once installation is finished.

7.4 Yamaha Software Synthesiser S-YXG50

The Yamaha Soft Synth S-YXG50 requires much space. It is therefore recommended that you only install this software if you are in possession of a CPU with MMX-support, preferably a Pentium-II. If your system has a CPU without MMX-support this will result in poorer sound quality.

1. Select 'Install Yamaha SoftSynth' in Figure 30. Figure 34 pops up.
2. Select the language of your choice and click on 'OK' to continue installing. The Setup programme for this software starts. Figure 35 appears.



Figure 35: installing SoftSynthesizer software

3. Click on 'Next' to continue.



Figure 36: type in user information

4. Type in your details (Figure 36) and click 'Next' to continue installing.

Note: *You will find the serial number on the CD-ROM packaging.*

Note: *The serial number is upper-case sensitive.*

5. In the next window to appear you are requested to confirm your details.
6. Click on 'Yes' to continue installing.
7. Enter the directory in which the programme is to be installed. Click on 'Next' to continue.
8. The files are now being copied to the directory indicated. This takes a while.
9. Click on 'Yes' to accept the licence agreement and continue installing.
10. Click on 'OK' in the 'Setup is completed' window to finish installing. Restart your computer when you are given the option.

7.5 Adobe Acrobat Reader 3.01

Adobe Acrobat Reader 3.01 is a programme that enables you to open PDF files. The electronic version of the manual in this format can found on the CD-ROM.

1. Click the option 'Install Adobe Acrobat Reader 3' in Figure 30. After some time Figure 37 pops up.

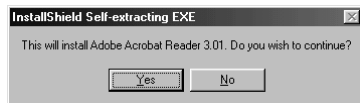


Figure 37: installing Adobe Acrobat Reader

2. Click on 'Yes' to continue. Figure 38 pops up.

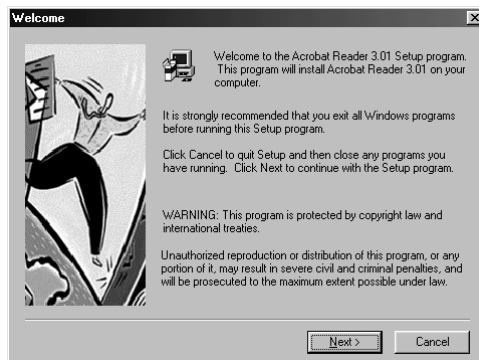


Figure 38: installing Adobe Acrobat Reader

3. Click on 'Next' to continue. Figure 39 pops up.



Figure 39: licence agreement

4. Click on 'Yes' to accept the licence agreement (Figure 39) and to continue installing.
5. Select the directory in which you wish to install the programme and click on 'Next' (Figure 40) to continue. The files will now be copied. Once this is done figure 41 will appear.

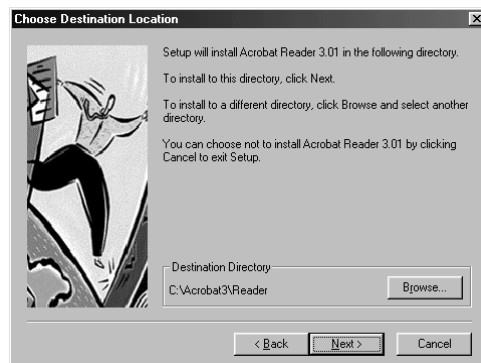


Figure 40: selecting a directory

6. Click 'Finish' to finish installing Acrobat Reader. (Figure 41)



Figure 41: finish installing

8. Trust 4D Surround Sound Demonstration

Trust 4D Surround Sound Demonstration is a programme, which can demonstrate the possibilities of this sound card.

8.1 Starting the programme

Follow the instructions below to start the programme:

1. Click on 'Start'
2. Point to 'Programs'
3. Select 'Trust', 'Sound Expert Digital 4D', 4D Audio Demo'
4. Select '4DAUDIO.exe' to start the programme (see Figure 42).

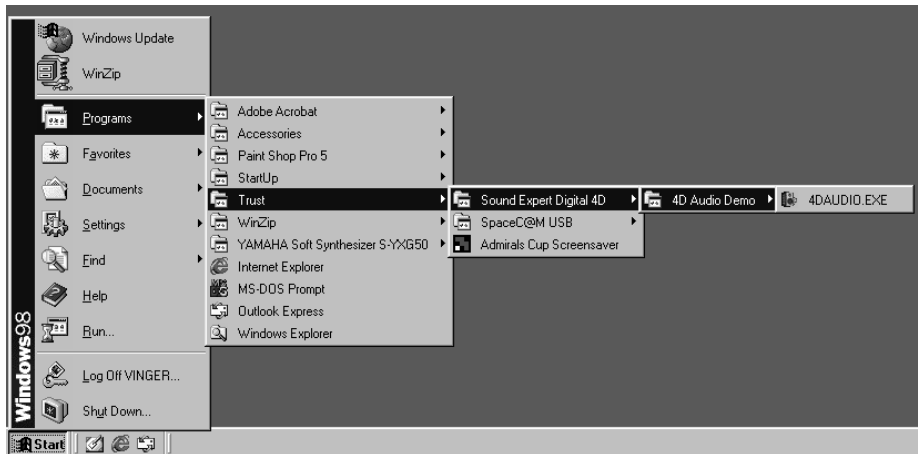


Figure 42: Trust 4D Surround Sound Demonstration programme

8.2 Trust 4D Surround Sound Demonstration

When you start this programme it opens with the 'General' panel.

To close the programme, click on 'OK'.

8.2.1 General

Select the relevant driver for the sound card. The default settings are the appropriate ones.

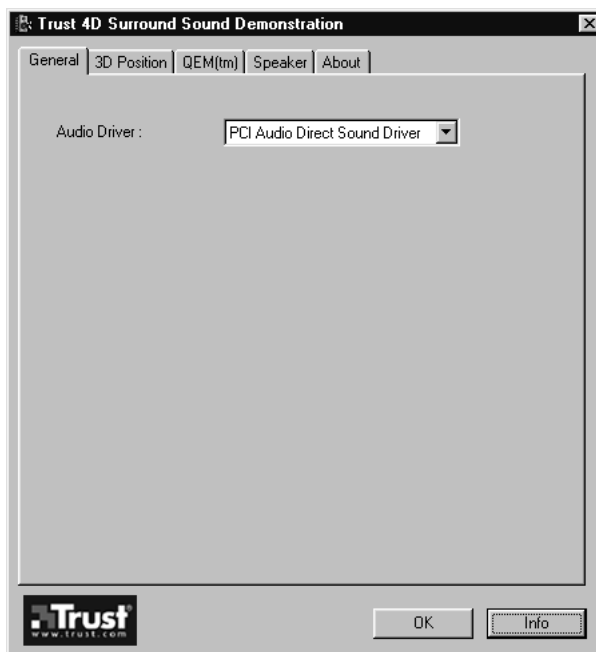


Figure 43: Trust 4D Surround Sound Demonstration

8.2.2 3D Position

Open the '3D Position' panel. Figure 44 pops up. This function enables you to allow sound to issue from various directions. The point at which the two lines intersect represents the listening position.

Click on the speakers to select a sound.

Click on one of the arrows to select the direction of sound.

ENGLISH

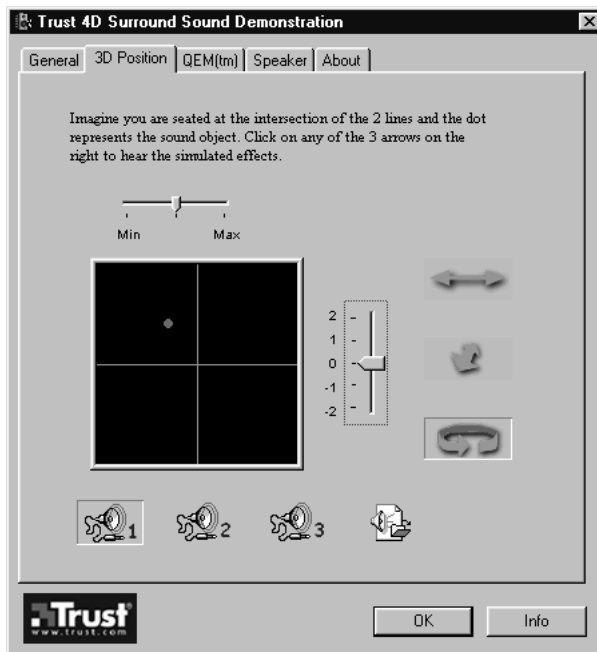


Figure 44: 3D Position

8.2.3 QEM™

NOTE: *Windows NT4 does not support this function.*

Click on the 'QEM™' panel (Figure 45).

If you have two pairs of speakers connected up this function can be used to simulate effects/environments. Changing the environment will change the spaciousness (balance, resonance etc.).

Click on speakers on the right hand side to determine the sound.



Figure 45: QEM™ function

8.2.4 Speakers

Click on the 'Speakers' panel. Figure 46 pops up.

Click on one or more of the speakers in the illustration to test the speakers and make sure they are working properly. You can also check that the speakers (Left/Right, Back/Front) have been connected up properly.

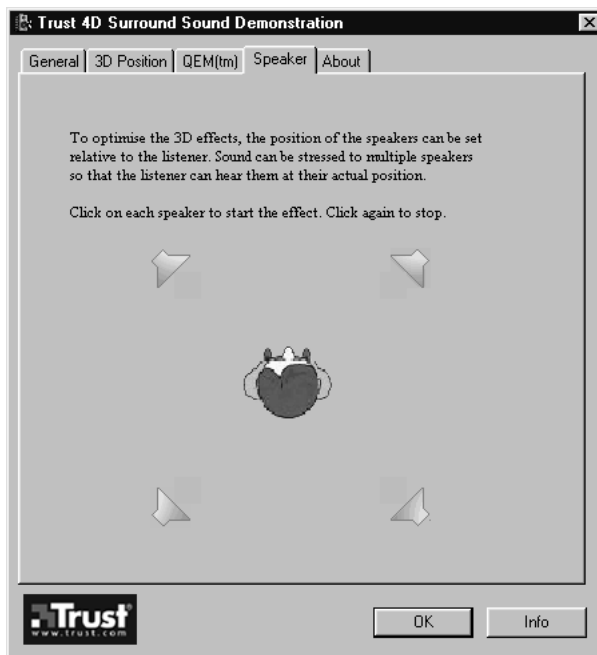


Figure 46: Speakers

9. Clef Studio 3.0

Clef Studio 3.0 is an application that is used to play various audio formats, such as audio CDs, WAV files and MIDI files.

9.1 Starting the Programme

To start the programme, follow the instructions below:

1. Click on 'Start'
2. Point to 'Programs'
3. Click on 'Clef Studio 3.0',
4. Select 'Clef Studio 3.0' to start the programme

9.2 How it works

Figure 47 appears when you start the programme.

ENGLISH



Figure 47: Clef Studio 3.0

9.2.1 Clef Studio Controller

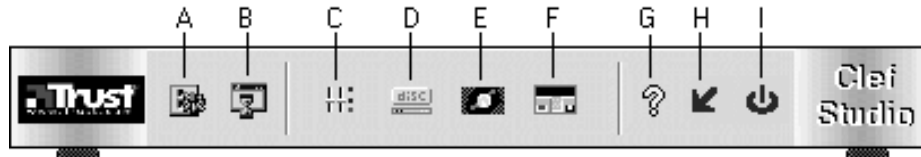


Figure 48: Clef Studio Controller

A Clef Studio Controller enables you to activate the other modules, to set the properties of certain modules and to load other modules.

A	Configure	For setting the properties of Clef Studio 3.0
B	Launch Applications	For starting, adding and removing the applications which can be opened in this window
C	Mixer	For setting the volume
D	CD	For starting or removing the Clef Studio CD-Player module (Chapter 9.2.2)
E	Wave	For starting or removing the Clef Studio WavePlayer (Chapter 9.2.3)
F	MIDI	For starting or removing the Clef Studio MIDI Player (Chapter 9.2.4)
G	Help	To start the Help function
H	Minimize	To minimize the application window
I	Close	To close the application

Table 4: controller unit functions

9.2.2 Clef Studio CD-Player



Figure 49: Clef Studio CD player

The CD player is used to play audio tracks via the CD-ROM station. The CD player appears once the CD-ROM station has been properly installed in the system.

The CD player looks like an ordinary CD player with the usual control buttons.

J	Open Album	To play the CD track list.
K	Volume	To change the volume.
L	Mute	To soften the volume
M	Lock	To lock or unlock both sound channels
N	Playback mode	To set the desired order of play such as One-by-One, Shuffle, repetition of single track etc.
O	Eject	To open and close the CD-ROM

Table 5: functions CD Player

9.2.3 Clef Studio Wave-Player



Figure 50: Clef Studio Wave-player

The Digital Audio Tape (DAT) is used to play WAV-files and record them in PCM format.

P	WaveEditor	For starting the Clef WaveEditor. This programme enables you to modify WAV files
---	------------	--

Table 6: Clef Studio Wave-Player functions

9.2.4 Clef Studio MIDI-Player



Figure 51: Clef Studio MIDI-player

The MIDI-player is used to play MIDI files or record them via a FM synthesizer and/or an optional MIDI connector built into the sound card.

Q	MIDITracker	For starting the Clef MIDITracker. This programme enables you to modify MIDI files.
---	-------------	---

Table 7: Clef Studio MIDI-player functions

10. Yamaha SoftSynthesizer S-YXG50

The Yamaha SoftSynthesizer S-YXG50 is used to play MIDI files on your computer, so that you will not need a special device to do.

10.1 Starting the programme

Follow the instructions below to start the programme:

1. Click on 'Start'
2. Point to 'Programs'
3. Click on 'Yamaha SoftSynthesizer S-YXG50',
4. Select 'XGPlayer' to start the programme.

10.2 Explanation

Figure 52 appears when you start the programme.

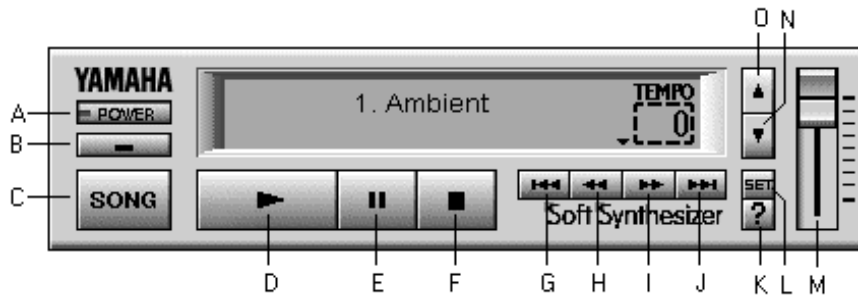


Figure 52: Yamaha Soft Synthesizer S-YXG50 control panel

A	Power	To close S-YXG50 Player.
B	Minimize	To minimize S-YXG50 Player to an icon.
C	Song	To display track list.
D	Play	To play.
E	Pause	To pause. Click again to continue playing.
F	Stop	To stop playing.
G	First Song	Back to First Song on list.
H	Previous	Back to Previous track.
I	Next	Go to Next track on list.
J	Last Song	Go to Last Song on list.
K	Help	Display Help.
L	Set	Select MIDI output port.
M	Volume	Set volume.
N	Tempo	To slow the tempo.
O	Tempo	To quicken the tempo.

Table 8: S-YXG50 control panel functions

11. Troubleshooting

If your Sound Expert Digital 4D is not working properly, check the points in the table below. If this does not take care of the problem, visit the Trust Internet site at www.trust.com or contact your dealer or Trust Helpdesk. You should keep the following information available:

- Item number;
- Windows version;
- CPU type and speed;
- Memory;
- Type and memory VGA card;
- Type of programme or game.

If you are having problems with your sound card in a particular game, also check the manual, the readme.txt-file on the CD-ROM of the game, or visit the Internet site of the game supplier.

Problem	Possible cause	Possible solution
Sound card not found following installation.	Card not secured properly	Check that the sound card has been inserted properly into the PCI slot of the computer.
No sound.	Speakers not connected properly.	Check that the speakers are connected to the Line Out on the sound card
	You are using a single pair of speakers and they are connected to the wrong opening.	Connect the speakers to the correct sound card opening.
	The volume level is set too low.	Turn up the volume in the mixer and check that the 'mute' button is not switched on.
	Drivers have been installed correctly.	Remove the sound card drivers and re-install them.

No sound	IRQ conflict	Restart the computer.
	IRQ conflict	Solve IRQ conflict in device manager
Distorted sound.	Your speakers could be either defective or of poor quality.	Check that your speakers are working properly.
	The volume has been set too high in the mixer.	Set the volume lower.
No sound in DOS-games.	Driver de-activated.	Check that the driver is active mode Type in DOS [C:\WINDOWS\SYSTEM\WAVEINIT.EXE].
No sound is registered.	Mixer settings incorrect.	Check that the record settings in the mixer are correct.
	Microphone or other source not connected properly.	Check that the source is switched on and connected properly.
The CD-ROM does not play music CDs.	Audio cable not connected.	Check that the CD-ROM audio cable is connected properly, both to your CD-ROM and to your sound card
PC slow.	CPU-load too high.	Lower the sound quality of the wavetable (See chapter 6.1).
EAX not working.	Not supported by the game.	Visit the game suppliers on the Internet to see if there is a patch available.

12. Specifications

Chipset	<ul style="list-style-type: none"> • Trident 4Dwave-NX DC'97 Chipset • Sigmatel STAC9708 18-bit dual stereo DAC Ac'97 Codec
Compatible and compliance	<ul style="list-style-type: none"> • EAX™ Emulation, • A3D™ Emulation, • Sound Blaster Pro, • MPU401 UART, • Microsoft PC'97 & PC'98
PCI Peripheral	<ul style="list-style-type: none"> • PCI Bus Master
3D Positional Audio	<ul style="list-style-type: none"> • Qsound Q3D™ positional technology for 3D interactive audio playback using only 2 speakers or 4 speakers
Accelerates DirectSound & DirectSound3D	<ul style="list-style-type: none"> • Accelerates DirectSound3D for IID (Interaural Intensity Difference), ITD (Interaural Time Difference) and Doppler effects. • Accelerates DirectSound for volume, pan and pitch shift control
EAX™ Compatibility	<ul style="list-style-type: none"> • Compatible to Environmental Audio eXtension™ using Qsound®'s Q3D™ 2.0 (Qsound Environmental Modeling™ (QEM™) technology
Wavetable Synthesizer	<ul style="list-style-type: none"> • 128+64 voice wavetable synthesis engine • Compliance with DLS (Downloadable Sound) 1.0 • Supports Microsoft® DirectMusic™ • Per channel volume and envelope control, pitch shift, tremolo and vibrato • Per channel effect processing and effect volume control for reverb, chorus and echo

Sound Expert Digital 4D

Qsound® Multi-Speaker System™ (QMSS™)	<ul style="list-style-type: none"> • Expands normal stereo source to four channel audio output
Multi-channel output	<ul style="list-style-type: none"> • Supports two and/or four speaker output • Supports output through stereo headphone
Interfaces	<ul style="list-style-type: none"> • MIDI interface • Gameport
Connectors (Internal on Board)	<ul style="list-style-type: none"> • 4 Pin MPC (Black) for CD-Audio-in • 4 Pin MPC (White) for AUX-in • 4 Pin MPC (Green) for TAD
Connectors (External)	<ul style="list-style-type: none"> • 3.5mm jack for mono microphone input • 3.5mm jack for stereo line-in • 3.5mm jack for stereo front line-out / headphone-out • 3.5mm jack for stereo rear line-out / headphone-out • Sub-D 15pin for joystick and MIDI interface

13. Trust Service Centers

If you have any questions after reading this manual, please contact one of the Trust Service Centers.

Keep the following in mind, however:

- If you have any questions regarding the use of a product or if you are looking for the latest drivers, you can find this information at the Trust web site (www.trust.com). The majority of the FAQ's (Frequently Asked Questions) are listed here. You can also download the latest drivers directly from the site.
- If you are unable to find the information you need at the Trust web site or if you are unable to access the site, please contact your nearest Trust Service Center.
- Keep in mind that the waiting time may be longer if you call between 12:00 AM and 2:00 PM.
- **DO NOT RETURN** any products to the Trust Support Center addresses below. You may return the products via your Trust dealer.

Country:	Contact:
UK Ireland	UK Office Internet www.trust.com E-mail trustuk@globalnet.co.uk Mail Aashima Distribution U.K. Ltd. Trust Support PO Box 5277 Witham CM8 3XU United Kingdom Fax +44-(0)1376-514633
Italy	Italian Office Internet www.trust.com E-mail trusttdp@tin.it Mail Aashima Italia s.r.l. Trust Support Via dei Pignattari, 174 Blocco 37 40050 Centergross Funco di Argelato (BO) Italia Fax 051-6635843
France North Africa	French Office Internet www.trust.com E-mail support.trust@aashima.fr Mail Aashima France sarl Trust Support

Sound Expert Digital 4D

Country:	Contact:
	BP 50002 95945 Roissy C.D.G. France Fax +33-(0)1-48174918
All other Countries	European Head Office Internet www.trust.com E-mail support@aashima.nl Mail Aashima Technology B.V. Trust Support P.O. Box 8043 3301 CA Dordrecht The Netherlands Fax +31-(0)78-6543299 For Germany only: Fax +49-(0)2821-58873