

TRUST EASY CONNECT 19200 PLUS

Instruction manual

Version 2.0

Thank you

Thank you very much for purchasing this product from the Trust range. We wish you hours of fun with it. Please read this manual carefully before using the product.

Registration

Register your purchase now at the Trust Internet site (www.trust.com) and you could win one of the fabulous prizes. The web site is also the place to look for dealer addresses, comprehensive product information, drivers, and FAQ (Frequently Asked Questions) sheets.

Copyright Statement

No part of this manual may be reproduced or transmitted, in any form or by any means, electronic or mechanical, including photocopying, recording, or information storage and retrieval systems, for any purpose other than the purchaser's personal use, without the prior written permission of the manufacturer.

Disclaimer Statement

The manufacturer specifically disclaims all warranties, either express or implied, including but not limited to implied warranties of merchantability and fitness for a particular purpose, with respect to the software, the product manual(s) and written materials, and any other accompanying hardware. The manufacturer reserves the right to revise or make improvements to its product at any time and without obligation to notify any person of such revisions or improvements.

In no event shall the manufacturer be liable for any consequential or incidental damages, including any loss of business profits or any other commercial damages, arising out of the use of its product.

All company or product names are trademarks or registered trademarks or service marks of their respective owners.

Contents

1.	Introduction	2
1.1	Conventions used in the manual	2
1.2	Contents	2
1.3	Minimum system requirements	2
2.	Safety	3
3.	Connecting	4
4.	Installing TWAIN and the software	5
4.1	TWAIN	5
4.2	Installing Acrobat Reader	6
4.3	TextBridge Classic 2.0	6
4.4	Scanner and camera properties	8
4.5	Installing PhotoExpress 2.0	8
5.	Scanning	12
5.1	Opening the scan dialog box	12
5.2	TWAIN dialog box	12
5.2.1	Buttons in the Preview window	13
5.2.2	Settings	13
5.2.3	TWAIN settings	14
5.3	Making a scan	16
6.	Working with TextBridge	17
6.1	Settings	17
6.2	Scanning with TextBridge Classic	18
7.	Working with Ulead PhotoExpress	19
7.1	Scanning with PhotoExpress 2.0	19
8.	Maintenance	21
9.	Troubleshooting	21
10.	Specifications	23
11.	Trust Service Centres	24

1. Introduction

This manual is intended for users of the Easy Scan 19200 Plus scanner. No prior knowledge is necessary to install and use this product.

This scanner only works in Windows 95 / 98 and Windows NT 4.0.

Note: *This scanner does not work with MS-DOS, Windows 3.1x / NT3.x. or an Apple Macintosh.*

1.1 Conventions used in the manual

This manual uses the following layout conventions for instructions:

<key> Requires the user to press a key. The key legend is shown between the brackets.

'System' This is a software-specific term, e.g. a term used by Windows.

[DIR] Text in this font is to be typed by the user.

(term) The text between the parentheses (...) is the English term, e.g. (File), referred to in the accompanying illustration.

Additional information is shown as follows:

Note: *Turn off the computer before connecting the scanner.*

1.2 Contents

After you have unpacked everything, you should have the following articles:

- Scanner
- Power supply adapter
- Interface cable
- CD-ROM containing the drivers and applications
- This instruction manual

Please contact your dealer if anything is missing or damaged.

1.3 Minimum system requirements

- Compatible PC with a 80486 CPU and 16 MB RAM
- Microsoft Windows 95 / 98 or Windows NT 4.0
- Printer port (EPP)
- A hard disk with at least 60 MB free space (for installation)
- VGA card, 256 colours
- CD-ROM drive

2. Safety

Read the following instructions carefully before use:

1. Remove the power plugs from the power sockets before cleaning the device.
2. Do not use the device in a damp environment, such as bathrooms, damp basements, swimming pools, etc.
3. Make sure that nothing is placed on the power cord.
4. Never stick anything into the slots on the outside of the device.
5. Do not try to repair the device yourself.
6. If any of the following circumstances occur, remove the plug from the power socket and have the device repaired by qualified personnel:
 - a) The cable or plug is damaged or worn
 - b) The device has come into contact with fluids
 - c) The device has fallen and/or the casing has been damaged.
7. Do not place this device in direct sunlight. Direct exposure to sunlight or excessive heat can damage the device.



GB

3. Connecting

Note: Turn off the computer before connecting peripheral devices.

Follow the steps below to connect the scanner to your computer.

1. Turn off the computer and all the connected peripheral devices.
2. Remove the printer cable plug from the parallel port at the back of your computer (if present).
3. Connect the printer cable (if present) to the 'Printer' connection at the back of the scanner (connector A, Figure 1).
4. Remove the interface cable from the packaging and connect it to your computer's parallel port.
5. Connect the other end of the interface cable to the scanner's 'Computer' connection (connector B, Figure 1).
6. Connect the cable from the power supply adapter to the scanner (connector C, Figure 1).
7. Plug the power supply adapter into the wall socket.

Your scanner (and printer) is now connected. You are ready to install the driver and the applications. You may have to re-install your printer.

Note: The scanner will be turned on and off automatically and, therefore, does not have an on/off switch.

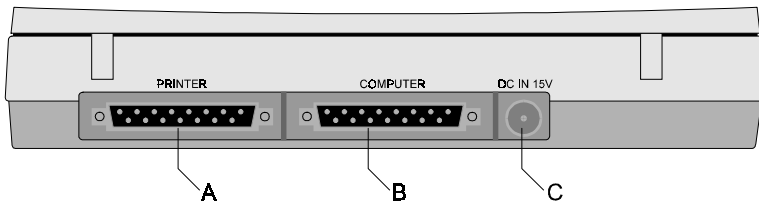


Figure 1: Rear of the scanner

4. Installing TWAIN and the software

4.1 TWAIN

Follow the steps below to install the TWAIN driver.

1. Start Windows 95, 98 or NT4.
2. Insert the CD-ROM with the drivers and TextBridge into your CD-ROM drive.
3. Click on 'Start' and select 'Run' (Figure 2).

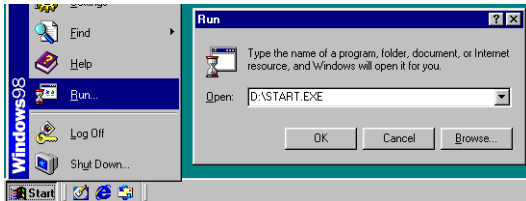


Figure 2: Starting the installation

4. In the command line, type [D:\START.EXE] and click on 'OK' (Figure 3) to start the installation.

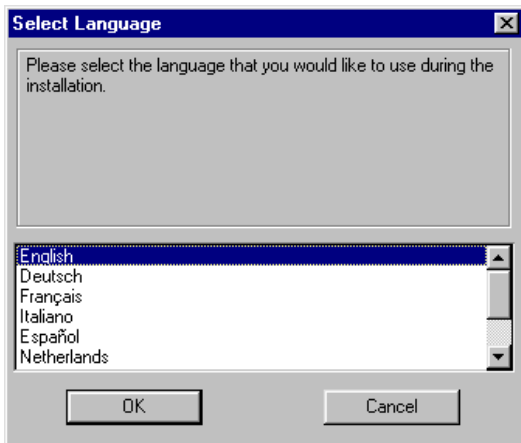


Figure 3: Selecting the language

5. Select the language you wish to use during the installation and click on 'OK' to continue.
6. The following window contains "Welcome" information. Click on 'Next' to continue. Figure 4 will appear.

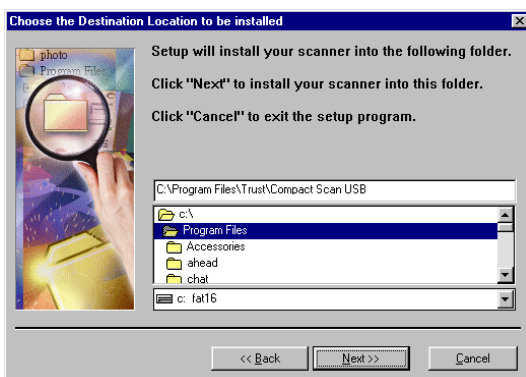


Figure 4: Choosing the installation directory

7. Click on 'Next' to accept the default directory and continue with the installation. Figure 5 will appear.

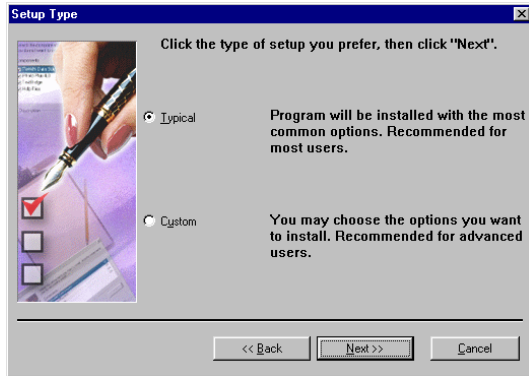


Figure 5: Choosing the type of set-up

8. Select 'Typical' to install all the components. Click on 'Next' to continue.
9. Click on 'Next' to accept the default start menu folder and continue with the installation. A summary of the components to be installed will be given in the next window.
10. Click on 'Start Install' to start the installation. The files will now be copied.

4.2 Installing Acrobat Reader

1. Click on 'OK' to accept the Acrobat Reader license agreement. The files will now be copied.

4.3 TextBridge Classic 2.0

1. Start the installation of TextBridge Classic after the installation of Adobe Acrobat Reader has been completed. Figure 6 will appear.

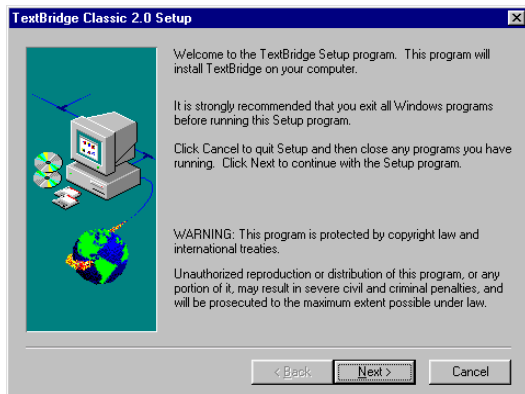


Figure 6: Installing TextBridge Classic

- Click on 'Next'. Figure 7 will appear.

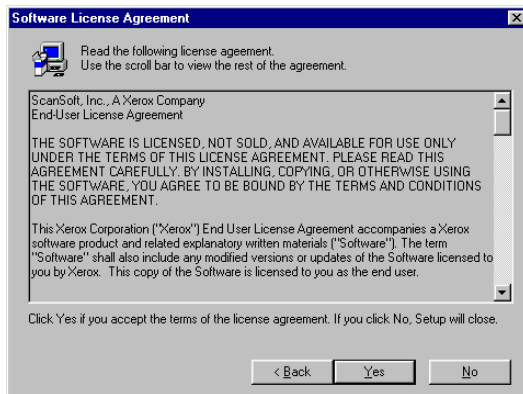


Figure 7: Licence agreement

- Click on 'Yes' to accept the license agreement and continue with the installation. Figure 8 will appear.

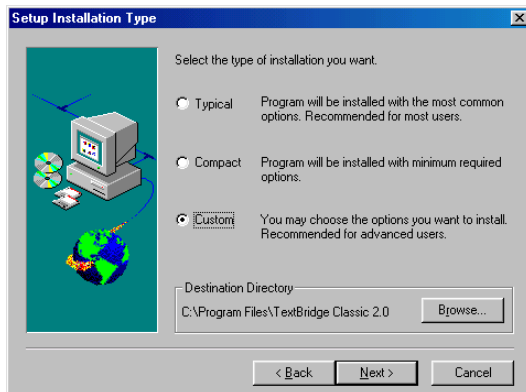


Figure 8: Selecting the type of installation

- Select 'Custom' (Figure 8), so that a bullet appears in the box.
- Click on 'Next' to continue with the installation. Figure 9 will appear.
- Click on 'Language packs' to select the languages to use (Figure 9).

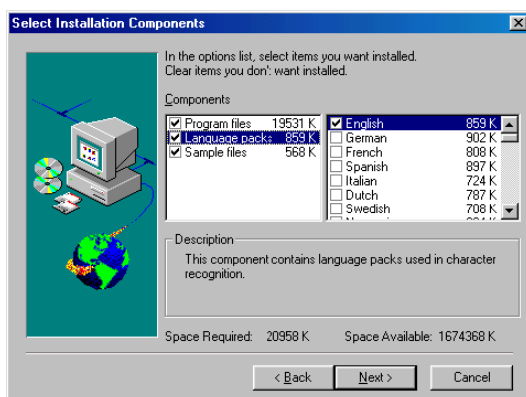


Figure 9: Selecting the languages

- Note:** You will only be able to recognize text in the languages you select. Once the installation has been completed, you will be able to add other languages for OCR at a later time.
- Click on 'Next' to continue with the installation of TextBridge Classic. A new window about the registration of TextBridge will appear.
 - Click on 'Next'. A window about product registration will appear.

9. Click on 'Cancel'. You will be asked whether you wish to cancel the product registration.
10. Click on 'Yes'. You will see a window that explains that you will receive a reminder about product registration 2 weeks after the installation of TextBridge.
11. Click on 'OK' to complete the installation of TextBridge Classic.

You have now completed the installation of TextBridge Classic 2.0.

4.4 Scanner and camera properties

After the installation, a window will appear containing the scanner and camera properties. Click on 'OK' to close the window.

4.5 Installing PhotoExpress 2.0

Ulead PhotoExpress 2.0 is an application that can be used to edit scanned images.

1. Insert the CD-ROM with PhotoExpress 2.0 into your CD-ROM drive.
2. The CD-ROM will start automatically. Figure 10 will be displayed on your monitor. Continue from point 5. If the CD-ROM does not start automatically, then it must be started manually.
3. Click on 'Start' and select 'Run'.
4. In the command line, type [D:\SETUP.EXE] and click on 'OK' to start the program. Figure 10 will appear.

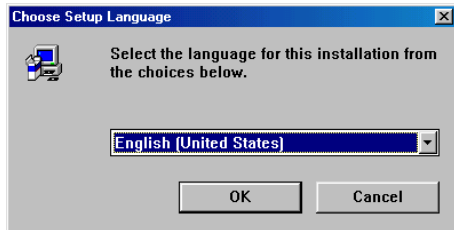


Figure 10: Installing PhotoExpress 2.0

5. Select the language you wish to use during the installation of Ulead Photo Express 2.0 and click on 'OK'. (Figure 11). The welcome window will appear.
6. Click on 'Next'. The window with the license agreement will appear (Figure 12).

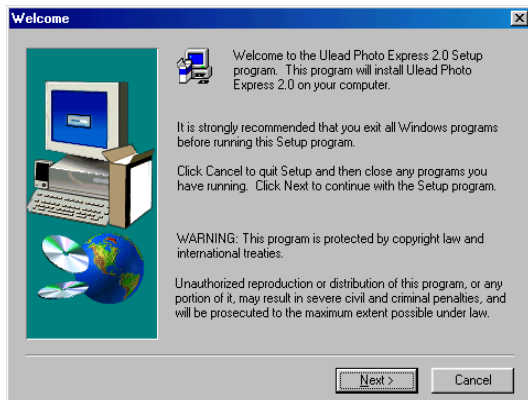


Figure 11: Welcome window

7. Click on 'Yes' to accept the license agreement (Figure 12) and continue with the installation.

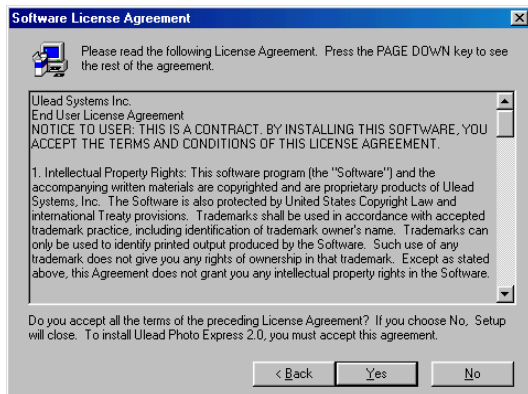


Figure 12: Licence agreement

8. Click on 'Next'. Figure 13.

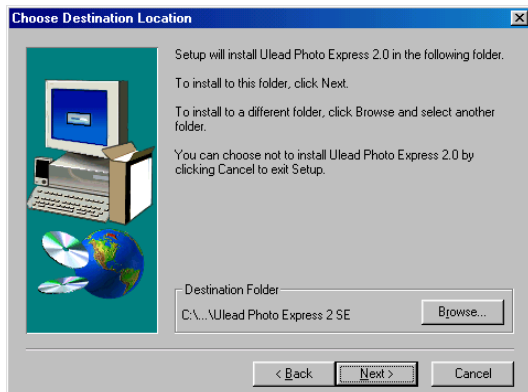


Figure 13: Installing PhotoExpress 2.0

9. Select the background colour that you wish to use (Figure 14). Click on 'Next'.



Figure 14: Installing PhotoExpress 2.0



- Click on 'Next' to accept the default program folder (Figure 15).



Figure 15: Installing PhotoExpress 2.0

- Click on 'Next' (Figure 16). PhotoExpress will now be installed. Figure 17 appears when the installation is completed.

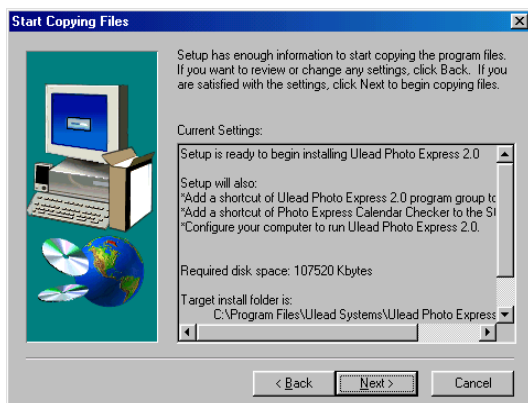


Figure 16: Installing PhotoExpress 2.0

- Only select the option 'Yes, I want... ..on the Desktop' (Figure 18).
- Click on 'Next' to continue (Figure 17).

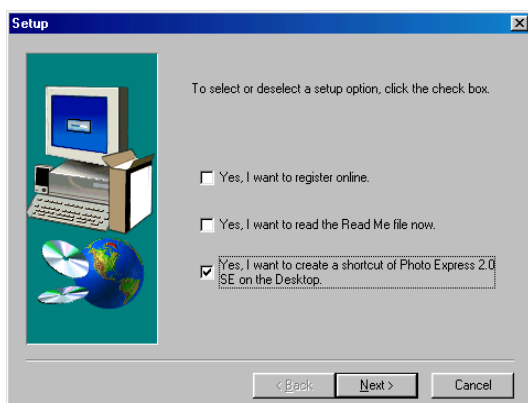


Figure 17: Installing PhotoExpress 2.0

14. Click on 'OK' to complete the installation. Figure 18 will appear.
15. Click on 'Finish' to complete the installation. Depending on the choice that you make, your computer will be restarted or you will return to Windows.

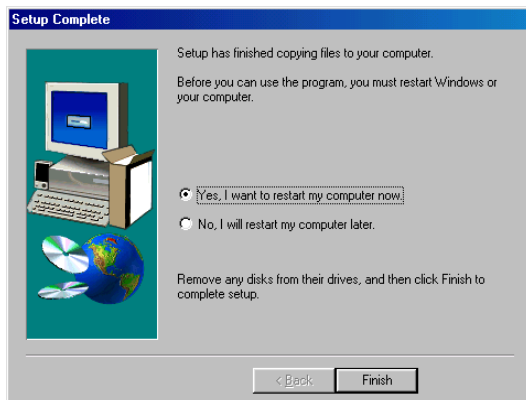


Figure 18: Completing the installation

You have now completed the installation of the TWAIN driver and the applications. If you have a modem, you can electronically register Ulead PhotoExpress 2.0. See the software's instruction manual (supplied on CD-ROM) for instructions.



5. Scanning

This scanner can be used to scan in two different ways. The first method, via the scan dialog box, is fast and easy (see chapter 5.1). The second method, via the TWAIN dialog box, offers more possibilities (see chapter 5.2).

5.1 Opening the scan dialog box

You can open the scan dialog box by double clicking on the icon in the taskbar. A window will appear after a short time (Figure 19).

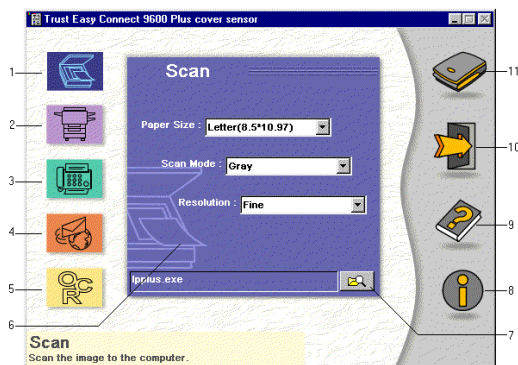


Figure 19: Scan dialog box

1	Scan window	Set-up for scanning the image or document to the selected application.
2	Copy window	Set-up for printing the image or document using the connected printer (printer required).
3	Fax window	Set-up for sending the image or document by fax (fax modem required).
4	E-mail window	Set-up for sending the image or document by e-mail (modem and Internet account required).
5	OCR window	Set-up for converting the document to a text file.
6	Menu window	Sets the paper size, scan mode, etc.
7	Browse icon	This icon enables you to select the software application you wish to transport the scanned document/image to.
8	Info	Displays information about the program.
9	Help	Opens on-line help function for the scanner and software.
10	Exit	Exits the program (remains active in the taskbar).
11	Scan	The image or document is scanned and transferred to the selected application (software, printer, fax, e-mail, OCR).

Table 1: Scan dialog functions

5.2 TWAIN dialog box

The TWAIN dialog box can be opened by scanning from a TWAIN compatible application.

1. Start the program that TWAIN supports (e.g. PhotoExpress 2.0).
2. Open the Acquire command from the file menu and select 'Select Source'. The 'Select Source' dialog box will be opened.
3. Select 'Trust Easy Connect 19200 Plus' in the 'Select Source' dialog box. This will be selected automatically if there is only 1 source available.
4. Click on the 'Select' button. The 'Select Source' dialog box will close automatically.

5. Return to the 'File' menu. Click on 'Acquire'. This is usually next to the 'Select' command. The TWAIN dialog box will appear (Figure 20).

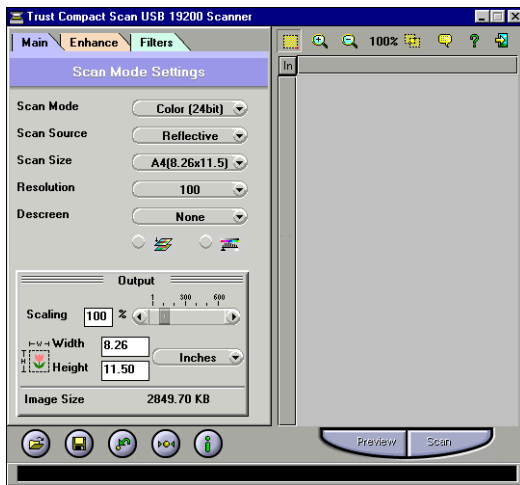


Figure 20: TWAIN dialog box

The TWAIN window consists of two sections. The left-hand section contains the TWAIN settings. The right-hand section (Preview window) shows a preview of the scanned image.

5.2.1 Buttons in the Preview window

There are a number of buttons in the preview window.

Button	Function
Cropping Tool	Selects an area in the preview window.
Zoom	Increases or decreases the size of the image in the preview window.
Batch scan	Scans several areas of a document.
Language	Sets the language used in the TWAIN window.
Help	Displays information about the scanner and software functions.
Exit	Closes the TWAIN dialog box.
Preview	Shows an example of the scan.
Scan	Makes a scan of the selected area using the selected settings.

Table 2: Preview window functions

5.2.2 Settings

Settings can be saved, loaded etc. using the buttons in the bottom left of the TWAIN window.

Load	Loads the settings.
Save	Saves the settings.
Previous	Reloads the previous settings.
Reset	Restores the default settings.
Info	Displays information about the settings.

Table 3: Settings



5.2.3 TWAIN settings

The screen with the TWAIN settings contains a number of folders. A folder can be selected by clicking on the tab using the mouse.

5.2.3.1 'Main' folder

The main folder contains settings that are necessary for specifying scan parameters.

Function	Options	Description
Scan mode	LineArt	<ul style="list-style-type: none"> Scans text. Scans black-and-white images. Use of OCR software.
	Gray	<ul style="list-style-type: none"> Scans images with a grey tint. Scans colour images that need to be converted to grey tints.
	Color 24 or 48 bits	Scans images in colour.
Scan source	Respect	Scans non-transparent images (e.g. a photograph).
Scan size	A4	Sets the scan size to 21 x 29.6 cm.
	A5	Sets the scan size to 14.8 x 21 cm.
	Letter	Sets the scan size to 8.5 x 11 inch.
	Custom	You can determine the area to be scanned yourself in this selection window.
Resolution	50 - 19200	Selects set resolutions.
	Custom	Choose a resolution yourself between 50 and 19200 dpi (only whole numbers).
Descreen	None	No descreen pattern is set.
	Newspaper	Sets a descreen pattern for a newspaper.
	Magazine	Sets a descreen pattern for a magazine.
	Art magazine	Sets a descreen pattern for an art magazine.
Colour calibration	On	Displays the image's real colours.
	Off	Displays a larger scale of colours. The image may differ from the original.
Colour balance	Maintains the colour balance between the lightest and darkest colours.	
Scale	Increases or decreases the format of the image.	
Height and width	Displays the height and width of the selected area.	
Image format	Displays the computer memory or disk space necessary to scan/save the selected area.	

Table 4: Overview of the functions in the main folder

5.2.3.2 'Enhance' folder

This folder contains settings that can be applied to the original image before making the final scan.

This folder also contains 2 small images of the preview scan. All changes made in this folder are visible in the right-hand image.

Function	Options	Description
Program selector	Master	The equal addition or reduction of all the colours.
	Red, Green or Blue	The addition or reduction of the quantity of the chosen colour.
Brightness	Sets the brightness of the image.	
Contrast	Set the contrast of the image.	
Gamma	Sets the brightness for the light, middle and darker areas separately.	
Histogram	Shows the distribution of brightness in the image.	

Table 5: Overview of the functions in the 'Enhance' folder

5.2.3.3 'Filters' folder

This folder contains settings that can be used to produce special effects. This folder also contains 2 small images of the preview scan. The selected effect is visible in the right-hand image.

Options	Description
None	Default setting. No filter is used.
Soften	Softens or weakens the image.
Sharpen	Shows more detail in a hazy image.
Invert	Converts colours into their complement.
Mirror	Gives a horizontal mirror image.
Relief	Sinks or raises elements in the image.
Unsharp mask	Looks for corners in the image and emphasizes them.

Table 6: Overview of the functions in the 'Filters' folder

5.3 Making a scan

Follow the steps below to make a scan.

1. Lay the image or document face down on the glass plate.
2. Using the mouse, click on the 'Prescan' button.
3. Select the desired scan mode (colour, greyscale, black-and-white).
4. Using the mouse, select the size of area to be scanned in the preview window or select a default size from the 'Scan Size' menu.
5. Set the resolution. 300 dpi will be sufficient for most purposes.
6. Using the mouse, click on the 'Scan' button to make a scan. The result will be copied to the currently active application.

Note: The scanning process cannot be interrupted.

6. Working with TextBridge

TextBridge is a program used for scanning text and converting it into a document so that it can be edited using a word processor. A detailed manual for this program is included on the CD-ROM.

6.1 Settings

1. Start TextBridge Classic.
2. Click on 'File'.
3. Next, click on 'Select Scanner...'. A new window will appear.
4. Select the 'Trust Easy Connect 19200 Plus'.
5. Click on 'OK'.
6. Select the language of the document to be scanned. Click on 'Process'.
7. Click on 'Settings'. A new window will appear.
8. Click on the 'Processing' tab.
9. Select the language in the 'Process With' box by clicking on the arrow for the drop-down menu and selecting the language (Figure 21).

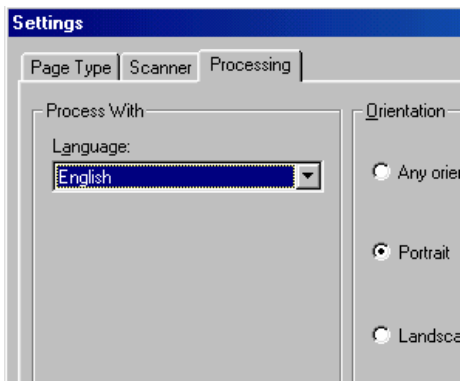


Figure 21: Selecting the language

10. Click on 'OK'.
11. You have now completed the TextBridge Classic settings. Continue to chapter 6.2.

6.2 Scanning with TextBridge Classic

Note: To show some non-English characters, e.g. Polish characters, 'Language Support' should be selected in Windows. See Windows 'Help' function for more information. You should also make sure your application is capable of showing non-English language characters.

1. Place the document to be scanned on the scanner.
2. Click on the button marked 'Auto Process' (Figure 22). A new window will be opened.



Figure 22: Auto Process button

3. Select the type of document.
4. Set 'Page Source' to 'Scanner' by clicking on it with the mouse (Figure 23).

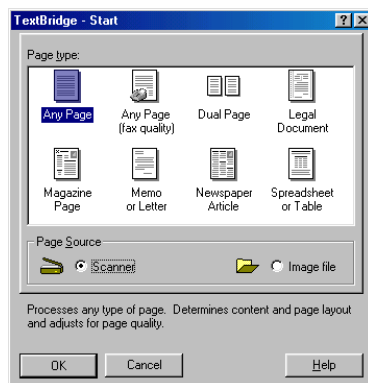


Figure 23: Selecting 'Page Source'

5. Click on 'OK'. The TWAIN dialog box (Figure 20) will now be opened.
6. Click on 'Prescan' to make a test scan.
7. Using the mouse, select the area you wish to scan.
8. Set 'Scan Mode' to 'BW' (black-and-white).
9. Set 'Destination' to 'Application'.
10. Set the resolution to 300dpi.
11. Click on 'Scan'.
12. After completing the scan, TextBridge will start the OCR process of the scanned document and ask if you wish to scan additional documents.
13. Click on 'More Pages' or 'Other Side' to scan more pages.
14. Click on 'No More' to stop scanning.
A window will then be displayed which will ask you to save the scanned text.
15. Under 'File Name', type a name for the text produced.
16. Under 'Save as Type', select the format of the file. Select a file format that will be recognized by your word processor. If in doubt, select 'ASCII Std. (*.txt)'.



17. Click on 'Save' to save the file. This completes the OCR.
18. Close TextBridge Classic.

You need a word processing program in order to edit the scanned text you have just saved to disk. Start the program and load the file you just saved in point 14.

TextBridge includes a number of advanced options. See the on-line help functions and the documentation on the CD-ROM for more information.

7. Working with Ulead PhotoExpress

Ulead PhotoExpress 2.0 is a drawing and editing program that offers a large number of options. This program can be used to edit photographed images.

Follow the instructions below to set and use PhotoExpress 2.0.

Note: *The instruction manual is included on the CD-ROM. The program also contains a comprehensive Help function.*

1. Connect the scanner to the computer (see chapter 4).
2. Start PhotoExpress 2.0 by double clicking on its icon on the desktop. The program will start. Figure 24 will appear.

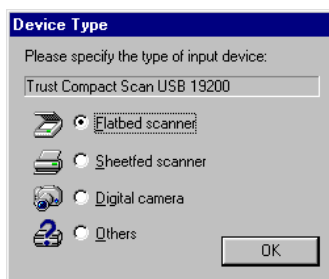


Figure 24: TWAIN settings

3. Select 'Flatbed scanner' for the 'Trust Easy Connect 19200 Plus' device.
4. Click on 'OK' to continue. If you have installed or use several devices that use the TWAIN interface, you will also need to select the appropriate device for these.

Your scanner has now been set to use this application.

7.1 Scanning with PhotoExpress 2.0

Follow the instructions below to make a scan using PhotoExpress 2.0.

1. Click on 'Get' (number 1, Figure 25).
2. Click on 'Scanner' (number 2, Figure 25).
3. In the 'Select Data Source list', select the 'Trust Easy Connect 19200 Plus Scanner' (number 3, Figure 25).
4. Select 'Apply Post Processing'. After the scan has been made, the following can be altered on the image: 'Straighten & Rotate', 'Crop', 'Brightness & Contrast' and 'Colour Balance' (number 4, Figure 25).
5. Select 'Open to workspace' to transfer the scanned image to the application or select 'Save to Album' to add the scanned image to a photograph album (number 5, Figure 25).
6. Enter a file name and select the correct file type (number 6, Figure 25).
7. Click on 'Acquire' to scan the image (number 7, Figure 25). The TWAIN window will appear (Figure 25).



Figure 25: Ulead PhotoExpress

8. Maintenance

Regularly clean the glass plate using a soft, clean cloth to remove dust and dirt. A clean glass plate is important, because dirt will show up in the scanned image.

Observe the following safety measures when cleaning the scanner:

1. Disconnect the power plug from the mains supply before cleaning the scanner.
2. Do not use aggressive cleaning liquids, liquid cleaners or aerosols to clean the scanner or the glass plate.

9. Troubleshooting

Problem	Possible cause	Solution
Scan is too dark.	Monitor is set too dark.	Adjust the brightness of the monitor.
	Number of colours of the VGA card is too low.	Set the monitor adapter to a minimum of 65,535 (16 bit) colours.
Poor quality scan.	Resolution is too low.	Set the resolution in the TWAIN driver to at least 300 dpi.
	Number of colours of the VGA card is set too low.	Set the monitor adapter to a minimum of 65,535 (16 bit) colours.
	The glass plate is dirty. Dirt on the glass plate shows up in the scanned image.	Thoroughly clean the scanner glass.
Scanner works very slowly.	Computer printer port is not set to EPP.	Set the computer's printer port in the BIOS set-up to the EEP position. See the computer's instruction manual.
	Resolution has been set too high.	In practice, a maximum resolution of 300 dpi is enough. Only use a higher resolution for small original images.
	Insufficient memory.	You need a minimum of 8MB RAM. 32 MB is recommended for Windows 95, 98 and Windows NT 4.
Error message during scan.	The hard disk is full.	You need 3 times the size of the image to be scanned as free hard disk space. The required space is shown in the TWAIN window. Free some hard disk space or choose a lower resolution.
	Selected resolution is too high.	Choose a maximum resolution of 300 dpi when scanning an area equal to A4.
	Selected area is too large.	Only choose 4800 or 192000 dpi for small original images (5 x 5 mm).
The printer does not react.	Printer is incompatible.	The scanner's printer connection can have a problem with a number of printers. It is advisable to add a printer card.
	The scanner is not connected to the power supply.	Make sure that the scanner is connected to the power supply.
	The printer works according to the GUI principle.	Use a separate printer card or connect your printer directly to the parallel port.

Error message 'Flatbed Scanner not ready' is displayed.	The interface cable is not connected.	Connect the interface cable (see chapter 3).
	The power supply adapter is not connected.	Connect the power supply adapter (see chapter 3).
Error message 'Error loading' is displayed.	The interface cable has come loose.	Connect the interfaced cable (see chapter 3).
	The power supply adapter has come loose.	Connect the power supply adapter (see chapter 3).

Visit our Internet site (www.trust.com) to check the FAQ's and the latest version of the driver.

If you still have problems with your scanner after trying these solutions, please contact your dealer.

Please have the following information ready:

1. Operating system
2. Hardware configuration
 - CPU (MHz)
 - Memory (MB)
 - Free hard disk space (MB)
 - Monitor adapter: Resolution and number of colours
3. Scanner settings
 - Scan mode (colour, greyscale, black-and-white)
 - Resolution (dpi)
 - Transfer to (application, printer, etc.)
 - Size
4. Version of the TWAIN program
5. Name and version of the application software.

10. Specifications

Type	Flatbed, CIS scanner
Optical resolution (H x V)	600 x 1200 dpi
Maximum resolution by interpolation	19200 x 19200 dpi
Scan method	<ul style="list-style-type: none"> • 1 bit black-and-white • 10 bit greyscale • 36-bit colour
Document size	210 x 297 mm (A4) 8.5 x 11 inch (Letter)
Interface	Parallel port EPP / SPP
Power source	<ul style="list-style-type: none"> • 220 Vac - 240 Vac • 50 - 60 Hz • External
Power	15 Watt
Dimensions (W x H x D)	282 x 64 x 416mm
Weight (excl. packaging)	2.3 kg



11. Trust Service Centres

Inhabitants of Great Britain and Ireland should contact:	
	GB Office
From: 9:30 - 17:00	Internet www.trust.com E-mail support-uk@trust.com Fax +44-(0)1376-514633 Tel. +44-(0)1376-500000
Inhabitants of Italy should contact:	
	Italian Office
From: 9:00 - 13:00 / 14:00 - 18:00	Internet www.trust.com E-mail support-it@trust.com Fax 051-6635843 Tel. 051-6635947
Inhabitants of France and North Africa should contact:	
	French Office
From: 9:00 - 17:00	Internet www.trust.com E-mail support-fr@trust.com Fax +33-(0)1-48174918 Tel. +33-(0)1-48174931
Inhabitants of Germany should contact:	
	German Office
From: 9:00 - 17:00	Internet www.trust.com E-mail support-de@trust.com Fax 02821-58873 Tel. 0800-00TRUST (=0800-0087878)
Inhabitants of Spain should contact:	
	Spanish Office
From: 9:00 - 17:00	Internet www.trust.com E-mail support-es@trust.com Fax +31-78-6543299 Tel. +31-78-6549999
Inhabitants of the Netherlands should contact:	
	Dutch Office
From: 9:00 - 17:00	Internet www.trust.com E-mail support-nl@trust.com Fax 078-6543299 Tel. 0800-BELTRUST (=0800-23587878) of 078-6549999
Inhabitants of all other European countries should contact:	
	European Head Office
From: 9.00 - 17.00	Internet www.trust.com E-mail support@trust.com Fax +31-78-6543299 Tel. +31-78-6549999