

Voodoo Dragon 2

---

ENGLISH

# Voodoo Dragon 2

**User Manual**

Version 1.0

## **Copyright Statement**

No part of this manual may be reproduced or transmitted, in any form or by any means, electronic or mechanical, including photocopying, recording, or information storage and retrieval systems, for any purpose other than the purchaser's personal use, without the prior written permission of the manufacturer.

## **Disclaimer Statement**

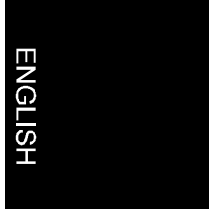
The manufacturer specifically disclaims all warranties, either express or implied, including but not limited to implied warranties of merchantability and fitness for a particular purpose, with respect to the software, the product manual(s) and written materials, and any other accompanying hardware. The manufacturer reserves the right to revise or make improvements to its product at any time and without obligation to notify any person of such revisions or improvements.

In no event shall the manufacturer be liable for any consequential or incidental damages, including any loss of business profits or any other commercial damages, arising out of the use of its product.

\* All company or product names are trademarks or registered trademarks or service marks of their respective owners.

## Table of Contents

<b>1. Introduction.....</b>	<b>2</b>
<b>2. Hardware installation.....</b>	<b>4</b>
<b>3. Software installation .....</b>	<b>6</b>
3.1 Windows 95 .....	6
3.2 Windows 98 .....	7
<b>4. Change Settings .....</b>	<b>9</b>
4.1 3Dfx Sweep .....	10
<b>5. Scan Line Interleave.....</b>	<b>11</b>
<b>6. Troubleshooting .....</b>	<b>12</b>
<b>7. Specifications .....</b>	<b>14</b>



## 1. Introduction

This manual is intended for the installation and use of the Voodoo Dragon 2. The Voodoo Dragon 2 is based on the 3Dfx Voodoo 2 Graphics chip set. For games compatible with the 3Dfx Voodoo 2 this results in both improved visual performance and better system performance, even at a higher resolution. The Voodoo Dragon 2 works in conjunction with your current VGA card by means of a loop through cable.

The illustrations in this manual may differ from what appears on your screen. In the event of any confusion, consult the manual of the Windows version you are using.

### Minimal system requirements:

- Pentium 100 processor
- 16 MB system memory
- Windows 95 or 98 operating system
- PCI or AGP VGA card
- Available PCI slot
- 4X CD-ROM drive.

Conventions in this manual:

“System”            This is a specific term used in a program; e.g., a term used in Windows.

[DIR]                Text in this font indicates that you are required to type in text.

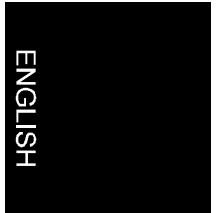
Additional information will be shown as follows:

*Note:*              *Turn off the computer before opening the casing.*

The Voodoo Dragon 2 packaging should contain the following items:

- Voodoo Dragon 2
- VGA loop through cable
- SLI (Scan Line Interleave) cable
- CD-ROM with drivers and applications
- This manual

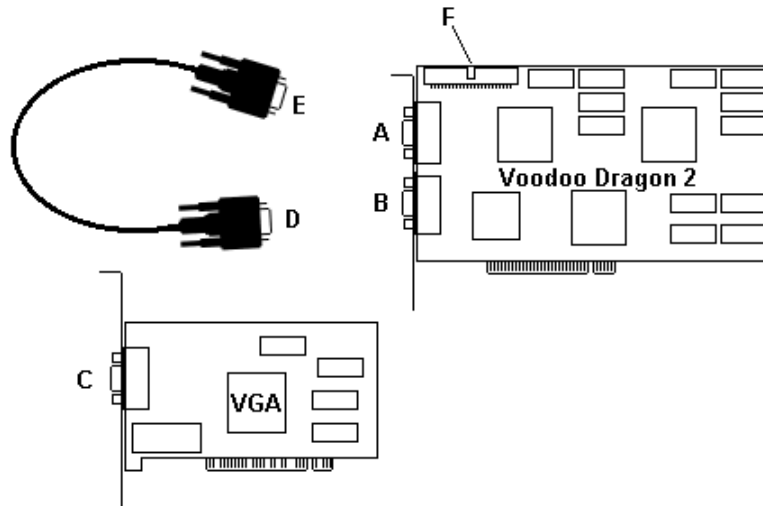
Contact your dealer if something is missing.



## 2. Hardware installation

**Note:** *Make sure that the plug has been removed from the outlet before you open the casing. You risk injuring yourself or damaging your system if you work on the PC's internal components when the PC is still connected to the electrical mains. ATX systems can activate themselves when a card is added or removed.*

1. Turn off your PC.
2. Remove the plug from the outlet.
3. Remove the casing from the computer (if necessary, consult the user manual of the computer).
4. Remove the metal cover-plate from an available PCI slot.
5. Plug the Voodoo Dragon 2 into the available PCI slot and fasten the card.
6. Re-attach the casing to the PC.
7. Disconnect the monitor plug from the computer.
8. Connect plug E to connection C (the VGA exit of your computer). See Figure 1.
9. Connect plug D to connection B.
10. Connect the monitor cable to connection A.
11. Turn on the computer.



ENGLISH

**Figure 1: Connecting the Voodoo Dragon 2**

- A VGA monitor connection (female)
- B Loop through cable connection (male)
- C VGA card connection
- D Loop through cable plug (female)
- E Loop through cable plug (male)
- F SLI (Scan Line Interleave) connection, required only if two Voodoo Dragon 2 cards are installed in 1 system.

### 3. Software installation

The Voodoo Dragon 2 complies with the Plug & Play (PnP) standard. Your system will recognise the card automatically. Follow the instructions below to install the software:

*Note: In the examples, it is assumed that your CD-ROM drive is designated by the letter "D". If your computer uses a different letter, e.g. "E", substitute "E" for "D".*

#### 3.1 Windows 95

1. Start Windows.
2. The Voodoo Dragon 2 will be found automatically and will request a driver. A screen as illustrated in Figure 2 will appear.



**Figure 2: Automatic detection in Windows 95**

3. Place the CD-ROM containing the drivers into your CD-ROM player.
4. Click on "Next".
5. Click on "Browse".
6. Enter [D:\WIN95] as path and then press <Enter>.
7. Click on "Finish". The driver has now been installed.
8. Restart your system.
9. Click "Start" on the task bar and click "Run".



10. Type [D:\DIRECTX5\DX5ENG] on the command line to install DirectX5. Then press "Enter".
11. Click on "Yes" to start the installation.
12. If prompted, select 'No' to leave the 3Dfx driver in place (see figure 3).
13. If prompted, select "OK" to restart your system.



**Figure 3: DirectX5 installation screen**

### 3.2 Windows 98

1. Start Windows.
2. Windows will automatically detect the Voodoo Dragon 2 and ask for a driver. A screen as illustrated in Figure 4 will appear.



**Figure 4: Automatic detection in Windows 98**

3. Insert the CD-ROM with drivers into your CD-ROM drive.

4. Click on 'Next'.
5. Select the option to let Windows look for the best driver. See figure 5. Click on 'Next'.



**Figure 5: Installation in Windows 98**

6. Select the option to let Windows look in a specific location (see figure 6). Enter the path name: [D:\WIN95]. Click on 'Next'.

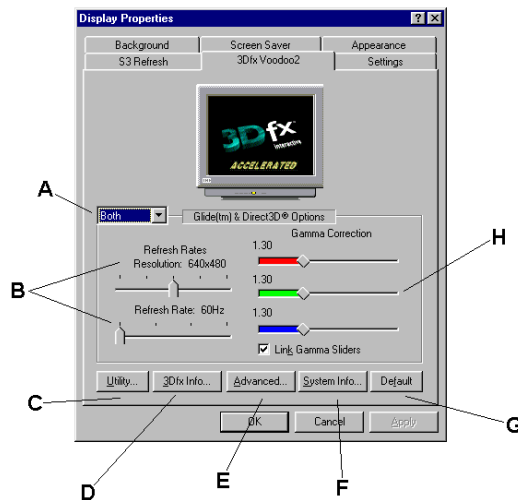


**Figure 6: Installation in Windows 98**

7. Follow the on-screen instructions, the driver will be installed.
8. Select the option to restart the system.

## 4. Change Settings

Select 'Display' in the configuration screen. Then, select the '3Dfx Voodoo2' tab sheet. At first startup, the '3Dfx Sweep' screen will be displayed. See section 4.1 for more information. The screen shown in figure 7 will be displayed.



**Figure 7: Change settings**

- A The 3D driver to which the changes apply.
- B Set 3D resolution and refresh rate. Higher values produce a more stable picture. Select a value supported by your monitor.
- C See section 4.1.
- D Information and web site URLs for 3Dfx drivers.
- E Extra display settings, for advanced users only. Incorrect settings can cause picture problems.
- F Recall Voodoo Dragon 2 properties.
- G Recall initial values.

*Note: Change settings only if necessary.*

## 4.1 3Dfx Sweep

Some games use obsolete 3Dfx drivers. These older drivers are intended for use with the first 3Dfx cards.

The Voodoo Dragon 2 uses only the latest drivers.

In order to play the older type of games using the Voodoo Dragon 2, you can update the drivers using 3Dfx Sweep. Proceed as follows:

1. On the Windows desktop, select 'Properties' or select 'Display' in the configuration screen.
2. Next, select the '3Dfx Voodoo2' tab sheet. The screen shown in figure 7 is displayed.
3. Click on 'Utility'.
4. Next, click on 'Options'. The screen shown in figure 8 is displayed.
5. Select the source to search and check the check box (top left) to select the option to let 3Dfx Sweep update the old drivers.
6. Click on 'OK'.
7. Follow the on-screen instructions.

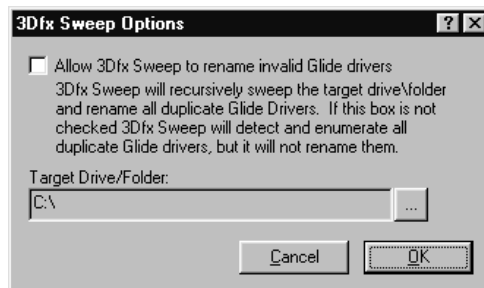


Figure 8: 3Dfx Sweep screen

## 5. Scan Line Interleave

Using the Scan Line Interleave (SLI) cable supplied, two Voodoo Dragon 2 cards can be coupled together in a single system. This makes it possible to play certain games at a resolution of 1024x768. Games performance will be greatly enhanced.

Install as follows:

1. Switch off your PC.
2. Pull the power plug from the outlet.
3. Remove the computer cover.
4. Remove the metal cover from a free PCI slot.
5. Connect the SLI cable to the SLI connection of the second Voodoo Dragon 2.
6. Insert the second Voodoo Dragon 2 into the free PCI slot and secure the card with the screw.
7. Connect the SLI cable to connection F. See figure 1.
8. Replace the PC cover.

The second Voodoo Dragon 2 will communicate through the SLI cable. The VGA loop through cable remains connected to the first card as described in chapter 2.

## 6. Troubleshooting

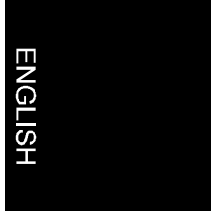
If your Voodoo Dragon 2 does not operate properly, check the points in the table below. If the listed suggestions do not remedy your problem, consult the Trust Internet Site at [www.trust.com](http://www.trust.com), or contact your dealer or the Trust help desk. For a speedy solution, have the following information ready:

- Item number
- Version number of Windows
- CPU type
- Memory
- Type and memory of VGA card
- Type of program or game

<b>Problem</b>	<b>Cause</b>	<b>Possible Solution</b>
No image	Cables are not properly connected	Check whether the cables have been properly connected (see Figure 1)
Picture loss, system reboots.	Too little power.	Replace the power supply with a heavier duty model.
Error message when starting up games	Voodoo Dragon 2 driver has not been installed	Install the driver
	DirectX has not been installed	(Re-)install DirectX
	Game uses obsolete 3Dfx driver.	Update the driver. See section 4.1.
Error message: "DLL file not found"	DirectX has not been installed	(Re-)install DirectX

Voodoo Dragon 2

Image does not improve with the Voodoo Dragon 2	Games under DOS: no patch installed.	Download patch from Internet: <a href="http://www.3dfx.com">www.3dfx.com</a> .
	DirectX has not been installed.	(Re-)install DirectX
	3Dfx Voodoo (2) not selected in game.	Select 3Dfx Voodoo (2) in game.
Wavering sound	Drivers are outdated	Use the newest driver for your sound card



## 7. Specifications

Compatibility	Diamond Monster 3D 2 card
	Creative 3D Blaster Voodoo2
	All PCI / AGP VGA card types
	PCI 2.1
EDO Memory	4 MB Frame Buffer 8 MB Texture Buffer
Direct3D acceleration	Windows 95
	Windows 98
Supporting standards	Glide (native only)
	Direct 3D
	Open GL (partially)
	Renderware
	SurRender
	Brender
	Scan Line Interleave

<b>Resolutions</b>	
512x384	
640x400	
640x480	
800x600	
1024x768	Possible only with SLI