

Sound Expert 128 PCI

ENGLISH

Sound Expert 128 PCI

User's Manual

Version 1.0

Copyright Statement

No part of this manual may be reproduced or transmitted, in any form or by any means, electronic or mechanical, including photocopying, recording, or information storage and retrieval systems, for any purpose other than the purchaser's personal use, without the prior written permission of the manufacturer.

Disclaimer Statement

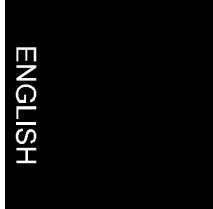
The manufacturer specifically disclaims all warranties, either express or implied, including but not limited to implied warranties of merchantability and fitness for a particular purpose, with respect to the software, the product manual(s) and written materials, and any other accompanying hardware. The manufacturer reserves the right to revise or make improvements to its product at any time and without obligation to notify any person of such revisions or improvements.

In no event shall the manufacturer be liable for any consequential or incidental damages, including any loss of business profits or any other commercial damages, arising out of the use of its product.

* All company or product names are trademarks or registered trademarks or service marks of their respective owners.

Table of contents

1. Introduction.....	2
2. Installing the card.....	3
3. Connecting.....	4
4. Installation of the software	5
4.1 Windows 95	5
4.2 Windows 98	7
4.3 Windows NT 4.0	8
4.4 DOS.....	9
4.5 Willow Pond.....	9
5. Modifying settings.....	11
5.1 Modifying MIDI settings.....	12
5.2 Modifying 3D settings.....	13
6. Troubleshooting	15
7. Specifications	17



1. Introduction

You have acquired an advanced product with the Sound Expert 128 PCI. This sound card has a better sound quality and improves your system performance in comparison to an ISA sound card.

The Sound Expert 128 PCI supports Positional 3D. This means that with games you will hear sound from all sides with just two speakers.

Minimum system requirements:

- Pentium 100 system
- Windows 95
- 8 MB memory
- An available PCI slot
- 12 MB of hard-disk space
- 4X CD-ROM player

The illustrations in this manual may differ from what appears on your screen. In the event of any confusion, consult your Windows manual.

Conventions in this manual:

<Key>	Here you press a key. The name of the key will appear between brackets.
'System'	This is a specific term used in a program; e.g., a term used in Windows.
[DIR]	You must type in text with this font.

Additional information will be shown as follows:

Note: *Turn off the computer before opening it.*

2. Installing the card

You should have the following items after unpacking the Sound Expert:

- This manual
- The Sound Expert 128 PCI
- A CD-ROM with drivers and programs

Contact your dealer if any of the items are missing.

Note: *Make sure that the plug has been removed from the outlet before you open the casing. You risk injuring yourself and damaging your system if you work on the PC's internal components when the PC is still connected to the electrical mains. ATX systems can activate themselves when a card is added or removed.*

1. Turn off your PC.
2. Remove the plug from the outlet.
3. Remove the casing from the computer. If necessary, consult your computer's User's Manual.
4. Remove the metal cover-plate from an available PCI slot.
5. Insert the sound card into the PCI slot and screw down the card.
6. Close the PC and insert the plug back into the outlet.

3. Connecting

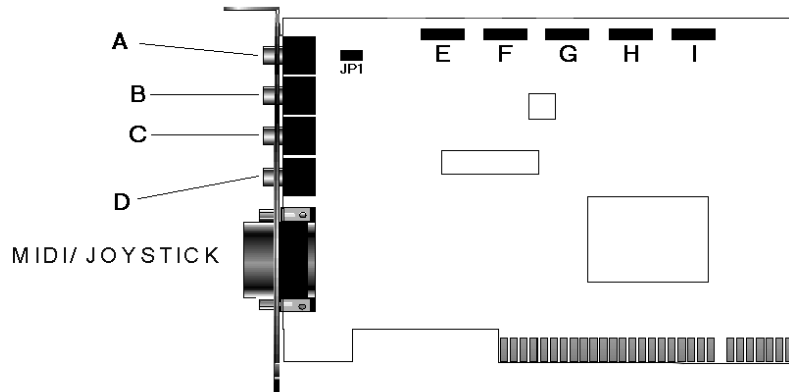


Figure 1: Connecting

Device	Connect to
Microphone	A
External source: e.g., a CD player	B
Recording source: e.g., a tape recorder	C
Speakers	D
Voice modem with internal audio connection	E
The audio cable supplied with your CD-ROM (dependent on the CD-ROM type)	F
The audio cable supplied with your CD-ROM (dependent on the CD-ROM type)	G
Audio signal of a video signal: e.g., video editing card.	H
AUX signal	I

4. Installation of the software

This chapter describes the software installation of the Sound Expert 128 PCI.

Note: The examples assume that the letter 'D:' has been assigned to your CD-ROM drive on your computer. If your computer uses a different letter, such as 'E:' for example, then substitute 'D' with 'E'.

ENGLISH

4.1 Windows 95

The Sound Expert 128 PCI complies with Plug & Play standards. Your system will recognise the card automatically.

Follow the instructions below to install the software:

1. Start Windows 95.
2. The Sound Expert will be found automatically and will request a driver. Insert the CD containing the drivers into your CD-ROM player.
3. Click 'Next'.
4. The driver will be found.
5. Click 'Finish' to start the installation.
6. The driver will be installed.
7. If DirectX 5 has not yet been installed, its installation procedure will be started automatically. A screen as illustrated in Figure 2 will appear; otherwise, go to step 12.

Sound Expert 128 PCI

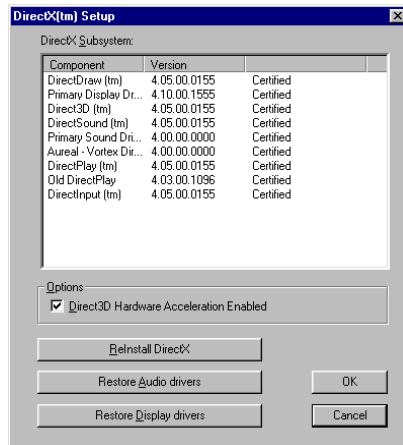


Figure 2: Installation of DirectX 5

8. Choose 'Reinstall DirectX'.
9. DirectX will check whether any DirectX components must be updated. Follow the instructions on the screen.
10. Choose to restart the computer.
11. Installation will be completed after the system has been restarted. Follow the instructions on the screen.
12. Press the 'Start' button on the taskbar and select 'Run'. Enter the following as your path: [D:\A3D_DEMO\SETUP]. Press <Enter> to install the demos.
13. The sound card is now installed.

Note: After you have pressed the 'Finish' button, certain versions of Windows 95 may ask you for the location of the driver once again. If so, click the OK button, enter [D:] as your path and press <Enter>. The driver will be installed. Choose 'Restart the computer'.

Note: DirectX 5 must be installed in order for you to make optimal use of your sound card.

4.2 Windows 98

The Sound Expert 128 PCI complies with Plug & Play standards. Your system will recognise the card automatically.

Follow the instructions below to install the software:

1. Start Windows 98.
2. The Sound Expert will be found automatically. Choose 'Next' and choose to have Windows search for a driver.
3. Click 'Next'. A screen as illustrated in Figure 3 will appear.



Figure 3: Installation in Windows 98

4. Have Windows search a particular location (see Figure 3). Enter [D:\] as your path. Click 'Next'.
5. Follow the instructions on the screen. The driver will be installed. Choose to restart the computer.
6. Press the 'Start' button on the taskbar and select 'Run'. Enter the following as your path: [D:\A3D_DEMO\SETUP]. Press <Enter> to install the demos.

4.3 Windows NT 4.0

Note: Positional 3D is not supported because it requires DirectX 5 and DirectX 5 is not available for Windows NT.

1. Press the 'Start' button on the taskbar and select 'Settings'. Then choose 'Control Panel'.
2. Double click the icon 'Multimedia'.
3. Go to the tab 'Advanced'. If no sound card drivers are present, proceed to step 5.
4. Remove any sound card drivers that may be present, restart your system and begin with step 1 again.
5. Choose 'Add' and then choose 'Unlisted or Updated Driver'. See Figure 4.
6. Enter [D:\NT40\ENGLISH] as your path and press <Enter>.
7. Click 'OK' to select the driver.
8. Then click 'OK' to complete the installation. Choose to restart the computer.

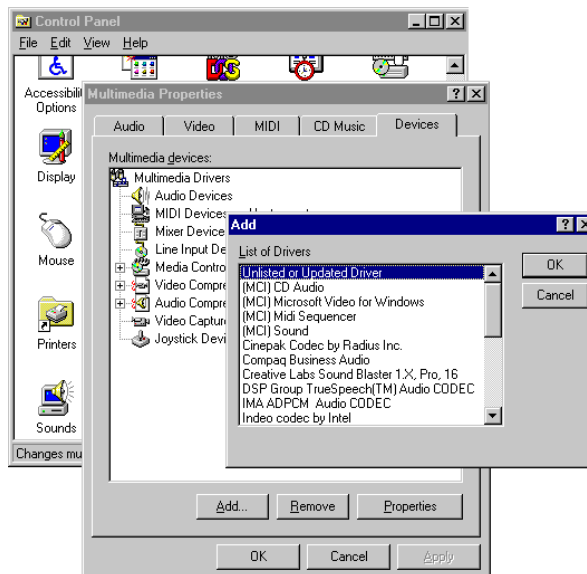


Figure 4: Installation in NT4.0

4.4 DOS

DOS drivers are installed during the installation of drivers in Windows 95 and Windows 98.

4.5 Willow Pond

Willow Pond has been included with this product. Among other features, Willow Pond comes equipped with a media rack that allows you to play music files easily and a wave editor to edit recorded sounds. Follow the instructions below to install Willow Pond.

Windows 95/Windows 98/Windows NT 4.0

1. Click 'Start' on the taskbar and choose 'Run'.
2. Enter 'D:\WP\ENGLISH\Setup' as your path and then press <Enter>.
3. You are advised to install Willow Pond in the standard directory. Press <Enter>. Willow Pond will now be installed.
4. Choose to restart your computer.

To start Willow Pond, click 'Start' on the taskbar and choose 'Programs'. Choose 'Willow Pond Audio' and select 'Media Launcher'. A screen will appear as illustrated in Figure 5.

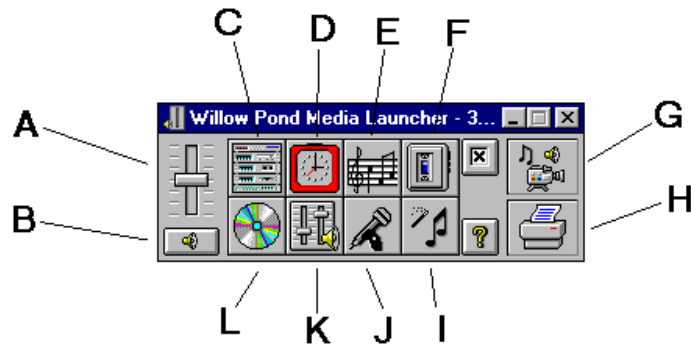


Figure 5: Willow Pond multimedia

Sound Expert 128 PCI

- | | | | |
|---|--|---|------------------------------|
| A | Windows volume control. | G | Multimedia information. |
| B | Mutes the sound. | H | Calls printer screen. |
| C | Starts the media rack (a screen as illustrated in Figure 6 will appear). | I | Starts Presto MIDI editor. |
| D | Alarm clock. | J | Starts Wave editing program. |
| E | Starts the MIDI player. | K | Willow Pond Mixer. |
| F | Starts the wave player. | L | Starts CD player. |



Figure 6: Willow Pond Media Rack

5. Modifying settings

You can modify sound settings by double clicking the sound card icon on your taskbar (see Figure 7). A screen as illustrated in Figure 8 will appear.

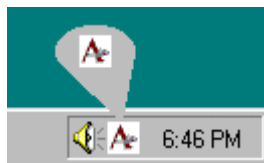
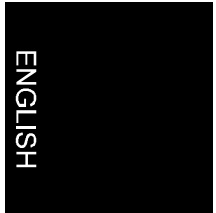


Figure 7: Sound adjustment



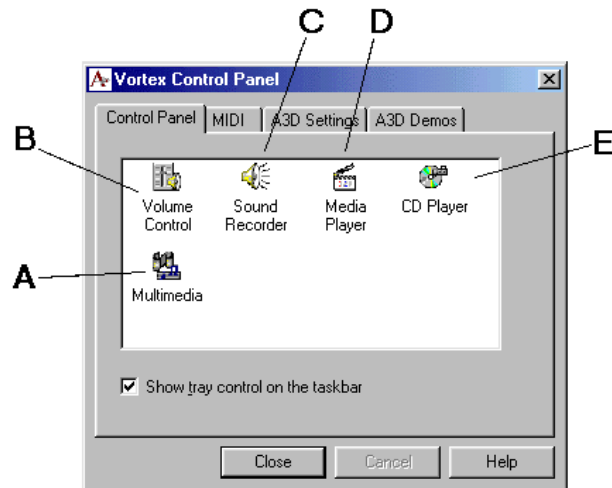


Figure 8: Modifying settings

- A Opens the Multimedia window of Windows
- B Windows Volume Control
- C Starts the Sound Recorder
- D Starts the Media Player
- E Starts the CD Player

5.1 Modifying MIDI settings

If you choose the tab 'MIDI', a screen as illustrated in Figure 9 appears. This screen enables you to adjust the following:

- The MIDI device to be used for programs in the DOS Box.
- The number of voices in combination with the wave table sound quality. The higher the sound quality, the bigger the load on the CPU.
- The effects 'Reverb' and 'Chorus' for wave table sound.

ENGLISH



Figure 9: Modifying MIDI settings

5.2 Modifying 3D settings

If you choose the tab 'A3D Settings', a screen as illustrated in Figure 10 appears. You can optimally adjust the 3D sound for a headphone or for speakers. A3D can be deactivated by means of this screen for a lower CPU load.

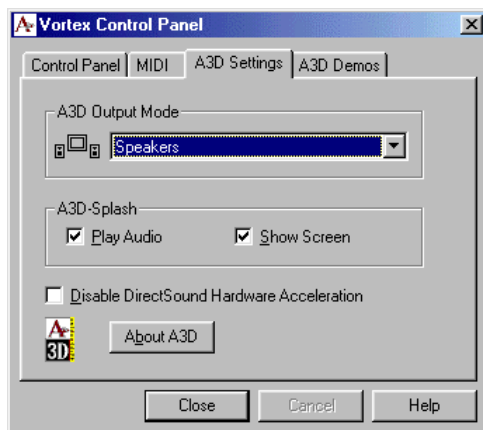


Figure 10: Adjusting 3D settings

If you choose the tab 'A3D Demos', a screen as illustrated in Figure 11 will appear. Here you can listen to the 3D settings.

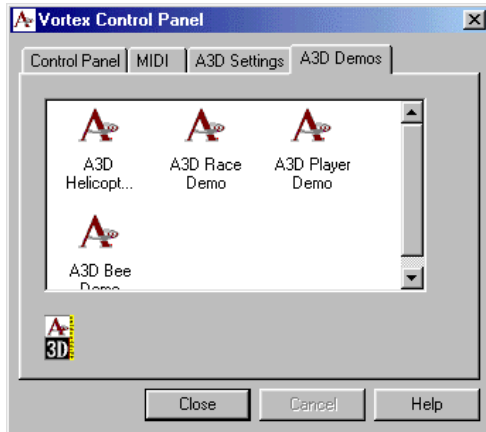


Figure 11: 3D Demos

6. Troubleshooting

If your Sound Expert does not operate properly, check the points in the table below. If the listed suggestions do not solve your problem, visit the Trust Internet Site at www.trust.com, or contact your dealer or the Trust help desk. For a speedy solution, have the following information ready:

- Article number
- Version number of Windows
- CPU type and speed
- Memory
- Type and memory of VGA card
- Type of program or game.

Problem	Possible cause	Possible solution
Sound card is not found after installation.	Card not installed correctly.	Check whether sound card has been correctly inserted into PCI slot of computer.
No sound.	Speakers are not hooked up correctly.	Check whether speakers are connected to Line-Out port of sound card.
	Volume level has been set too low.	Increase volume in mixer and check whether sound is not muted.
	Drivers are not installed correctly.	Remove all sound card drivers and re-install them.

Problem	Possible cause	Possible solution
The sound is distorted.	Speakers may be defective or of bad quality.	Check whether speakers are working properly.
	Volume level is set too high in mixer.	Decrease volume.
No sound in DOS games.	Driver is not active.	Check whether driver is active. Type [C:\ASP4DOS.COM] in DOS.
No 3D sound.	A3D is deactivated.	Go to the A3D settings (see Figure 10) and activate A3D.
Sound is not recorded.	Mixer settings are not adjusted properly.	Check whether recording adjustments are correct. You can check this by means of the mixer.
	Microphone or other source is not connected properly.	Check whether source is activated and connected properly.
CD-ROM does not play audio CDs.	Audio cable is not connected.	Check whether audio cable of CD-ROM is properly connected to both CD-ROM and sound card.
PC is slow.	CPU load is too high.	Lower sound quality of wave table (consult Chapter 5.1).
		Deactivate A3D (consult Chapter 5.2).

7. Specifications

Synthesizer:	64 Voices. General MIDI 1.0. SoundBlaster Pro I and Adlib emulation. OPL2 FM software emulation.
Digital Audio:	CD quality stereo sound. Recording quality of up to 48kHz possible. Simultaneous recording and playing.
MIDI:	Roland MPU-401 compatible.
BUS:	PCI 2.1 Compliant.
Input ports:	<ul style="list-style-type: none">• Microphone.• Line.• CD-Audio.• AUX.• Voice modem audio.
Output ports:	<ul style="list-style-type: none">• Line out.• Speaker out.
Support:	Direct Sound (Direct X) support. Positional 3D sound (DirectSound 3D).

ENGLISH

