

SCSI Scan 19200 Excellence Series

ENGLISH

SCSI Scan 19200 Excellence Series

User's Manual

Version 1.2

Copyright

Without the written consent of the manufacturer it is prohibited to reproduce or transfer any part of this manual in any format, either electronically or mechanically, as photocopy or recording, in information or search systems, other than for personal use by the purchaser.

Liability

The manufacturer accepts no liability for any explicit or implicit guarantees, including but not limited to the guarantees for saleability and suitability pertaining to a given objective with respect to the software, the enclosed product manual or manuals and written documentation and all other hardware included. The manufacturer reserves the right to modify or improve its product without prior warning or acknowledgement of any kind to third parties.

The manufacturer accepts no liability for any ensuing or accidental damages, including damages resulting in any form of business or commercial forfeiture on the strength of use of the product.

All company and product names are trademarks or registered trademarks of the relevant owners.

Preface

This manual is for users of the SCSI Scan 19200 Excellence Series. No specific knowledge is required for installation or operation of this product.

This user's manual uses the following conventions for commands:

'Configuration screen' Software term, shown on the screen.

<ENTER> Key that has to be pressed on the keyboard.

[c:\set-up] A command that is to be entered using the keyboard.

Important information is given in the form shown below:

Note: *The disk should not be formatted.*

SCSI Scan 19200 Excellence Series

Contents

1. Introduction.....	1
2. Safety First.....	2
3. Before Installation	3
3.1 Contents of the packaging	3
3.2 Transport safety catch	3
4. Installation on Apple Macintosh Computers	4
4.1 Installing the driver for the Apple Macintosh.....	4
5. Installation on PC-compatible computers.....	5
5.1 Setting up the SCSI card	5
5.2 Installing the SCSI card in your computer	6
6. Connecting the Scanner to the Personal Computer.....	7
6.1 Scanner setup.....	7
6.1.1 SCSI ID.....	7
6.1.2 Terminator	8
6.2 Connecting the scanner to the SCSI controller	8
6.3 Connecting the scanner to the current SCSI card.....	9
7. Installing the Drivers	10
7.1 Installing the SCSI card.....	10
7.1.1 Windows 3.1x	10
7.1.2 Windows 95	10
7.1.3 Windows NT 4.0	10
7.2 Installing the TWAIN driver	11
7.2.1 Windows 3.1x	11
7.2.2 Windows 95	12
7.2.3 Windows NT 4.0	13
8. Software installation for PC-compatible computers.....	14
8.1 Installing MGI PhotoSuite SE	14

SCSI Scan 19200 Excellence Series

8.1.1 Windows 3.1x	14
8.1.2 Windows 95 / Windows NT	14
8.2 Installing TextBridge.....	15
8.2.1 Windows 3.1x	15
8.2.2 Windows 95 / Windows NT	16
8.3 Installing PaperCom.....	17
8.3.1 Windows 3.1x	17
8.3.2 Windows 95.....	18
9. Working with MGI PhotoSuite SE	19
9.1 Once-only set-up.....	19
9.2 Scanning with MGI PhotoSuite SE	20
10. Working with TextBridge.....	22
10.1 TextBridge 3.0 OCR for Windows 3.1x.....	22
10.1.1 Once-only set-up of the scanner	22
10.1.2 Producing a scan with TextBridge 3.0 OCR.....	22
10.2 TextBridge Classic for Windows 95.....	24
10.2.1 Setting up the scanner	24
10.2.2 Scanning with TextBridge Classic.....	24
11. Working with PaperCom	26
12. The 'TWAIN' Window	27
13. Scanning Tips.....	31
13.1 Resolution.....	31
13.2 Scanning mode.....	31
14. Maintenance.....	32
15. Troubleshooting	33
16. Technical Specifications.....	36

1. Introduction

This scanner can be used to scan texts and images. The software supplied enables the scanned texts or images to be edited with a computer.

Some knowledge of hardware and software is required for the installation of this scanner.

Note: *This scanner does not work under DOS or OS/2.*

System requirements

PC-compatible computer	Apple Macintosh
80486 SX CPU @ 33MHz.	Mac II-, Quadra-, Performa-, Power Macintosh-, Powerbook-Series
Microsoft Windows 3.1x	System 7.0
Free 16 bit ISA slot	SCSI-2 port
Hard disk with at least 50 MB free space	Hard disk with at least 50 MB free space
16 MB RAM	16 MB RAM
Graphics card that can display at least 65.535 colours (16 bit)	Graphics card that can display at least thousands of colours
CD-ROM drive	Disk drive
	Image editor program

2. Safety First

Please read the following instructions carefully:

1. Remove the plugs from the sockets before cleaning the equipment. Do not use liquid cleaning agents or spray cans. Wipe off the equipment with a damp cloth.
2. Do not use this equipment in damp environments such as in bathrooms, damp cellars or at swimming pools etc.
3. Make sure there is nothing on the power cable. Do not place the equipment where the mains cable may be subject to wear and tear or become damaged.
4. Never insert objects into the slots on the outside of the equipment as you can touch live components. This can cause fire or severe electric shocks.
5. Never attempt to repair the equipment yourself. If you open or remove the housing, you may accidentally touch parts carrying a voltage. You may also face other hazards. This equipment may only be serviced by specially trained personnel.
6. Remove the plug from the socket under the following conditions and have the equipment repaired by specially trained personnel:
 - a) the cable or the plug has been damaged or worn;
 - b) liquid has been spilled into the equipment;
 - c) the equipment has been exposed to rain or water;
 - d) the equipment is not working normally;
 - e) the equipment has been dropped and/or the housing is damaged;
 - f) the equipment is clearly performing poorly.
7. Do not place the scanner in direct sunlight. Direct exposure to the sun or excessive heat can damage the housing.

3. Before Installation

3.1 Contents of the packaging

After unpacking you should have the following items:

- Scanner
- Mains adapter
- SCSI card
- SCSI cable
- CD with drivers and applications for the PC computer
- Disk with driver for the Apple Macintosh
- User's guide

Contact your dealer if anything is missing or damaged.

3.2 Transport safety catch

The scanner is delivered with the transport safety catch engaged. This is position 1 (figure 1). Move this to position 2 to disengage the safety catch. The switch for the transport safety catch is on the bottom of the scanner.

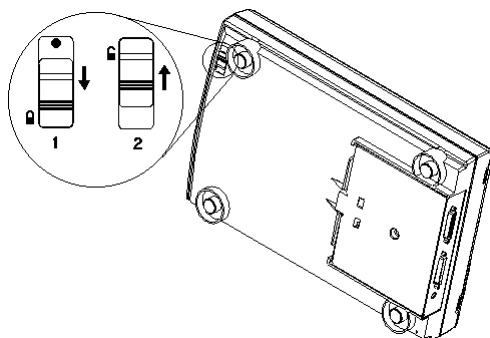


Figure 1: Transit safety catch (1 = transport, 2 = operation)

4. Installation on Apple Macintosh Computers

Note: *Only read this if you are a Macintosh computer user.*

Most Macintosh computers are normally equipped with a SCSI controller. In that case you should **NOT** install the SCSI card provided. For more information on the SCSI controller in your Macintosh computer, see the user's guide for your computer.

Before you can use the scanner, you must set the correct SCSI ID (see chapter 6.1). You must use the SCSI cable provided to connect the scanner to your Macintosh computer (see chapter 6.2).

4.1 Installing the driver for the Apple Macintosh

Note: *You must use the disk provided to install the driver for Macintosh computers.*

The driver for Macintosh systems complies with the Apple protocol. It is called "Apple-compliant Scan Driver". Before installing the driver, you must install the application software, for instance Adobe PhotoShop.

1. Insert the disk in the disk drive of your Macintosh.
2. Double click on the 'Trust Driver Kit' icon.
3. Double click in the window that opens on the 'Trust Driver Kit' icon.
4. Drag the 'Trust Driver Kit' icon to the Macintosh HD. The files are now copied to that location.
5. Select the applications that you have installed on your computer and press 'Install' to continue.
6. Click on 'Quit' to finish the installation.
7. Click on 'Restart' to start the computer again.

Note: *Press the 'Readme' button for more information about the installation of the driver.*

5. Installation on PC-compatible computers

You must place the SCSI card supplied in your computer to be able to use the scanner. When the SCSI card has been installed, you can connect the scanner.

5.1 Setting up the SCSI card

Before you install the SCSI card in the computer, you must set jumper J1 according to table 1.

Operating system	J1	Setting
Windows 3.1x	closed	Plug and Run
Windows 95	open	Plug and Play
Windows NT 4.0	closed	Plug and Run

Table 1: Jumper setting

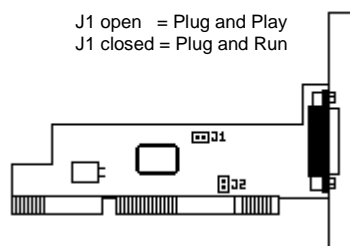


Figure 2: SCSI card jumper setting

Note: The appearance of your SCSI card may differ.

5.2 Installing the SCSI card in your computer

Note: *If your computer already has a SCSI card, you must **NOT** install this SCSI card.*

A crosshead screwdriver is necessary for removing the computer cover, and a small flat screwdriver may be necessary if the cables in your computer have been screwed down.

1. Turn your computer off, remove all connection cables from the computer and remove the computer cover.
2. Look for a free 16 bit ISA slot and remove the slot cover.
3. Place the SCSI card in the ISA slot and press it in firmly, so that the contacts make good contact with the motherboard.
4. Screw the SCSI card firmly in.
5. Replace the cover on the computer and reconnect all connection cables.

6. Connecting the Scanner to the Personal Computer

6.1 Scanner setup

6.1.1 SCSI ID

You can connect a maximum of seven pieces of external SCSI equipment to your computer. Each piece of SCSI equipment in the same chain must be provided with a unique ID number between 0 and 6 (devices may not share the same number).

The equipment with the lowest ID number (the hard disk, for instance) is the first to be accessed in the SCSI chain. It is best to use ID number 4, 5 or 6 for your scanner.

You can set the ID number for this scanner using the dip switches on the back of the scanner (see figure 3).

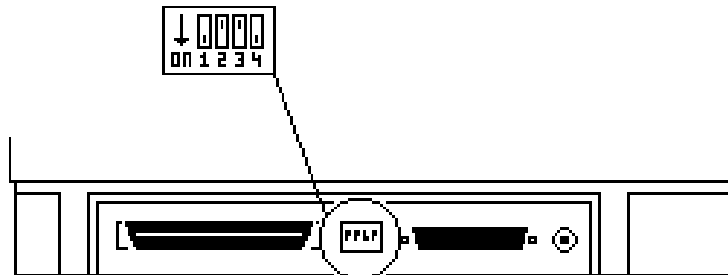


Figure 3: Dipswitch location

Table 2 shows the possible ID settings. These settings are also shown on the back of the scanner.

ID:	0	1	2	3	4	5	6
SW1	ON	OFF	ON	OFF	ON	OFF	ON
SW2	ON	ON	OFF	OFF	ON	ON	OFF
SW3	ON	ON	ON	ON	OFF	OFF	OFF

Table 2: ID settings

6.1.2 Terminator

The first and the last pieces of equipment in a SCSI chain must be provided with a terminator. Therefore, the other pieces of equipment in the chain do not need this. With SW4 you can set the terminator (see table 3).

Note: *If you are connecting only the scanner to your SCSI card, SW4 must be switched on.*

Terminator	switched on	switched off
SW4	ON	OFF

Table 3: Terminator

6.2 Connecting the scanner to the SCSI controller

Note: *Turn the computer and the SCSI device off when you are connecting or disconnecting this equipment. If the computer or this equipment are on, the equipment can be damaged.*

1. Take the interface cable out of the packaging.
2. Attach the 50 pin Centronics connector to your scanner (the connector on the left).
3. Attach the 25 pin Sub-D connector to the SCSI controller of the computer.
4. Connect the mains adapter to the scanner.

5. Insert the mains adapter plug in the socket.

6.3 Connecting the scanner to the current SCSI card

Note: Refer to the user's guide of your SCSI card for settings.

You can connect the scanner directly to the SCSI card, or as the last piece of equipment in the SCSI chain. Take the following points into account:

1. If you connect the scanner as the last piece of equipment in the SCSI chain, the terminator of this equipment must be switched on.
2. If this SCSI card is the only internal SCSI equipment, the terminator of the SCSI card must be switched on. If there are several pieces of internal SCSI equipment, these must be switched off.
3. The existing SCSI card and the other connected devices already have a SCSI ID. When you choose a SCSI ID, you must be sure that this number is not already being used by the card or other SCSI' equipment.

Note: Ensure that your scanner is turned on before turning on the computer.

Check whether the connector of the SCSI cable fits on the SCSI card. If the cable does not fit, you must purchase a new cable from your dealer.

Windows 3.1x

Make sure that the ASPI driver provided with the SCSI card has been installed in Windows 3.1x. The ASPI driver handles the communication between the SCSI card and DOS/Windows 3.1x. This program is compatible with CD-ROM drives, removable hard disks and scanners.

Windows 95 and Windows NT 4.0

For Windows 95 or Windows NT 4.0, you must **NOT** install the ASPI driver.

7. Installing the Drivers

All the files required to install the drivers and the application software are on the CD-ROM.

7.1 Installing the SCSI card

7.1.1 Windows 3.1x

The SCSI card must be set up as Plug and Run.

When the TWAIN driver is installed, the SCSI card is automatically installed.

You can proceed immediately with the installation of the TWAIN driver (chapter 7.2.1).

7.1.2 Windows 95

The card must be set up as Plug and Play. When you start Windows 95, the card is automatically detected.

When Windows 95 locates the new hardware, you are asked for the directory. The SCSI card driver is located in the D:\SCSI directory on the CD-ROM.

After the SCSI card has been installed, you install the TWAIN driver (chapter 7.2.2).

7.1.3 Windows NT 4.0

To be able to use this SCSI card under Windows NT 4.0, you must set it up as Plug and Run.

1. Click on 'Settings' in the Start menu, and then on 'Control Panel'. The control panel now appears on your screen.
2. Click on 'SCSI Controllers'.
3. Select the 'Drivers' tab.
4. Click on 'Add'.
5. Click on 'Have Disk'.
6. Enter the path (D:\SCSI) of the location of the driver.

7. Click on the product name and then on 'OK'. Now follow the instructions on your screen. When the SCSI card has been installed, you must restart the computer.

7.2 Installing the TWAIN driver

The TWAIN driver is the software that drives the scanner. All the applications that work with your scanner use this driver. You must, therefore, install at least the TWAIN driver in order to be able to operate the scanner.

7.2.1 Windows 3.1x

1. Start Windows 3.1x.
2. Place the CD in your CD-ROM drive.
3. In 'Program Manager' select the 'Run' option from the 'File' menu (see figure 4).

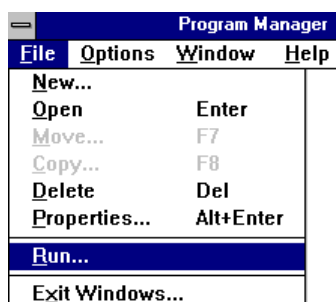


Figure 4: Installation under Windows 3.1x

4. Type [D:\SETUP.EXE] in the command line. Click on 'OK' (see figure 5). The installation program starts (see figure 7).
5. Click on 'Scanner Driver' and follow the instructions on screen.

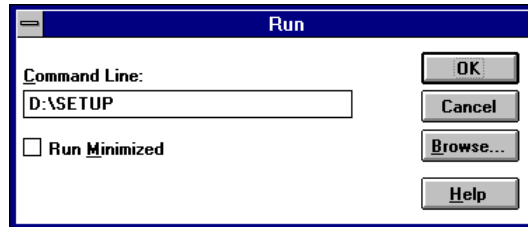


Figure 5: Starting installation under Windows 3.1x

6. In the 'Select SCSI card type' window, select 'DTC 3181E/3151 SCSI Card' and click on 'Next' to continue. Select 'Adaptec 1502E SCSI Card' if you have an Adaptec 1502E SCSI card. Select 'Exist ASPI SCSI Card' for the other SCSI cards.
7. In the menu select the language you want to use and follow the instructions on the screen. Installation takes a few minutes.
8. Restart Windows once the installation is complete.

7.2.2 Windows 95

1. Start Windows and insert the CD in your CD-ROM drive.
2. Select 'Run' in the Start menu.
3. Type [D:\SETUP.EXE] in the command line and press <ENTER> (see figure 6). The installation program starts (see figure 7).

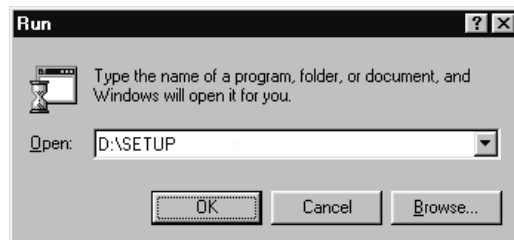


Figure 6: Starting the installation program

4. Click on 'Scanner Driver' and follow the instructions on screen.
5. In the menu select the language you want to use and follow the instructions on the screen during installation. Restart the computer once the installation of the TWAIN driver is complete.

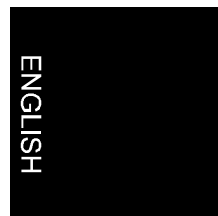
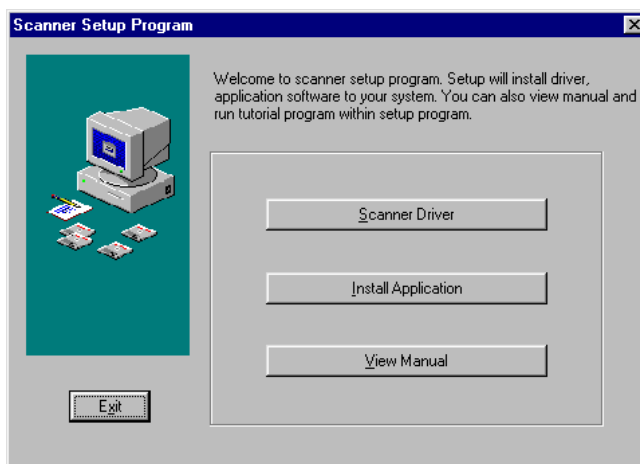


Figure 7: Main window for the installation

See the next section for details of installing the applications.

7.2.3 Windows NT 4.0

1. Start Windows and insert the CD in your CD-ROM drive.
2. Select 'Run' in the Start menu.
3. Type [D:\SETUP.EXE] in the command line and press <ENTER> (see figure 6). The installation program starts (see figure 7).
4. Click on 'Scanner Driver' and follow the instructions on screen.
5. In the 'Select SCSI card type' window, select 'DTC 3181E/3151 SCSI Card' and click on 'Next' to continue. Select 'Adaptec 1502E SCSI Card' if you have an Adaptec 1502E SCSI card. Select 'Exist ASPI SCSI Card' for the other SCSI cards.
6. In the menu select the language you want to use and follow the instructions on the screen. Installation takes a few minutes.
7. Restart Windows once the installation is complete.

8. Software installation for PC-compatible computers

8.1 Installing MGI PhotoSuite SE

MGI PhotoSuite is a program for scanning and editing images.

8.1.1 Windows 3.1x

1. Restart Windows 3.1x.
2. Place the CD in your CD-ROM drive.
3. In 'Program Manager' select the 'Run' option from the 'File' menu. See figure 3.
4. Type **[D:\SET-UP.EXE]** in the command line. Then click 'OK'. See figure 4. After a few seconds, the installation program starts. See figure 6.
5. Click on 'Install Application'. A new window will be visible.
6. Click 'PhotoSuite'.
7. Select the language in which you wish to install MGI PhotoSuite SE.
8. Follow the instructions on the screen. Installation takes a few minutes.

Now go to the 'Installing TextBridge' chapter.

8.1.2 Windows 95 / Windows NT

Note: *The MGI PhotoSuite program can also be installed by starting the program **[D:\editor\editor.exe]**.*

1. Restart Windows.
2. Place the CD in your CD-ROM drive. The program usually starts automatically. If so, go on to item 5.
3. If your CD-ROM does not start automatically, click 'Start' with the mouse and select 'Run'.
4. Type **[D:\SET-UP.EXE]** in the command line and press **<ENTER>**. See figure 5. After a few seconds, the installation program starts. See figure 6.

5. Click on 'Install Application'. A new window will be visible.
6. Click 'MGI PhotoSuite'.
7. Select the language in which you wish to install MGI PhotoSuite SE.
8. Follow the instructions on the screen.

Now go to the 'Installing TextBridge' chapter.

8.2 Installing TextBridge

TextBridge is intended for scanning and recognising texts. The scanned text is converted into real text which you can later edit using a word processor. Retyping thus becomes superfluous.

8.2.1 Windows 3.1x

1. Restart Windows 3.1x.
2. Place the CD in your CD-ROM drive.
3. In 'Program Manager' select the 'Run' option from the 'File' menu. See figure 3.
4. Type **[D:\SET-UP.EXE]** in the command line. Then click 'OK'. See figure 4. After a few seconds, the installation program starts. See figure 6.
5. Click on 'Install Application'. A new window will be visible.
6. Click 'Xerox TextBridge'. The TextBridge installation window is displayed.
7. Select the language you wish to use during installation and click 'OK'. A TextBridge 3.0 OCR installation screen appears.
8. Click 'Continue'.
9. Click 'Accept' to accept the licence agreement.
10. Click 'Continue' to install TextBridge 3.0 OCR.
11. Select the languages for OCR recognition (multiple languages possible). You can only recognise texts in the languages that you select here.
12. Click 'Continue'. TextBridge 3.0 OCR is now installed. This takes a few minutes.

The scanner is automatically recognised by TextBridge. Now go to the 'Installing PaperCom' chapter.

8.2.2 Windows 95 / Windows NT

1. Restart Windows.
2. Place the CD in your CD-ROM drive. The program usually starts automatically. If so, go on to item 5.
3. If your CD-ROM does not start automatically, click 'Start' with the mouse and select 'Run'.
4. Type **[D:\SET-UP.EXE]** in the command line and press **<ENTER>**. See figure 5. After a few seconds, the installation program starts. See figure 6.
5. Click on 'Install Application'. A new window will be visible.
6. Click 'Xerox TextBridge OCR' with the mouse. After a few seconds the installation window is displayed.
7. Select the language you wish to use during installation and click 'OK'.
8. In the next screen select 'Full Installation (software and scanner)' and then click 'Continue'. A screen showing the licence agreement is displayed.
9. Click 'Yes' to accept the licence and continue the installation.
10. Select the languages for OCR recognition (multiple languages possible) and click 'Continue'. You can only recognise text in the languages that you select here.
11. Click 'Continue' to accept the installation folder for TextBridge Classic.
12. After installation you have to select the scanner type. Select 'TWAIN' and 'Continue'. See figure 7. A window showing the available TWAIN drivers is displayed.

ENGLISH

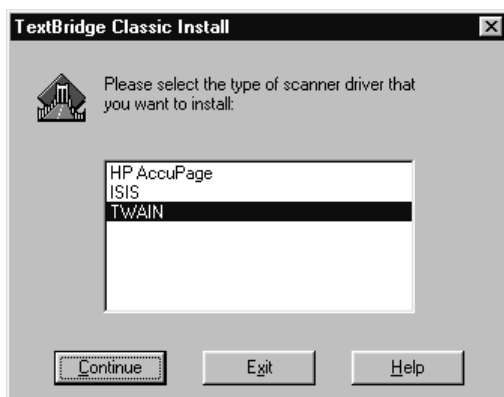


Figure 7: Selecting the input equipment

13. Select 'Trust SCSI Scan 19200 Excellence Series / 32' from the list and click 'Select'. A window as in figure 8 is displayed.

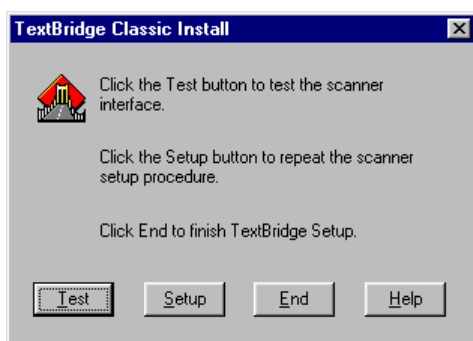


Figure 8: Finish installation

14. Click 'End' to finish the installation.

8.3 Installing PaperCom

Note: PaperCom does not run under Windows NT 4.0

PaperCom is an application with which you can process a piece of text or an image from a single menu with the scanner.

8.3.1 Windows 3.1x

1. Restart Windows 3.1x.
2. Place the CD in your CD-ROM drive.

3. In 'Program Manager' select the 'Run' option from the 'File' menu. See figure 3.
4. Type **[D:\SET-UP.EXE]** in the command line. Then click 'OK'. See figure 4. After a few seconds, the installation program starts. See figure 6.
5. Click on 'Install Application'. A new window will be visible.
6. Click 'PaperCom'. A screen is now displayed in which you can choose the language to install.
7. Select the language you wish to use and press 'OK'. Follow the instructions on the screen. Installation takes a few minutes. After installation of the software the PC will be restarted.

You are now ready to use the scanner.

8.3.2 Windows 95

1. Restart Windows.
2. Place the CD in your CD-ROM drive. The program usually starts automatically. If so, go on to item 5.
3. If your CD-ROM does not start automatically, click 'Start' with the mouse and select 'Run'.
4. Type **[D:\SET-UP.EXE]** in the command line and press **<ENTER>**. See figure 5. After a few seconds, the installation program starts. See figure 6.
5. Click on 'Install Application'. A new window will be visible.
6. Click 'PaperCom'. A screen is now displayed in which you can choose the language to install.
7. Select the language you wish to use and press 'OK'. Follow the instructions on the screen. Installation takes a few minutes. After installation of the software the PC will be restarted.

You are now ready to use the scanner.

9. Working with MGI PhotoSuite SE

9.1 Once-only set-up

Proceed as follows to set up MGI PhotoSuite SE for the scanner:

1. Start 'MGI PhotoSuite SE'. A window as in figure 9 appears.



Figure 9: The location of the 'Work on your own' button

2. Click 'Work on your own'.
3. Click 'File'.
4. Click 'Get Photos From ->'.
5. Select 'Select Source'. See figure 10. A list of available scanners is displayed.

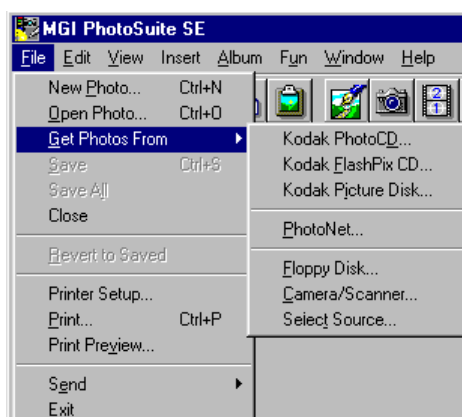


Figure 10: Setting up the scanner

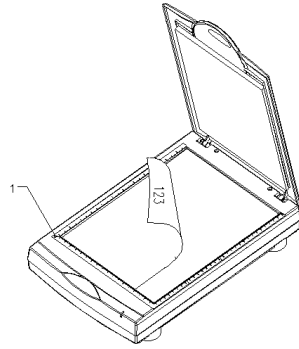
6. From the list select the Trust SCSI Scan 19200 Excellence Series/16 if you are running Windows 3.1x or the Trust SCSI Scan/32 if you are running Windows 95 or NT4.
7. Then click 'Select'.

You can now use your scanner in MGI PhotoSuite SE. The scanner only has to be set up once.

9.2 Scanning with MGI PhotoSuite SE

1. Start the 'MGI PhotoSuite SE' program.
2. Click 'Work on your own'. See figure 9.
3. Click 'File'.
4. Click 'Get Photos From ->'.
5. Select 'Camera/Scanner...'. See figure 10.
6. The 'TWAIN' window appears. See figure 12.
7. Place the original that you wish to scan on the scanner's glass plate, with the image downwards (figure 11).
8. Click 'Preview'. The scanner now produces a test scan.
9. Use the mouse to select the size, resolution etc. of the image that you wish to scan. For images the 'Colour' option and 300 dpi resolution generally yield the best results.
10. Click 'Scan'. The scanner now begins to scan.
11. Once the scanner has finished scanning, click 'Exit' to return to PhotoSuite. You can now further edit the image. Please refer to the on-line help for more information.

This was a brief introduction to the program. Consult the on-line help for more information.



ENGLISH

Figure 11: Positioning a document (1 = reference point)

10. Working with TextBridge

TextBridge is a program for scanning text and editing the text with a text editor or word processor. A detailed user's guide to the program can be found on the CD-ROM.

10.1 TextBridge 3.0 OCR for Windows 3.1x

10.1.1 Once-only set-up of the scanner

1. Start the 'Scanner Set-up' program in the TextBridge OCR program group.
2. Click 'Type'.
3. Select 'TWAIN'.
4. Then click 'File'.
5. Select 'Select Source...'. See figure 13.

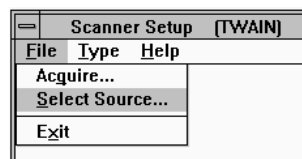


Figure 13: Scanner set-up

6. Select 'Trust SCSI Scan 19200 Excellence Series/16' and click 'Select'.

Your TextBridge is now ready to use.

10.1.2 Producing a scan with TextBridge 3.0 OCR

1. Start 'TextBridge' by double-clicking the icon. A screen such as in figure 14 appears.

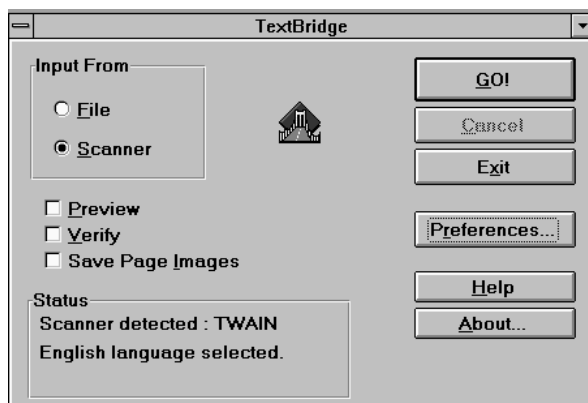


Figure 14: TextBridge 3.0 OCR for Windows 3.1x

2. Under 'Input From' you must select 'Scanner'.
3. Deactivate the 'Save Page Images' option.
4. Click 'GO!' to scan the text. The TWAIN window (see figure 12) now appears.
5. Click 'Preview' to produce a test scan first.
6. Use the mouse to select the text you wish to scan. This is usually the whole page.
7. Click 'Line-art'.
8. Set the resolution to 400 dpi.
9. Now press 'Scan' to begin scanning. This takes a few seconds. A window then appears asking whether you wish to add more pages. You can now recognise a number of pages of text.
10. Click 'End'. This ends the scanning process. Now save the recognised text file so that you can use it with a text editor or word processor.
11. Under 'File Name' type a name for the file consisting of a maximum of 8 letters.
12. In 'List Files of Type' select the file format that your text editor or word processor can use. The 'ASCII Std (*.TXT)' option will usually work.
13. Press 'OK' to save this and to close the scanning session. You now return to the beginning.
14. Click 'Exit' to close TextBridge 3.0 OCR.

To edit the scanned text that you have just saved you must open a text editor, for example 'Notepad'. You can also use your own text editor or word processor.

10.2 TextBridge Classic for Windows 95

10.2.1 Setting up the scanner

The scanner was already set up to use the software during installation of the application.

10.2.2 Scanning with TextBridge Classic

1. Start TextBridge Classic.
2. Place the document that is to be scanned on the scanner.
3. Press the 'Go' button (figure 15) in TextBridge. The TWAIN window (figure 12) now appears on the screen.



Figure 15: 'Go' button

4. Click 'Preview' to produce a test scan.
5. Use the mouse to select the area you wish to scan.
6. Click 'Line-art'.
7. Set the resolution to 300 dpi.
8. Click 'Scan'. Once scanning is complete, TextBridge Classic asks whether there is anything else to scan. You can now scan more pages.
9. Click 'End' to finish scanning. Text recognition now starts automatically. A window then appears asking you to save the text that has been scanned.
10. Type a name for your text under 'File Name'.
11. Under 'Save as Type' select the file format. You should choose a file format that is supported by your text editor or word processor. If in doubt, select 'ASCII Std. (*.txt)'.
12. Click 'Save' to save the file. You have now finished the recognition process.

13. Close TextBridge Classic.

To be able to edit the scanned text you have just been saved you, you need a text editor or /word processor. Enter the name of the file that you saved in item 12.

TextBridge also has more advanced options. Refer to the on-line help and the documentation on the CD for further information.

ENGLISH

11. Working with PaperCom

Note: PaperCom does not run under Windows NT 4.0

PaperCom gives you fast access to the scanner's many functions. You are hardly required to make any settings. Once PaperCom is running, a window as in figure 16 is displayed.



Figure 16: PaperCom (Quick Selector) window

Function of the buttons:

1. Close PaperCom
2. To Inbox Manager
3. Start Scan (the action which you chose in items 4 to 11 is carried out)
4. Set scanning to 'Inbox'
5. Set scanning to database
6. Set scanning to file
7. Set scanning to your printer (copier function)
8. Set document to be sent by e-mail. You need an e-mail program and a network or Internet connection for this.
9. Set document to be sent by fax. You need a fax/modem for this.
10. Set scanning and editing of images
11. Set scanning and recognition of text (OCR)
12. Change PaperCom settings

12. The 'TWAIN' Window

Note: *In the Macintosh version certain functions cannot be activated, and the layout can differ from the PC version.*

ENGLISH

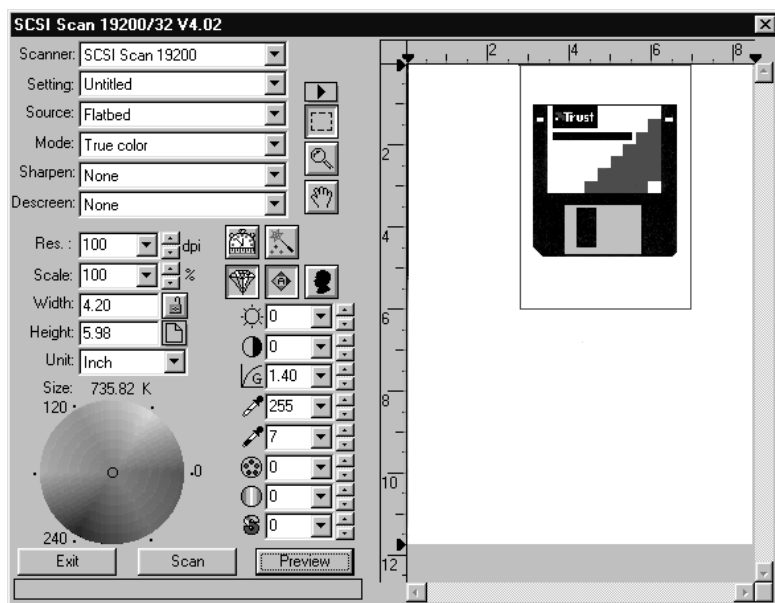











Figure 17: The 'TWAIN' window

-  Increase scanning area
-  Select scanning area
-  Increase/decrease area
-  Move scanning area
-  Fast scan mode (not on the Macintosh)
-  Quality scan mode (not on the Macintosh)

-  Modify colours
-  Set up automatically
-  Reverse

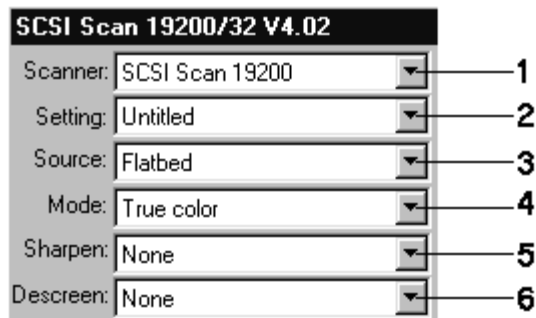


Figure 18: Part of the 'TWAIN' window

1. Scanner: select and call up information on the scanner
2. Setting: set standard scanning settings
3. Source: select flatbed scanner and transparent (for scanning slides)
4. Mode: setting scan mode: black-and-white, grey or colour (see also 13.2)
5. Sharpen: feature for sharpening the picture
6. Descreen: setting moiré

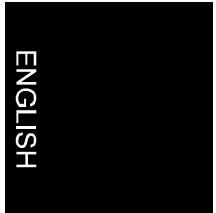
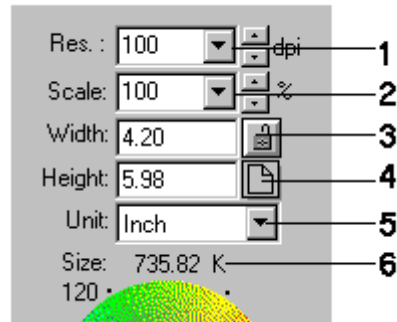


Figure 19: Part of the 'TWAIN' window

1. Resolution: resolution setting (50 - 19,200 dpi).
2. Scale: scale setting (50% - 800% in steps of 1%)
3. Width of scanning area
4. Height of scanning area
5. Measuring unit (inch, cm, pixel)
6. File size of scanning area

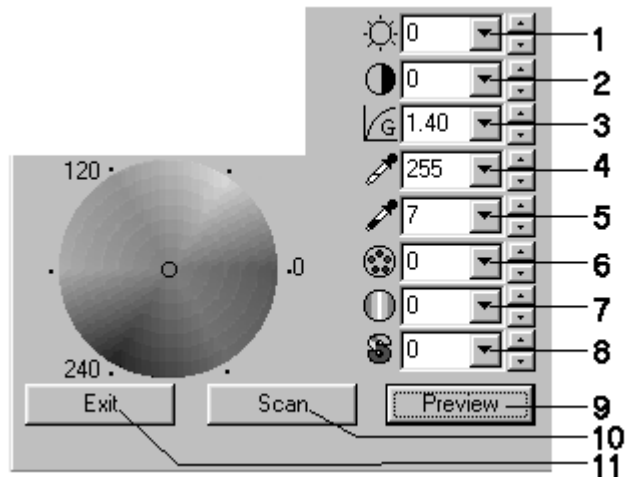


Figure 20: Part of the 'TWAIN' window

1. Brightness: brightness setting between -50, 0 and 50)
2. Contrast: contrast setting between -50, 0 and 50)
3. Gamma: gamma value setting (0.5 to 3.0)
4. Marked
5. Shadow: shadow setting
6. Tint: tint setting
7. Intensity: intensity setting
8. Saturation: colour saturation setting
9. Preview: making a test scan
10. Scan: making a scan
11. Exit: leaving the 'TWAIN' window

13. Scanning Tips

13.1 Resolution

The disk space required for scanning an image is three times the size of the image. For a 5 MB image you therefore need 15 MB of free space on your hard disk.

Only use a high resolution for small originals. You can calculate the size of an image to be scanned as follows:

$$\text{Dim} = \text{H} \times \text{W} \times \text{Res}^2$$

Whereby:

Dim = dimensions of the image in bytes

H = height of the image to be scanned in inches

W = width of the image to be scanned in inches

Res² = the resolution in dpi raised to the power of 2

For instance: a 2 by 3 inch (HxW) image is scanned at a resolution of 300 dpi. The resolution squared is 300 x 300 = 90,000, so the size of the image is then: 2 x 3 x 90.000 = 540,000 bytes.

13.2 Scanning mode

The following list shows which scanning mode is best suited to which sort of image:

- True Colour: Photo's
- Grey scale: Grey values
- Halftone: Faxes
- Line art: Texts

14. Maintenance

Clean the glass plate regularly with a soft, clean cloth to remove dust and other marks. A clean glass plate is important because marks can be seen in the scanned image.

Observe the following safety measures when cleaning the equipment:

1. Remove the plugs from the sockets before cleaning the equipment.
2. Do not use any aggressive liquids to clean the scanner/glass plate.
3. Do not use liquid cleaning agents or spray cans.
4. Wipe off the equipment with a damp cloth.

15. Troubleshooting

Problem	Possible cause	Solution
Scanner is very noisy.	Scanner transport safety catch is still engaged	Disengage transport safety catch (chapter 3.2).
Computer keeps getting 'stuck' during scanning.	Cable not properly connected.	Check the cable connection.
Scan is too dark.	Scanner not yet warmed up.	Let the scanner warm up for a few minutes before scanning.
	Monitor is too dark.	Change the monitor brightness.
	Brightness in the TWAIN incorrectly set.	Set the brightness of the TWAIN driver.
	Gamma value is incorrectly set.	Set the gamma value to 1.8 for your monitor and 2.2 for your printer.
Scan is of poor quality.	Resolution is too low.	Set the resolution of the TWAIN driver to 300 dpi.
	Number of colours on VGA card too low.	Set your display adapter to a minimum of 65,536 colours.
	Glass plate is dirty.	Clean the glass plate.
Error Code 129: Can't find scanner	Jumper J1 is set up incorrectly.	Set J1 according to table 3.
	SCSI card is not installed or is incorrectly installed.	Install the SCSI card.
LED keeps flashing.	Scanner turned on while computer is already on.	Turn scanner on, wait till LED is burning, then turn on computer.

SCSI Scan 19200 Excellence Series

Problem	Possible cause	Solution
Scanner is very noisy.	Scanner transport safety catch is still engaged	Disengage transport safety catch (chapter 3.2).
Computer keeps getting 'stuck' during scanning.	Cable not properly connected.	Check the cable connection.
Scanner is working slowly.	Resolution is set too high.	Only use higher resolutions (>300 dpi) for small originals.
	Insufficient memory.	At least 8 MB needed. 16 MB is recommended for Windows 3.1x and 32 MB for Windows 95.
Error message during the scanning.	Hard disk full.	You need 3 times the space of the image to be scanned as free space on the hard disk. Make some free space on your hard disk, or choose a lower resolution.
	Resolution is set too high.	Select a maximum of 300 dpi when scanning an A4 format in colour.
	Too large an area selected.	Select a resolution above 1200 dpi for small originals only (1.3 x 1.3 cm).

If you are still having problems with your scanner after having tried these solutions, contact your dealer or the Trust Help desk.

Before contacting your dealer or the Trust Help desk, ensure that you have the following information on hand.

1. Serial number of the scanner
2. Model number of the scanner
3. Operating system
4. Hardware configuration:
 - a) CPU (MHz)
 - b) Memory (MB)
 - c) Free space on the hard disk: (MB)
 - d) Display adapter: resolution + number of colours
5. Version of TWAIN driver
6. Name and version of application software

ENGLISH

16. Technical Specifications

Type	Flatbed
Optical resolution (H x V)	600 x 1200 dpi
Maximum resolution (H x V)	19200 x 19200 dpi
Scanning method	<ul style="list-style-type: none"> • 1 bit black-and-white • 12 bit grey scale • 36 bit colour
Document format	<ul style="list-style-type: none"> • A4 • Letter
Interface	SCSI-II
Mains source	<ul style="list-style-type: none"> • 220 V ac - 240 V ac • 50 - 60 Hz • External
Output	12 watts
Dimensions (WxHxD)	399 x 73 x 260 mm
Weight (excluding packaging)	2.7 kg